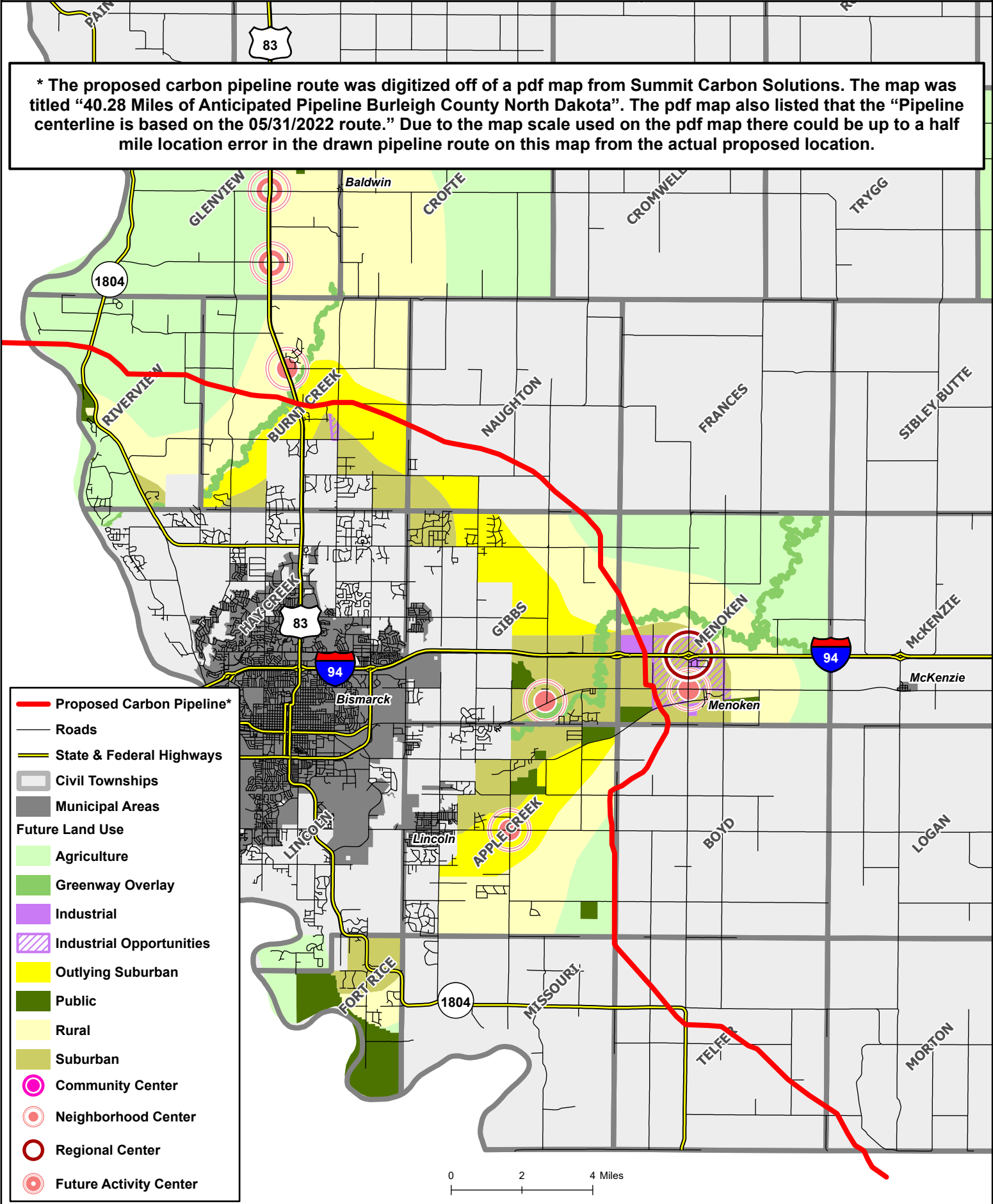




\* The proposed carbon pipeline route was digitized off of a pdf map from Summit Carbon Solutions. The map was titled "40.28 Miles of Anticipated Pipeline Burleigh County North Dakota". The pdf map also listed that the "Pipeline centerline is based on the 05/31/2022 route." Due to the map scale used on the pdf map there could be up to a half mile location error in the drawn pipeline route on this map from the actual proposed location.



- Proposed Carbon Pipeline\*
- Roads
- State & Federal Highways
- ▭ Civil Townships
- ▭ Municipal Areas
- Future Land Use
- ▭ Agriculture
- ▭ Greenway Overlay
- ▭ Industrial
- ▭ Industrial Opportunities
- ▭ Outlying Suburban
- ▭ Public
- ▭ Rural
- ▭ Suburban
- Community Center
- Neighborhood Center
- Regional Center
- Future Activity Center

