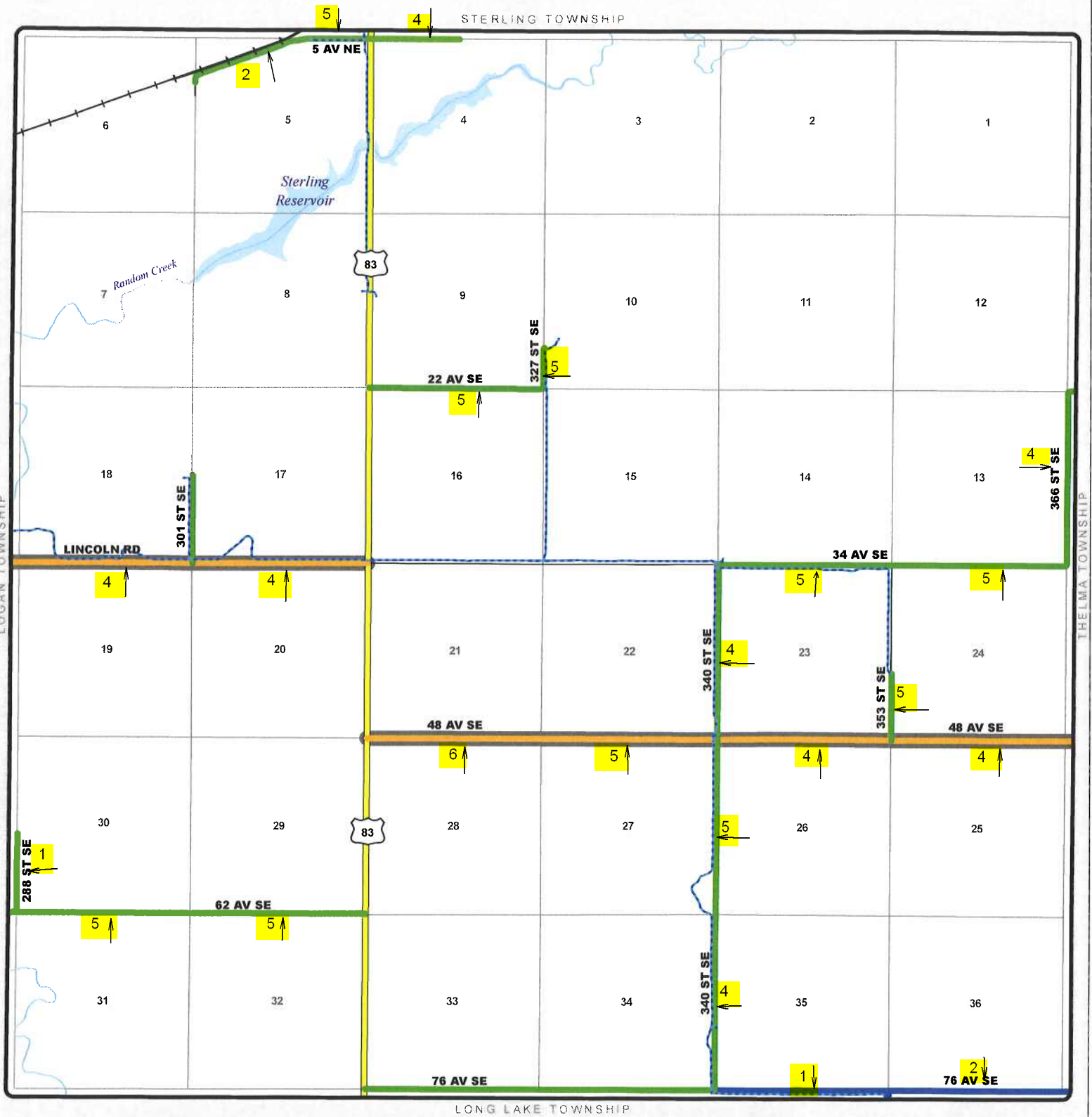




# TOWNSHIP ROAD MAINTENANCE MAP

## TAFT #42 (T138N R76W)



County Gravel Road	Gravel - Winter Maintenance	Paved - Winter Maintenance	State & Federal Highways	Bridge
County Paved Road	Gravel - Year Round Maintenance	Paved - Year Round Maintenance	Federal Aid Road	Water Pipe
Gravel - Summer Maintenance	Paved - Summer Maintenance	Township/County Jurisdiction	Other Roads	