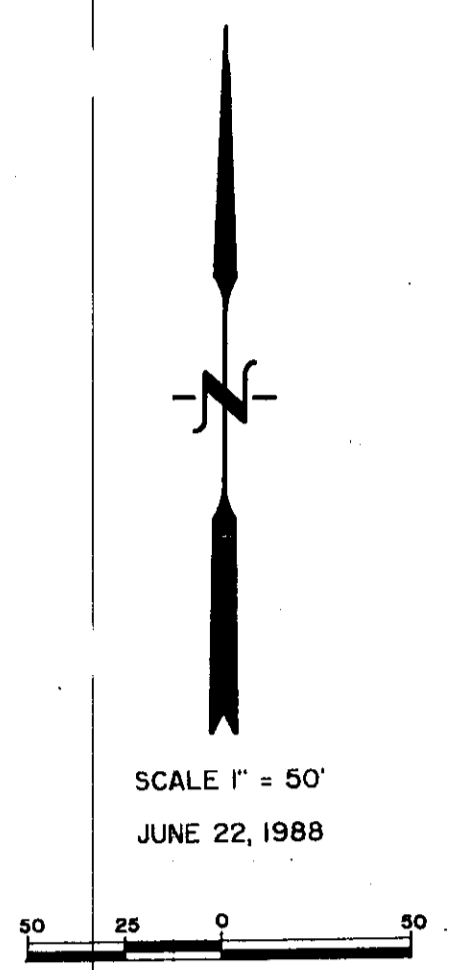


AUCK SUBDIVISION

PART OF NE 1/4 SECTION 6, T. 140 N., R. 80 W.

BURLEIGH COUNTY, NORTH DAKOTA



DESCRIPTION

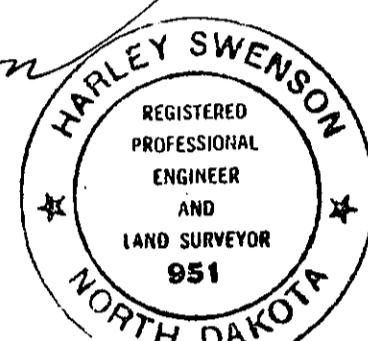
ALL THAT PART OF LOT D OF THE NORTHEAST 1/4 OF SECTION 6, TOWNSHIP 140 NORTH, RANGE 80 WEST OF THE 5TH PRINCIPAL MERIDIAN, BURLEIGH COUNTY, NORTH DAKOTA THAT LIES WITHIN THE FOLLOWING DESCRIBED TRAVERSE:
 BEGINNING ON THE EAST LINE OF SECTION 6 A DISTANCE OF 815.28 FEET SOUTH OF THE NORTHEAST CORNER; THENCE SOUTH 0 DEGREES 10 MINUTES 00 SECONDS EAST ALONG THE EAST LINE OF SAID SECTION 6 A DISTANCE OF 533.44 FEET; THENCE SOUTH 87 DEGREES 08 MINUTES 00 SECONDS WEST A DISTANCE OF 474.95 FEET; THENCE NORTH 0 DEGREES 10 MINUTES 00 SECONDS WEST, PARALLEL WITH THE EAST LINE OF SECTION 6 A DISTANCE OF 511.38 FEET; THENCE NORTH 84 DEGREES 29 MINUTES 00 SECONDS EAST A DISTANCE OF 476.50 FEET; TO THE POINT OF BEGINNING.
 THE ABOVE DESCRIBED TRACT CONTAINS 5.69 ACRES, MORE OR LESS.

SURVEYOR'S CERTIFICATE

I, HARLEY SWENSON, A REGISTERED PROFESSIONAL ENGINEER AND LAND SURVEYOR IN THE STATE OF NORTH DAKOTA HEREBY CERTIFY THAT THE ANNEXED PLAT IS A TRUE COPY OF THE NOTES OF A SURVEY PERFORMED UNDER MY DIRECT SUPERVISION AND COMPLETED ON JUNE 7, 1988, AND THAT ALL INFORMATION SHOWN HEREON IS TRUE AND CORRECT TO THE BEST OF MY KNOWLEDGE AND BELIEF.

SWENSON, HAGEN AND COMPANY
 CONSULTING ENGINEERS
 P.O. BOX 1135 - 909 BASIN AVE.
 BISMARCK, NORTH DAKOTA

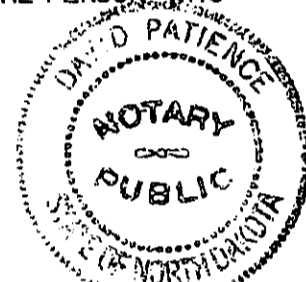
HARLEY SWENSON
 REGISTERED PROFESSIONAL
 ENGINEER AND LAND SURVEYOR
 NO. REGISTRATION NO. 951



STATE OF NORTH DAKOTA)
) SS
 COUNTY OF BURLEIGH)

ON THIS 27TH DAY OF DECEMBER, 1988, BEFORE ME PERSONALLY APPEARED HARLEY SWENSON, KNOWN TO ME TO BE THE PERSON WHO EXECUTED THE FOREGOING SURVEYOR'S CERTIFICATE AND ACKNOWLEDGED TO ME THAT HE EXECUTED THE SAME.

DAVID PATIENCE - NOTARY PUBLIC
 BURLEIGH COUNTY, NORTH DAKOTA
 MY COMMISSION EXPIRES: 7-24-92



APPROVAL OF BOARD OF COUNTY COMMISSIONERS

THE BOARD OF COUNTY COMMISSIONERS OF BURLEIGH COUNTY, NORTH DAKOTA, HAS APPROVED THE SUBDIVISION OF LAND ON THE ANNEXED PLAT, HAS ACCEPTED THE DEDICATION OF ALL STREETS SHOWN THEREON AND HAS APPROVED THE GROUNDS AS SHOWN ON THE ANNEXED PLAT AS AN AMENDMENT TO THE MASTER PLAN OF BURLEIGH COUNTY.
 THE FOREGOING ACTION OF THE BOARD OF COUNTY COMMISSIONERS OF BURLEIGH COUNTY, NORTH DAKOTA, WAS TAKEN BY RESOLUTION APPROVED THE 24th DAY OF AUGUST, 1988.

CLAUS LEMBEKE - CHAIRMAN

KEVIN GLATT - COUNTY AUDITOR

APPROVAL OF PLANNING COMMISSION

THE SUBDIVISION OF LAND AS SHOWN ON THE ANNEXED PLAT HAS BEEN APPROVED BY THE PLANNING COMMISSION OF THE COUNTY OF BURLEIGH ON THE 16th DAY OF JULY, 1988, IN ACCORDANCE WITH THE LAWS OF THE STATE OF NORTH DAKOTA, ORDINANCES OF BURLEIGH COUNTY, NORTH DAKOTA AND REGULATIONS ADOPTED BY SAID PLANNING COMMISSION.

DONALD AHO - CHAIRMAN

KEVIN GLATT - COUNTY AUDITOR

APPROVAL OF COUNTY ENGINEER

I, JON MILL, COUNTY ENGINEER FOR THE COUNTY OF BURLEIGH, STATE OF NORTH DAKOTA, HEREBY APPROVE "AUCK SUBDIVISION" AS SHOWN ON THE ANNEXED PLAT.

JON MILL - COUNTY ENGINEER

OWNER'S CERTIFICATE

KNOW ALL MEN BY THESE PRESENTS THAT RICHARD O. AUCK AND CYNTHIA K. AUCK, BEING THE OWNERS AND PROPRIETORS OF THE PROPERTY SHOWN ON THE ANNEXED PLAT HAVE CAUSED THAT PORTION DESCRIBED HEREON AND SHOWN ON THE ANNEXED PLAT TO BE SURVEYED AND PLATTED AS "AUCK SUBDIVISION" AND DO SO DEDICATE STREETS AS SHOWN HEREON INCLUDING SEWERS, CULVERTS AND OTHER UTILITIES WHETHER SHOWN HEREON OR NOT TO THE PUBLIC USE FOREVER.

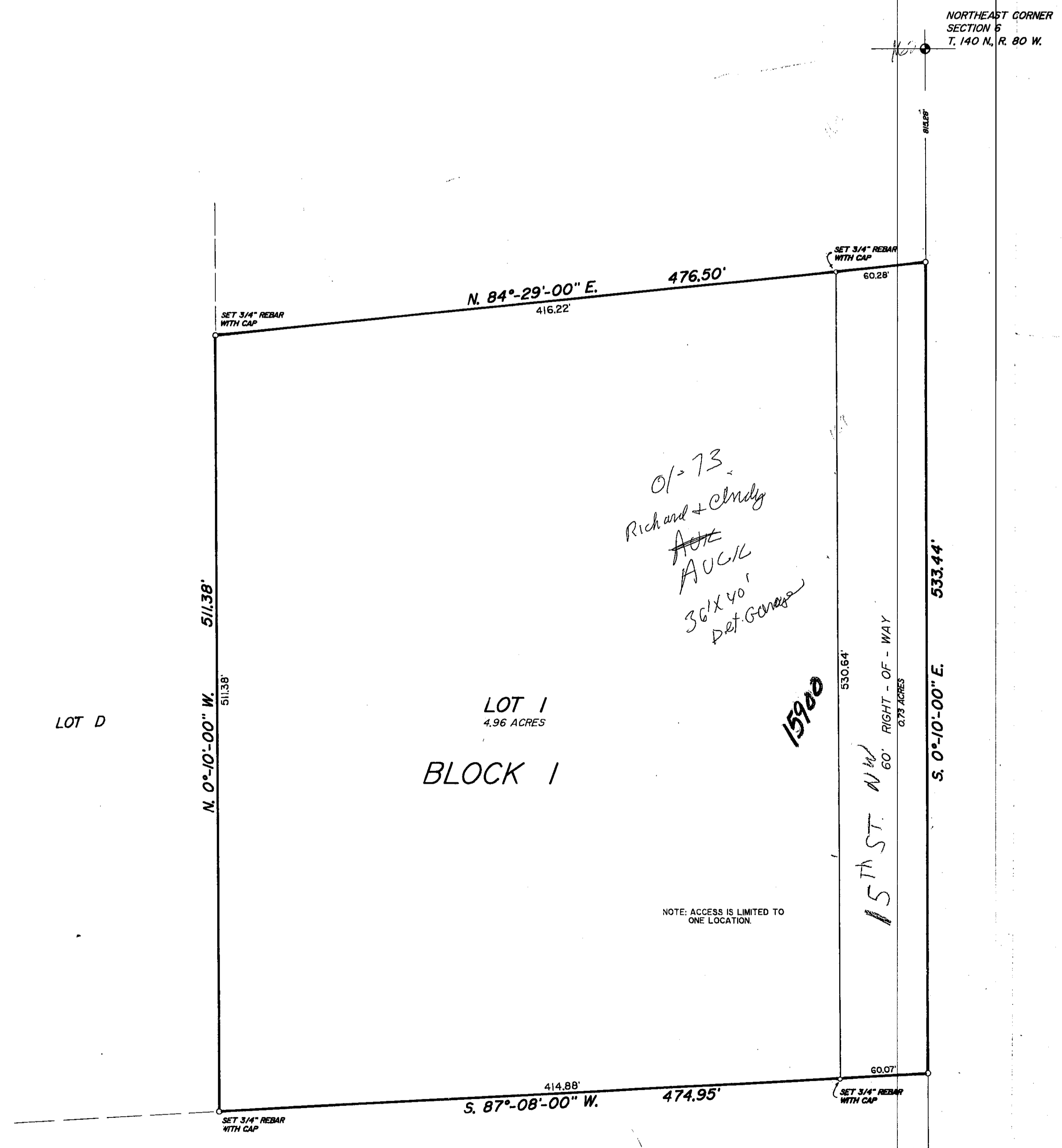
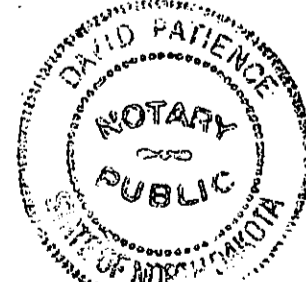
RICHARD O. AUCK

CYNTHIA K. AUCK

STATE OF NORTH DAKOTA)
) SS
 COUNTY OF BURLEIGH)

ON THIS 29TH DAY OF DECEMBER, 1988, BEFORE ME PERSONALLY APPEARED RICHARD O. AUCK AND CYNTHIA K. AUCK KNOWN TO ME TO BE THE PERSONS WHO EXECUTED THE FOREGOING INSTRUMENT AND ACKNOWLEDGED TO ME THAT THEY EXECUTED THE SAME.

DAVID PATIENCE - NOTARY PUBLIC
 BURLEIGH COUNTY, NORTH DAKOTA
 MY COMMISSION EXPIRES: 7-24-92



RECEIVED
 JAN 31 1989
 PLANNING DEPT.
 BISMARCK, N. D.

Auck Subdivision
 County
 Plat Number 240