

COUNTRY CREEK FOURTH SUBDIVISION

THE SOUTH 400 FEET OF GOVERNMENT LOT 5, PART OF
GOVERNMENT LOT 6, PART OF THE SOUTHEAST 1/4 OF THE NORTHWEST 1/4
AND PART OF THE NORTHEAST 1/4 OF THE SOUTHWEST 1/4
THAT LIES NORTH AND WEST OF COUNTRY CREEK SECOND SUBDIVISION
SECTION 6, TOWNSHIP 139 NORTH, RANGE 79 WEST
BURLEIGH COUNTY, NORTH DAKOTA

DESCRIPTION

THE SOUTH 400 FEET OF GOVERNMENT LOT 5, PART OF GOVERNMENT LOT 6, PART OF THE SOUTHEAST 1/4 OF THE NORTHWEST 1/4 AND PART OF THE NORTHEAST 1/4 OF THE SOUTHWEST 1/4 THAT LIES NORTH AND WEST OF COUNTRY CREEK SECOND SUBDIVISION, SECTION 6, TOWNSHIP 139 NORTH, RANGE 79 WEST OF THE 5TH PRINCIPAL MERIDIAN, BURLEIGH COUNTY, NORTH DAKOTA, DESCRIBED AS FOLLOWS:

BEGINNING AT THE NORTHWEST CORNER OF COUNTRY CREEK SECOND SUBDIVISION, SAID POINT BEING NORTH 0 DEGREES 37 MINUTES 09 SECONDS EAST, A DISTANCE OF 1972.08 FEET FROM THE SOUTHWEST CORNER OF SECTION 6; THENCE NORTH 0 DEGREES 37 MINUTES 09 SECONDS WEST, ALONG THE WEST LINE OF SAID SECTION 6, A DISTANCE OF 1072.24 FEET; THENCE SOUTH 89 DEGREES 27 MINUTES 09 SECONDS EAST, A DISTANCE OF 1283.73 FEET TO THE NORTHWEST CORNER OF LOT 6 BLOCK 4, COUNTRY CREEK SECOND SUBDIVISION; THENCE SOUTH 0 DEGREES 00 MINUTES 00 SECONDS WEST, ALONG THE BOUNDARY OF SAID SUBDIVISION, A DISTANCE OF 473.60 FEET; THENCE SOUTH 13 DEGREES 48 MINUTES 05 SECONDS WEST, CONTINUING ALONG SAID BOUNDARY, A DISTANCE OF 82.38 FEET; THENCE SOUTH 0 DEGREES 00 MINUTES 00 SECONDS WEST, CONTINUING ALONG SAID BOUNDARY, A DISTANCE OF 426.24 FEET; THENCE SOUTH 90 DEGREES 00 MINUTES 00 SECONDS WEST, CONTINUING ALONG SAID BOUNDARY, A DISTANCE OF 589.40 FEET; THENCE SOUTH 82 DEGREES 32 MINUTES 11 SECONDS WEST, CONTINUING ALONG SAID BOUNDARY, A DISTANCE OF 616.42 FEET; THENCE SOUTH 90 DEGREES 00 MINUTES 00 SECONDS WEST, CONTINUING ALONG SAID BOUNDARY, A DISTANCE OF 75.00 FEET TO THE POINT OF BEGINNING. THE ABOVE DESCRIBED TRACT CONTAINS 29.67 ACRES MORE OR LESS.

APPROVAL OF CITY PLANNING COMMISSION

THE SUBDIVISION OF LAND AS SHOWN ON THE ANNEXED PLAT HAS BEEN APPROVED BY THE PLANNING COMMISSION OF THE CITY OF BISMARCK, ON THE 28th DAY OF June, 2006, IN ACCORDANCE WITH LAWS OF THE STATE OF NORTH DAKOTA, ORDINANCES OF THE CITY OF BISMARCK AND REGULATIONS ADOPTED BY THE SAID PLANNING COMMISSION. IN WITNESS WHEREOF ARE SET THE HANDS AND SEALS OF THE CHAIRMAN AND SECRETARY OF THE PLANNING COMMISSION OF THE CITY OF BISMARCK.

David Blackstead
DAVID BLACKSTEAD - CHAIRMAN

Carl D. Hokenstad
CARL D. HOKENSTAD - SECRETARY

APPROVAL OF BOARD OF CITY COMMISSIONERS

THE BOARD OF CITY COMMISSIONERS OF THE CITY OF BISMARCK, NORTH DAKOTA, HAS APPROVED THE SUBDIVISION OF LAND AS SHOWN ON THE ANNEXED PLAT, HAS APPROVED THE DEDICATION OF ALL STREETS SHOWN THEREON, HAS APPROVED THE GROUNDS AS SHOWN ON THE ANNEXED PLAT AS AN AMENDMENT TO THE MASTER PLAN OF BURLEIGH COUNTY, NORTH DAKOTA, AND DOES HEREBY VACATE ANY PREVIOUS PLATTING WITHIN THE BOUNDARY OF THE ANNEXED PLAT. THE FOREGOING ACTION OF THE BOARD OF CITY COMMISSIONERS OF BISMARCK, NORTH DAKOTA, WAS TAKEN BY RESOLUTION APPROVED THE 25th DAY OF July, 2006.

W. C. Wocken
ATTEST
W. C. WOCKEN - CITY ADMINISTRATOR

APPROVAL OF CITY ENGINEER

I, MELVIN J. BULLINGER, CITY ENGINEER OF THE CITY OF BISMARCK, NORTH DAKOTA, HEREBY APPROVE "COUNTRY CREEK FOURTH SUBDIVISION", BISMARCK, NORTH DAKOTA AS SHOWN ON THE ANNEXED PLAT.

Melvin J. Bullinger
MELVIN J. BULLINGER
CITY ENGINEER

APPROVAL OF BOARD OF COUNTY COMMISSIONERS

THE BOARD OF COUNTY COMMISSIONERS OF BURLEIGH COUNTY, NORTH DAKOTA, HAS APPROVED THE SUBDIVISION OF LAND AS SHOWN ON THE ANNEXED PLAT, HAS ACCEPTED THE DEDICATION OF ALL STREETS SHOWN THEREON, HAS APPROVED THE GROUNDS AS SHOWN ON THE ANNEXED PLAT AS AN AMENDMENT TO THE MASTER PLAN OF BURLEIGH COUNTY, NORTH DAKOTA, AND DOES HEREBY VACATE ANY PREVIOUS PLATTING WITHIN THE BOUNDARY OF THE ANNEXED PLAT. THE FOREGOING ACTION OF THE BOARD OF COUNTY COMMISSIONERS OF BURLEIGH COUNTY, NORTH DAKOTA, WAS TAKEN BY RESOLUTION APPROVED THE 1st DAY OF August, 2006.

Doug Schornert
DOUG SCHONERT - CHAIRMAN

Kevin J. Glatt
ATTEST
KEVIN J. GLATT - COUNTY AUDITOR

OWNER'S CERTIFICATE & DEDICATION

KNOW ALL MEN BY THESE PRESENTS THAT ART MARINER, BISMARCK, NORTH DAKOTA BEING THE OWNER AND PROPRIETOR OF THE PROPERTY SHOWN ON THE ANNEXED PLAT HAS CAUSED THAT PORTION DESCRIBED HEREON TO BE SURVEYED AND PLATTED AS "COUNTRY CREEK FOURTH SUBDIVISION" BURLEIGH COUNTY, NORTH DAKOTA AND DOES SO DEDICATE STREETS AS SHOWN HEREON INCLUDING ALL CULVERTS TO THE PUBLIC USE FOREVER.

HE ALSO DEDICATES EASEMENTS TO RUN WITH THE LAND, FOR GAS, ELECTRIC, TELEPHONE OR OTHER PUBLIC UTILITIES OR SERVICES ON OR UNDER THOSE CERTAIN STRIPS OF LAND DESIGNATED HEREON AS "UTILITY EASEMENTS".

HE FURTHERMORE DEDICATES UNTO BURLEIGH COUNTY "STORM WATER EASEMENTS" TO RUN WITH THE LAND FOR THE PURPOSE OF STORM SEWER AND SURFACE WATER DRAINAGE UNDER, OVER THROUGH AND/OR ACROSS THOSE AREAS DESIGNATED HEREON AS "STORM WATER EASEMENTS" FOR THE PURPOSE OF CONSTRUCTION, RECONSTRUCTION, REPAIR, ENLARGING AND MAINTAINING STORM WATER MANAGEMENT FACILITIES TOGETHER WITH NECESSARY APPURTENANCES THERETO FOR STORM WATER, STORM SEWER AND SURFACE WATER DRAINAGE AND MANAGEMENT OF SAID STORM WATER FLOW IN A MANNER THAT WILL PERMIT THE FREE AND UNOBSTRUCTED FLOW OF WATER UNDER, OVER, ON AND/OR ACROSS THE EASEMENT AREA.

Art Mariner
ART MARINER
4512 SHOREVIEW PLACE SE
MANDAN, ND 58554

STATE OF NORTH DAKOTA)
COUNTY OF BURLEIGH)

ON THIS 2nd DAY OF August, 2006, BEFORE ME PERSONALLY APPEARED ART MARINER KNOWN TO ME TO BE THE PERSON WHO IS DESCRIBED IN AND WHOSE NAME IS SUBSCRIBED TO THE WITHIN INSTRUMENT AND HE ACKNOWLEDGED TO ME THAT HE EXECUTED THE SAME.

David Patience
DAVID PATIENCE
Notary Public
State of North Dakota
My Commission Expires Aug. 24, 2010

David Patience
DAVID PATIENCE, NOTARY PUBLIC
BURLEIGH COUNTY, NORTH DAKOTA
MY COMMISSION EXPIRES AUGUST 24, 2010

SURVEYOR'S CERTIFICATE

I, TODD MARSCHALL, A REGISTERED LAND SURVEYOR IN THE STATE OF NORTH DAKOTA, HEREBY CERTIFY THE ANNEXED PLAT IS A TRUE COPY OF THE NOTES OF A SURVEY PERFORMED UNDER MY SUPERVISION AND COMPLETED ON JANUARY 14, 2003, AND THAT ALL INFORMATION SHOWN HEREON IS TRUE AND CORRECT TO THE BEST OF MY KNOWLEDGE AND BELIEF.

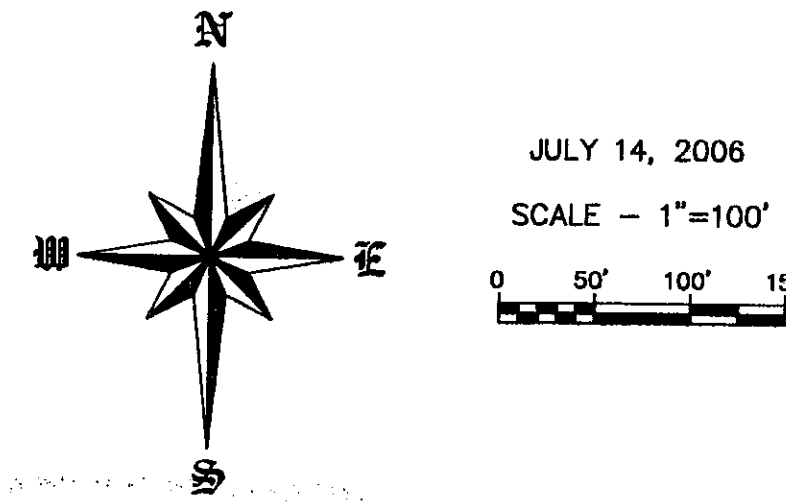
STATE OF NORTH DAKOTA)
COUNTY OF BURLEIGH)

Todd Marschall
TODD MARSCHALL
REGISTERED LAND SURVEYOR
N.D. REGISTRATION NO. 4431

ON THIS 2nd DAY OF August, 2006, BEFORE ME PERSONALLY APPEARED TODD MARSCHALL, KNOWN TO ME TO BE THE PERSON DESCRIBED IN AND WHO EXECUTED THE FOREGOING SURVEYOR'S CERTIFICATE AND HE ACKNOWLEDGED TO ME THAT HE EXECUTED THE SAME.

David Patience
DAVID PATIENCE
Notary Public
State of North Dakota
My Commission Expires Aug. 24, 2010

David Patience
DAVID PATIENCE, NOTARY PUBLIC
BURLEIGH COUNTY, NORTH DAKOTA
MY COMMISSION EXPIRES AUGUST 24, 2010

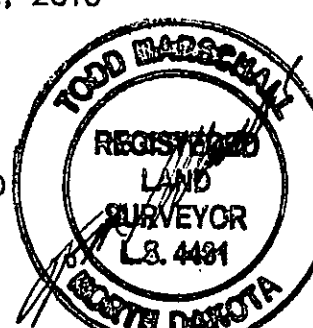
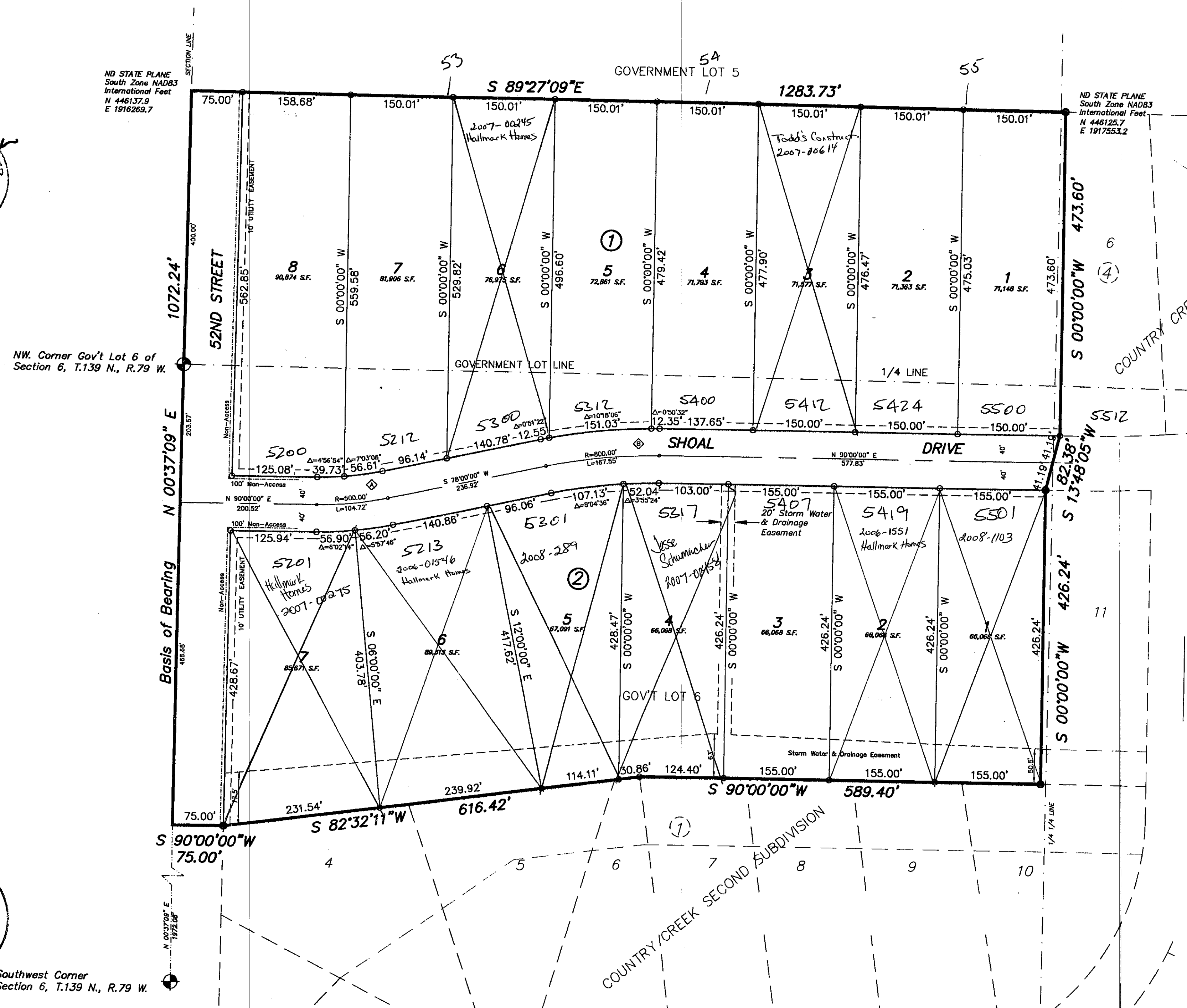


CURVE	RADIUS	LENGTH	TANGENT	DELTA
A	800.00'	104.72'	52.35'	120°00'00"
B	800.00'	116.75'	58.40'	120°00'00"

LOTS	1,114,874 S.F.	25.60 ACRES
STREET	177,394 S.F.	4.07 ACRES
TOTAL	1,292,268 S.F.	29.67 ACRES

- MONUMENT TO BE SET
- MONUMENT FOUND

BEARINGS AND DISTANCES MAY VARY FROM PREVIOUS PLATS DUE TO DIFFERENT METHODS OF MEASUREMENTS.



Country Creek 4th Subdivision
ETA
Plat Number 1150.D