

ROCK CREEK 3RD SUBDIVISION

A REPLAT OF LOT 1, BLOCK 5, ROCK CREEK 2ND SUBDIVISION AND LOT A OF THE SE 1/4 OF SECTION 5, T139N-R79W BURLEIGH COUNTY, NORTH DAKOTA

DESCRIPTION

A REPLAT OF ALL OF LOT 1, BLOCK 5 OF ROCK CREEK SECOND SUBDIVISION AND LOT A OF THE SOUTHEAST QUARTER OF SECTION 5, TOWNSHIP 139 NORTH, RANGE 79 WEST OF THE FIFTH PRINCIPAL MERIDIAN, BURLEIGH COUNTY, NORTH DAKOTA.
SAID TRACT CONTAINS 2.34 ACRES OF LAND, MORE OR LESS.

APPROVAL OF THE BOARD OF CITY COMMISSIONERS

THE BOARD OF CITY COMMISSIONERS OF THE CITY OF BISMARCK, NORTH DAKOTA, HAS APPROVED THE SUBDIVISION OF LAND AS SHOWN ON THE PLAT, HAS ACCEPTED THE DEDICATION OF ALL STREETS SHOWN THEREON, HAS APPROVED THE GROUNDS AS SHOWN ON THE PLAT AS AN AMENDMENT TO THE MASTER PLAN OF THE CITY OF BISMARCK, NORTH DAKOTA.

THE FOREGOING ACTION OF THE BOARD OF CITY COMMISSIONERS OF BISMARCK, NORTH DAKOTA, WAS TAKEN BY RESOLUTION APPROVED THE 20th DAY OF July, 2011.

ATTEST: *W.C. Wocken*
W. C. WOCKEN - CITY ADMINISTRATOR

APPROVAL OF CITY PLANNING COMMISSION

THE SUBDIVISION OF LAND AS SHOWN ON THE PLAT HAS BEEN APPROVED BY THE PLANNING COMMISSION OF THE CITY OF BISMARCK, ON THE 22nd DAY OF July, 2011, IN ACCORDANCE WITH THE LAWS OF THE STATE OF NORTH DAKOTA, ORDINANCES OF THE CITY OF BISMARCK AND REGULATIONS ADOPTED BY SAID PLANNING COMMISSION. IN WITNESS WHEREOF ARE SET THE HANDS AND SEALS OF THE CHAIRMAN AND SECRETARY OF THE PLANNING COMMISSION OF THE CITY OF BISMARCK.

Wayne Bee Yeager
WAYNE BEE YEAGER - CHAIRMAN
Carl D. Hokenstad
CARL D. HOKENSTAD - SECRETARY

APPROVAL OF THE BOARD OF COUNTY COMMISSIONERS

THE BOARD OF COUNTY COMMISSIONERS OF BURLEIGH COUNTY, NORTH DAKOTA, HAS APPROVED THE SUBDIVISION OF LAND AS SHOWN ON THE PLAT, HAS ACCEPTED THE DEDICATION OF ALL STREETS SHOWN THEREON, HAS APPROVED THE GROUNDS AS SHOWN ON THE PLAT AS AN AMENDMENT TO THE MASTER PLAN OF BURLEIGH COUNTY, NORTH DAKOTA.

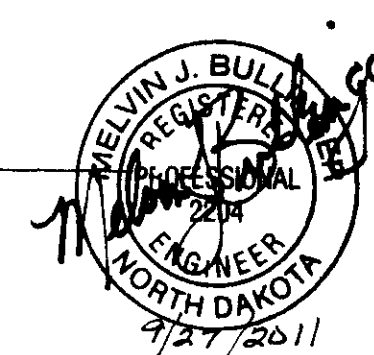
THE FOREGOING ACTION OF THE BOARD OF CITY COMMISSIONERS OF BISMARCK, NORTH DAKOTA, WAS TAKEN BY RESOLUTION APPROVED THE 1st DAY OF August, 2011.

Brian Bitner
BRIAN BITNER - CHAIRMAN
Kevin Glatty
KEVIN GLATTY - COUNTY AUDITOR

APPROVAL OF THE CITY ENGINEER

I, MELVIN J. BULLINGER, CITY ENGINEER OF THE CITY OF BISMARCK, NORTH DAKOTA, HEREBY APPROVE THE ROCK CREEK 3RD SUBDIVISION IN BURLEIGH COUNTY, NORTH DAKOTA AS SHOWN ON THE PLAT.

Melvin J. Bullinger
MELVIN J. BULLINGER, P.E.
CITY ENGINEER



OWNER'S CERTIFICATE AND DEDICATION

KNOW ALL MEN BY THESE PRESENTS THAT JAMES KESSLER BEING THE OWNER AND PROPRIETOR OF THE PROPERTY SHOWN ON THE PLAT HAVE CAUSED THAT PORTION DESCRIBED HEREON TO BE SURVEYED AND PLATTED AS THE ROCK CREEK 3RD SUBDIVISION, AND DO SO DEDICATE STREETS AS SHOWN HEREON INCLUDING ALL SEWER, CULVERTS, WATER AND GAS DISTRIBUTION LINES AND OTHER PUBLIC UTILITY LINES, WHETHER SHOWN HEREON OR NOT, TO THE PUBLIC USE FOREVER. THEY ALSO DEDICATE EASEMENTS TO RUN WITH THE LAND, FOR GAS, ELECTRIC, TELEPHONE OR OTHER PUBLIC UTILITIES OR SERVICES ON OR UNDER THOSE CERTAIN STRIPS OF LAND DESIGNATED HEREON AS "UTILITY EASEMENTS".

James Kessler
JAMES KESSLER
7520 SILTSTONE DRIVE
BISMARCK, ND 58503

STATE OF NORTH DAKOTA

COUNTY OF BURLEIGH

ON THIS 23rd DAY OF September, 2011, BEFORE ME PERSONALLY APPEARED JAMES KESSLER, KNOWN TO ME TO BE THE PERSON DESCRIBED IN AND WHO EXECUTED THE FOREGOING OWNER'S CERTIFICATE AND HE ACKNOWLEDGED TO ME THAT HE EXECUTED THE SAME.

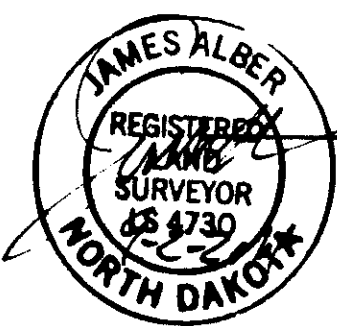
Jessica Keller
JESSICA KELLER
Notary Public
State of North Dakota
My Commission Expires Jan. 3, 2017

Jessica Keller
JESSICA KELLER
NOTARY PUBLIC
BURLEIGH COUNTY, NORTH DAKOTA

SURVEYOR'S CERTIFICATE

I, JAMES ALBER, A REGISTERED LAND SURVEYOR IN THE STATE OF NORTH DAKOTA, HEREBY CERTIFY THAT THE PLAT IS A TRUE REPRESENTATION OF THE ROCK CREEK 3RD SUBDIVISION IN BURLEIGH COUNTY, NORTH DAKOTA. FURTHER THAT ALL INFORMATION SHOWN HEREON IS TRUE AND CORRECT TO THE BEST OF MY BELIEF AND KNOWLEDGE.

James Alber
JAMES ALBER N.D. RLS 4730
ULTEIG ENGINEERS, INC. 1412 BASIN AVENUE
BISMARCK, N.D. 58504



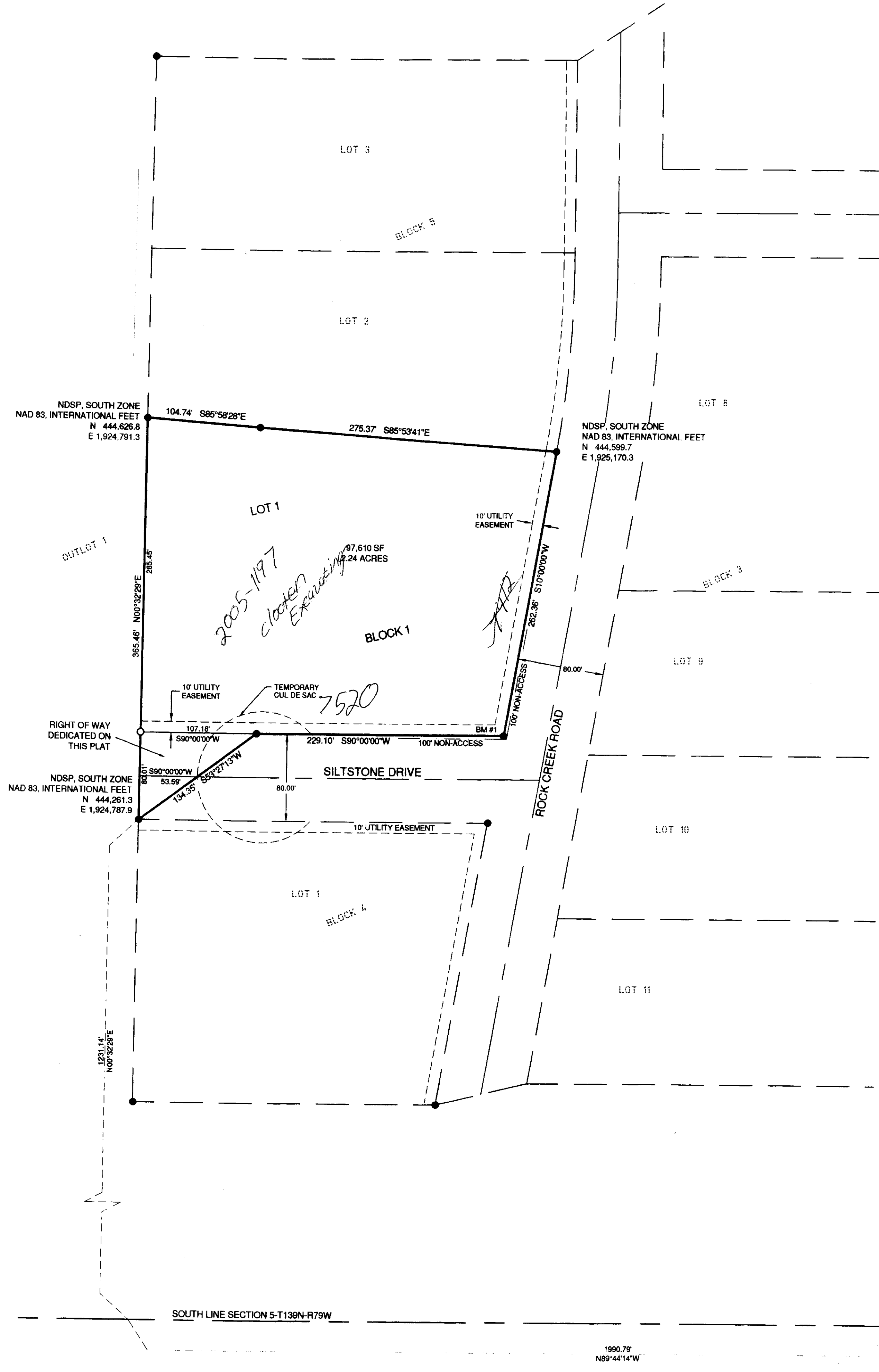
STATE OF NORTH DAKOTA

COUNTY OF BURLEIGH

ON THIS 23rd DAY OF September, 2011, BEFORE ME PERSONALLY APPEARED JAMES ALBER, KNOWN TO ME TO BE THE PERSON DESCRIBED IN AND WHO EXECUTED THE FOREGOING SURVEYOR'S CERTIFICATE AND HE ACKNOWLEDGED TO ME THAT HE EXECUTED THE SAME.

Jessica Keller
JESSICA KELLER
Notary Public
State of North Dakota
My Commission Expires Jan. 3, 2017

Jessica Keller
JESSICA KELLER
NOTARY PUBLIC
BURLEIGH COUNTY, NORTH DAKOTA



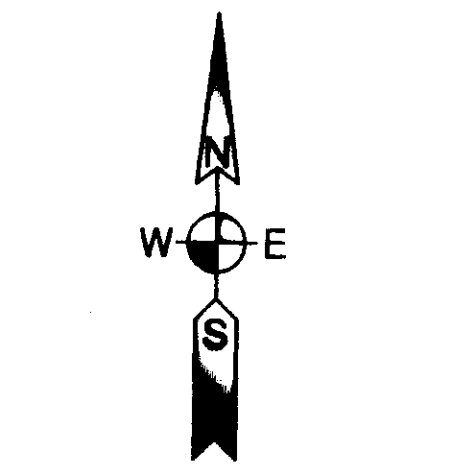
LEGEND

- MONUMENT SET (5/8" REBAR, CAPPED PLS #4730)
- MONUMENT FOUND

BENCHMARKS
BM #1: A 5/8" rebar with plastic cap marked PLS #4431 at the southeast corner of Lot 1, Block 1.
Elevation = 1895.11 (NAVD 88)

AREA TABLE

	Square ft.	Acres
Lots	97,610	2.24
Streets	4,287	0.10
Total	101,897	2.34



SCALE: 1 INCH = 60 FEET
ALL DIMENSIONS SHOWN ARE IN TERMS OF INTERNATIONAL FEET ORIENTATION OF THIS BEARING SYSTEM IS NORTH DAKOTA STATE PLANE COORDINATES, SOUTH ZONE, NAD83.

OWNER / DEVELOPER:
JAMES KESSLER
7520 SILTSTONE DRIVE
BISMARCK, ND 58503

SURVEYOR:
JAMES ALBER, PLS 4730
ULTEIG ENGINEERS, INC.
1412 BASIN AVENUE
BISMARCK, NORTH DAKOTA 58504

Rock Creek 3rd Subdivision
ETA
Plat Number 607.9

August 15, 2011

Prepared by:
Ulteig
Bismarck, North Dakota 58504
Phone: 701.256.6607 Fax: 701.224.1160
Web: www.ulteig.com
Drawn By: JKA
Checked By: JA
LSE #10.01670