



Community Engagement – 1

APPENDIX three a



THIS PAGE INTENTIONALLY LEFT BLANK

PURPOSE OF THE COMMUNITY ENGAGEMENT PLAN

The purpose of this Community Engagement Plan is to guide and direct the scope and process of identifying, engaging, informing and learning from key stakeholders. Each aspect of the Planning Area community will be brought into the process at appropriate points in the project effort.

STEERING COMMITTEE

The Burleigh County Land Use Plan Steering Committee, representing a cross-section of interests, includes staff from Burleigh County, the MPO, North Dakota Department of Transportation, the Federal Highway Administration, the Apple Creek Township and the City of Bismarck identified by the MPO, is the primary oversight group associated with this project. The KLJ team participated in all Steering Committee meetings. Meetings were held at key decision-points in the development of the Land Use Plan.

STAKEHOLDERS

The consultant team conducted 24 one-on-one interviews with project stakeholders. Project stakeholders are defined as individuals important to the data collection efforts of the study, or to the implementation of the resulting plan for the Planning Area. Individual stakeholders were identified by the consultant team, steering committee, the Burleigh County project manager and the MPO project manager. Stakeholder Groups are listed in Attachment A3-1.

Stakeholder Interviews

Stakeholder interviews were conducted from June 2015 to October 2015. Most interviews were held in person; a few were completed through conference calls. A total of x interviews were planned with key community and opinion leaders; x meetings were completed. Meetings averaged an hour in duration. Generally these meetings were held in the location of the interviewees’ choice. Flexibility and accommodation were used to ensure that the identified people are interviewed. Additional locations and times were established on a case-by-case basis. Notes from these interviews are included as Attachment 1.

COMMUNITY MEETINGS

The project team held two rounds of community meetings. The first was early in the project and the second “Community Choices” meetings were held while the draft documents were in preparation.



**Table A3-1
Stakeholder Groups**

Transportation	Agency Staff
Public Safety	Agency Staff
Business/Chambers of Commerce	Business Leaders/Business Owners
Developers/Builders	Key Owners/Leaders
Economic Development	Agency Staff/Key Leaders
Parks and Recreation	Agency Staff/Key Leaders
Public Works/Environmental/Water Resources	Agency, Authority Staff
County/Bismarck/Lincoln	Staff/Elected Officials
Schools/Education	Staff/School Board Members
Non-Profits	Staff/Key Volunteers/Leaders
Real Estate	Brokers



Selection of Meeting Location and Time

In selecting meeting locations the KLJ team considered the following factors:

- Preference to locations within the Planning Area
- Large space such as school auditorium, community center or comparable meeting room
- Meeting venue well-known throughout the community
- Adequate free parking available
- Seating for the expected number of participants and space for exhibits
- Facility rental costs

Considerations regarding the day/date/time/duration of the community meetings included choosing a day of the week to encourage the largest attendance (usually Monday, Tuesday and Thursday are the best days); date (avoid holidays); time of day (late afternoon to early evening is a preferred time); and duration of the meeting (two hours to three hours is the preferred length for public meetings).

JULY COMMUNITY MEETINGS

Meetings were held at the following four locations:

- Horizon Middle School - July 13
- Naughton Elementary School - July 14
- Menoken Elementary School - July 16
- Apple Creek Elementary School - July 23

These four schools were selected following the selection criteria. The schools are located in each quadrant of the Planning Area.

The agendas for each meeting were the same:

- 6:00 Open House
 - Exhibits
 - Team Availability
- 6:30 Presentation
 - Community Snapshot
 - Keypad Polling of Community Priorities and Issues
- 7:15 Team Availability

Meeting Outreach, Room Set Up and Meeting Experience

Meeting Outreach

Multiple outreach methods were used to inform the public of the July meetings and invite them to participate. These include:

- Postcards (Attachment A3-2) sent to property owners within the Planning Area owning parcels greater than 20 acres. The mailing list was derived from the County parcel database.
- Public Notice – legal ad in the Bismarck Tribune (Attachment A3-3).
- Press Release to Burleigh County media (Attachment A3-4).
- Notice of the meetings on the project website, MPO and County website (Attachment A3-5).
- Social media notice of the meetings both directly through the KLJ accounts and repeated through the MPO accounts (Attachment A3-6).
- Notice on Bismarck’s community access television’s “Community Calendar” (Attachment A3-7).
- Mentions of the upcoming meetings at the MPO meetings and the Burleigh County Planning Commission Meeting (which was televised and repeated on local community access television).
- Article in the Bismarck Tribune (Attachment A3-8) included information about the other three events.
- A KFYR segment on the day of the first meeting included information about the other three events (Attachment A3-9).
- E-mail blasts to a list developed from website visitors and survey responders who submitted their names.
- Notices regarding the four meetings were posted in locations where the community members usually gather (Attachment A3-10).

Meeting Room Set Up

A welcome sign and two team members greeted all participants. Sign-in sheets (Attachments A3-11, A3-12, A3-13 and A3-14) were available and participants were requested to sign in. Comment sheets were also available for participants.

The room set up for these four meetings provided space for exhibits and participant seating. Exhibits included five large-format boards (maps, schematics, diagrams, aerials, and fact boards) that presented the team’s initial “community snapshot” and comparisons of the Planning Area to overall Burleigh County and the state. Members of the KLJ team, knowledgeable about the particular topic areas, were available to address participants’ questions. Copies of these visuals are included as Attachment A3-15.

The meeting presentation was made through a PowerPoint presentation (Attachment A3-16). The Horizon Middle School provided projection and audio equipment; the KLJ team brought the necessary equipment to the other schools. Keypad polling for community preferences utilized Turning Point Technology with individual devices available for all participants.

Meeting Experience

Each meeting presented its own successes and challenges. Participation varied according to location and these totals reflect only those people who signed in or participated in the keypad polling: Horizon Middle School (48 participants), Naughton Elementary School (33 participants), Menoken Elementary School (22 participants) and Apple Creek Elementary School (13 participants). Many more people participated in the Naughton Elementary School event than the team expected, which made it difficult to see the exhibits. The keypad polling did not function at the Horizon Middle School; participants had to raise their hands and be counted to respond to the polling questions. That challenge actually encouraged more conversation and interaction than expected. Meetings at the other two locations went as planned.

Meeting Photographs

Photographs from the Horizon Middle School and the Menoken Elementary School meetings are in Attachment A3-17.

SEPTEMBER/OCTOBER COMMUNITY MEETINGS

Meetings were held at the following two locations:

- Horizon Middle School – September 29
- Menoken Elementary School – October 1

These two schools were selected because of their location (one in the north and one in the south) and the facility size.

The focus of these meetings was to share what the KLJ team learned through the July meetings, on-line polling and study, to present land use suitability analysis and preliminary limits of further study, to test policy concepts with keypad polling and to exchange ideas and gather comments and suggestions from the participants. The time frames in the agendas for these meeting were the same as for the July meetings but the meeting focus was on the community choices.

Meeting Outreach, Room Set Up and Meeting Experience

Meeting Outreach

As with the July meetings, multiple outreach methods were used to inform the public of the September/October meetings and invite them to participate. These include:

- Postcards (Attachment A3-18) sent to all property owners within the Planning Area. This change was made at the request of the Burleigh County Planning Commission. The mailing list was derived from the County parcel database.
- Public Notice – legal ad in the Bismarck Tribune (Attachment A3-19).
- Press Release to Burleigh County media (Attachment A3-20).
- Notice of the meetings on the project website, MPO and County website (Attachment A3-21).
- Social media notice of the meetings both directly through the KLJ accounts and repeated through the MPO accounts (Attachment A3-22).
- Mentions of the upcoming meetings at the MPO meetings and the Burleigh County Planning



Commission Meeting (which were both televised and repeated on local community access television).

- Article in Burleigh County Newsletter (Attachment A3-23).
- A KFYR-TV segment on the day of the first meeting included information about the subsequent meeting on October 1 (Attachment A3-24).
- E-mail blasts to a list developed from July participants, website visitors and survey responders who submitted their names.

Meeting Room Set Up

A welcome sign and two team members greeted all participants. Sign-in sheets (Attachments A3-25 and A3-26) were available and participants were requested to sign in. Comment sheets were also available for participants.

For the September 29 and October 1 community meetings, the largest of the previous four July meeting sites were selected to provide space for exhibits and increased community engagement due to the increased number of invitation postcards. Exhibits included the large boards presented at the July meetings plus additional exhibits. The new exhibits presented Residential and Industrial Suitability Maps and preliminary Residential, Industrial and Activity Center Land Use Maps. The preliminary mapping was available both on display boards and on tables. The tabletop exhibits were enlarged and information presented on aerial photographs to assist participants in locating specific property. Copies of these visuals are included as Attachment A3-27. Three members of the KLJ team, knowledgeable about the development of the Residential, Industrial and Activity Center Land Use Maps, were available to address participants' questions and capture their input on the exhibits.

The meeting presentation was made through a PowerPoint presentation (Attachment A3-28). The Horizon Middle School provided projection and audio equipment; the KLJ team brought the necessary equipment to the Menoken Elementary School. Keypad polling for community preferences utilized Turning Point Technology with individual devices available for all participants.

Meeting Experience

Meetings at the two locations went as planned. Participation varied according to location: Horizon Middle School had 55 participants and the Menoken Elementary School had 30 participants. An interesting aspect of these meetings is that only 16% of those in the October 29 meeting and only 26% of those at the October 1 meeting had attended any of the project's July community meetings.

Meeting Photographs

Photographs from the Horizon Middle School and the Menoken Elementary School meetings are in Attachment A3-29.

TOWNSHIP OFFICERS

Many of the Township Officers were included in the Stakeholder interviews. In addition, all of the Township Officers were included in the list of people mailed an invitation to the September 29 and October 1, 2015 Community Meetings.

BURLEIGH COUNTY PLANNING COMMISSION

Beyond one-on-one sessions as part of the stakeholder outreach, the KLJ team met with the Burleigh County Planning Commission at their regular meetings. These meetings, which included presentations and interaction with the Planning Commission, were all televised on local community access television.



MPO TECHNICAL ADVISORY COMMITTEE AND MPO POLICY BOARD

The Land Use Plan project manager has presented monthly study updates to both the MPO Technical Advisory Committee and MPO Policy Board. This information included the meeting schedule, meeting results and interim survey results. In September 2015, the MPO Policy Board meetings were televised on local community access television.

WEB SITE

The project website (www.BurleighGrowth2015.com) was live in June 2015. The website Home Page leads the visitor to a project-specific area where information can be published on an ongoing basis. An online comment link, available to visitors, is a good tool for collection of ongoing input and facilitates the construction of an email database of interested parties and stakeholders throughout the project. A copy of the website Home page is included as Attachment A3-30.

ON-LINE COMMUNITY SURVEY

An on-line Community Survey was live in February 2015 through the project website. This survey was promoted through the project website, at all project meetings and through social media. A total of 44 questions are included. As of October 22, 2015 a total of 237 people had taken the survey. Survey results are in Attachment A3-31 to this Appendix.

NEWSLETTER

A project newsletter was developed just prior to the second round of Community Meetings. This newsletter which presented a project overview and status report was distributed at the September/October Community Meetings, through the project website and was emailed to those registering on the project website, those who had taken the project survey and signed up for notifications. Newsletters were also sent to all Township officers. A copy of this newsletter is included as Attachment A3-1 to this Appendix.

APPENDIX 3 ATTACHMENTS

- 1 Project Newsletter #1
- 2 July Invitation Postcards
- 3 July Legal Ad
- 4 July Press Release
- 5 Meeting Website Notices
- 6 July Social Media
- 7 July Community Calendars
- 8 July Bismarck Tribune Article
- 9 July KFYR Segment
- 10 July Meeting Posters
- 11 July Sign-In Sheets
- 12 July Sign-In Sheets
- 13 July Sign-In Sheets
- 14 July Sign-In Sheets
- 15 July Meeting Exhibits
- 16 July PowerPoint Presentation
- 17 July Meeting Photographs
- 18 September/October Invitation Postcards
- 19 September/October Legal Ad
- 20 September/October Press Release
- 21 September/October Website Notices
- 22 September/October Social Media
- 23 Article in the Burleigh County Newsletter
- 24 September 29 KFYR-TV Segment
- 25 September Sign-In Sheets
- 26 October Sign-In Sheets
- 27 September/October Meeting Exhibits
- 28 September/October PowerPoint
- 29 September/October Photographs
- 30 Website Home Page Sample
- 31 On-line Community Survey and Results



Attachment 3-1 – Project Newsletter #1

September 2015 Newsletter

- September 29th and October 1st Community Workshops
- Land Use Study on-line survey available thru October



Looking Forward to 2040

Burleigh County is expected to grow to over 136,000 by the year 2040. While growth is generally perceived as positive, there are some noteworthy concerns, specifically the impact of rapid growth on public service costs, the ability of the area to grow in an efficient manner, and the ability to maintain the high quality of life enjoyed by residents today.

Burleigh County and the Bismarck-Mandan MPO are developing a Land Use Study to address the areas shown in tan (Burleigh County) and orange (MPO) on the map. This study area includes parts of 11 townships within Burleigh County: Apple Creek, Burnt Creek, Crofte, Fort Rice, Gibbs,



Glenview, Lyman, Menoken, Naughton, Phoenix and River View. The County handles the zoning for nine of these townships. Almost 112 square miles of the 295 square mile study area, including Apple Creek Township and part of Naughton Township, are within the MPO boundary. This Land Use Study meets the commitment in the adopted Burleigh County Comprehensive Plan to “Adopt a Comprehensive Plan and a Land Use Plan to guide the future growth within Burleigh County.”

Ray Ziegler is the project manager for Burleigh County and Rachel Drewlow is the MPO’s project manager. In March 2015, the selection team chose KLJ as the project consultant for this important planning study. The planning horizon for this Land Use Study is 2040.

Status of the Land Use Study

The Land Use Study has involved hundreds of Burleigh County residents and other interested parties. Presentations have been made before the Burleigh

COMMUNITY CHOICES WORKSHOPS
6:30 to 8:30 pm

Tuesday, September 29, 2015
Horizon Middle School
500 Ash Coulee Dr.
Bismarck ND 58503

Thursday, October 1, 2015
Menoken Elementary School
412 Bismarck St. N
Menoken ND 58558



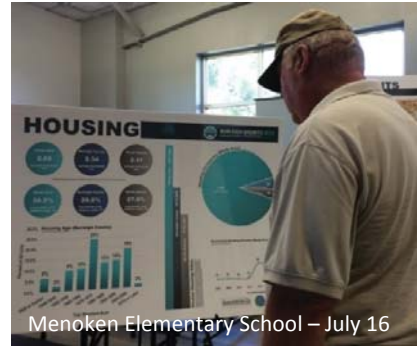
For further information: www.BurleighGrowth2015.com. The project website includes current mapping and data about the study area, the project schedule, results of the community meetings and links to the project survey.

County Planning Commission. The project website is updated regularly with study area information. To date, over 200 people have taken the project’s on-line survey. Four community workshops were held in July 2015; participants viewed constraints maps and charts representing socio-economic data and development trends. KLJ, the project consultant, presented additional information, identified trends and led the groups in community polling of important issues. The result of this polling, other feedback from meeting participants and results of the project’s on-line survey informed the site-suitability analysis for future residential, commercial and industrial development within the study area.



Naughton Elementary School – July 14

Preliminary site suitability mapping is complete. From that analysis, KLJ planners developed mapping indicating the preliminary limits of their further study. At the September 29th and October 1st Community Choices Workshops, participants will have the opportunity to review the preliminary mapping and provide input to the next stage of the Burleigh County Land Use Study. This is a unique opportunity to bring residents and property owners together to discuss land use choices and to consider growth choices for the future. The planning team will be available before and after the meeting.



Menoken Elementary School – July 16

With the community workshop input and additional feedback from the project survey (available through October), the KLJ planners will develop the draft Burleigh County Land Use Plan. This plan will include three elements: Background Data and Analysis, Goals and Policies, and the Future Land Use Map.

Effect of the Land Use Plan

The Land Use Plan resulting from this study will be the primary tool for guiding the future development of this study area within Burleigh County. On a daily basis the County is faced with tough choices about growth, housing transportation and service delivery. A Land Use Plan provides a guide for making these decisions.

The Land Use Plan will not change the zoning of any property. The Future Land Use Plan is about the future. It will depict a long-term vision of how and when this study area will change over the next twenty-five years to accommodate expected population and job growth. The Zoning Map is about what is allowed today. Zoning changes will only happen if the property owner requests that the County change the existing zoning designation.

What’s Next?

As indicated, the KLJ team will incorporate input from the community workshops and on-line polling with their previous study and develop a draft Land Use Plan. That draft will be presented to both the Burleigh County Planning Commission and County Commission at their November and December public meetings. Draft documents will be available on the project website www.BurleighGrowth2015.com for review prior to consideration.

Preliminary Survey Results

- 85% have lived in Burleigh County for more than 10 years; many more than 20.
- 72 % - important to preserve the rural character of the county
- Over 80% believe that developers should pay for the extension of services to new development
- Almost all agreed that “the county should consider land use compatibility in zoning decisions.”
- Almost all agreed/strongly agreed that new development “should be encouraged in or near cities rather than in rural areas.”
- Best location for industrial uses: “near existing industrial uses” and “away from residential uses”
- Most pressing issues facing the county: traffic 76%, cost of living 67%, safety/crime 66% and affordable housing 64%.

Survey is still available at www.BurleighGrowth2015.com



Attachment 3-2 – July Invitation Postcard



BURLEIGH GROWTH 2015

BURLEIGH COUNTY LAND USE STUDY

Open House Workshops 6:00 to 7:30 p.m.

Each meeting will begin with an open house format and will include maps and informational displays.

Presentations are scheduled for 6:30.

- Background information about the county.
- Opportunity for attendees to share their ideas about the county's future.

The planning team will be available before and after the presentation.

Join us at a location near you:
Same presentations at all locations

Monday, July 13, 2015

Horizon Middle School
500 Ash Coulee Dr.
Bismarck, ND 58503

Tuesday, July 14, 2015

Naughton Elementary School
9101 123rd Ave. NE
Bismarck, ND 58503

Thursday, July 16, 2015

Menoken Elementary School
412 Bismarck St. N
Menoken, ND 58558

Thursday, July 23, 2015

Apple Creek Elementary School
2000 93rd St. SE
Bismarck, ND 58504



BURLEIGH GROWTH 2015

BURLEIGH COUNTY LAND USE STUDY

JOIN US

Burleigh County and the Bismarck-Mandan Metropolitan Planning Organization (MPO) are hosting a series of meetings to kick-off their Burleigh County Future Land Use Study. The study area includes portions of eleven townships within Burleigh County: Apple Creek, Burnt Creek, Crofte, Fort Rice, Gibbs, Glenview, Lyman, Menoken, Naughton, Phoenix, and River View. More information about the study, including a detailed study area map, can be found at www.BurleighGrowth2015.com.

One of the first opportunities to participate is to attend any one of the four Open House Workshops being held this July.

We hope to see you there.



P.O. Box 1157
Bismarck, ND 58502-1157

PUBLIC MEETING BURLEIGH COUNTY LAND USE STUDY

WHY?

The Bismarck-Mandan Metropolitan Planning Organization (MPO) and Burleigh County are partnering to complete the Burleigh County Land Use Study, which will result in a guiding document to help facilitate land use decisions in the county. Primary elements that the study will include are land use goals and policies, and a future land use map. KLJ, a multi-disciplinary consulting firm, is assisting with the study.

The study area includes portions of eleven townships within Burleigh County: Apple Creek, Burnt Creek, Crofte, Fort Rice, Gibbs, Glenview, Lyman, Menoken, Naughton, Phoenix, and River View. More information about the study, including a detailed study area map, can be found at www.burleighgrowth2015.com.

Public meetings will be held at four sites in the County. Each meeting will include:

- Brief presentation of background information about the county.
- Opportunity for attendees to share their ideas about the county's future.

WHEN AND WHERE?

Formal Presentation 6:30 p.m. to 7:00 p.m.
Open House: 6:00 p.m. to 7:30 p.m.

Monday, July 13
Horizon Middle School
500 Ash Coulee Dr.
Bismarck, ND

Tuesday, July 14
Naughton Elementary School
9101 123rd Ave. NE
Bismarck, ND

Thursday, July 16
Menoken Elementary School
412 Bismarck St. N
Menoken, ND

Thursday, July 23
Apple Creek Elementary School
2000 93rd St. SE
Bismarck, ND

OPEN HOUSE CONDUCTED BY

Bismarck-Mandan MPO, Burleigh County, and KLJ

Representatives from the Bismarck-Mandan MPO, Burleigh County, and KLJ will be on hand to answer your questions and discuss your concerns.

Written comments about this project should be mailed to Carron Day; KLJ Project Manager; P.O. Box 1157, Bismarck, ND 58503. Comments can also be directed through the project webpage at www.burleighgrowth2015.com.

Any individual requiring a special accommodation to allow access or participation at the meeting is asked to notify Rachel Drewlow, Transportation Planner, Bismarck-Mandan MPO at (701) 355-1852 of his/her needs five (5) days in advance of the meeting. Also, materials can be provided in alternate formats: large print, braille, cassette tape or on computer disk for people with disabilities or with limited English proficiency (LEP) by contacting the MPO at least (5) days prior to the meeting at the number listed above.



Attachment 3-4 – July Press Release

Contact:

Carron Day, Project Manager
KLJ
4585 Coleman Street
Bismarck, ND 58503
701 355 8723

PUBLIC ANNOUNCEMENT

Burleigh County Kicks Off Future Land Use Study

July 8, 2015

Burleigh County has experienced a heightened level of growth in recent years. To address this, the Bismarck-Mandan Metropolitan Planning Organization (MPO) and Burleigh County selected KLJ to develop the Burleigh County Future Land Use Study. This work is underway with the first community meetings scheduled for 6:00 – 7:30 pm on four days:

Monday, July 13

Horizon Middle School
500 Ash Coulee Dr.
Bismarck ND 58503

Thursday, July 16

Menoken Elementary School
412 Bismarck St. N
Menoken ND 58558

Tuesday, July 14

Naughton Elementary School
9101 123rd Ave. NE
Bismarck ND 58503

Thursday, July 23

Apple Creek Elementary School
2000 93rd St. SE
Bismarck ND 58504

According to KLJ’s Project Manager Carron Day, these community meetings will present a snapshot of Burleigh County today and focus on the issues related to future growth in the study area. The planning team would like to hear from study area residents, property owners, business owners and other interested parties. All meetings will begin at 6:00 pm with an open house format and presentations are scheduled for 6:30. KLJ community planners will engage participants through keypad polling and community discussion.

The study area includes portions of eleven townships within Burleigh County (Apple Creek, Burnt Creek, Crofte, Fort Rice, Gibbs, Glenview, Lyman, Menoken, Naughton, Phoenix, and River View) located outside of the cities of Bismarck and Lincoln, and their extraterritorial zoning area. The total study area covers about 295 square miles. Approximately 112 square miles are located within the MPO boundary and 183 square miles are located outside of that area. A map of the study area is attached.

The project website www.BurleighGrowth2015.com includes maps, background information and a community survey.

Attachment 3-5 – Meeting Website Notices

[Departments](#) [City Commission](#) [Community Links](#) [Residents](#) [Business](#) [Visitors](#)



Bismarck

Capital City of North Dakota

Home + SHARE Print RSS

- Agendas & Minutes
- Bismarck Streets
- Capital Area Transit (CAT)
- Convention & Visitors Bureau
- Growth Management Plan
- Vote
- Northern Plains Commerce Centre
- On-Line Permits - eTRAKIT
- Property Information
- Public Notices
- Strategic Plan
- View Government Meetings
- Water Bill Payment
- Water Meter Installation Project
- Emergency Notification System Registration


Bids & RFPs


Report a Concern


Jobs


How Are We Doing?


Online Services


Maps

You are here: [Home](#) > [Headlines & Announcements](#)

Public Notices

Posted on: June 26, 2015

MPO Announces Public Meetings for the Burleigh County Land Use Study

Public meetings for the Burleigh County Land Use Study will be held at four separate locations in Burleigh County to provide opportunities for attendees to share their ideas about the county's future.

Each meeting will begin at 6:00 pm with an open house format followed by a formal presentation from 6:30 pm to 7:00 pm, and will return to the open house format until the conclusion of the meeting at 7:30 pm.

Following are the dates and locations of each meeting:

Monday, July 13 - Horizon Middle School - 500 Ash Coulee Drive - Bismarck, ND
Tuesday, July 14 - Naughton Elementary School - 9101 123rd Ave. NE - Baldwin, ND
Thursday, July 16 - Menoken Elementary School - 412 Bismarck St. N - Menoken, ND
Thursday, July 23rd - Apple Creek Elementary School - 2000 93rd St. NE - Bismarck, ND

The Bismarck-Mandan Metropolitan Planning Organization (MPO) and Burleigh County are partnering to complete the Burleigh County Land Use Study, which will result in a guiding document to help facilitate land use decisions in the county. Primary elements that the study will include are land use goals and policies, and a future land use map. KLJ, a multi-disciplinary consulting firm, is assisting with the study.

The study area includes portions of eleven townships within Burleigh County: Apple Creek, Burnt Creek, Crofte, Fort Rice, Gibbs, Glenview, Lyman, Menoken, Naughton, Phoenix, and River View.

Representatives from the Bismarck-Mandan MPO, Burleigh County, and KLJ will be on hand to answer your questions and discuss your concerns.

Written comments about this project should be mailed to Carron Day; KLJ Project Manager; P.O. Box 1157, Bismarck, ND 58503. Comments can also be directed through the project website.

Any individual requiring a special accommodation to allow access or participation at the meeting is asked to notify Rachel Drewlow, Transportation Planner, Bismarck-Mandan MPO at (701) 355-1852 of his/her needs a minimum of five (5) days in advance of the meeting.

[Project Website](#)



COUNTY COMMISSION

DEPARTMENTS

BOARDS/COMMITTEES

ABOUT US

PROPERTY TAX

CONTACT US

ELECTIONS

JOB LISTINGS

MAPS

PUBLIC NOTICES

TOWNSHIPS

LINKS

HOW DO I?



FOR YOUR INFORMATION [READ ALL NEWS](#)

Burleigh County Land Use Study Open House Workshops

Four workshops are being hosted in July. Please click [here](#) for dates, times, and ...

Lincoln Road Closure

Beginning Monday, July 6, 2015 at 9:00 a.m., the Burleigh County Highway Department will begin the reconstruction of Lincoln Road. This phase of work will necessitate the closure of Lincoln Road between 66th St SE and Benteen Drive until ...

43rd Ave NE and Centennial Rd Traffic Signals

Burleigh County is happy to announce the activation of the 43rd Avenue NE and Centennial Road traffic signals on Tuesday, June 9, 2015 shortly after the morning rush hour. Click [here](#) to see the press ...



CALENDAR OF EVENTS [VIEW ALL EVENTS](#)

- 7/20/2015 **Burleigh County Commission Meeting**
- 7/23/2015 **Burleigh County land Use Study**
- 7/27/2015 **Law Enforcement Exam**
- 7/30/2015 **Burleigh County Social Service Board Meeting**
- 7/31/2015 **Outdoor Warning Siren Test**

Attachment 3-6 – July Social Media


facebook
Sign Up


Email or Phone
Password
Keep me logged in Forgot your password?
Log In

MY EVENTS

- 22 Upcoming
- Calendar
- Subscribed
- Past
- Create

MPO Study Area
Burleigh County Study Area





BURLEIGH GROWTH 2015
BURLEIGH COUNTY LAND USE STUDY
www.BurleighGrowth2015.com

JUL 14 Burleigh County Future Land Use Study Public Meeting

Public · Neighborhood · Hosted by Bismarck Mandan Metropolitan Planning Organ...

Join
Save
Invite

Tuesday, July 14 at 6:00pm - 7:30pm in CDT
about 3 months ago

Naughton Elementary School
9101 123rd Ave NE, Bismarck, North Dakota 58503 Show Map


GUESTS

1	0	0
went	maybe	invited

English (US) · Privacy · Terms · Cookies · Advertising · Ad Choices · More · Facebook © 2015


The Bismarck-Mandan Metropolitan Planning Organization (MPO) along with Burleigh County are hosting a series of meetings to kick-off their Burleigh County Future Land Use Study. Each meeting will include a brief presentation and an opportunity for attendees to share their ideas about the county's future. The study area includes portions of eleven townships within Burleigh County. More information about the study, including a detailed study area map, can be found at www.BurleighGrowth2015.com.


POSTS



Bismarck Mandan Metropolitan Planning Organization - MPO updated the event photo.
July 10 · 🌐

MPO Study Area
Burleigh County Study Area





BURLEIGH GROWTH 2015
BURLEIGH COUNTY LAND USE STUDY
www.BurleighGrowth2015.com

Like Comment Share

page A65



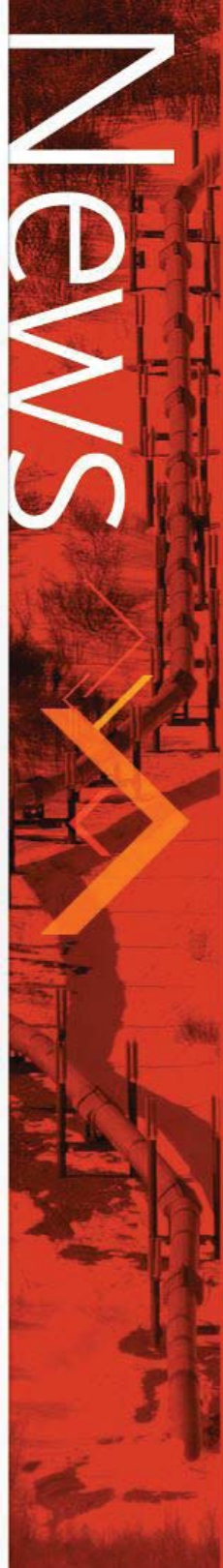
- About
- Markets
- Expertise
- Projects
- Careers

- KLJ SOLUTIONS
- CONTACT US
- NEWS & EVENTS
- BLOG
- PROJECTS FOR BID
- EMPLOYEE LOGIN

Search ...



© Copyright 2015 KLJ,
All Rights Reserved.
[Privacy Policy](#)



Community Meetings scheduled For Burleigh County Future Land Use Study

Posted on July 13th, 2015    

Burleigh County, located in North Dakota, has experienced an increase in population over recent years. Therefore, Bismarck-Mandan Metropolitan Planning Organization (MPO) and Burleigh County selected KLJ to develop the Burleigh County Future Land Use Study. The study is underway with the first community meetings scheduled from 6:00 – 7:30 pm. Four meetings will be held in July.

Monday, July 13 – Bismarck

Horizon Middle School
500 Ash Coulee Dr.

Tuesday, July 14 – Bismarck

Naughton Elementary School
9101 123rd Ave. NE

Thursday, July 16 – Menoken

Menoken Elementary School
412 Bismarck St. N

Thursday, July 23 – Bismarck

Apple Creek Elementary School
2000 93rd St. SE

According to KLJ's Project Manager, Carron Day, the community meetings will present a snapshot of Burleigh County today and focus on the issues related to future growth in the study area. The planning team would like to hear from study area residents, property owners, business owners and other interested parties. All meetings will begin at 6:00 pm with an open house format and presentations scheduled for 6:30. KLJ community planners will engage participants through keypad polling and community discussion.

The study area includes portions of 11 townships within Burleigh County (Apple Creek, Burnt Creek, Crofte, Fort Rice, Gibbs, Glenview, Lyman, Menoken, Naughton, Phoenix, and River View) located outside the cities of Bismarck and Lincoln, and their extraterritorial zoning area. The total study area covers about 295 square miles. Approximately 112 square miles are located within the MPO boundary and 183 square miles are located outside of that area. A map of the study area is attached.

The project website www.BurleighGrowth2015.com includes maps, background information and a community survey.

Burleigh County
@burleighco

Four open house workshops have been schedules to present information on the Burleigh Growth 2015, the Burleigh...
fb.me/1ZqMk3iGx

RETWEET
1

2:47 PM - 10 Jul 2015

Reply to @burleighco

Trends
#EasyThrowback Promoted by Google Photos world series #happydussehra
#backtothefuture #cerealsongs #empire andhra pradesh #whenamericawasgreat mohan bhagwat traffic update angela basset

© 2015 Twitter About Help Terms Privacy Cookies Ads info



Wn.COM NEWS SEARCH

TOP STORIES WORLD BUSINESS TECHNOLOGY SPORT ENTERTAINMENT HEALTH

NEWS VIDEOS LIVE CHAT WIKIPEDIA

Community Workshops scheduled for Burleigh County Land Use Study (KLJ - Kadrmas Lee & Jackson ...

Trending News

- Toronto Blue Jays
- Joe Biden
- Lamar Odom
- Paul Ryan
- Bashar al-Assad
- 2012 Benghazi attack
- Chris Rock
- Benjamin Netanyahu
- Ferrari S.p.A.
- YouTube



(Source: KLJ - Kadrmas Lee & Jackson Inc) The Burleigh County Land Use Study team, backed by the Bismarck-Mandan Metropolitan Planning Organization (MPO) and Burleigh County, requests community comments on where and how eleven townships...

f Like 130k

t Follow 6,176 followers

G+1 16k

Public Technologies 2015-09-28



Like 0 **G+1** 0 **Tweet** 0

[Read Full Article](#) [Related Videos](#) [News Article Search](#)

BURLEIGH GROWTH 2015
BURLEIGH COUNTY LAND USE STUDY

Open House Workshops

presented by Bismarck-Mandan Metropolitan
Planning Organization & Burleigh County

6:00 - 7:30 pm

*Same presentation at all locations

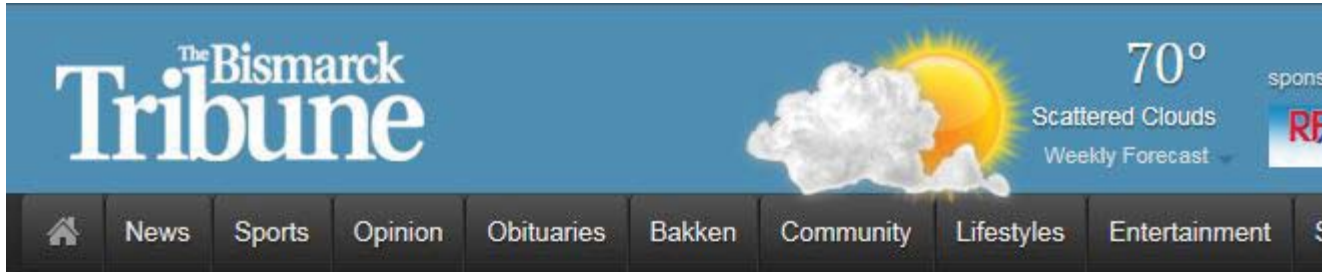
Info: www.BurleighGrowth2015.com

Mon, July 13
Horizon Middle School
500 Ash Coulee Dr, Bismarck

Tues, July 14
Naughton Elementary School
9101 123rd Ave NE, Bismarck

Thurs, July 16
Menoken Elementary School
412 Bismarck St. N, Menoken

Thurs, July 23
Apple Creek Elementary School
2000 93rd St. SE, Bismarck



Home / News / Bismarck-Mandan News

Burleigh to hold land-use study meetings

Recommend Tweet g+1 Share Print Email

July 11, 2015 1:15 pm • By [LeAnn Eckroth](#)

Burleigh County, KLJ and the Bismarck-Mandan Metropolitan Planning Organization will be hosting a series of land-use study meetings to address growth in the area. Each meeting will be held from 6 to 7:30 p.m on the following dates:

- Monday: Horizon Middle School in Bismarck, 500 Ash Coulee Drive
- Tuesday: Naughton Elementary School, 9101 123rd Ave. N.E., Bismarck
- July 16: Menoken Elementary School, 412 Bismarck St., Menoken, N.D.
- July 23: Apple Creek Elementary School, 2000 93rd S.E.

The study area will include 11 townships within Burleigh County, including Apple Creek, Burnt Creek, Crofte, Fort Rice, Gibbs, Glenview, Lyman, Menoken, Naughton, Phoenix and River View.

Visit www.BurleighGrowth2015.com for more information.

The intent of the meetings is to present a snapshot of Burleigh County today and focus on growth-related issues.

The meetings will start with an open house format and move to a presentation. KLJ planners will use a keypad polling device to gauge what participants favor.

(Reach LeAnn Eckroth at 701-250-8264 or leann.eckroth@bismarcktribune.com)

Attachment 3-9 – July KFYP Segment



- Home
- News ▾
- Weather ▾
- Sports ▾
- Video ▾
- Features ▾
- Contests/Promotions
- Country Morning ▾
- ND Today
- About ▾

Planners Poll Burleigh County Residents About Area Growth Plan



Posted: Mon 9:18 PM, Jul 13, 2015

By: [Nina Carter - Email](#)

[Home](#) / [Headlines List](#) / [Article](#)

Burleigh County has the second largest population in the state, and the expansion isn't slowing down.

On Monday, planners found out how some residents feel the growth should be handled.

The study area includes parts of 11 townships and covers nearly 300 square miles, which is mostly rural.

When polled, the majority of meeting participants felt that the population growth had mostly a negative impact, including congested roads and zoning they didn't feel was compatible with surrounding [properties](#).

Planners are using these meetings to get feedback and target residents concerns to include in the plan.

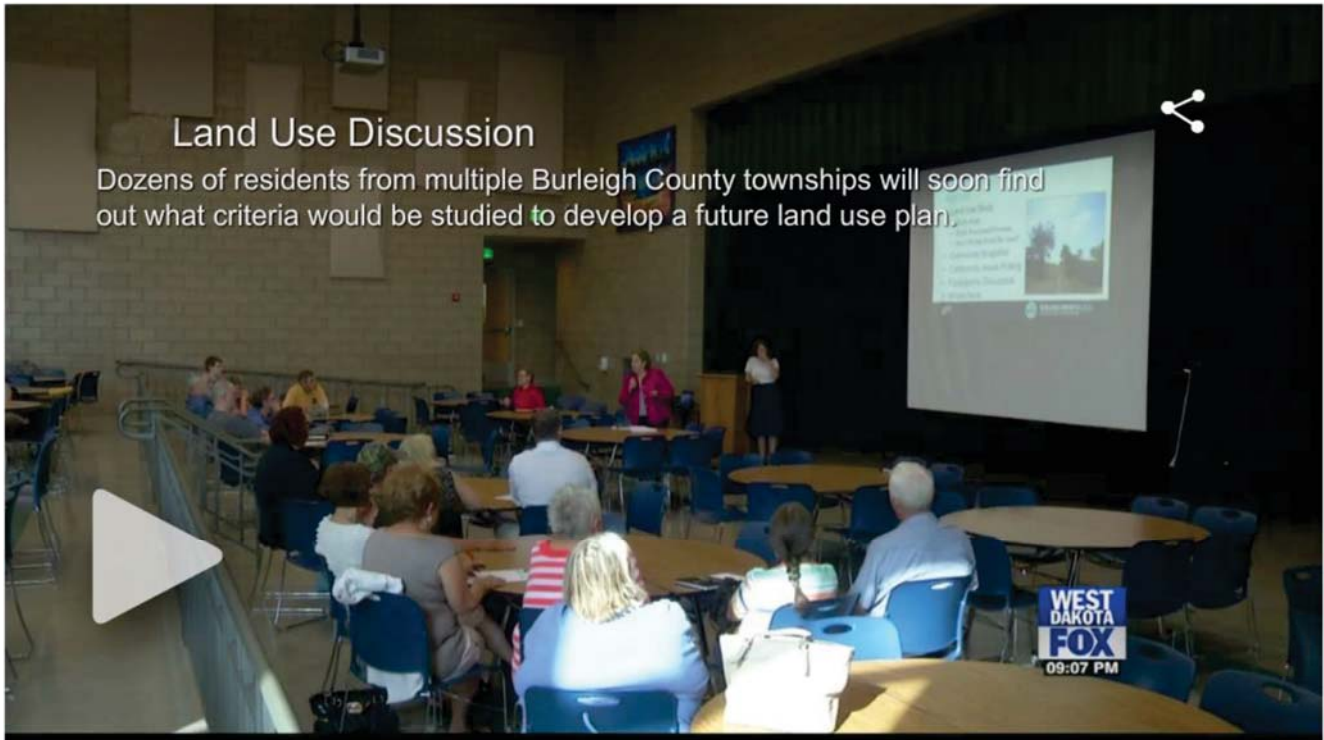
Monday was the first of four public meetings being held this week to introduce the study. The next meeting is Tuesday at 6 p.m. at Naughton Elementary.

More information can be found at [burleighgrowth2015.com](#).



Related Links

- [Burleigh Growth 2015](#)



Land Use Discussion

Dozens of residents from multiple Burleigh County townships will soon find out what criteria would be studied to develop a future land use plan.

Burleigh County has the second largest population in the state, and the expansion isn't slowing down.

On Monday, planners found out how some residents feel the growth should be handled.

The study area includes parts of 11 townships and covers nearly 300 square miles, which is mostly rural.

When polled, the majority of meeting participants felt that the population growth had mostly a negative impact, including congested roads and zoning they didn't feel was compatible with surrounding [properties](#).

Planners are using these meetings to get feedback and target residents concerns to include in the plan.

Monday was the first of four public meetings being held this week to introduce the study. The next meeting is Tuesday at 6 p.m. at Naughton Elementary.

More information can be found at burleighgrowth2015.com.



Related Links

[➔ Burleigh Growth 2015](#)



Planners Poll Burleigh County Residents About Area Growth Plan

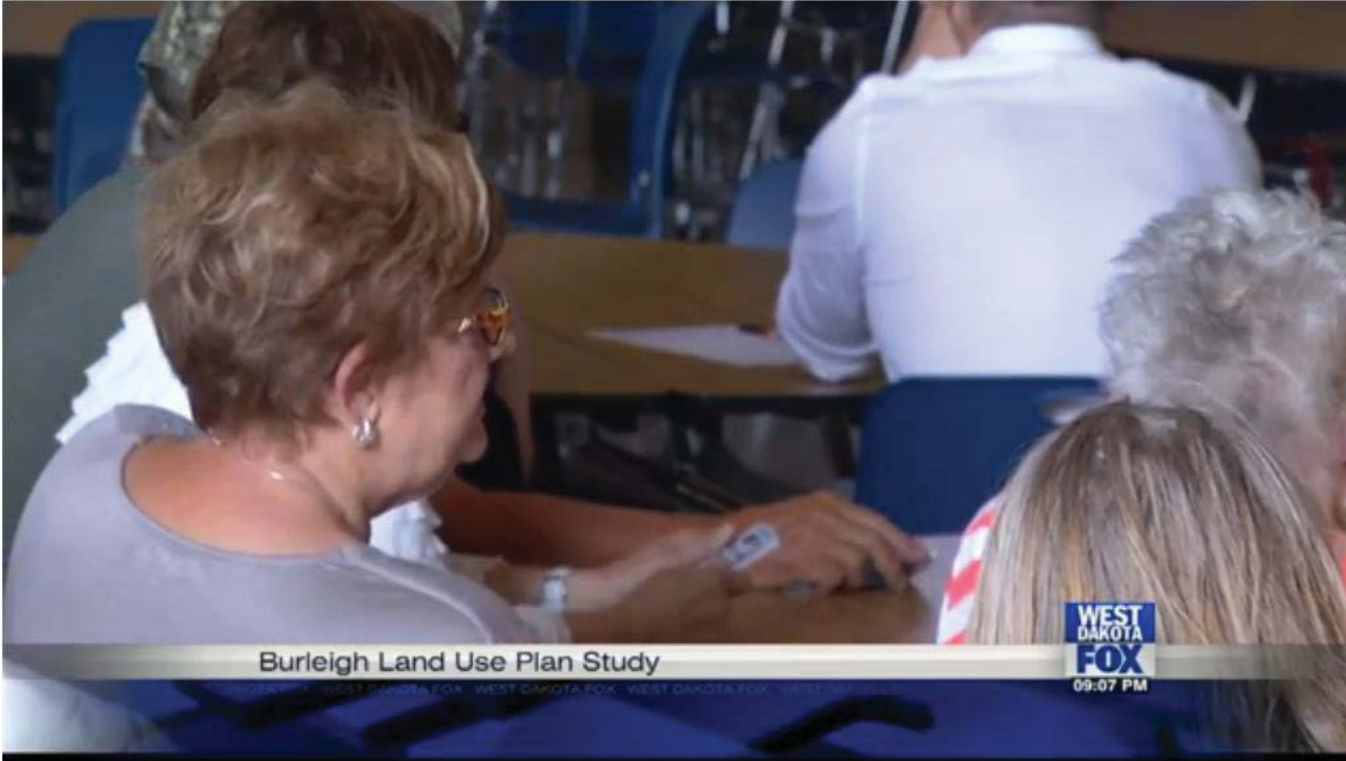


Posted: Mon 9:44 PM, Jul 13, 2015

By: Nina Carter - Email

[Home](#) / [West Dakota Fox](#) / [Headlines List](#) / [Article](#)





Burleigh Land Use Plan Study

WEST
DAKOTA
FOX
09:07 PM

Attachment 3-10 – July Meeting Posters



BURLEIGH GROWTH 2015

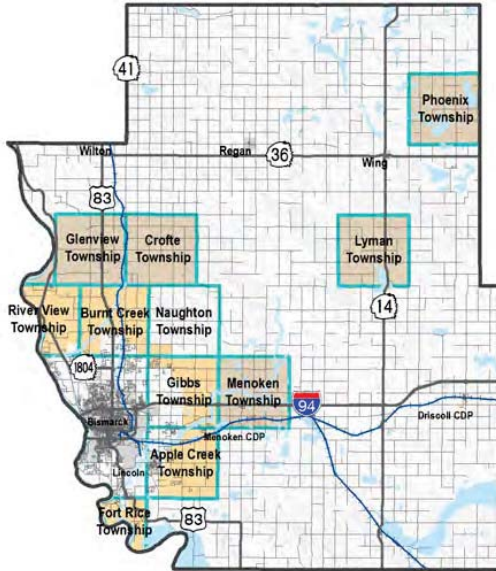
BURLEIGH COUNTY LAND USE STUDY

Join us

Open House Workshops

6:00 to 7:30 p.m.

Presented by:



For more information about the land use study for these Townships:
www.BurleighGrowth2015.com

Same presentation at all locations

Monday, July 13, 2015

Horizon Middle School
500 Ash Coulee Dr.
Bismarck ND 58503

Tuesday, July 14, 2015

Naughton Elementary School
9101 123rd Ave. NE
Bismarck ND 58503

Thursday, July 16, 2015

Menoken Elementary School
412 Bismarck St. N
Menoken ND 58558

Thursday, July 23, 2015

Apple Creek Elementary School
2000 93rd St. SE
Bismarck ND 58504



Attachment 3-11 – July Sign In Sheets (Apple Creek)

SIGN-IN SHEET



Meeting Location <u>Apple Creek School</u>	Meeting Type <u>Public Input Meeting</u>	Meeting Date <u>7-23-15</u>
Project Number	PCN	
Project Description <u>Burleigh County Future land Use Study - PIM #1</u>		

1

Name (Please print) <u>Francine M Aune</u>	Title/Representing		
Address <u>3412 Edgewood Village loop</u>			
City <u>Bismarck</u>	State <u>ND</u>	Zip code <u>58503</u>	Email

2

Name (Please print) <u>Tracey Weber</u>	Title/Representing		
Address <u>1100 Pleasant St Apt 2</u>			
City <u>Bismarck</u>	State <u>ND</u>	Zip code <u>58504</u>	Email <u>tracey.weber@kljeng.com</u>

3-4

Name (Please print) <u>Larry + Pauline Hjelmeland</u>	Title/Representing		
Address <u>1937 106 St SE</u>			
City <u>Bismarck</u>	State <u>ND</u>	Zip code <u>58504</u>	Email

5

Name (Please print) <u>Mike Martin</u>	Title/Representing <u>Resident</u>		
Address <u>1600 158th ST NE</u>			
City <u>Mendota</u>	State <u>ND</u>	Zip code <u>58558</u>	Email

6

Name (Please print) <u>Kerry Olson</u>	Title/Representing <u>Apple Creek Twp</u>		
Address <u>1201 100 St SE</u>			
City <u>Bismarck</u>	State <u>ND</u>	Zip code <u>58504</u>	Email

7

Name (Please print) <u>Floyd E Benz</u>	Title/Representing <u>Resident</u> (2)		
Address			
City <u>Bismarck</u>	State <u>ND</u>	Zip code	Email

3-4

Name (Please print) <u>DAN & LORI REIS</u>	Title/Representing <u>Resident</u>		
Address <u>2512 93rd St SE</u>			
City <u>BISMARCK</u>	State <u>ND</u>	Zip code <u>58504</u>	Email

SIGN-IN SHEET



Meeting Location <u>Apple Creek School</u>	Meeting Type <u>Public Input Meeting</u>	Meeting Date <u>7-23-15</u>
Project Number	PCN	
Project Description <u>Burleigh County Future land use Study -PIM #1</u>		

10

Name (Please print) <u>Cyndy Meidinger</u>		Title/Representing <u>CLERK ACT</u>	
Address <u>6305 Omar St</u>			
City <u>Bis</u>	State <u>ND</u>	Zip code <u>58504</u>	Email <u>Cyndy@bektel.com</u>

11

Name (Please print) <u>Dale Helbling</u>		Title/Representing	
Address <u>5612 Country Creek Dr</u>			
City <u>Bismarck</u>	State <u>ND</u>	Zip code <u>58503</u>	Email

12

Name (Please print) <u>Trudy Riehl</u>		Title/Representing	
Address <u>2155 19th St SE</u>			
City <u>Bis</u>	State	Zip code <u>58504</u>	Email <u>Trudy.Riehl@yahoo.com</u>

3

Name (Please print) <u>Tom Emde</u>		Title/Representing	
Address <u>2737 ORANGEHURST ST</u>			
City <u>ARPKA</u>	State <u>FL</u>	Zip code <u>32703</u>	Email <u>tkemde@cfl.rr.com</u>

Name (Please print) <u>Rachel Drenlow</u>		Title/Representing <u>MPO</u>	
Address			
City	State	Zip code	Email

Name (Please print)		Title/Representing	
Address			
City	State	Zip code	Email

Name (Please print)		Title/Representing	
Address			
City	State	Zip code	Email



Attachment 3-12 – July Sign In Sheets (Horizon Middle School)

SIGN-IN SHEET

Bismarck-Mandan 
METROPOLITAN PLANNING ORGANIZATION

Meeting Location <i>Horizon School</i>	Meeting Type <i>Public Input Meeting</i>	Meeting Date <i>7-13-15</i>
Project Number	PCN	
Project Description <i>Burleigh County Land Use Study - PIM #1</i>		

Name (Please print) <i>Jul Anderson</i>		Title/Representing	
Address <i>1500 Reno DR</i>			
City <i>Bismarck</i>	State <i>ND</i>	Zip code <i>58504</i>	Email <i>JOGLAND Karen @ Bis. midco.met</i>

Name (Please print) <i>Michael Anderson</i>		Title/Representing	
Address <i>4013 Granite Drive</i>			
City <i>Bismarck,</i>	State <i>ND</i>	Zip code <i>58503</i>	Email <i>mianders @ bis. midco.net</i>

Name (Please print) <i>Rich Bernhardt</i>		Title/Representing	
Address <i>623 E Bristol Dr</i>			
City <i>Bismarck</i>	State <i>ND</i>	Zip code <i>58501</i>	Email <i>rsbernhardt@yahoo.com</i>

Name (Please print) <i>ROBERT & JUDY DEWITZ</i>		Title/Representing	
Address <i>5300 STREAM PL</i>			
City <i>BISMARCK</i>	State <i>N.D</i>	Zip code <i>58503</i>	Email

Name (Please print) <i>Jerry + Linda O'Shea</i>		Title/Representing	
Address <i>11619 NE 26th St.</i>			
City <i>Bismarck</i>	State <i>N.D</i>	Zip code <i>58503</i>	Email

Name (Please print) <i>Wes Vettel</i>		Title/Representing	
Address <i>7907 Runnel Rd</i>			
City <i>Bis</i>	State <i>ND</i>	Zip code <i>58503</i>	Email

Name (Please print) <i>Dwight Mulcke</i>		Title/Representing	
Address <i>17755 5th Street NE</i>			
City <i>Baldwin,</i>	State <i>ND</i>	Zip code <i>58521</i>	Email <i>dwight.mulcke@wstevens.com</i>

SIGN-IN SHEET



Meeting Location <u>Horizon School</u>	Meeting Type <u>Public Input Meeting</u>	Meeting Date <u>7-13-15</u>
Project Number		PCN
Project Description <u>Burleigh County Land Use Study - PIM #1</u>		

Name (Please print) <u>LARRY HOGE</u>		Title/Representing <u>SELF</u>	
Address <u>2714 TYLER PKY</u>			
City <u>Bis</u>	State <u>ND</u>	Zip code <u>58503</u>	Email <u></u>

Name (Please print) <u>Vernon J. Spitzer</u>		Title/Representing	
Address <u></u>			
City <u>Baldwin</u>	State <u>ND</u>	Zip code <u>58521</u>	Email

Name (Please print) <u>Violet L. Spitzer</u>		Title/Representing	
Address			
City <u>Baldwin</u>	State <u>ND</u>	Zip code <u>58521</u>	Email

Name (Please print) <u>Linnæa Ehl</u>		Title/Representing <u>SELF</u>	
Address <u>1410 territory Dr</u>			
City <u>Bismarck</u>	State <u>ND</u>	Zip code <u>58503</u>	Email

Name (Please print) <u>Howard Tweeten</u>		Title/Representing	
Address <u>9521 41st NE</u>			
City <u>BISMARCK</u>	State <u>ND</u>	Zip code <u>58503</u>	Email <u>tweeten@g.com</u>

Name (Please print) <u>ROX FOX</u>		Title/Representing	
Address <u>11501 41st NE</u>			
City <u>BISMA</u>	State <u>ND</u>	Zip code <u>58503</u>	Email

Name (Please print) <u>Corey Krebs</u>		Title/Representing	
Address <u>12570 34th St NW</u>			
City <u>Bismarck</u>	State <u>ND</u>	Zip code <u>58503</u>	Email



SIGN-IN SHEET

Bismarck-Mandan 
METROPOLITAN PLANNING ORGANIZATION

Meeting Location <u>Horizon School</u>	Meeting Type <u>Public Input Meeting</u>	Meeting Date <u>7-13-15</u>
Project Number	PCN	
Project Description <u>Burleigh County Land Use Study - PIM #1</u>		

Name (Please print) <u>Will Hutchings</u>		Title/Representing <u>MPO</u>	
Address			
City	State	Zip code	Email

Name (Please print) <u>Charlie & Lynette Dunbar</u>		Title/Representing <u>Self</u>	
Address <u>199 180th Ave NE</u>			
City <u>Baldwin</u>	State <u>ND</u>	Zip code <u>58521</u>	Email <u>-</u>

Name (Please print) <u>Doug Prchal</u>		Title/Representing <u>Citizen</u>	
Address <u>3605 Pebbleview Place</u>			
City <u>Bismarck</u>	State <u>ND</u>	Zip code <u>58503</u>	Email

Name (Please print) <u>Sheri Laves</u>		Title/Representing <u>FHWA</u>	
Address <u>4503 Coleman St</u>			
City <u>Bismarck</u>	State <u>ND</u>	Zip code <u>58503</u>	Email <u>sheri.laves@dot.gov</u>

Name (Please print) <u>Diane & Trace Klein</u>		Title/Representing	
Address <u>Box 91 - moving to 23250 Baldwin ND</u>			
City <u>Wilton</u>	State <u>ND</u>	Zip code <u>58577</u>	Email <u>fullcircle@bcktel.com</u>

Name (Please print) <u>Larry & Cheryl Storkert</u>		Title/Representing <u>Self</u>	
Address <u>2904 123rd Ave NW</u>			
City <u>Bis</u>	State <u>ND</u>	Zip code <u>58503</u>	Email <u>stkrtr@hotmail.com</u>

Name (Please print) <u>Brian Kitter</u>		Title/Representing <u>BWA</u>	
Address <u>400 E Broadway Ave</u>			
City <u>Bismarck</u>	State <u>ND</u>	Zip code <u>58501</u>	Email <u>bkitter@bwa.org</u>

SIGN-IN SHEET



Meeting Location <u>Horizon Middle School</u>	Meeting Type <u>Public Input Meeting</u>	Meeting Date <u>7-13-15</u>
Project Number	PCN	
Project Description <u>Burleigh County Land Use Study</u>		

Name (Please print) <u>Curt & Mary Simons</u>	Title/Representing <u>Resident</u>		
Address <u>19901 Hwy 1804</u>			
City <u>Baldwin</u>	State <u>ND</u>	Zip code <u>58521</u>	Email

Name (Please print) <u>Doris Falconer</u>	Title/Representing <u>Resident</u>		
Address <u>8301-12th St. SE</u>			
City <u>Bis</u>	State <u>ND</u>	Zip code <u>58504</u>	Email <u>df5364@gmail.com</u>

Name (Please print) <u>Keith Suchy</u>	Title/Representing		
Address <u>4750 Hwy 1806</u>			
City <u>Mandan</u>	State <u>ND</u>	Zip code <u>58554</u>	Email <u>suchy58554@gmail.com</u>

Name (Please print) <u>Pat Shindler</u>	Title/Representing		
Address <u>14101 15th St. NW</u>			
City <u>Bismarck</u>	State <u>ND</u>	Zip code <u>58503</u>	Email

Name (Please print) <u>Ashley Kaisershot</u>	Title/Representing <u>Resident</u>		
Address			
City	State	Zip code	Email

Name (Please print) <u>Rachel Drenlow</u>	Title/Representing <u>MPO</u>		
Address			
City	State	Zip code	Email

Name (Please print) <u>Dirig Schmidt</u>	Title/Representing <u>KLF</u>		
Address			
City	State	Zip code	Email



SIGN-IN SHEET



Meeting Location <u>Horizon Middle School</u>	Meeting Type <u>Public Input Meeting</u>	Meeting Date <u>7-13-15</u>
Project Number	RCN	
Project Description <u>Burleigh County Land Use Study -</u>		

Name (Please print) <u>MARVIN PAMELA SCHNEET</u>		Title/Representing <u>Resident</u>	
Address <u>825 N 1ST STREET</u>			
City <u>Bismarck</u>	State <u>ND</u>	Zip code <u>58501</u>	Email

Name (Please print) <u>DAN FALCONE</u>		Title/Representing <u>#</u>	
Address <u>424 N 14th ST</u>			
City <u>BISMARCK</u>	State <u>ND</u>	Zip code <u>58501</u>	Email <u>dan.falcone@gmail.com</u>

Name (Please print) <u>Lee Grewel</u>		Title/Representing <u>KLJ</u>	
Address <u>616 Meadow Ln</u>			
City <u>Bismarck</u>	State <u>ND</u>	Zip code <u>58504</u>	Email

Name (Please print) <u>MICHAEL JOHNSON</u>		Title/Representing <u>ND DOT-LG</u>	
Address			
City	State	Zip code	Email

Name (Please print) <u>Steven Wahler</u>		Title/Representing	
Address			
City	State	Zip code	Email

Name (Please print) <u>Denise Andahl</u>		Title/Representing <u>self</u>	
Address <u>13401 15 St NW</u>			
City <u>Bismarck</u>	State <u>ND</u>	Zip code <u>58503</u>	Email <u>denise@bektel.com</u>

Name (Please print)		Title/Representing	
Address			
City	State	Zip code	Email

Attachment 3-13 – July Sign In Sheets (Naughton Elementary School)

SIGN-IN SHEET

Page 1 of 4
(Rev. 03-2012)



Meeting Location <u>Naughton School</u>	Meeting Type <u>Public Input Meeting</u>	Meeting Date <u>7-14-15</u>
Project Number	PCN	
Project Description <u>Burling County Land Use Study - PTM # 1</u>		

Name (Please print) <u>Rachel Drewlow</u>		Title/Representing <u>MPC</u>	
Address			
City	State	Zip code	Email <u>rdrewlow@bismarcknd.gov</u>

Name (Please print) <u>O'Neil Peppy Kaur</u>		Title/Representing <u>Resident</u>	
Address <u>18071 52nd St NE</u>			
City <u>Baldwin</u>	State <u>ND</u>	Zip code <u>58521</u>	Email <u>opkaur@yahoo.com</u>

Name (Please print) <u>Dwight Bentler</u>		Title/Representing <u>Wrighton Township Pres.</u>	
Address <u>800 197th Avenue</u>			
City <u>Bismarck</u>	State <u>ND</u>	Zip code <u>58503-6629</u>	Email

Name (Please print) <u>Mike Fried</u>		Title/Representing	
Address <u>12417 93rd St NE</u>			
City <u>Bis</u>	State <u>ND</u>	Zip code <u>58503</u>	Email

Name (Please print) <u>Justin Mya Mayer</u>		Title/Representing	
Address <u>2553 Vancouver Ln</u>			
City <u>Bismarck</u>	State <u>ND</u>	Zip code <u>58503</u>	Email

Name (Please print) <u>Beth Jones</u>		Title/Representing	
Address <u>18460 Hwy 1804</u>			
City <u>Baldwin</u>	State <u>ND</u>	Zip code <u>58521</u>	Email <u>bjones@bektel</u>

Name (Please print) <u>Les Larson</u>		Title/Representing	
Address <u>8200 60th St NE</u>			
City <u>Bismarck</u>	State <u>ND</u>	Zip code <u>58503</u>	Email <u>llarson@bektel.com</u>



SIGN-IN SHEET

Bismarck-Mandan
METROPOLITAN PLANNING ORGANIZATION

Meeting Location <i>Naughton School</i>	Meeting Type <i>Public Input Meeting</i>	Meeting Date <i>7-14-15</i>
Project Number	PCN	
Project Description <i>Burleigh County Land Use study - DIM # 1</i>		

Name (Please print) <i>Lime Barb Beaty</i>		Title/Representing	
Address <i>14951 66th ST. NE</i>			
City <i>Baldwin</i>	State <i>ND</i>	Zip code <i>58521</i>	Email

Name (Please print) <i>WAYNE & KIM MARTHINSON</i>		Title/Representing	
Address <i>7251 17th AV NE</i>			
City <i>Dix</i>	State	Zip code <i>58503</i>	Email

Name (Please print) <i>Karmen Pfeiffer Sorenson</i>		Title/Representing	
Address <i>4700 162nd Ave NE</i>			
City <i>Baldwin,</i>	State <i>ND</i>	Zip code	Email <i>ke.sorenson@co.com</i>

Name (Please print) <i>Lloyd Jones</i>		Title/Representing <i>self</i>	
Address <i>18460 Hwy 1804</i>			
City <i>Baldwin</i>	State <i>ND</i>	Zip code <i>58521</i>	Email

Name (Please print) <i>Peter GUNSCH</i>		Title/Representing	
Address <i>13461 80th st NE</i>			
City <i>Bismarck</i>	State <i>ND</i>	Zip code <i>58503</i>	Email

Name (Please print) <i>DAVID BOONE</i>		Title/Representing	
Address <i>15850 93rd ST NE</i>			
City <i>BALDWIN</i>	State <i>ND</i>	Zip code <i>58521</i>	Email

Name (Please print) <i>John Wohl</i>		Title/Representing	
Address <i>14045 66th St. NE</i>			
City <i>BALDWIN</i>	State <i>ND</i>	Zip code <i>58521</i>	Email <i>jj Wohl@yahoo.com</i>

SIGN-IN SHEET



Meeting Location <i>Naughton</i>	Meeting Type	Meeting Date
Project Number	PCN	
Project Description		

Name (Please print) <i>Cindy Larson</i>		Title/Representing	
Address <i>8200 80th ST NE</i>			
City <i>Bismarck</i>	State <i>ND</i>	Zip code <i>58503</i>	Email <i>clcarabians@yahoo.com</i>

Name (Please print) <i>Gerry Decker</i>		Title/Representing	
Address <i>14600 26th ST NE</i>			
City <i>Bismarck</i>	State <i>ND</i>	Zip code <i>58521</i>	Email <i>gerry@bektel.com</i>

Name (Please print) <i>John Warford</i>		Title/Representing	
Address <i>800 PROSPECT POINT</i>			
City <i>Bismarck</i>	State <i>ND</i>	Zip code <i>58504</i>	Email <i>JOHNSRCWARFORD@DOTHU.COM</i>

Name (Please print) <i>John Warford</i>		Title/Representing	
Address <i>11851 93rd ST NE</i>			
City <i>Bismarck</i>	State <i>ND</i>	Zip code <i>58505</i>	Email

Name (Please print) <i>Michael Heilman</i>		Title/Representing <i>Burleigh County Schools</i>	
Address <i>3144 Hampton St.</i>			
City <i>Bismarck</i>	State <i>ND</i>	Zip code <i>58504</i>	Email <i>mikeheilman1190@gmail.com</i>

Name (Please print) <i>John Solberg</i>		Title/Representing <i>Self</i>	
Address <i>3356 Kent Dr</i>			
City <i>BIS</i>	State	Zip code <i>58503</i>	Email

Name (Please print) <i>Eric Bailey</i>		Title/Representing <i>Naughton Township & Self</i>	
Address <i>7500 123 Ave NE</i>			
City <i>Bismarck</i>	State <i>ND</i>	Zip code <i>58503</i>	Email



SIGN-IN SHEET

Bismarck-Mandan 
METROPOLITAN PLANNING ORGANIZATION

Meeting Location	Meeting Type	Meeting Date
Project Number		PCN
Project Description		

Name (Please print) <i>LINDA BUCHMANN</i>		Title/Representing	
Address <i>5951 162nd AVE NE</i>			
City <i>BALDWIN</i>	State <i>ND</i>	Zip code <i>58521</i>	Email <i>LINDA.B@BEKTEL.COM</i>

Name (Please print)		Title/Representing	
Address			
City	State	Zip code	Email

Name (Please print)		Title/Representing	
Address			
City	State	Zip code	Email

Name (Please print)		Title/Representing	
Address			
City	State	Zip code	Email

Name (Please print)		Title/Representing	
Address			
City	State	Zip code	Email

Name (Please print)		Title/Representing	
Address			
City	State	Zip code	Email

Name (Please print)		Title/Representing	
Address			
City	State	Zip code	Email

Attachment 3-14 – July Sign In Sheets (Menoken Elementary School)

SIGN-IN SHEET



Meeting Location <i>Menoken Elementary School</i>	Meeting Type <i>Public Input Meeting</i>	Meeting Date <i>7-16-15</i>
Project Number	PCN	
Project Description <i>Burleigh County Land Use Study - PIM #1</i>		

Name (Please print) <i>Marlys Frandsen</i>		Title/Representing	
Address <i>304 E Turnpike</i>			
City <i>Bismarck</i>	State <i>ND</i>	Zip code <i>58501</i>	Email

Name (Please print) <i>Tom Ritten</i>		Title/Representing <i>Chairman/Burleigh County Township Association</i>	
Address <i>19500 62nd Ave SE</i>			
City <i>Menoken</i>	State <i>ND</i>	Zip code <i>58558</i>	Email

Name (Please print) <i>FRANCIS + CAROL MAHER</i>		Title/Representing <i>Land Owner</i>	
Address <i>17750-30th Ave NE</i>			
City <i>Menoken</i>	State <i>ND</i>	Zip code <i>58558</i>	Email

Name (Please print) <i>JAN MILLER</i>		Title/Representing	
Address <i>1315 N 3RD ST</i>			
City <i>BISMARCK</i>	State <i>ND</i>	Zip code <i>58501</i>	Email

Name (Please print) <i>Donna Fricke</i>		Title/Representing	
Address <i>918 Senate Dr</i>			
City <i>BIS</i>	State <i>ND</i>	Zip code <i>58501</i>	Email

Name (Please print) <i>Ray Zinger</i>		Title/Representing	
Address <i>PO box 1212</i>			
City <i>Bismarck</i>	State	Zip code	Email

Name (Please print) <i>Neal Niemath</i>		Title/Representing <i>ME</i>	
Address <i>10889 71st Ave NE</i>			
City <i>Bismarck</i>	State <i>ND</i>	Zip code <i>58503</i>	Email



SIGN-IN SHEET

Bismarck-Mandan
METROPOLITAN PLANNING ORGANIZATION

Meeting Location	Menoken Elementary School	Meeting Type	Public Input Meeting	Meeting Date	7-16-15
Project Number		PCN			
Project Description	Burleigh County Land Use Study - PIM #1				

Name (Please print)	Pete + Helen Ebach			Title/Representing	
Address	19800 30 th ave N.E.				
City	Mandan	State	ND	Zip code	58558
Email					

Name (Please print)	Wilmer J. Pich			Title/Representing	
Address	1240 ZUZASS DRIVE				
City	MENOKEN	State	ND	Zip code	58558
Email	Pich@bektel.com				

Name (Please print)	Patty Mattson			Title/Representing	Realtor
Address	5850 158 th St NE				
City	Menoken	State	ND	Zip code	58558
Email	patty.mattson@hotmail.com				

Name (Please print)	Raymond Wold			Title/Representing	
Address	4451 201 Ave NE				
City	Baldwin	State	ND	Zip code	58521
Email					

Name (Please print)	Ron Kershaw			Title/Representing	
Address	16 Front Ave E				
City	Menoken	State	ND	Zip code	58558
Email	ron.kershaw@bektel.com				

Name (Please print)	Madeline Selbernagel			Title/Representing	
Address	1117 N 3 rd				
City	Bis	State	ND	Zip code	58501
Email	o				

Name (Please print)	Jerry Saude			Title/Representing	Self
Address	1919 162 nd Ave NW				
City	Bismarck	State	ND	Zip code	58503
Email	grammas@bektel.com				

SIGN-IN SHEET



Meeting Location	Menoken Elementary School	Meeting Type	Public Input Meeting	Meeting Date	7-16-15
Project Number	PCN				
Project Description	Burdigh County Land Use Study - PIM #1				

Name (Please print)		Title/Representing			
Aaron + Kristi Vetter					
Address					
2248 171 st NE					
City	State	Zip code	Email		
Menoken	ND	58558	kdmv2002@yahoo.com		

Name (Please print)		Title/Representing			
Address					
City	State	Zip code	Email		

Name (Please print)		Title/Representing			
Address					
City	State	Zip code	Email		

Name (Please print)		Title/Representing			
Address					
City	State	Zip code	Email		

Name (Please print)		Title/Representing			
Address					
City	State	Zip code	Email		

Name (Please print)		Title/Representing			
Address					
City	State	Zip code	Email		

Name (Please print)		Title/Representing			
Address					
City	State	Zip code	Email		



AGENDA



6:00 Open House
Exhibits
Team Availability

6:30 Presentation
Community Snapshot
Community Issues Polling
Discussion

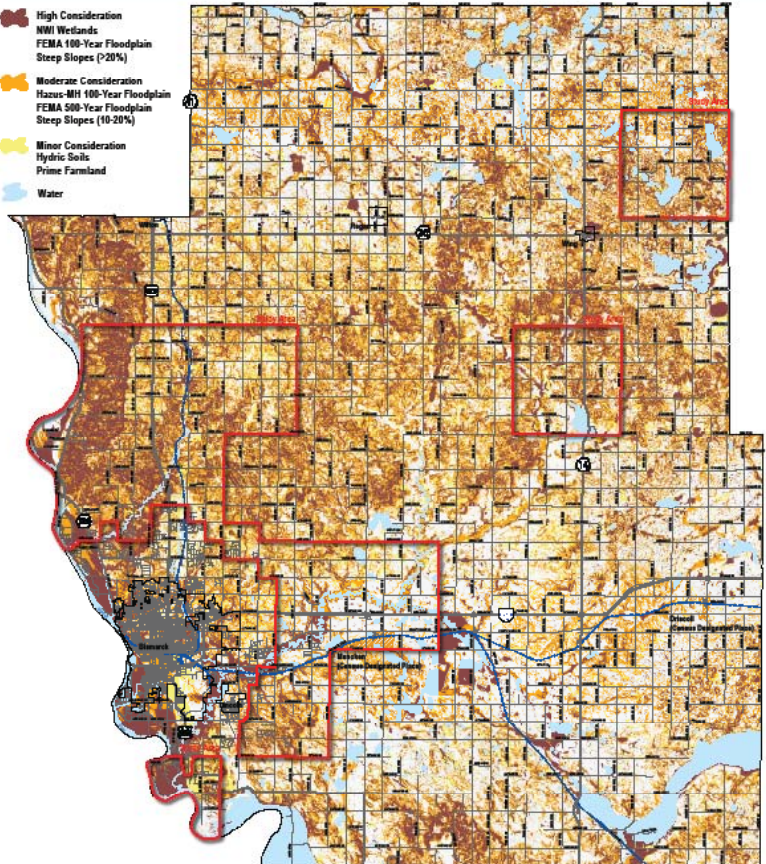
7:15 Team Availability

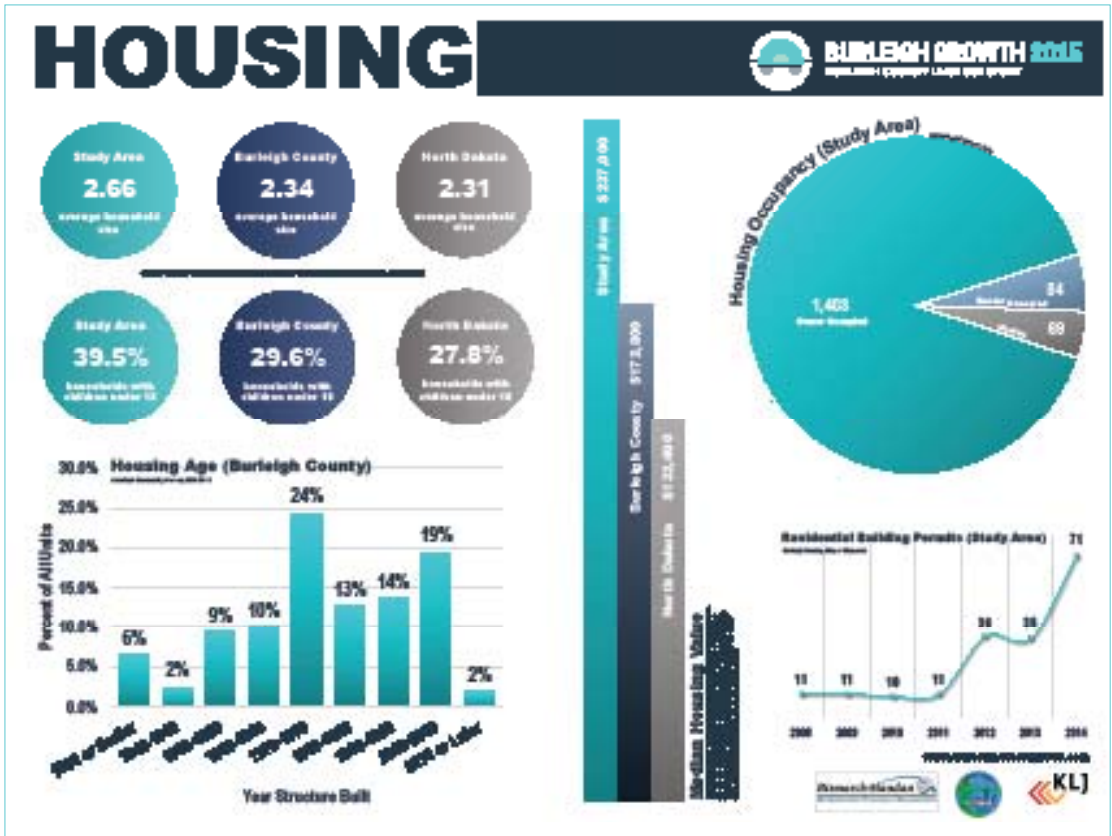
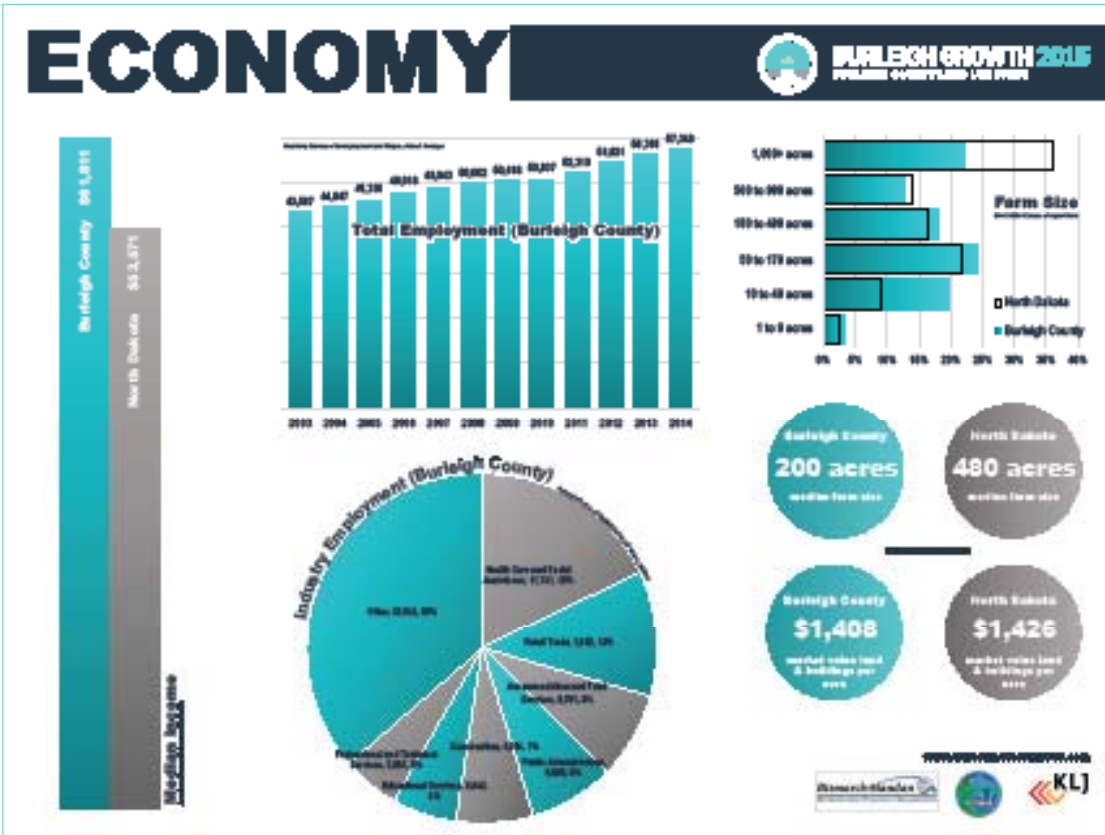


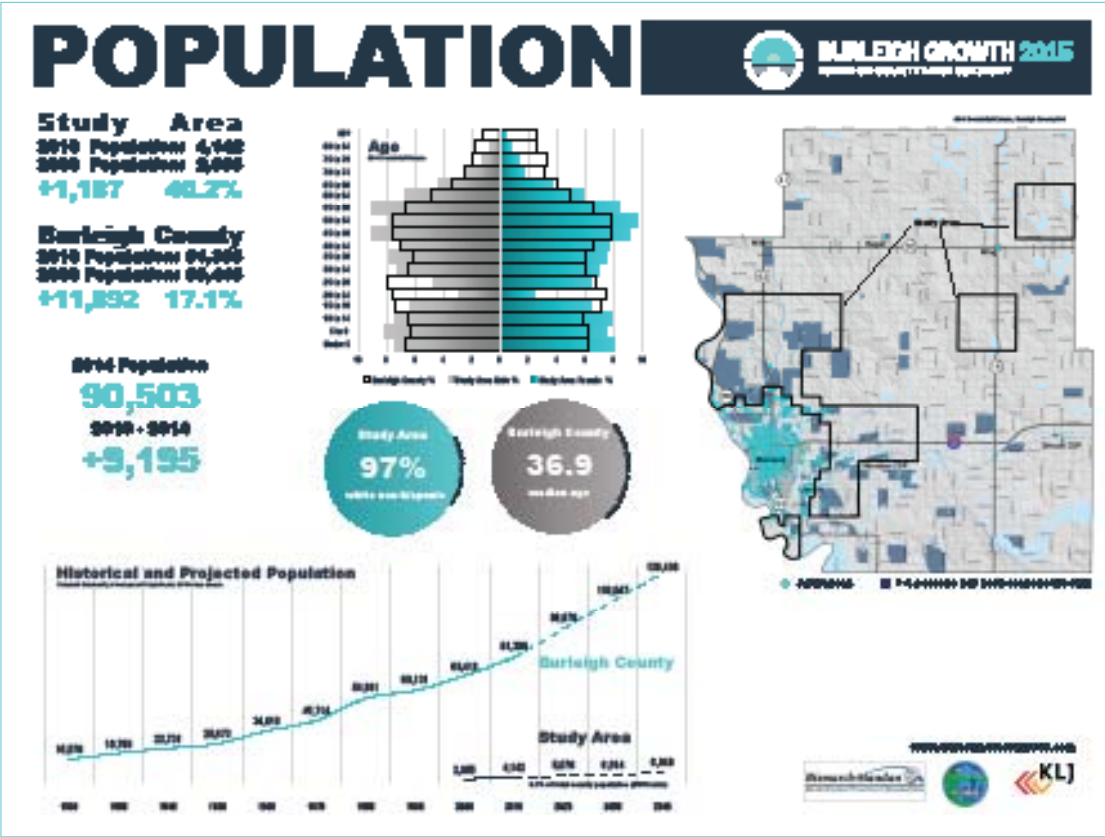
CONSTRAINTS



-  High Consideration
-  NWI Wetlands
-  FEMA 100-Year Floodplain
-  Steep Slopes (>20%)
-  Moderate Consideration
-  Hazus-MH 100-Year Floodplain
-  FEMA 500-Year Floodplain
-  Steep Slopes (10-20%)
-  Minor Consideration
-  Hydric Soils
-  Prime Farmland
-  Water

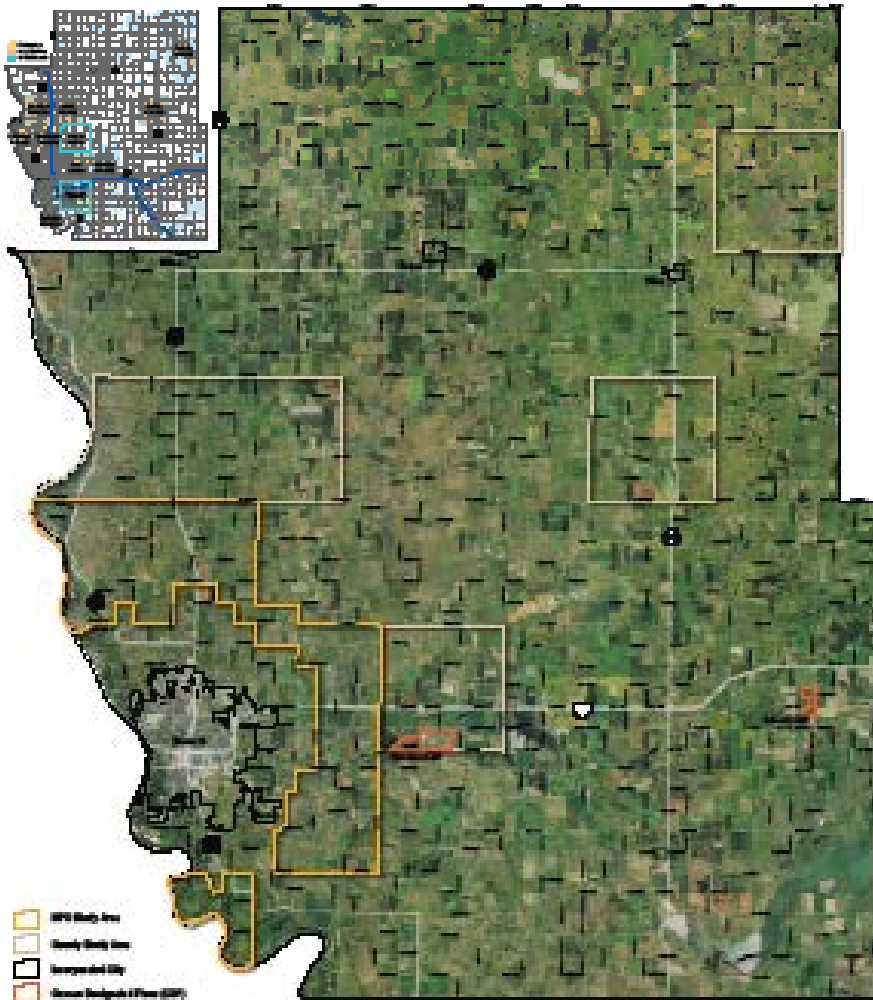






STUDY AREA

WILSON COUNTY
COMMUNITY GROWTH 2016
LAND USE PLAN AND MAP



- WPA Study Area
- County Study Area
- Incorporated City
- Recent Proposals (Flow 2016)







Attachment 3-16 – July PowerPoint Presentation

Burleigh County Land Use Study

Menoken Elementary School July 16, 2015





www.BurleighGrowth2015.com


Study Area

Bismarck-Mandan Metropolitan Planning Organization
112 square miles


183 square miles


Introductions




Rachel Drewlow
Bismarck-Mandan
Metropolitan Planning Agency




Carron Day AICP



Ray Ziegler
Burleigh County



Andrew Thierolf AICP



Darcy Schmidt





www.BurleighGrowth2015.com



Study Area

Bismarck-Mandan Metropolitan Planning Organization
112 square miles

183 square miles







Agenda

- Land Use Study
 - Study Area
 - Study Focus and Process
 - How Will the Study Be Used?
- Community Snapshot
- Community Issues Polling
- Participants' Discussion
- What's Next




www.BurleighGrowth2015.com




Burleigh County Land Use Study

- Address higher level of growth than projected in previous planning efforts
- Study existing conditions
- Consider future land use alternatives and their impacts
- Focus long-range - 20 years



www.BurleighGrowth2015.com



Looking Back 20 Years

Denver International Airport
eBay went live
Toy Story opened
O.J. Simpson trial
Bill Clinton was president

Burleigh County population
1995 - 65,585
2014 estimate - 90,503

1995 1997 1999 2001 2003 2005 2007 2009 2011 2013

BURLEIGH GROWTH 2015
BURLEIGH COUNTY LAND USE DEPT.

Will Not:

- Change the zoning of any property
- Zoning changes will only happen if a property owner requests a change the existing zoning designation

BURLEIGH GROWTH 2015
BURLEIGH COUNTY LAND USE DEPT.

Burleigh County Comprehensive Plan

GOVERNMENT Objective #3
Emphasize a sound planning process as a means of managing future county growth in the most rational, efficient manner possible

Policy #2 Adopt a . . . Land Use Plan to guide the future growth within Burleigh County

Burleigh County Comprehensive Plan, 2014

BURLEIGH GROWTH 2015
BURLEIGH COUNTY LAND USE DEPT.

Land Use Study Process

BURLEIGH GROWTH 2015
BURLEIGH COUNTY LAND USE DEPT.

How Will the Study Be Used?

- Serve as the guide for future development
- Goals, objectives and policies will address future infrastructure and community facilities' needs
- Future land use map will reflect adopted policies

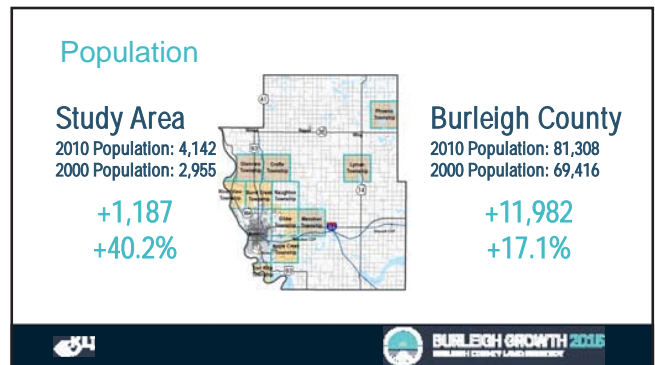
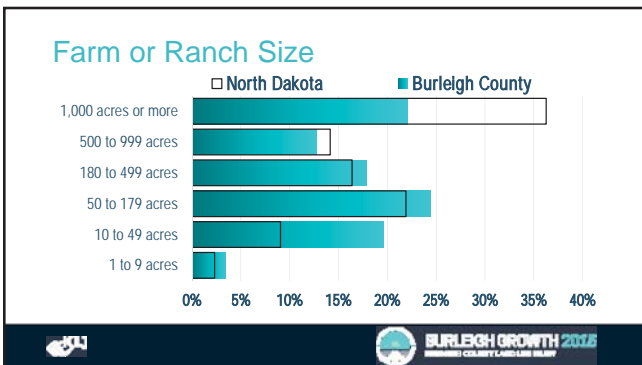
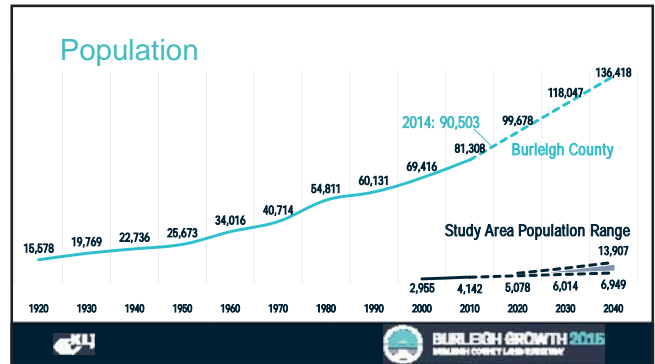
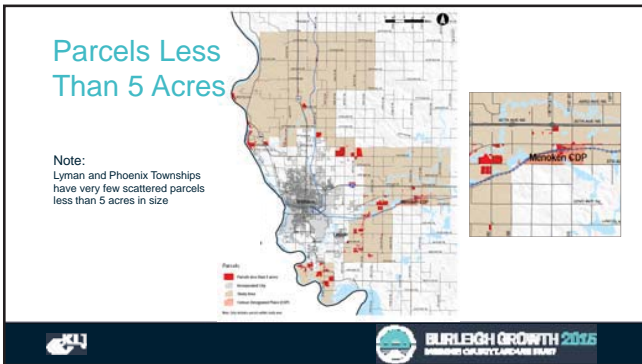
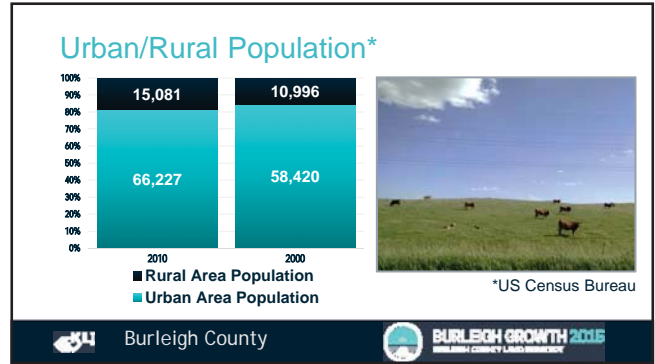
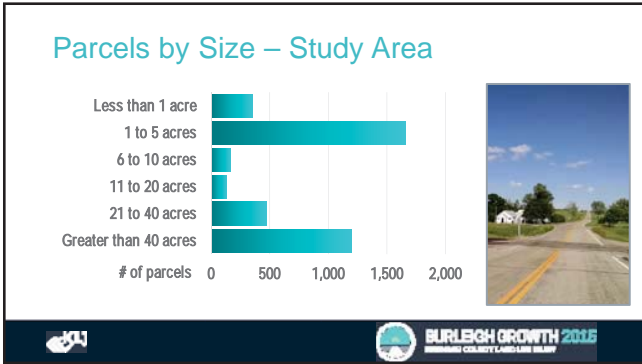
BURLEIGH GROWTH 2015
BURLEIGH COUNTY LAND USE DEPT.

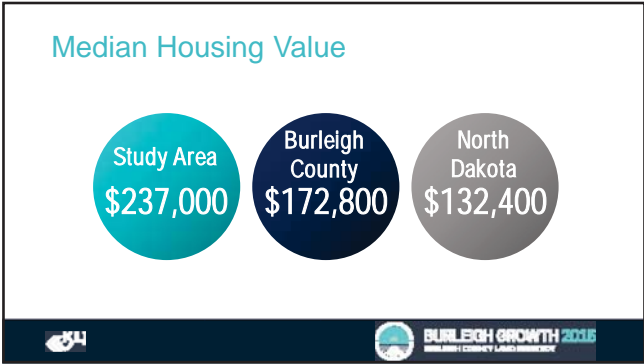
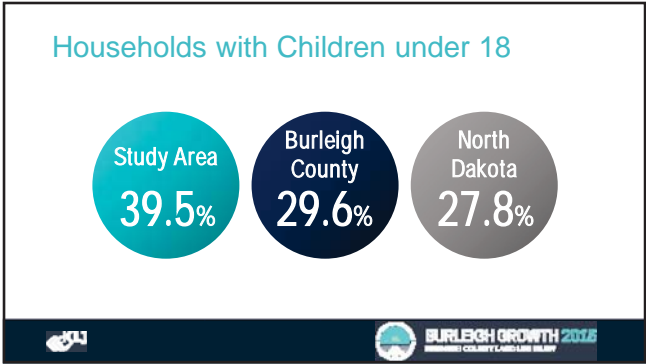
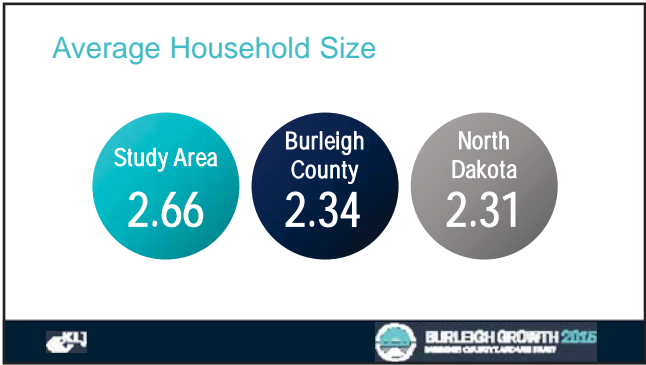
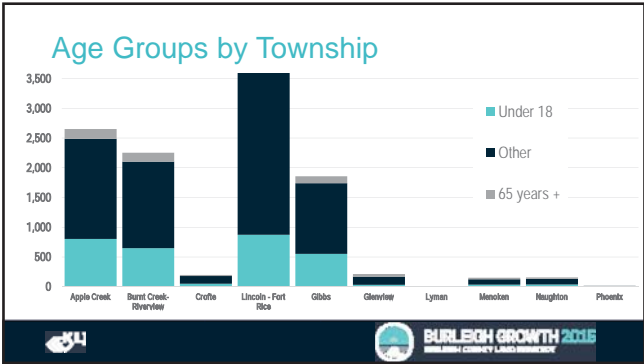
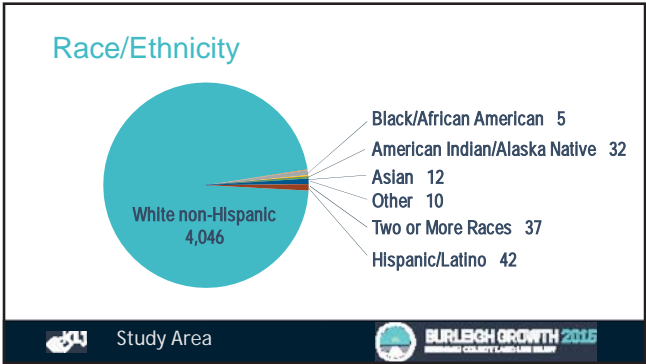
Community Snapshot

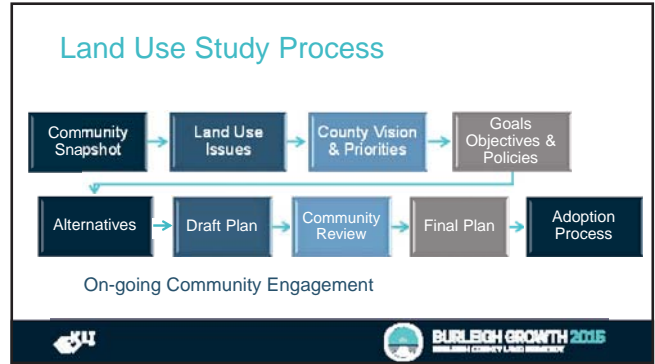
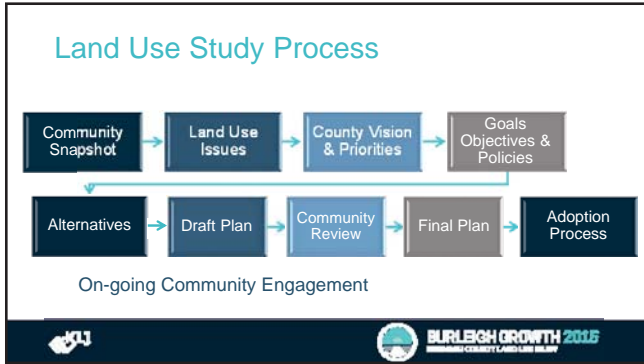
Burleigh County and Study Area

www.BurleighGrowth2015.com

BURLEIGH GROWTH 2015
BURLEIGH COUNTY LAND USE DEPT.







Thank you for coming tonight.

www.BurleighGrowth2015.com

BURLEIGH GROWTH 2015
BURLEIGH COUNTY LAND USE STUDY

July Open House Workshops
6:00 to 7:30 p.m.

Monday, July 13, 2015
Horton Middle School
500 Ash Coulee Dr
Bismarck, ND 58503

Tuesday, July 14, 2015
Naughton Elementary School
9101 123rd Ave NE
Bismarck, ND 58503

Thursday, July 16, 2015
Menoken Elementary School
412 Bismarck St N
Menoken, ND 58558

Thursday, July 23, 2015
Apple Creek Elementary School
2000 Grand St SE
Bismarck, ND 585

The timeline shows the following milestones: May 2015 (Inventory and Analysis), June (Vision & Guiding Principles, Plan & Policy Framework), July (Monthly Project Updates, Open House Workshops, Public Survey), August (Implementation Strategies), September (Draft Plan), October (Open House Workshops, Review & Adoption), November (Public Draft Review), December (Final Plan), and January 2016 (Final Plan).

BURLEIGH GROWTH 2015
BURLEIGH COUNTY LAND USE STUDY

What's Next?

Watch project website updates

www.BurleighGrowth2015.com

BURLEIGH GROWTH 2015
BURLEIGH COUNTY LAND USE STUDY

Take our survey

We want to hear from YOU!

YOUR IDEAS...
YOUR SUGGESTIONS...
YOUR COMMENTS...
YOUR CONCERNS ARE IMPORTANT TO US!

www.BurleighGrowth2015.com


BURLEIGH GROWTH 2015
BURLEIGH COUNTY LAND USE STUDY

Project team is available to answer any questions.

www.BurleighGrowth2015.com




Burleigh County Land Use Study



Menoken Elementary School July 16, 2015

www.BurleighGrowth2015.com





Attachment 3-17 – July Meeting Photographs

Horizon Middle School

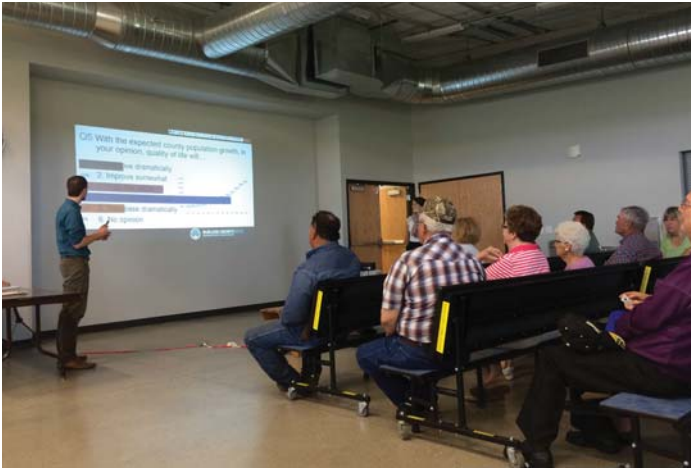


Naughton Elementary School





Menoken Elementary School



Apple Creek Elementary

