

ABERLE PARK

PART OF THE NORTHEAST 1/4 OF SECTION 29, T. 139 N., R. 78 W. BURLEIGH COUNTY, NORTH DAKOTA

DESCRIPTION

ALL THAT PART OF THE NORTHEAST 1/4 SECTION 29 TOWNSHIP 139 NORTH RANGE 78 WEST OF THE 5TH PRINCIPAL MERIDIAN, BURLEIGH COUNTY, NORTH DAKOTA DESCRIBED AS FOLLOWS:
BEGINNING ON THE EAST LINE OF SECTION 29, A DISTANCE OF 1140.26 FEET SOUTH OF THE NORTHEAST SECTION CORNER; THENCE SOUTH 89 DEGREES 51 MINUTES 07 SECONDS WEST, ALONG THE SOUTH LINE OF INTERSTATE HIGHWAY NUMBER 94 (I-94), A DISTANCE OF 99.52 FEET; THENCE NORTH 0 DEGREES 12 MINUTES 03 SECONDS WEST, CONTINUING ALONG SAID I-94 RIGHT-OF-WAY LINE, A DISTANCE OF 374.79 FEET; THENCE NORTH 63 DEGREES 30 MINUTES 35 SECONDS WEST, CONTINUING ALONG SAID SOUTH LINE OF I-94, A DISTANCE OF 635.26 FEET; THENCE NORTH 82 DEGREES 33 MINUTES 03 SECONDS WEST, CONTINUING ALONG SAID SOUTH LINE OF I-94, A DISTANCE OF 302.79 FEET; THENCE SOUTH 89 DEGREES 49 MINUTES 38 SECONDS WEST, CONTINUING ALONG SAID SOUTH LINE OF I-94, A DISTANCE OF 882.17 FEET; THENCE SOUTH 0 DEGREES 08 MINUTES 53 SECONDS EAST A DISTANCE OF 1089.87 FEET; THENCE NORTH 89 DEGREES 51 MINUTES 07 SECONDS EAST A DISTANCE OF 1850.00 FEET TO THE EAST LINE OF SECTION 29; THENCE NORTH 0 DEGREES 08 MINUTES 53 SECONDS WEST, ALONG SAID EAST SECTION LINE, A DISTANCE OF 390.62 FEET TO THE POINT OF BEGINNING.
THE ABOVE DESCRIBED TRACT OF LAND CONTAINS 42.18 ACRES, MORE OR LESS.

SECTION LINE

NORTHEAST CORNER
SECTION 29, T. 139 N., R. 78 W.

APPROVAL OF COUNTY PLANNING COMMISSION

THE SUBDIVISION OF LAND AS SHOWN ON THE ANNEXED PLAT HAS BEEN APPROVED BY THE PLANNING COMMISSION OF BURLEIGH COUNTY, ON THE 27th DAY OF May, 1998, IN ACCORDANCE WITH THE LAWS OF THE STATE OF NORTH DAKOTA, ORDINANCES OF BURLEIGH COUNTY AND REGULATIONS ADOPTED BY THE SAID PLANNING COMMISSION. IN WITNESS WHEREOF ARE SET THE HANDS AND SEALS OF THE CHAIRMAN AND SECRETARY OF THE PLANNING COMMISSION OF BURLEIGH COUNTY.

Greg Schider
GREG SCHIDER - CHAIRMAN

Kevin Glatt
KEVIN GLATT - SECRETARY

INTERSTATE HIGHWAY 94

APPROVAL OF BOARD OF COUNTY COMMISSIONERS

THE BOARD OF COUNTY COMMISSIONERS OF BURLEIGH COUNTY, NORTH DAKOTA, HAS APPROVED THE SUB-DIVISION OF LAND AS SHOWN ON THE ANNEXED PLAT, HAS ACCEPTED THE DEDICATION OF ALL STREETS SHOWN THEREON, HAS APPROVED THE GROUNDS AS SHOWN ON THE ANNEXED PLAT AS AN AMENDMENT TO THE MASTER PLAN OF BURLEIGH COUNTY, NORTH DAKOTA, AND DOES HEREBY VACATE ANY PREVIOUS PLATTING WITHIN THE BOUNDARY OF THE ANNEXED PLAT.
THE FOREGOING ACTION OF THE BOARD OF COUNTY COMMISSIONERS OF BURLEIGH COUNTY, NORTH DAKOTA, WAS TAKEN BY RESOLUTION APPROVED THE 6th DAY OF July, 1998.

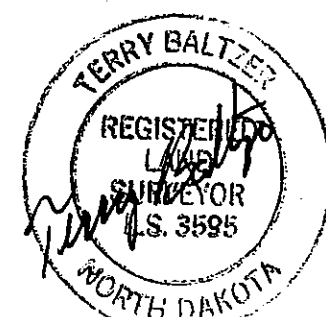
Claus Lembke
CLAUS LEMBKE - CHAIRMAN

Kevin Glatt
KEVIN GLATT - COUNTY AUDITOR

SURVEYOR'S CERTIFICATE

I, TERRY BALTZER, A REGISTERED LAND SURVEYOR IN THE STATE OF NORTH DAKOTA, HEREBY CERTIFY THAT THE ANNEXED PLAT IS A TRUE COPY OF THE NOTES OF A SURVEY PERFORMED UNDER MY SUPERVISION AND COMPLETED ON August 27, 1998, AND THAT ALL INFORMATION SHOWN HEREON IS TRUE AND CORRECT TO THE BEST OF MY KNOWLEDGE AND BELIEF.

Terry Baltzer
TERRY BALTZER
REGISTERED LAND SURVEYOR
N.D. REGISTRATION NO. 3595



STATE OF NORTH DAKOTA }
COUNTY OF BURLEIGH } SS

ON THIS 10th DAY OF December, 1998, BEFORE ME PERSONALLY APPEARED TERRY BALTZER, KNOWN TO ME TO BE THE PERSON DESCRIBED IN AND WHO EXECUTED THE FOREGOING SURVEYOR'S CERTIFICATE AND HE ACKNOWLEDGED TO ME THAT HE EXECUTED THE SAME.

DAVID PATIENCE
Notary Public, STATE OF NORTH DAKOTA
My Commission Expires AUGUST 24, 2004

David Patience
DAVID PATIENCE, NOTARY PUBLIC
BURLEIGH COUNTY, NORTH DAKOTA
MY COMMISSION EXPIRES

APPROVAL OF COUNTY ENGINEER

I, JON MILL, COUNTY ENGINEER OF THE COUNTY OF BURLEIGH, NORTH DAKOTA, HEREBY APPROVE "ABERLE PARK" BURLEIGH COUNTY, NORTH DAKOTA AS SHOWN ON THE ANNEXED PLAT.

Jon Mill 19 Oct 98
JON MILL
COUNTY ENGINEER

OWNER'S CERTIFICATE & DEDICATION

KNOW ALL MEN BY THESE PRESENTS THAT ROBERT ABERLE AND JANICE ABERLE BEING THE OWNERS AND PROPRIETORS OF THE PROPERTY SHOWN ON THE ANNEXED PLAT HAVE CAUSED THAT PORTION DESCRIBED HEREON TO BE SURVEYED AND PLATTED AS "ABERLE PARK" BURLEIGH COUNTY, NORTH DAKOTA AND DO HEREBY DEDICATE STREETS AS SHOWN HEREON.

THEY ALSO DEDICATE EASEMENTS TO RUN WITH THE LAND, FOR GAS, ELECTRIC, TELEPHONE OR OTHER PUBLIC UTILITIES OR SERVICES ON OR UNDER THOSE CERTAIN STRIPS OF LAND DESIGNATED HEREON AS "UTILITY EASEMENTS".

Robert Aberle
ROBERT ABERLE

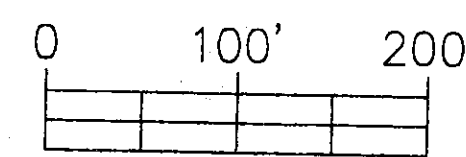
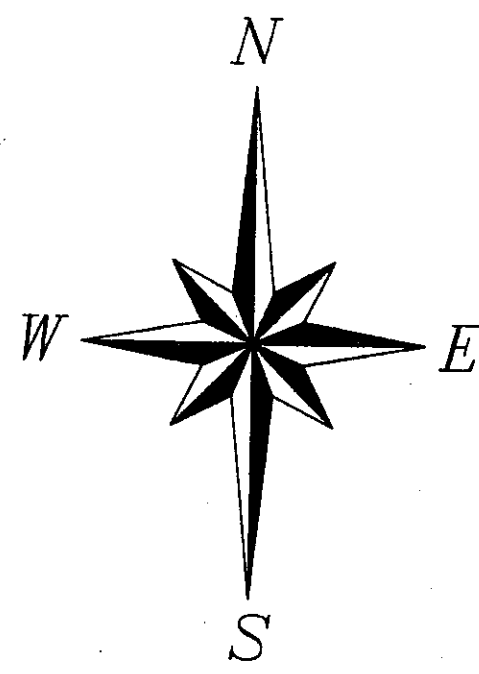
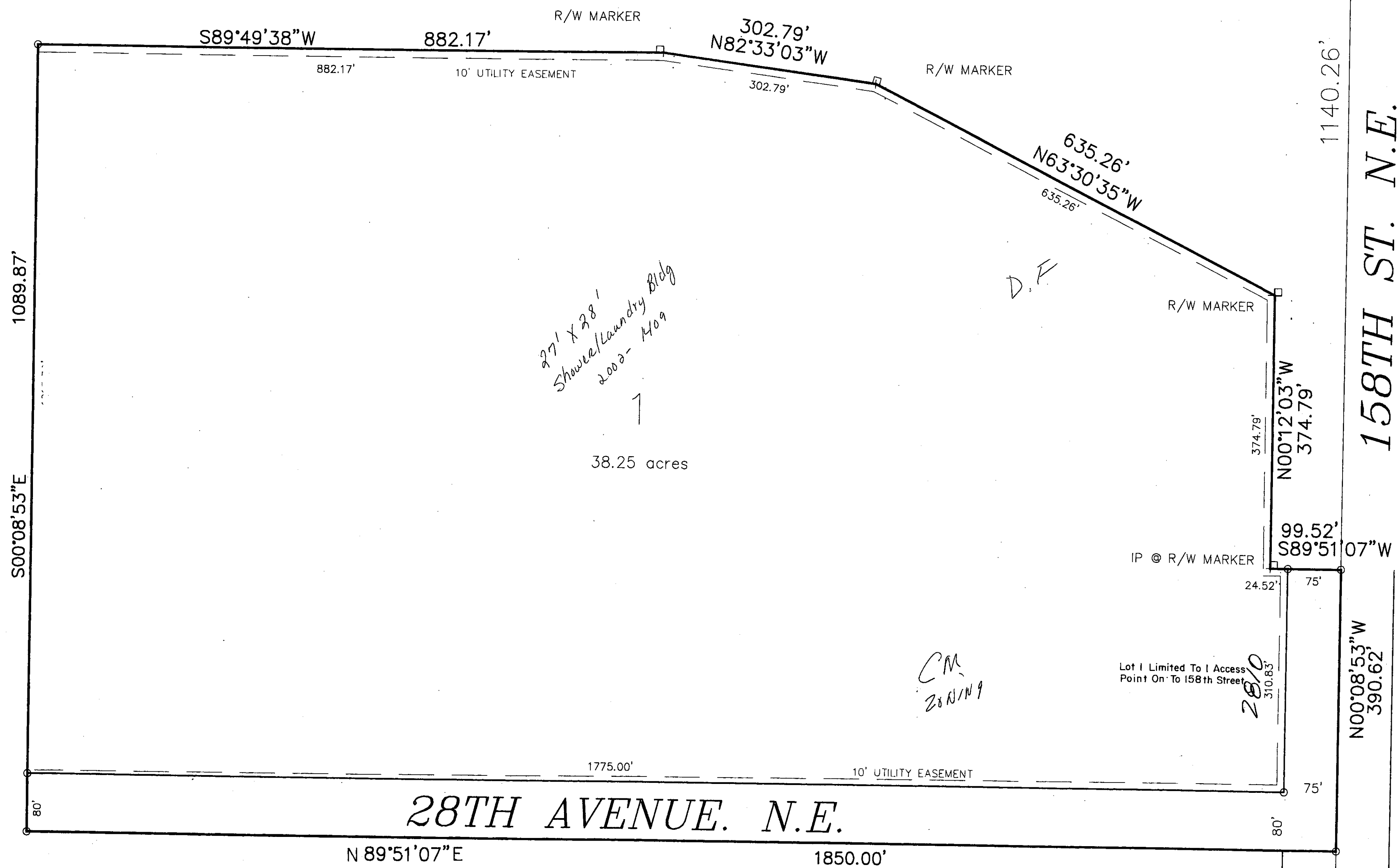
Janice Aberle
JANICE ABERLE

ON THIS 10th DAY OF October, 1998, BEFORE ME PERSONALLY APPEARED ROBERT ABERLE AND JANICE ABERLE KNOWN TO ME TO BE THE PERSONS DESCRIBED IN AND WHOSE NAMES ARE SUBSCRIBED TO THE ABOVE INSTRUMENT AND ACKNOWLEDGE THEY EXECUTED THE SAME.

DAVID PATIENCE
Notary Public, STATE OF NORTH DAKOTA
My Commission Expires AUGUST 24, 2004

David Patience
DAVID PATIENCE, NOTARY PUBLIC
BURLEIGH COUNTY, NORTH DAKOTA
MY COMMISSION EXPIRES

Taxes and special assessments paid and TRANSFER accepted this 20 day of October, 1998.
Kevin Glatt
Burleigh County Auditor
By *Greg Schider*
Deputy, Burleigh County Auditor



SCALE: 1" = 100'
MAY 28, 1998

38.25 ACRES - LOT
3.93 ACRES - RIGHT-OF-WAY
42.18 ACRES - TOTAL

Aberle Park
County
Plat Number 1

SWENSON, HAGEN & CO. P.C.
PLANNING CIVIL ENGINEERING SURVEYING
SITE DESIGN CONSTRUCTION MANAGEMENT
808 MAIN AVE. P.O. BOX 1136
BISMARCK, ND 58504 (701) 223-2800
FAX (701) 223-2800