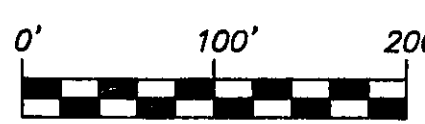
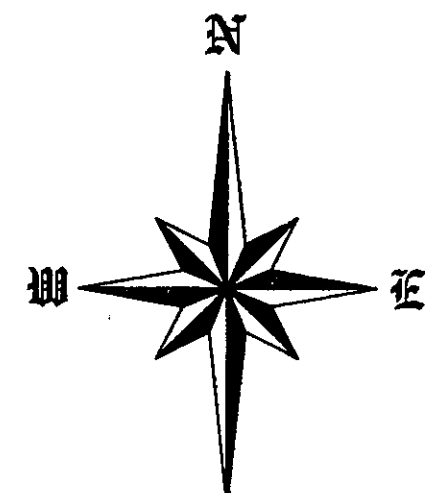


COUNTRY CREEK SECOND SUBDIVISION

PART OF GOVERNMENT LOTS 6 & 7, PART OF THE EAST 1/2 OF THE
THE SOUTHWEST 1/4 AND PART OF THE SOUTH 400 FEET OF THE
SOUTHEAST 1/4 OF THE NORTHWEST 1/4
SECTION 6, TOWNSHIP 139 NORTH, RANGE 79 WEST
BURLEIGH COUNTY, NORTH DAKOTA

GOVERNMENT LOT 5

SE 1/4 NW 1/4



SCALE 1" = 100'
DECEMBER 16, 2004
PAGE 1 OF 2

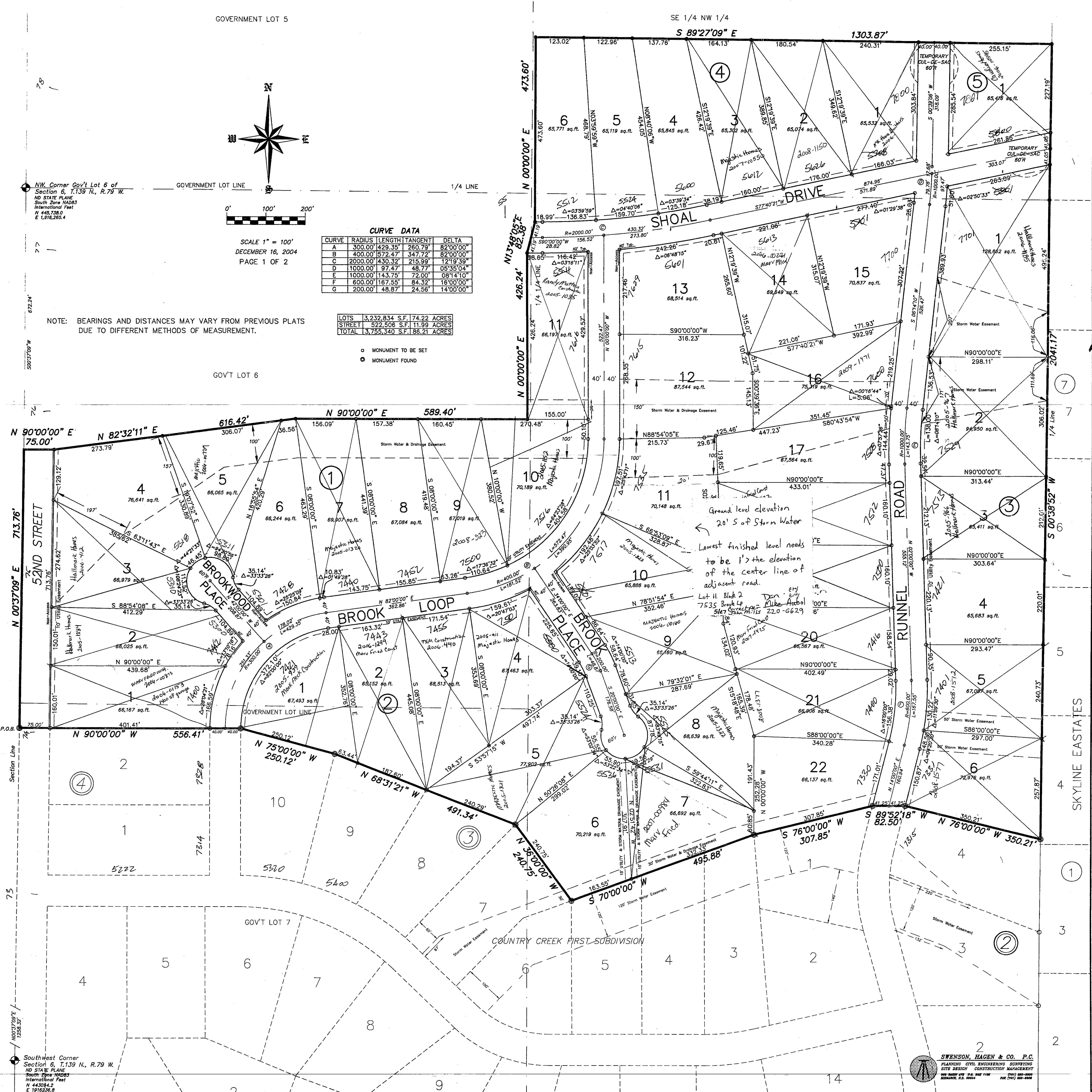
CURVE	RADIUS	LENGTH	TANGENT	DELTA
A	300.00'	429.35'	260.79'	82°00'00"
B	400.00'	572.47'	347.72'	82°00'00"
C	2000.00'	430.32'	215.99'	12°19'39"
D	1000.00'	97.47'	48.77'	05°35'04"
E	1000.00'	143.75'	72.00'	08°14'10"
F	800.00'	167.55'	84.32'	16°00'00"
G	200.00'	48.87'	24.56'	14°00'00"

LOTS	3,232,834 S.F.	74.22 ACRES
STREET	522,508 S.F.	11.99 ACRES
TOTAL	3,755,342 S.F.	86.21 ACRES

NOTE: BEARINGS AND DISTANCES MAY VARY FROM PREVIOUS PLATS DUE TO DIFFERENT METHODS OF MEASUREMENT.

- MONUMENT TO BE SET
- MONUMENT FOUND

GOV'T LOT 6



Southwest Corner Section 6, T.139 N., R.79 W.
NO STATE PLANE
South Zone NAD83
International Feet
N 44304.42
E 1916236.8

SWENSON, HAGEN & CO., P.C.
PLANNING, CIVIL, ENGINEERING, SURVEYING
SITE DESIGN, CONSTRUCTION MANAGEMENT
1100 17th St. S., Suite 1100
Minneapolis, MN 55404
612.338.1100