

# COUNTRY CREEK FIRST SUBDIVISION

PART OF THE SE 1/4 OF THE SW 1/4 & PART OF GOVERNMENT LOT 7  
SECTION 6, TOWNSHIP 139 NORTH, RANGE 79 WEST  
BURLEIGH COUNTY, NORTH DAKOTA

### DESCRIPTION

ALL THAT PART OF GOVERNMENT LOT 7 AND PART OF THE SOUTHWEST 1/4 OF SECTION 6, TOWNSHIP 139 NORTH, RANGE 79 WEST OF THE 5TH PRINCIPAL MERIDIAN, BURLEIGH COUNTY NORTH DAKOTA, DESCRIBED AS FOLLOWS:

BEGINNING AT THE SOUTHWEST CORNER OF SECTION 6; THENCE SOUTH 89 DEGREES 27 MINUTES 13 SECONDS EAST, ALONG THE SOUTH LINE OF SAID SECTION 6, TO THE SOUTHWEST CORNER OF THE SOUTHWEST 1/4, A DISTANCE OF 2586.09 FEET; THENCE NORTH 00 DEGREES 38 MINUTES 52 SECONDS EAST, ALONG THE EAST LINE OF SAID SOUTHWEST 1/4, A DISTANCE OF 1003.11 FEET; THENCE NORTH 78 DEGREES 00 MINUTES 00 SECONDS WEST, A DISTANCE OF 350.21 FEET; THENCE SOUTH 89 DEGREES 52 MINUTES 18 SECONDS WEST, A DISTANCE OF 82.50 FEET; THENCE SOUTH 76 DEGREES 00 MINUTES 00 SECONDS WEST, A DISTANCE OF 307.85 FEET; THENCE SOUTH 70 DEGREES 00 MINUTES 00 SECONDS WEST, A DISTANCE OF 495.88 FEET; THENCE NORTH 36 DEGREES 00 MINUTES 00 SECONDS WEST, A DISTANCE OF 240.75 FEET; THENCE NORTH 68 DEGREES 31 MINUTES 21 SECONDS WEST, A DISTANCE OF 481.34 FEET; THENCE NORTH 75 DEGREES 00 MINUTES 00 SECONDS WEST, A DISTANCE OF 250.12 FEET; THENCE NORTH 90 DEGREES 00 MINUTES 00 SECONDS WEST, TO THE WEST LINE OF SAID SECTION 6, A DISTANCE OF 556.41 FEET; THENCE SOUTH 00 DEGREES 37 MINUTES 09 SECONDS WEST, ALONG SAID WEST SECTION LINE, A DISTANCE OF 1258.32 FEET TO THE POINT OF BEGINNING.

THE ABOVE DESCRIBED TRACT OF LAND CONTAINS 64.91 ACRES MORE OR LESS.

### APPROVAL OF COUNTY PLANNING COMMISSION

THE SUBDIVISION OF LAND AS SHOWN ON THE ANNEXED PLAT HAS BEEN APPROVED BY THE PLANNING COMMISSION OF BURLEIGH COUNTY, ON THE 15<sup>TH</sup> DAY OF March, 2003, IN ACCORDANCE WITH THE LAWS OF THE STATE OF NORTH DAKOTA, ORDINANCES OF THE COUNTY OF BURLEIGH AND REGULATIONS ADOPTED BY THE SAID PLANNING COMMISSION. IN WITNESS WHEREOF ARE SET THE HANDS AND SEALS OF THE CHAIRMAN AND SECRETARY OF THE PLANNING COMMISSION OF BURLEIGH COUNTY.

*Timothy R. Atkinson*  
TIMOTHY R. ATKINSON - CHAIRMAN

*Kevin J. Glatt*  
KEVIN J. GLATT - SECRETARY

### APPROVAL OF BOARD OF COUNTY COMMISSIONERS

THE BOARD OF COUNTY COMMISSIONERS OF BURLEIGH COUNTY, NORTH DAKOTA, HAS APPROVED THE SUBDIVISION OF LAND AS SHOWN ON THE ANNEXED PLAT, HAS ACCEPTED THE DEDICATION OF ALL STREETS SHOWN THEREON, HAS APPROVED THE GROUNDS AS SHOWN ON THE ANNEXED PLAT AS AN AMENDMENT TO THE MASTER PLAN OF BURLEIGH COUNTY, NORTH DAKOTA, AND DOES HEREBY VACATE ANY PREVIOUS PLATTING WITHIN THE BOUNDARY OF THE ANNEXED PLAT.

THE FOREGOING ACTION OF THE BOARD OF COUNTY COMMISSIONERS OF BURLEIGH COUNTY, NORTH DAKOTA, WAS TAKEN BY RESOLUTION APPROVED THE 7 DAY OF April, 2003.

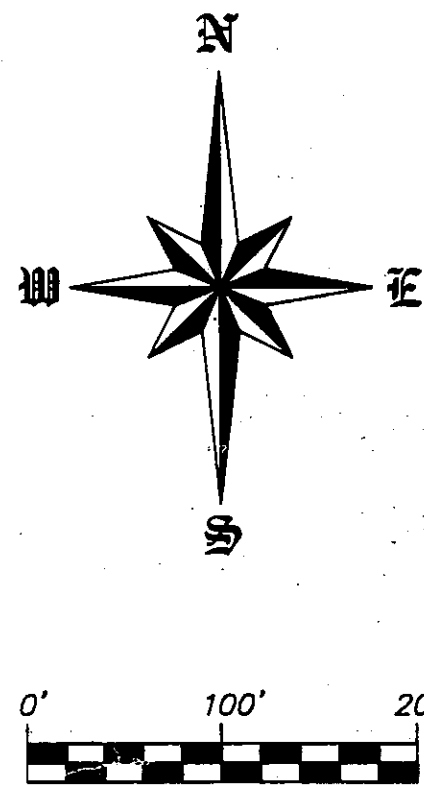
*Claus H. Lembke*  
CLAUS H. LEMBKE - CHAIRMAN

*Kevin J. Glatt*  
ATTEST  
KEVIN J. GLATT - COUNTY AUDITOR

### APPROVAL OF COUNTY ENGINEER

I, JON MILL, COUNTY ENGINEER OF BURLEIGH COUNTY, NORTH DAKOTA, HEREBY APPROVE "COUNTRY CREEK FIRST SUBDIVISION" BURLEIGH COUNTY, NORTH DAKOTA AS SHOWN ON THE ANNEXED PLAT.

*Jon Mill*  
JON MILL  
COUNTY ENGINEER



SCALE 1" = 100'  
OCTOBER 16, 2003

### NOTES

- BASIS OF BEARING ND STATE PLANE SOUTH ZONE
- DENOTES MONUMENT TO BE SET
  - ◐ DENOTES MONUMENT IN PLACE

AREA TABLE	
STREETS	13.75 ACRES
LOTS	51.16 ACRES
TOTAL	64.91 ACRES

### OWNER'S CERTIFICATE & DEDICATION

KNOW ALL MEN BY THESE PRESENTS THAT ARTHUR MARINER AND DOROTHY MARINER, BISMARCK, NORTH DAKOTA, BEING THE OWNERS AND PROPRIETORS OF THE PROPERTY SHOWN ON THE ANNEXED PLAT HAVE CAUSED THAT PORTION DESCRIBED HEREON TO BE SURVEYED AND PLATTED AS "COUNTRY CREEK FIRST SUBDIVISION", BURLEIGH COUNTY, NORTH DAKOTA AND DO SO DEDICATE STREETS AS SHOWN HEREON INCLUDING ALL CULVERTS TO THE PUBLIC USE FOREVER.

THEY ALSO DEDICATE EASEMENTS TO RUN WITH THE LAND, FOR GAS, ELECTRIC, TELEPHONE OR OTHER PUBLIC UTILITIES OR SERVICES ON OR UNDER THOSE CERTAIN STRIPS OF LAND DESIGNATED HEREON AS "UTILITY EASEMENTS".

THEY FURTHERMORE DEDICATE STORM WATER EASEMENTS TO RUN WITH THE LAND FOR CONSTRUCTION, RECONSTRUCTION, REPAIRING AND MAINTAINING STORM WATER MANAGEMENT FACILITIES TOGETHER WITH NECESSARY APPURTENANCES THERE TO, UNDER, OVER, THROUGH AND ACROSS SAID EASEMENT FOR SURFACE WATER DRAINAGE AND MANAGEMENT OF STORM WATER FLOW OVER AND/OR UNDER SAID EASEMENT.

STATE OF NORTH DAKOTA } SS  
COUNTY OF BURLEIGH }  
ON THIS 15<sup>TH</sup> DAY OF MARCH, 2003, BEFORE ME PERSONALLY APPEARED ARTHUR MARINER AND DOROTHY MARINER KNOWN TO ME TO BE THE PERSONS WHO ARE DESCRIBED IN AND WHOSE NAMES ARE SUBSCRIBED TO THE WITHIN INSTRUMENT AND THEY ACKNOWLEDGED TO ME THAT THEY EXECUTED THE SAME.

*David Patience*  
DAVID PATIENCE  
Notary Public, STATE OF NORTH DAKOTA  
My Commission Expires AUGUST 24, 2004

*David Patience*  
DAVID PATIENCE, NOTARY PUBLIC  
BURLEIGH COUNTY, NORTH DAKOTA  
MY COMMISSION EXPIRES AUGUST 24, 2004

### SURVEYOR'S CERTIFICATE

I, TODD MARSHALL, A REGISTERED LAND SURVEYOR IN THE STATE OF NORTH DAKOTA, HEREBY CERTIFY THE ANNEXED PLAT IS A TRUE COPY OF THE NOTES OF A SURVEY PERFORMED UNDER MY SUPERVISION AND COMPLETED ON JANUARY 14, 2003, AND THAT ALL INFORMATION SHOWN HEREON IS TRUE AND CORRECT TO THE BEST OF MY KNOWLEDGE AND BELIEF.

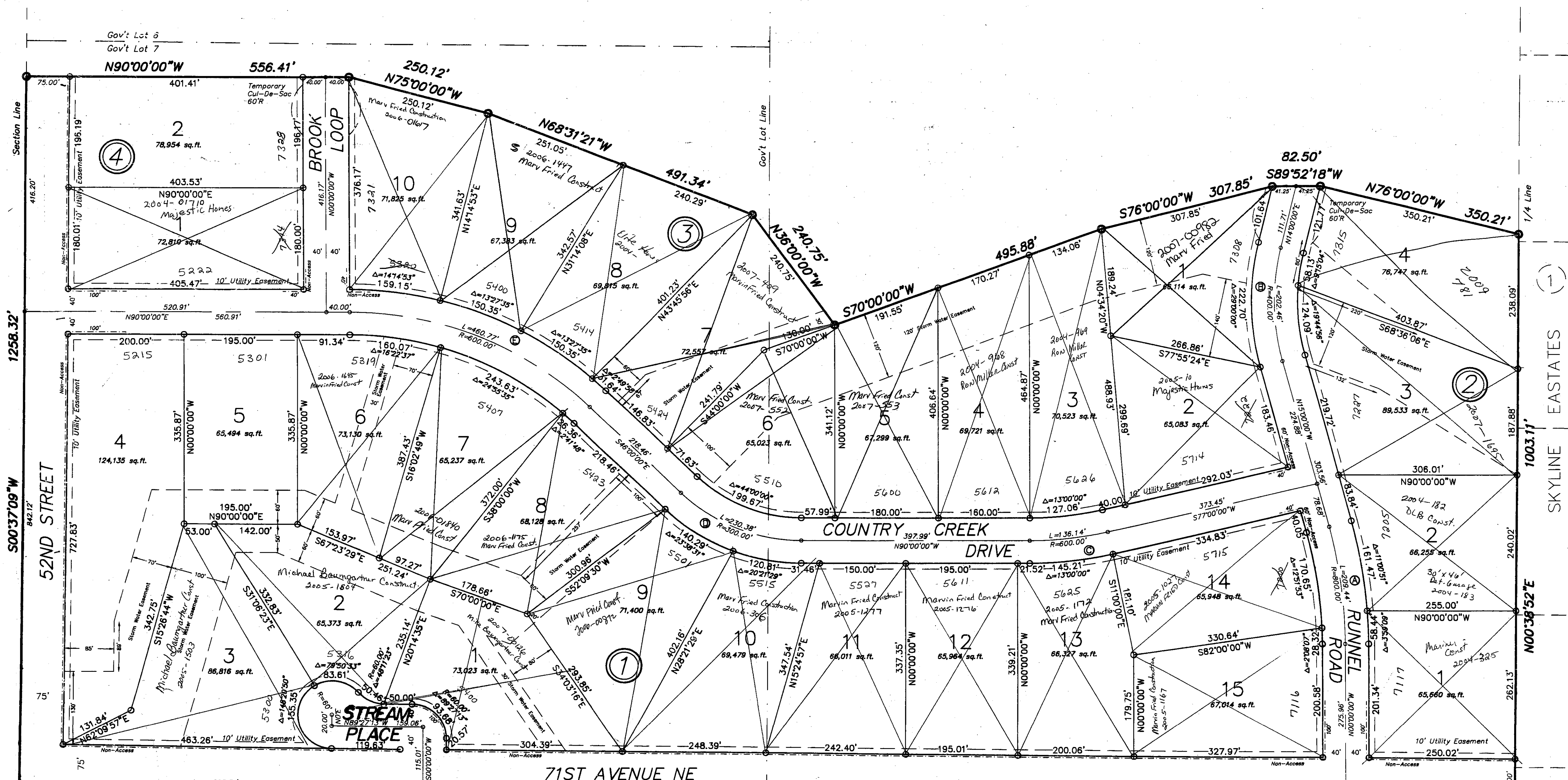
STATE OF NORTH DAKOTA } SS  
COUNTY OF BURLEIGH }  
ON THIS 24<sup>TH</sup> DAY OF October, 2003, BEFORE ME PERSONALLY APPEARED TODD MARSHALL, KNOWN TO ME TO BE THE PERSON DESCRIBED IN AND WHO EXECUTED THE FOREGOING SURVEYOR'S CERTIFICATE AND HE ACKNOWLEDGED TO ME THAT HE EXECUTED THE SAME.

*David Patience*  
DAVID PATIENCE  
Notary Public, STATE OF NORTH DAKOTA  
My Commission Expires AUGUST 24, 2004

*David Patience*  
DAVID PATIENCE, NOTARY PUBLIC  
BURLEIGH COUNTY, NORTH DAKOTA  
MY COMMISSION EXPIRES AUGUST 24, 2004

### CURVE DATA

CURVE	RADIUS	LENGTH	TANGENT	DELTA
A	500.00'	208.44'	103.32'	153°00'00"
B	400.00'	202.48'	103.45'	29°00'00"
C	600.00'	136.14'	68.38'	13°00'00"
D	300.00'	230.38'	121.21'	44°00'00"
E	600.00'	480.77'	242.42'	44°00'00"



Point of Beginning  
Southwest Corner Section 6, T.139 N., R.79 W.  
ND STATE PLANE  
South Zone NAD83  
International Feet  
N 443084.2  
E 1916236.8

BECK SUB      PAULAS ACRES      PAPACHEK SUB      OSTER SUB

Section Line      Basis of Bearing      South 1/4 Corner Section 6, T.139 N., R.79 W.  
ND STATE PLANE  
South Zone NAD83  
International Feet  
N 443084.2  
E 1916236.8

