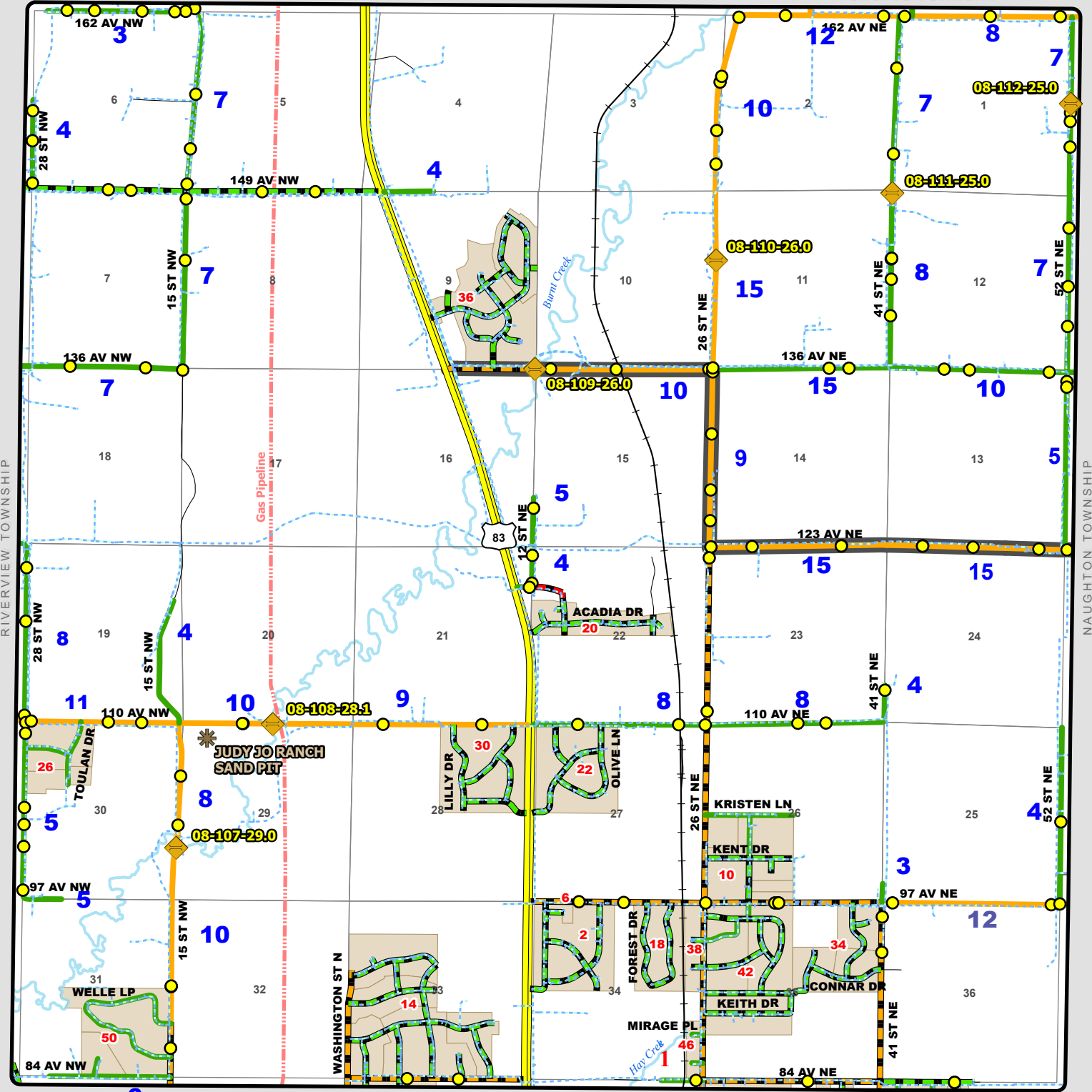


TOWNSHIP ROAD MAINTENANCE MAP BURNT CREEK #24 (T140N R80W)



GLENVIEW TOWNSHIP

CROFTE TOWNSHIP



- Culvert
- Fire Hydrants & Cleanouts

- | | | | |
|--|---|--|---|
| County Gravel Road | Gravel - Winter Maintenance | Paved - Winter Maintenance | State & Federal Highways |
| County Paved Road | Gravel - Year Round Maintenance | Paved - Year Round Maintenance | Federal Aid Road |
| Gravel - Summer Maintenance | Paved - Summer Maintenance | Township/County Jurisdiction | Other Roads |
| | | | Bridge |
| | | | Water Pipe |

BURNT CREEK SUBDIVISIONS

CODE	NAME	SECTION
2	BRENTWOOD ESTATES	34
6	BRENTWOOD ESTATES REPLAT	34
10	FOUR Ks ESTATES	26
10	FOUR Ks ESTATES REPLAT	2
14	HARVEST GROVE 1ST SUBDIVISION	2
14	HARVEST GROVE 2ND SUBDIVISION	33
14	HARVEST GROVE 3RD SUBDIVISION	33
14	HARVEST GROVE 4TH SUBDIVISION	33
14	HARVEST RIDGE SUBDIVISION	33
18	HAY CREEK PINES SUBDIVISION	34
20	HERITAGE RESERVE SUBDIVISION	22
22	NORTHWOOD ESTATES REPLAT	27
26	PARIS PLACE FIRST SUBDIVISION	3
26	PARIS PLACE SECOND SUBDIVISION	3
30	PRAIRIECREST 1ST SUBDIVISION	28
30	PRAIRIECREST 2ND SUBDIVISION	28
34	PRAIRIE PINES 1ST SUBDIVISION	35
34	PRAIRIE PINES 2ND SUBDIVISION	35
34	PRAIRIE PINES 3RD SUBDIVISION	35
36	RANCH SUBDIVISION (THE)	9
36	RANCH 2ND SUBDIVISION (THE)	9
38	RUSTIC ACRES 1ST REPLAT	34
42	SHAMROCK ACRES	2
42	SHAMROCK ACRES 2ND SUBDIVISION	1
42	SHAMROCK ACRES 3RD SUBDIVISION	1
46	SUNNY MEADOW ESTATE REPLAT	2
50	WELLE 2ND SUBDIVISION	4
50	WELLE SUBDIVISION	4