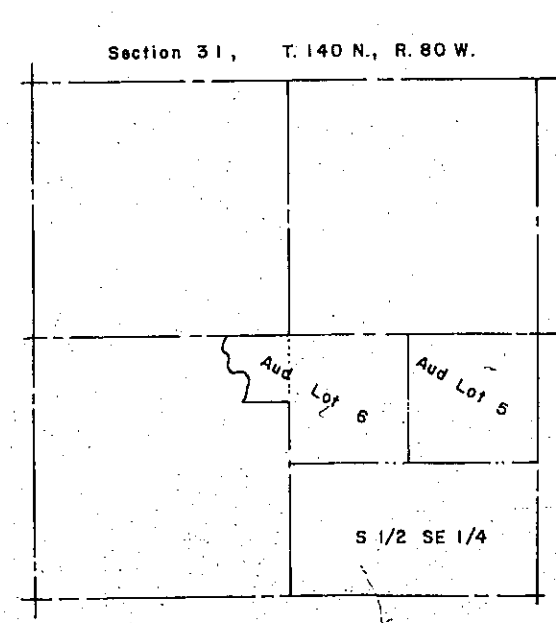


Scale 1" = 100'  
Date August 30, 1976

- NOTES
- All curve data is by chord definition unless otherwise noted.
  - ⊙ Denotes iron pipe monument to be set.

| Curve | Δ            | D           | T       | L       | R       | Ext.    |
|-------|--------------|-------------|---------|---------|---------|---------|
| A     | 24°-00'-00"  | 13°-00'-00" | 93.88'  | 184.62' | 441.68' | 9.87'   |
| B     | 56°-00'-00"  | 22°-00'-00" | 145.25' | 263.64' | 262.04' | 37.56'  |
| C     | 80°-00'-00"  | 44°-00'-00" | 112.00' | 181.82' | 133.47' | 40.76'  |
| D     | 40°-00'-00"  | 44°-00'-00" | 48.58'  | 90.91'  | 133.47' | 8.57'   |
| E     | 36°-00'-00"  | 44°-00'-00" | 43.37'  | 81.82'  | 133.47' | 6.87'   |
| F     | 36°-00'-00"  | 22°-00'-00" | 90.23'  | 172.73' | 262.04' | 15.10'  |
| G     | 144°-00'-00" | 32°-00'-00" | 558.29' | 450.00' | 181.40' | 40.562' |
| H     | 2°-50'-00"   | 8°-00'-00"  | 138.25' | 272.92' | 716.78' | 13.21'  |
| I     | 102°-30'-00" | 36°-00'-00" | 191.35' | 269.74' | 153.58' | 91.78'  |
| J     | 88°-40'-00"  | 34°-00'-00" | 167.08' | 260.78' | 171.02' | 68.07'  |



Done  
NB  
12/12/76

Welle Subdivision  
ETA  
Plat Number 797