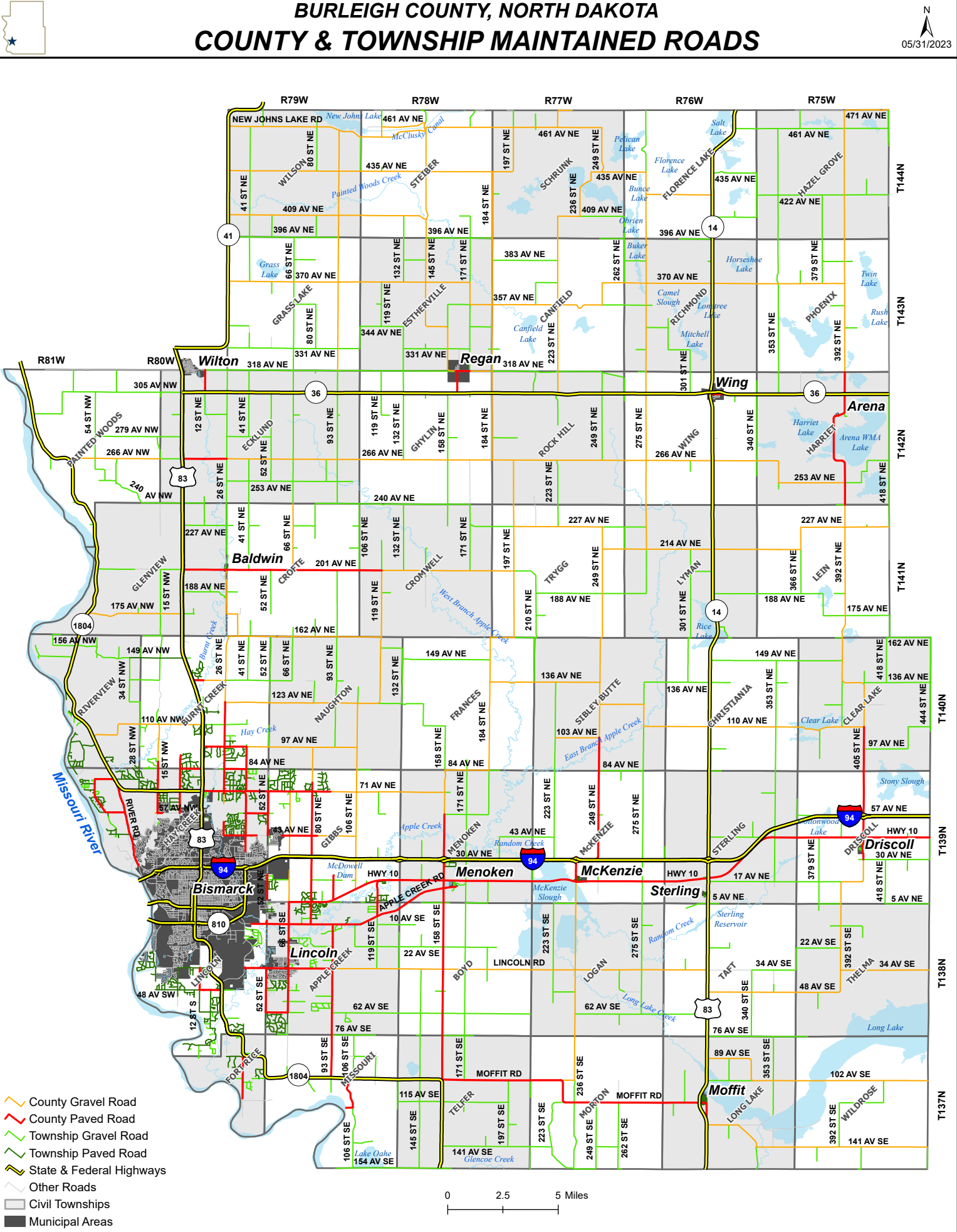


BURLEIGH COUNTY, NORTH DAKOTA COUNTY & TOWNSHIP MAINTAINED ROADS



- County Gravel Road
- County Paved Road
- Township Gravel Road
- Township Paved Road
- State & Federal Highways
- Other Roads
- Civil Townships
- Municipal Areas

0 2.5 5 Miles

Map produced by Burleigh County GIS. This map is for representation use only and does not represent a survey. No liability is assumed as to the accuracy of the data delineated hereon.