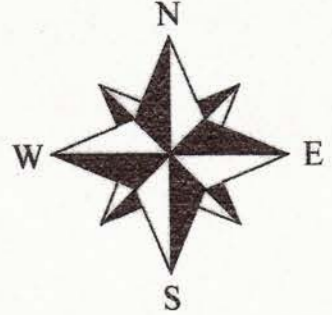
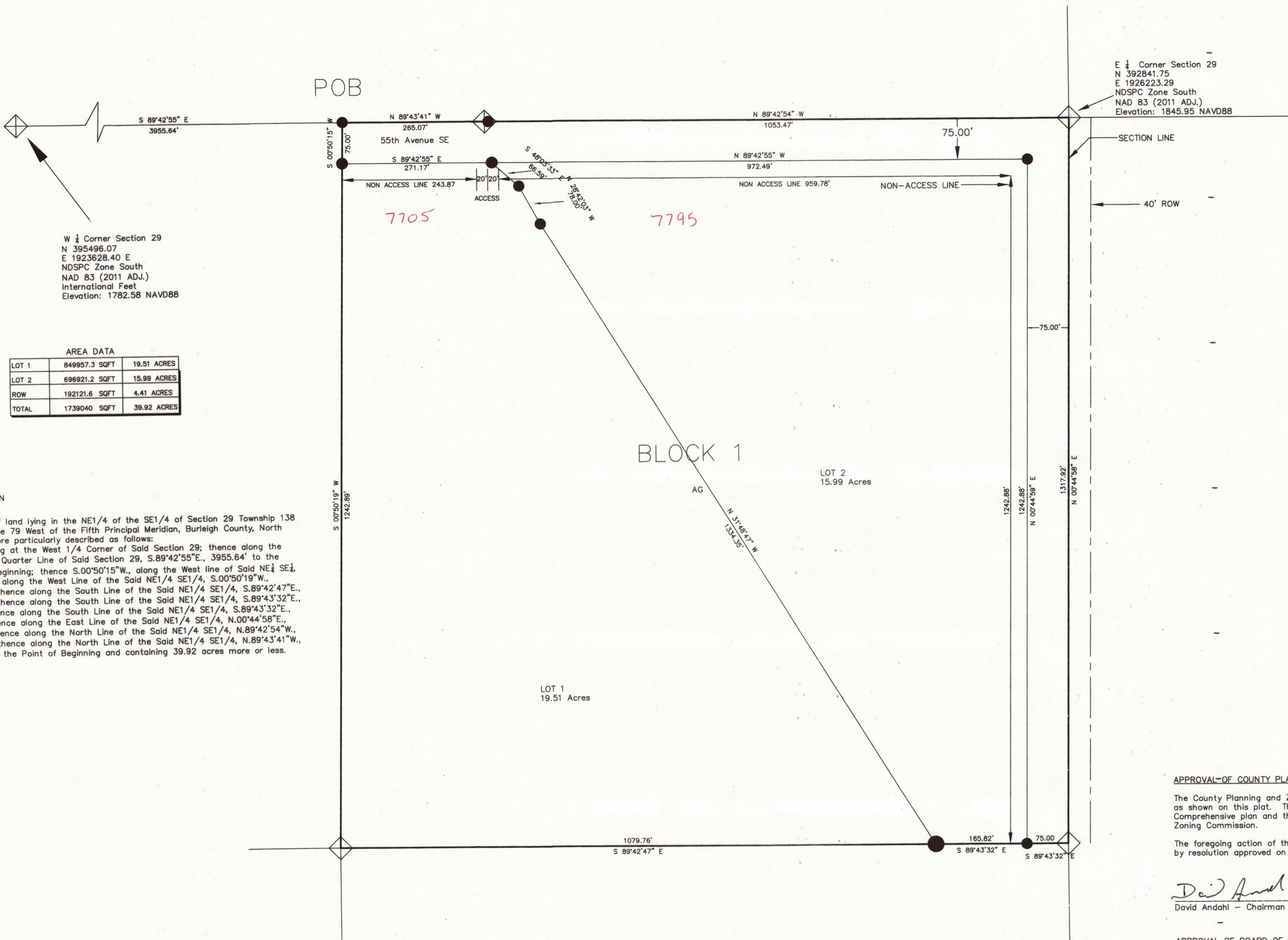


SCHAAN SUBDIVISION

LOCATED IN THE NE 1/4 SE 1/4 OF SECTION 29 TOWNSHIP
138 NORTH RANGE 79 WEST
BURLEIGH COUNTY, NORTH DAKOTA

N
W  E
S

Meridian Land Surveys
Michael Zimny
1022 E. Divide Ave. Suite G
P.O. Box 2399
Bismarck, North Dakota 58502-2399
06/29/2018



W 1/4 Corner Section 29
N 395496.07
E 1923628.40 E
NDSPC Zone South
NAD 83 (2011 ADJ.)
International Feet
Elevation: 1782.58 NAVD88

E 1/4 Corner Section 29
N 392841.75
E 1926223.29
NDSPC Zone South
NAD 83 (2011 ADJ.)
Elevation: 1845.95 NAVD88

AREA DATA		
LOT 1	849957.3 SQFT	19.51 ACRES
LOT 2	896921.2 SQFT	15.99 ACRES
ROW	192121.6 SQFT	4.41 ACRES
TOTAL	1739040 SQFT	39.92 ACRES

DESCRIPTION
A parcel of land lying in the NE1/4 of the SE1/4 of Section 29 Township 138 North Range 79 West of the Fifth Principal Meridian, Burleigh County, North Dakota, more particularly described as follows:
Commencing at the West 1/4 Corner of Said Section 29; thence along the East-West Quarter Line of Said Section 29, S.89°42'55"E., 3955.64' to the Point of Beginning; thence S.00°50'15"W., along the West line of Said NE1/4 SE1/4, 75'; thence along the West Line of the Said NE1/4 SE1/4, S.00°50'19"W., 1242.89'; thence along the South Line of the Said NE1/4 SE1/4, S.89°42'47"E., 1079.76'; thence along the South Line of the Said NE1/4 SE1/4, S.89°43'32"E., 165.82'; thence along the South Line of the Said NE1/4 SE1/4, S.89°43'32"E., 75.00'; thence along the East Line of the Said NE1/4 SE1/4, N.00°44'58"E., 1317.92'; thence along the North Line of the Said NE1/4 SE1/4, N.89°42'54"W., 1053.47'; thence along the North Line of the Said NE1/4 SE1/4, N.89°43'41"W., 265.07' to the Point of Beginning and containing 39.92 acres more or less.

APPROVAL OF COUNTY PLANNING AND ZONING COMMISSION
The County Planning and Zoning Commission, of Burleigh County, North Dakota, hereby approves Schaan Subdivision, as shown on this plat. This plat was done in accordance with the laws of the State of North Dakota, the Comprehensive plan and the ordinances of the County of Burleigh and regulations adopted by said Planning and Zoning Commission.
The foregoing action of the County Planning and Zoning Commission of Burleigh County, North Dakota, was taken by resolution approved on the 13th day of June, 2018.

David Andahl
David Andahl - Chairman
Ray Ziegler
ATTEST: Ray Ziegler - Secretary

APPROVAL OF BOARD OF COUNTY COMMISSION
The Board of County Commissioners of the County of Burleigh, North Dakota, has approved the subdivision of land as shown on this plat, has accepted the dedication of all streets shown thereon, and does hereby vacate any previous platting within the boundary of this plat.
This plat was done in accordance with the laws of the State of North Dakota, the comprehensive plan and ordinances of the County of Burleigh.
The foregoing action of the Board of County Commission of Burleigh County, North Dakota, was taken by resolution approved on the 13th day of June, 2018.

Jim Peluso
Jim Peluso - Chairman
Kevin J. Glatt
ATTEST: Kevin J. Glatt - County Auditor

OWNER'S CERTIFICATE OF DEDICATION
We, the undersigned, being the sole owners of the land platted hereon, do hereby voluntarily consent to the execution of said plat, and do dedicate all the streets, alleys, parks and public grounds as shown hereon including all sewers, culverts, bridges, waterlines, sidewalks and other improvements on or under such streets, alleys or other public grounds, whether such improvements are shown hereon or not, to public use forever. We also dedicate easements to run with the lands for water, sewer, gas, electricity, telephone, or other public utility lines of services under, on or over these certain strips of land designated as "Utility Easements".

Charles Schaan
Charles Schaan
25037 S Desert Trail Court
Sun Lakes, AZ, 85248

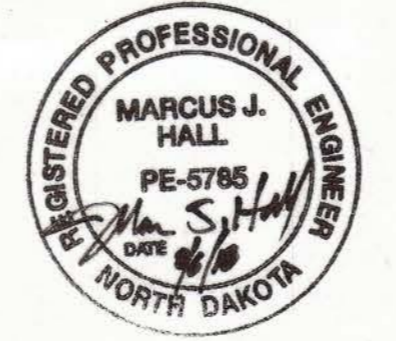
Subscribed and sworn to before me, a notary public, this 13th day of July, 2018

Debra Lawler
Debra Lawler
Burleigh County, North Dakota
My Commission expires February 1, 2020

APPROVAL OF THE COUNTY ENGINEER
I, Marcus J. Hall, County Engineer of the County of Burleigh, North Dakota, hereby approve this plat of the Strand Subdivision, as shown on this plat.

Dated this 6th day of August, 2018

Marcus J. Hall
Marcus J. Hall P.E.
County Engineer



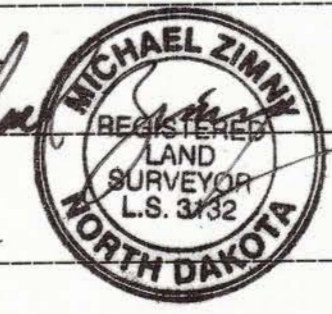
- SURVEYOR'S NOTES**
- Survey completed for Chuck Schaan of 25037 S Desert Trail Court, Sun Lakes, Arizona 85248
 - Basis of Bearing - GPS observations using geodetic bearings and ground distances, North Dakota South Zone 3302 (2011 ADJ), international feet. Elevations are based on NAVD88.

- Calculated point, nothing set or found
- Found existing monument
- Set 18" Spike and All tag

- Section Line
- Right of Way
- Non-Access Line

SURVEYOR'S CERTIFICATE AND ACKNOWLEDGEMENT:
I, Michael Zimny, a professional land surveyor in the State of North Dakota, hereby certify that this plat is a correct representation of a survey performed under my supervision and completed on 13th day of July, 2018, that all information shown hereon is true and correct to the best of my knowledge and belief, and that all required monuments have been set.

Date: 7/13/2018
Signed by: *Michael Zimny*
NDSPLS No: 3072



Taxes and special assessments paid, all liens created under section 57-02-08.3 satisfied, if any, and TRANSFER accepted this 13th day of July, 2018.
Kevin J. Glatt
Burleigh County Auditor
Deputy, Burleigh County Auditor

