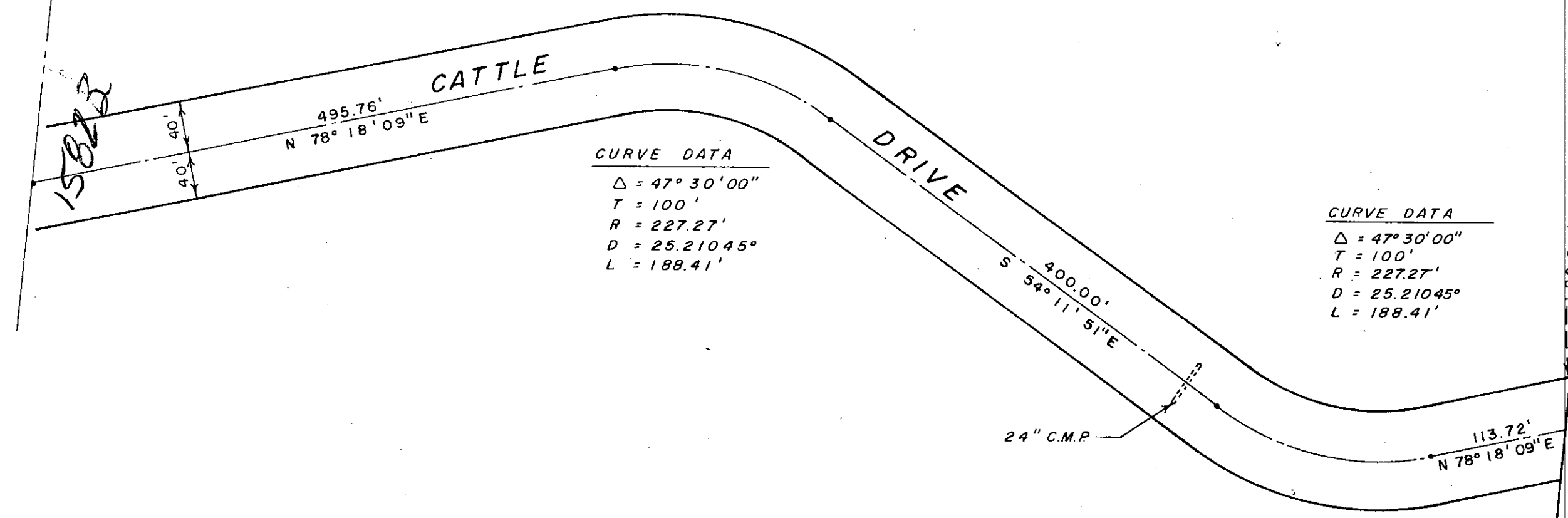


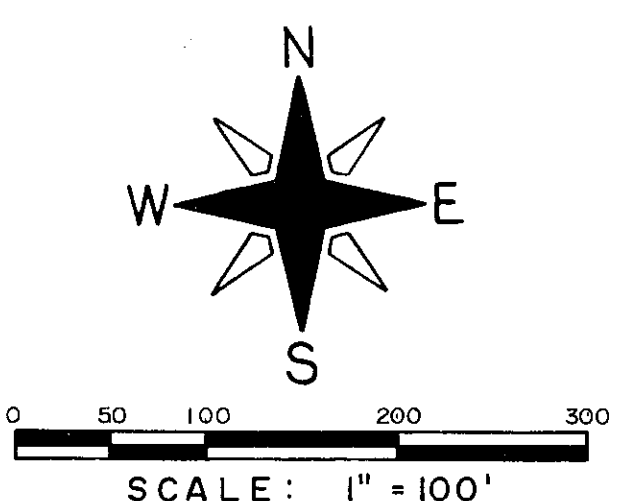
32 33  
5 4

1406.80'  
S 05° 25' 57" W



CURVE DATA  
Δ = 47° 30' 00"  
R = 227.27'  
D = 252.1045'  
L = 188.41'

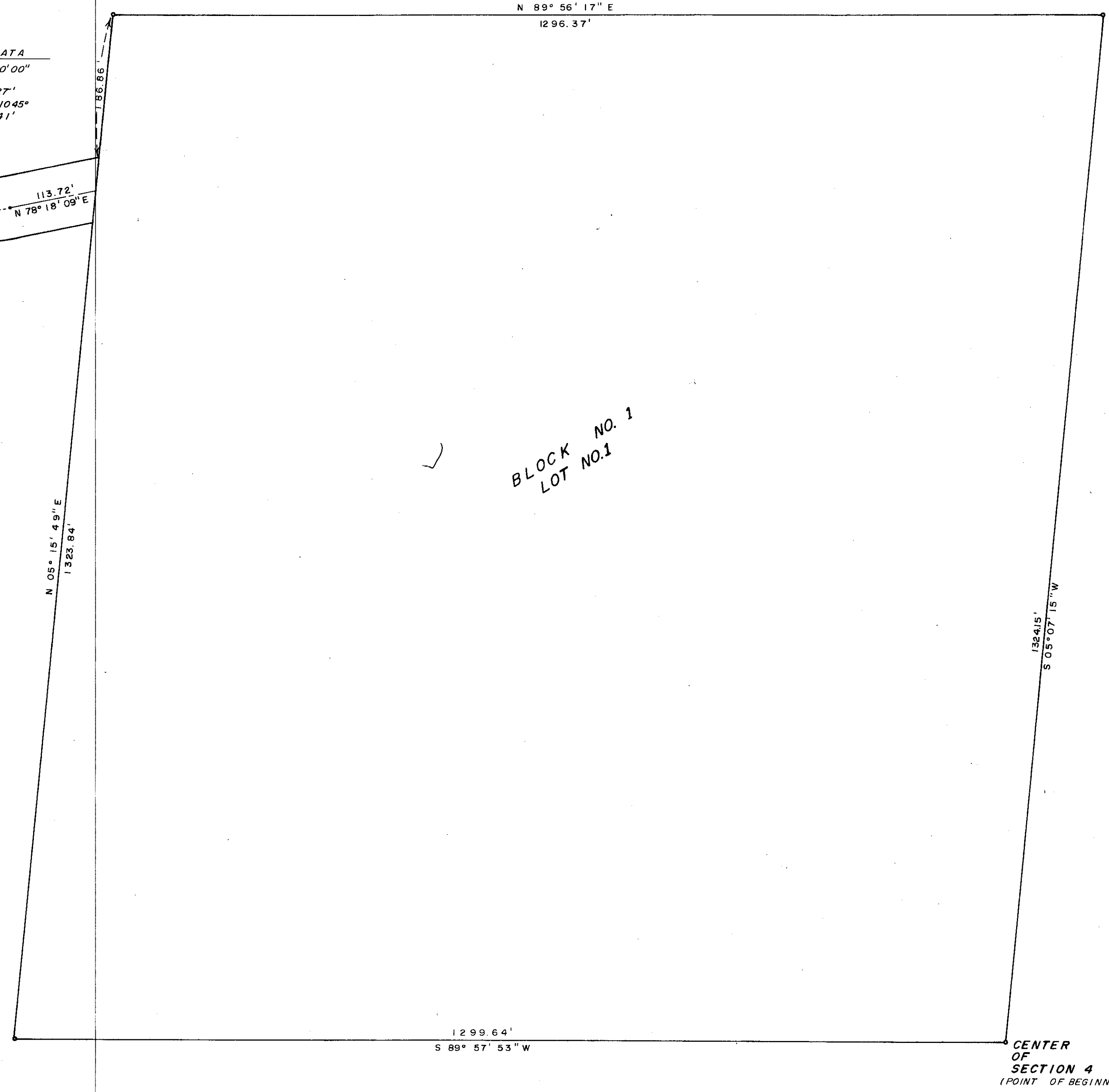
CURVE DATA  
Δ = 47° 30' 00"  
R = 227.27'  
D = 252.1045'  
L = 188.41'



# Circle C Ranch

SE 1/4 NW 1/4, SEC. 4, TWP. 140N, RGE 80W, BURLEIGH CO., N. D.  
3-18-80 39.288Ac. ZONED AG.

Starting at the Southeast corner of the Northwest Quarter, Section 4, Township 140 North, Range 80 West, 5th P.M., Burleigh County, which is the center of section and point of beginning; thence South 89° 57' 53" West a distance of 1,299.64 feet; thence North 05° 15' 49" East a distance of 1,323.84 feet; thence North 89° 56' 17" East a distance of 1,296.37 feet; thence South 05° 07' 15" West a distance of 1,324.15 feet to the point of beginning. The above described tract being the Southeast Quarter Northwest Quarter, Section 4, Township 140 North, Range 80 West, 5th P.M., Burleigh County and contains 39.288 acres.



BLOCK NO. 1  
LOT NO. 1

CENTER OF SECTION 4 (POINT OF BEGINNING)

APPROVAL OF BOARD OF COUNTY COMMISSIONERS

The Board of County Commissioners of the county of Burleigh, North Dakota has approved the subdivision of land as shown on the plat, has accepted the dedication of all streets shown thereon and has approved the grounds as shown on the plat as an amendment to the master plat of Bismarck.

The foregoing action of the Board of County Commissioners of Burleigh, North Dakota, was taken by resolution approved the 7<sup>th</sup> day of May, 1980.

*Bernice Asbridge*  
Bernice Asbridge, Secretary  
*Clifford Giese*  
ATTEST  
Clifford Giese, Chairman

PLANNING COMMISSION APPROVAL

The subdivision of land as shown on the plat has been approved by the Planning Commission of the county of Burleigh on the 21<sup>st</sup> day of April, 1980 in accordance with the laws of the state of North Dakota, ordinances of the county of Burleigh, and regulations adopted by the said Planning Commission. In witness whereof are set the hands and seals of the Chairman and secretary of the Planning Commission of the county of Burleigh.

*Bernice Asbridge*  
Bernice Asbridge, Secretary  
*Duane A. Bohrer*  
Duane A. Bohrer, Chairman

APPROVAL OF COUNTY ENGINEER

I, Jon Jennings, County Engineer of the county of Burleigh, North Dakota, hereby approve the above subdivision.  
*Jon Jennings*  
Jon Jennings, County Engineer

SURVEYORS CERTIFICATE

I, Delton D. Schulz, a registered professional engineer and land surveyor in the state of North Dakota hereby certify that the above plat is a true copy of the notes of a survey performed under my supervision and completed on the 3<sup>rd</sup> day of JANUARY, 1980, that all information shown hereon is true to the best of my knowledge and belief.

*Delton D. Schulz*  
Delton D. Schulz, P.E. & L.S.  
Reg. No. 1088

STATE OF NORTH DAKOTA  
COUNTY OF BURLEIGH SS

On this 31<sup>st</sup> day of MARCH, 1980, before me personally appeared Delton D. Schulz, known to me to be the person who executed the foregoing surveyors certificate and he acknowledged to me that he executed the same of his own free will and deed.

*Debra Joersz*  
Debra Joersz, Notary Public  
Burleigh County, North Dakota  
Commission Expires 2-16-83

OWNERS CERTIFICATE & DEDICATION

KNOW ALL MEN BY THESE PRESENTS that Eileen Wickenheiser and Trish Lenihan being the owners of the property shown on the above plat have caused that portion described and shown on the plat to be surveyed and platted as "Circle C Ranch" and do so dedicate streets, including all sewers and culverts and other public utilities shown hereon or not to the public use forever.

It also dedicated easements to run with the land for water, sewer, gas, electric, telephone or other public utilities or services under those certain strips of land designated as "utility easements."

*Eileen Wickenheiser*  
EILEEN WICKENHEISER  
*Trish Lenihan*  
TRISH LENIHAN

STATE OF NORTH DAKOTA  
COUNTY OF BURLEIGH SS

On this 27<sup>th</sup> day of MAY, 1980, before me personally appeared Eileen Wickenheiser and Trish Lenihan of Bismarck, North Dakota and acknowledged the signing of the foregoing plat to be their voluntary act and deed. In testimony whereof, I have set my hand and seal on the day and date written above.

*Delton D. Schulz*  
Delton D. Schulz, Notary Public  
Burleigh County, North Dakota  
Commission Expires 2-4-83

*Delton D. Schulz*  
Circle C Ranch  
County  
Plat Number 1010