

COUNTRY HILLS SUBDIVISION

PART OF THE SW 1/4 AND THE SE 1/4 OF
 SECTION 4, T. 139 N., R. 79 W.
BURLEIGH COUNTY, NORTH DAKOTA

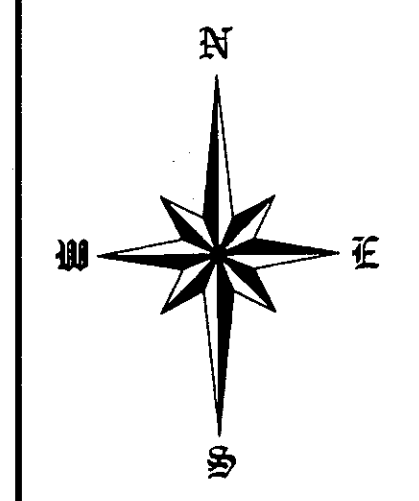
NOTE: RESTRICTED USE ON STORM WATER EASEMENT
 STORM WATER EASEMENTS ARE CONSTRUCTED TO COLLECT, STORE, CONVEY, AND/OR TREAT
 STORM WATER RUNOFF. THEY ARE CONSTRUCTED TO PREVENT OR LIMIT FLOOD DAMAGE AND
 ENVIRONMENT IMPACTS TO PROPERTIES BOTH WITHIN AND OUTSIDE OF THE PLAT.
 PROPERTY OWNERS SHALL NOT PLACE ANY TYPE OF FILL MATERIAL OR MAKE ANY ALTERATIONS
 TO THE PERMANENT VEGETATED COVER ON THE EASEMENT (NO OPEN TILED SOIL AREAS WILL BE
 ALLOWED.) THEY SHALL NOT PLANT ANY TREES OR SHRUBS WITHIN THE EASEMENT WITH THE
 INTENT TO SCREEN OR PROVIDE A SNOW SHELTER BELT. INDIVIDUAL TREES AND SHRUBS MAY
 BE PLANTED WITHIN THE EASEMENT WITH THE PRIOR APPROVAL OF THE COUNTY ENGINEER.
 PROPERTY OWNERS SHALL NOT CONSTRUCT ANY TYPE OF STRUCTURE (INCLUDING GARAGES,
 OUTBUILDINGS, SHEDS, DRIVEWAYS, PARKING PADS, LANDSCAPING, GARDENS, AND SEPTIC FIELDS)
 OR OTHER FEATURE THAT INTERFERES WITH THE INTENDED USE OF THE STORM WATER
 EASEMENT.

CURVE	DELTA ANGLE	TANGENT	RADIUS	ARC LENGTH
C1	25°20'49"	134.94'	600.09'	265.47'
C2	13°24'22"	70.53'	600.09'	140.41'
C3	25°20'49"	134.94'	600.09'	265.47'
C4	39°00'00"	106.25'	300.04'	204.23'
C5	41°15'00"	112.93'	300.04'	216.02'
C6	27°35'49"	147.38'	600.09'	289.04'
C7	47°36'00"	132.34'	300.04'	249.27'
C8	2°15'00"	78.56'	4000.60'	157.10'

AREA DATA

LOTS	1,470,736 S.F.	108.14 ACRES
STREET	868,893 S.F.	19.95 ACRES
TOTAL	5,579,630 S.F.	128.09 ACRES

SW 1/4	2,998,743 S.F.	59.66 ACRES
SE 1/4	2,980,887 S.F.	68.43 ACRES



OCTOBER 6, 2012
 SCALE - 1"=100'
 0 50' 100' 150'

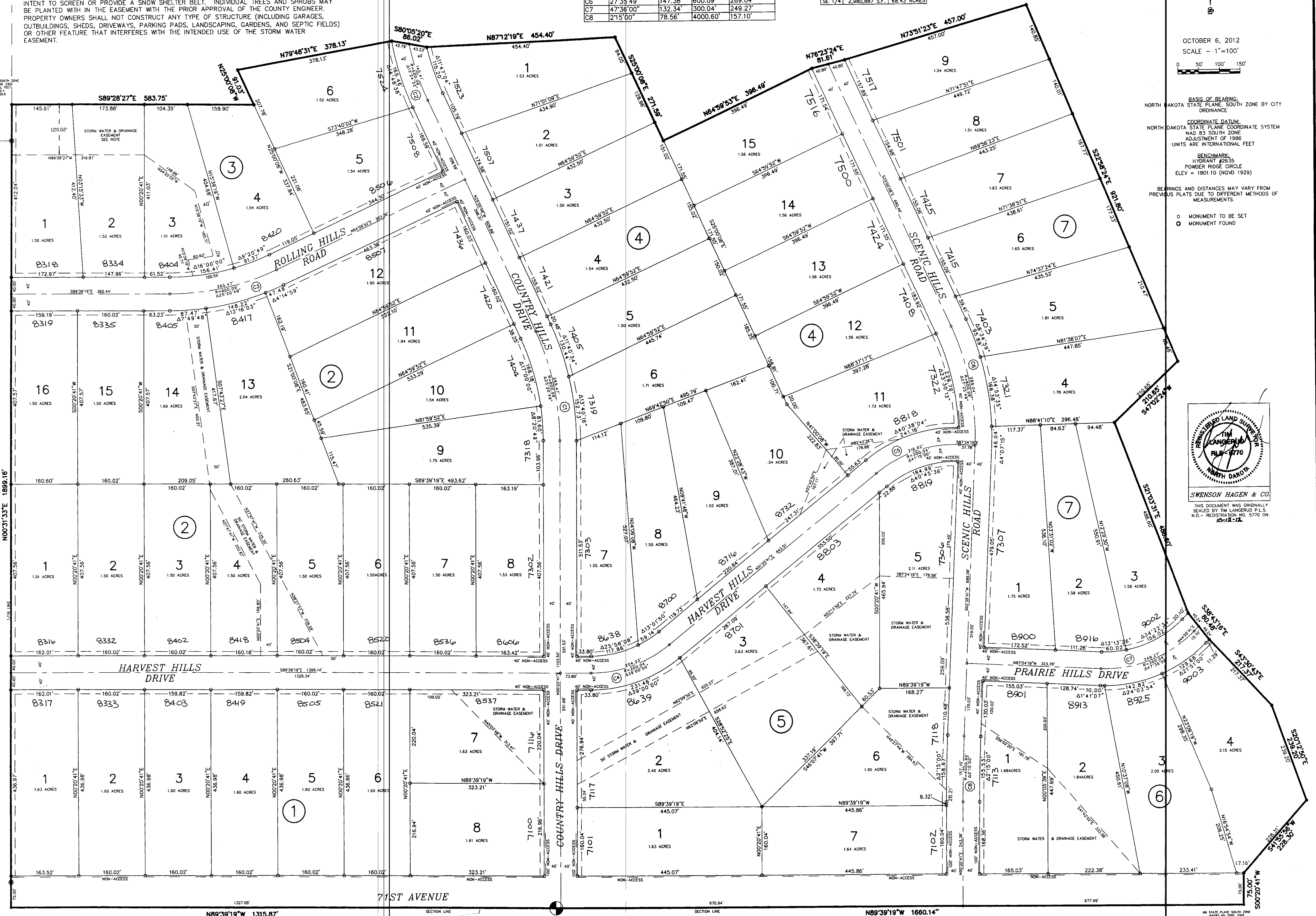
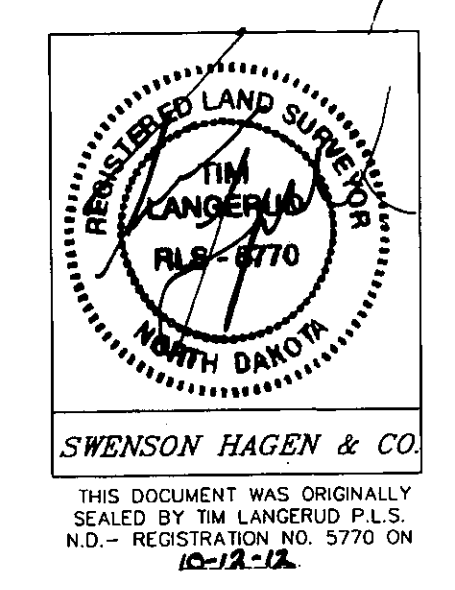
BASIS OF BEARING:
 NORTH DAKOTA STATE PLANE, SOUTH ZONE BY CITY
 ORDINANCE

COORDINATE DATUM:
 NORTH DAKOTA STATE PLANE COORDINATE SYSTEM
 NAD 83 SOUTH ZONE
 ADJUSTMENT OF 1986
 UNITS ARE INTERNATIONAL FEET

BENCHMARK:
 HYDRANT #235
 POWDER RIDGE CIRCLE
 ELEV = 1801.10 (NGVD 1929)

BEARINGS AND DISTANCES MAY VARY FROM
 PREVIOUS PLATS DUE TO DIFFERENT METHODS OF
 MEASUREMENTS.

○ MONUMENT TO BE SET
 ⊙ MONUMENT FOUND



Done
 HRA
 11/9/13