

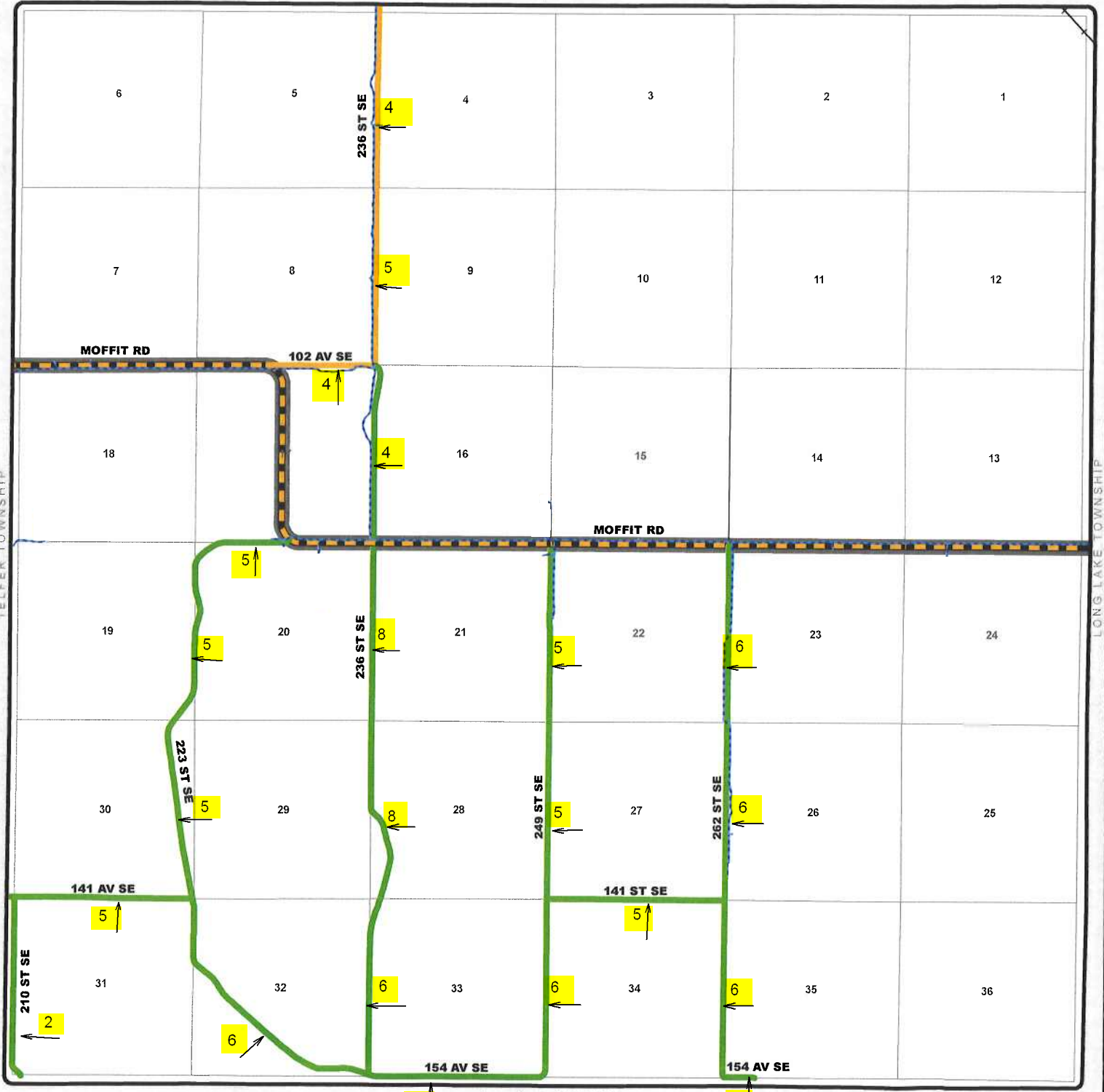


# TOWNSHIP ROAD MAINTENANCE MAP

## MORTON #47 (T137N R77W)

N  
12/08/2014

LOGAN TOWNSHIP



Telfer Township

Long Lake Township

EMMONS COUNTY

- |                             |                                 |                                |                          |            |
|-----------------------------|---------------------------------|--------------------------------|--------------------------|------------|
| County Gravel Road          | Gravel - Winter Maintenance     | Paved - Winter Maintenance     | State & Federal Highways | Bridge     |
| County Paved Road           | Gravel - Year Round Maintenance | Paved - Year Round Maintenance | Federal Aid Road         | Water Pipe |
| Gravel - Summer Maintenance | Paved - Summer Maintenance      | Township/County Jurisdiction   | Other Roads              |            |