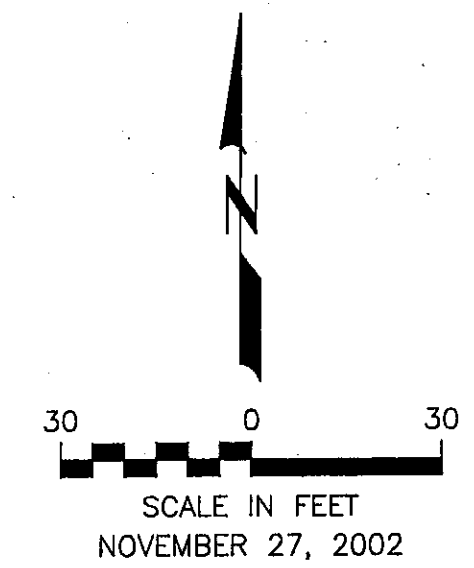


**PLAT OF
GIESLER SUBDIVISION
GIBBS TOWNSHIP
BURLEIGH COUNTY, NORTH DAKOTA**
PART OF THE NW 1/4 OF SECTION 34, TOWNSHIP 139 NORTH,
RANGE 79 WEST OF THE 5th PRINCIPAL MERIDIAN



SQUARE FOOTAGE & ACREAGE		
LOT NO.	SQ. FT.	ACRES
1	174,240.00	4.00
STREETS	24,352.38	0.56
TOTAL	198,592.38	4.56

LEGEND

- IRON MONUMENT FOUND
- MONUMENT TO BE PLACED

Taxes and special assessments paid and TRAFFIC accepted this 25 day of April 2003
By: *[Signature]*
Deputy, Burleigh County Auditor

DESCRIPTION OF PROPERTY

A tract of land being all that part of the NW 1/4 of Section 34, Township 139 North, Range 79 West of the 5th Principal Meridian, Burleigh County, North Dakota, more fully described as follows:

Commencing at the Northwest corner of the NW 1/4 of Section 34, Township 139 North, Range 79 West; thence S 00°41'04" W along the west line of said Section 34 a distance of 659.81 feet to the point of beginning; thence S 00°41'04" W along the west line of said Section 34 a distance of 325.00 feet; thence S 89°02'56" E a distance of 611.14 feet; thence N 00°41'04" E a distance of 325.00 feet; thence N 89°02'56" W a distance of 611.14 feet to the point of beginning.

The above described tract contains 4.56 acres more or less.

APPROVAL OF COUNTY PLANNING COMMISSION

The subdivision of land as shown on the annexed plat has been approved by the Planning Commission of Burleigh County, on the 12th day of February, 2003, in accordance with the laws of the State of North Dakota, ordinances of the County of Burleigh and regulations adopted by the said Planning Commission, in witness whereof are set the hands and seals of the Chairman and Secretary of the Planning Commission of Burleigh County.

[Signature]
Timothy R. Johnson - Chairman

[Signature]
Kevin J. Glatt - Secretary

APPROVAL OF BOARD OF COUNTY COMMISSIONERS

The Board of County Commissioners of Burleigh County, North Dakota, has approved the subdivision of land as shown on the annexed plat, has accepted the dedication of all streets shown thereon, has approved the grounds as shown on the annexed plat as an amendment to the master plan of Burleigh County, North Dakota, and does hereby vacate any previous platting within the boundary of the annexed plat. The foregoing action by the Board of County Commissioners of Burleigh County, North Dakota, was taken by resolution approved the 3rd day of March, 2003.

[Signature]
Claus H. Lembke - Chairman

[Signature]
Kevin J. Glatt - County Auditor

APPROVAL OF COUNTY ENGINEER

I, Jon Mill, County Engineer of Burleigh County, North Dakota, hereby approve "Giesler Subdivision" Burleigh County, North Dakota as shown on the annexed plat.

[Signature]
Jon Mill
County Engineer

OWNER'S CERTIFICATE & DEDICATION

Know all men by these presents that Larry A. Kolbo and Margo A. Kolbo, Bismarck, North Dakota, being the owners and proprietors of the property shown on the annexed plat have caused that portion described hereon to be surveyed and platted as "Giesler Subdivision", Burleigh County, North Dakota and do so dedicate streets as shown hereon including all culverts to the public use forever. They also dedicate easements to run with the land, for gas, electric, telephone or other public utilities or services on or under those certain strips of land designated hereon as "Utility Easements".

[Signature]
Larry A. Kolbo

[Signature]
Margo A. Kolbo

STATE OF NORTH DAKOTA)
SS)
COUNTY OF BURLEIGH)

On this 3th Day of April, 2003, before me personally appeared Larry A. Kolbo and Margo A. Kolbo known to me to be the persons who are described in and whose names are subscribed to the within instrument and they acknowledged to me that they executed the same.

[Signature]
KAMI K. EMINETH
KAMI K. EMINETH, Notary Public:
Burleigh County, North Dakota
My commission expires: August 1, 2006

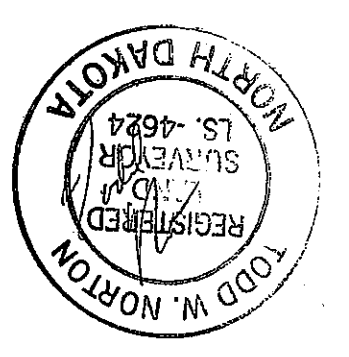
KAMI K. EMINETH
Notary Public
State of North Dakota
My Commission Expires Aug. 1, 2006

SURVEYOR'S CERTIFICATE

I, Todd W. Norton, a Registered Land Surveyor in the State of North Dakota, hereby certify the annexed plat is a true copy of the notes of a survey performed under my supervision and completed on November 27, 2002, and that all information shown hereon is true and correct to the best of my knowledge and belief.

[Signature]
Todd W. Norton
Registered Land Surveyor
N.D. Registration No. 4624

4-8-03



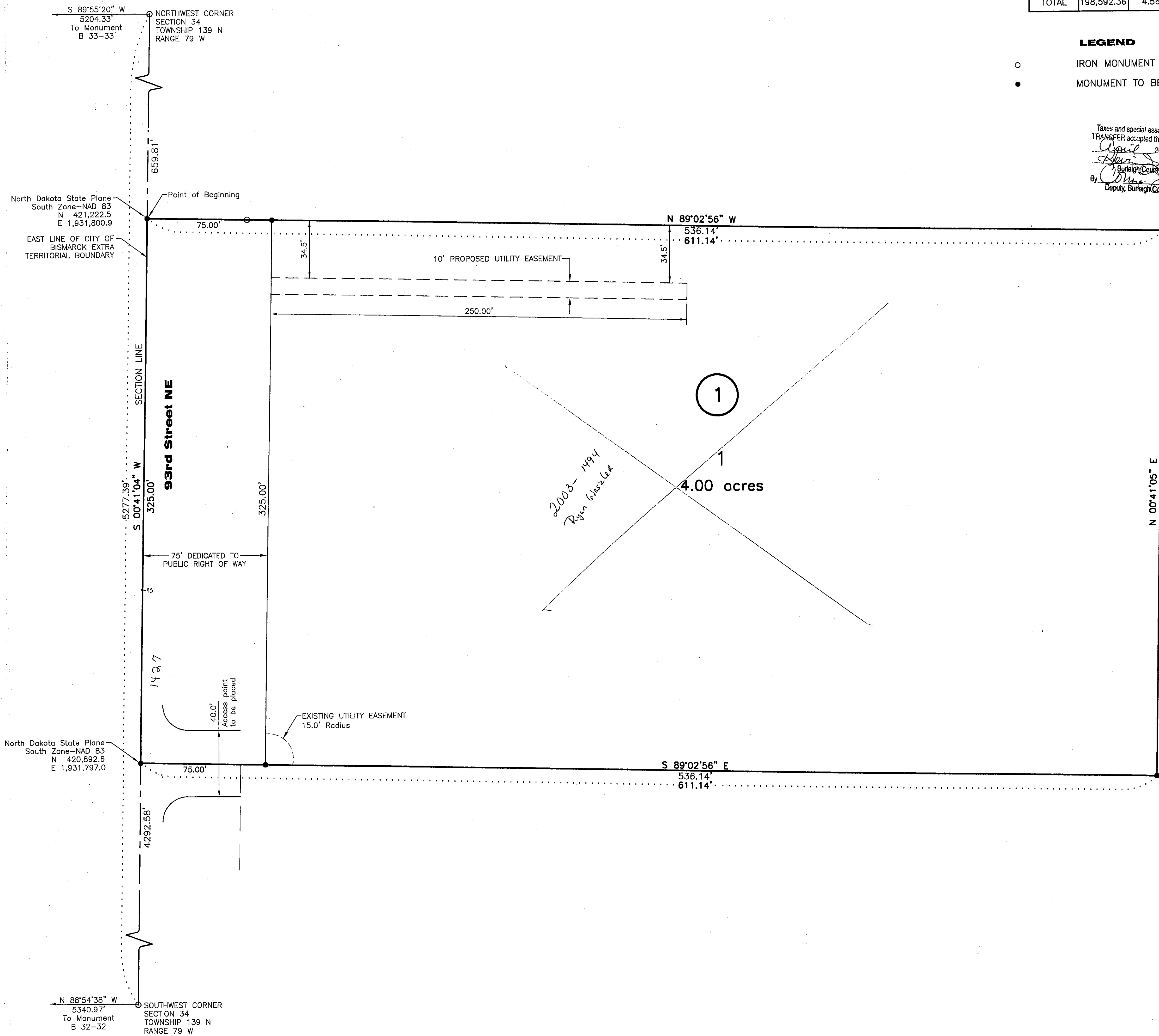
STATE OF NORTH DAKOTA)
SS)
COUNTY OF BURLEIGH)

On this 8th Day of April, 2003, before me personally appeared Todd W. Norton, known to me to be the person described in and who executed the foregoing Surveyor's Certificate and he acknowledged to me that he executed the same.

[Signature]
KAMI K. EMINETH
KAMI K. EMINETH, Notary Public:
Burleigh County, North Dakota
My commission expires: August 1, 2006

KAMI K. EMINETH
Notary Public
State of North Dakota
My Commission Expires Aug. 1, 2006

BASIS OF BEARING IS NORTH DAKOTA STATE PLANE COORDINATE SYSTEM, NAD 83 ND ZONE 3302. ALL DISTANCES ARE EXPRESSED AS GROUND DISTANCES. GROUND TO GRID COMBINED SCALE FACTOR=0.999855



Giesler Subdivision
ETA
Plat Number 2130

AES₂
Advanced Engineering and Environmental Services, Inc.
1605 E. Capitol Ave., Suite 103, Bismarck, ND
Ph: 701-221-0530 Fax: 701-221-0531 Web: www.AES2.com