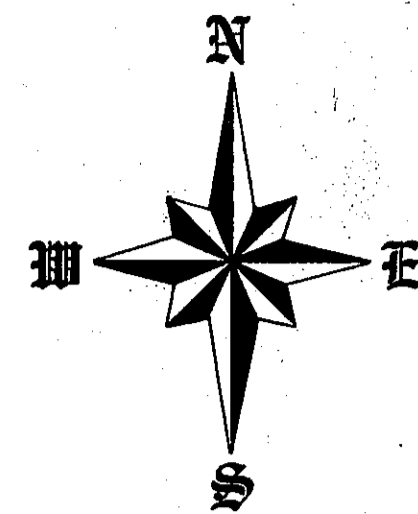


MISSOURI RIVER ESTATES SECOND SUBDIVISION

E. 1/2 S.W. 1/4 & GOVERNMENT LOTS 1, 2, 3 OF SECTION 4 T. 137 N., R. 80 W.
BURLEIGH COUNTY, NORTH DAKOTA



SCALE 1" = 100'
NOVEMBER 7, 1985

DESCRIPTION

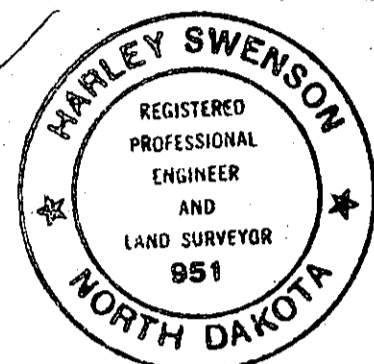
THE EAST 1/2 OF THE SOUTHWEST 1/4 AND LOTS 1, 2, AND 3 (COMPRISING THE WEST 1/2) OF SECTION 4, IN TOWNSHIP 137 NORTH, RANGE 80 WEST OF THE 5TH PRINCIPAL MERIDIAN IN BURLEIGH COUNTY, NORTH DAKOTA.
THE ABOVE DESCRIBED TRACT OF LAND CONTAINS 130 ACRES, MORE OR LESS.

SURVEYOR'S CERTIFICATE

I, HARLEY SWENSON, A REGISTERED PROFESSIONAL ENGINEER AND LAND SURVEYOR IN THE STATE OF NORTH DAKOTA HEREBY CERTIFY THAT THE ANNEXED PLAT IS A TRUE COPY OF THE NOTES OF A SURVEY PERFORMED UNDER MY SUPERVISION AND COMPLETED ON JULY 17, 1984, AND THAT ALL INFORMATION SHOWN HEREON IS TRUE AND CORRECT TO THE BEST OF MY KNOWLEDGE AND BELIEF.

SWENSON, HAGEN & CO.
CONSULTING ENGINEERS
909 BASIN AVENUE - P.O. BOX 1135
BISMARCK, NORTH DAKOTA 58502

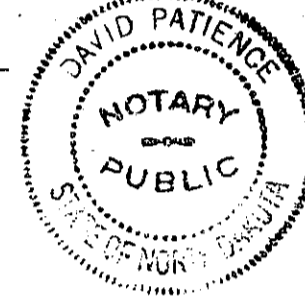
HARLEY SWENSON
REGISTERED PROFESSIONAL
ENGINEER & LAND SURVEYOR
ND REGISTRATION NO. 951



STATE OF NORTH DAKOTA }
COUNTY OF BURLEIGH } SS

ON THIS 16TH DAY OF JANUARY, 1987, BEFORE ME PERSONALLY APPEARED HARLEY SWENSON, KNOWN TO ME TO BE THE PERSON WHO EXECUTED THE FOREGOING SURVEYOR'S CERTIFICATE AND ACKNOWLEDGED TO ME THAT HE EXECUTED THE SAME.

DAVID PATIENCE - NOTARY PUBLIC
BURLEIGH COUNTY, NORTH DAKOTA
MY COMMISSION EXPIRES: 7-24-92



APPROVAL OF BOARD OF COUNTY COMMISSIONERS

THE BOARD OF COUNTY COMMISSIONERS OF BURLEIGH COUNTY, NORTH DAKOTA, HAS APPROVED THE SUBDIVISION OF LAND ON THE ANNEXED PLAT, HAS ACCEPTED THE DEDICATION OF ALL STREETS SHOWN THEREON AND HAS APPROVED THE GROUNDS AS SHOWN ON THE ANNEXED PLAT AS AN AMENDMENT TO THE MASTER PLAN OF BURLEIGH COUNTY.
THE FOREGOING ACTION OF THE BOARD OF COUNTY COMMISSIONERS OF BURLEIGH COUNTY, NORTH DAKOTA, WAS TAKEN BY RESOLUTION APPROVED THE 7TH DAY OF JANUARY, 1987.

RUSSEL STUART - CHAIRMAN

BERNICE ASBRIDGE - COUNTY AUDITOR

APPROVAL OF COUNTY PLANNING COMMISSION

THE SUBDIVISION OF LAND AS SHOWN ON THE ANNEXED PLAT HAS BEEN APPROVED BY THE PLANNING COMMISSION OF THE COUNTY OF BURLEIGH ON THE 20TH DAY OF JANUARY, 1986, IN ACCORDANCE WITH THE LAWS OF THE STATE OF NORTH DAKOTA, ORDINANCES OF BURLEIGH COUNTY, NORTH DAKOTA AND REGULATIONS ADOPTED BY SAID PLANNING COMMISSION.

JERRY WOODCOCK - CHAIRMAN

BERNICE ASBRIDGE - COUNTY AUDITOR

APPROVAL OF COUNTY ENGINEER

I, JON MILL, COUNTY ENGINEER FOR THE COUNTY OF BURLEIGH, STATE OF NORTH DAKOTA, HEREBY APPROVE "MISSOURI RIVER ESTATES SECOND SUBDIVISION" AS SHOWN ON THE ANNEXED PLAT.

JON MILL 2 Feb 87
JON MILL - COUNTY ENGINEER

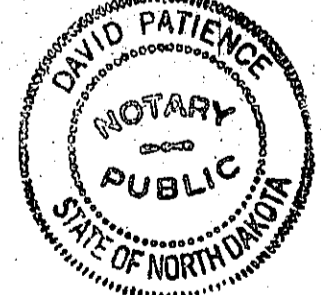
OWNERS CERTIFICATE & DEDICATION

KNOW ALL MEN BY THESE PRESENTS THAT RAYMOND W. HEINEMEYER AND MARILYN L. HEINEMEYER OF BISMARCK, NORTH DAKOTA BEING THE OWNERS AND PROPRIETORS OF THE PROPERTY SHOWN ON THE ANNEXED PLAT HAVE CAUSED THAT PORTION DESCRIBED HEREON AND SHOWN ON THE ANNEXED PLAT TO BE SURVEYED AND PLATTED AS "MISSOURI RIVER ESTATES SECOND SUBDIVISION" AND DO SO DEDICATE STREETS, INCLUDING SEWERS, CULVERTS, AND OTHER UTILITIES WHETHER SHOWN HEREON OR NOT TO THE PUBLIC USE FOREVER.
THEY ALSO DEDICATE EASEMENTS TO RUN WITH THE LAND FOR TELEPHONE, ELECTRIC, GAS OR OTHER PUBLIC UTILITIES OR SERVICES UNDER, ON OR OVER THOSE CERTAIN STRIPS OF LAND DESIGNATED HEREON AS UTILITY EASEMENTS.

RAYMOND W. HEINEMEYER
MARILYN L. HEINEMEYER

STATE OF NORTH DAKOTA }
COUNTY OF BURLEIGH } SS

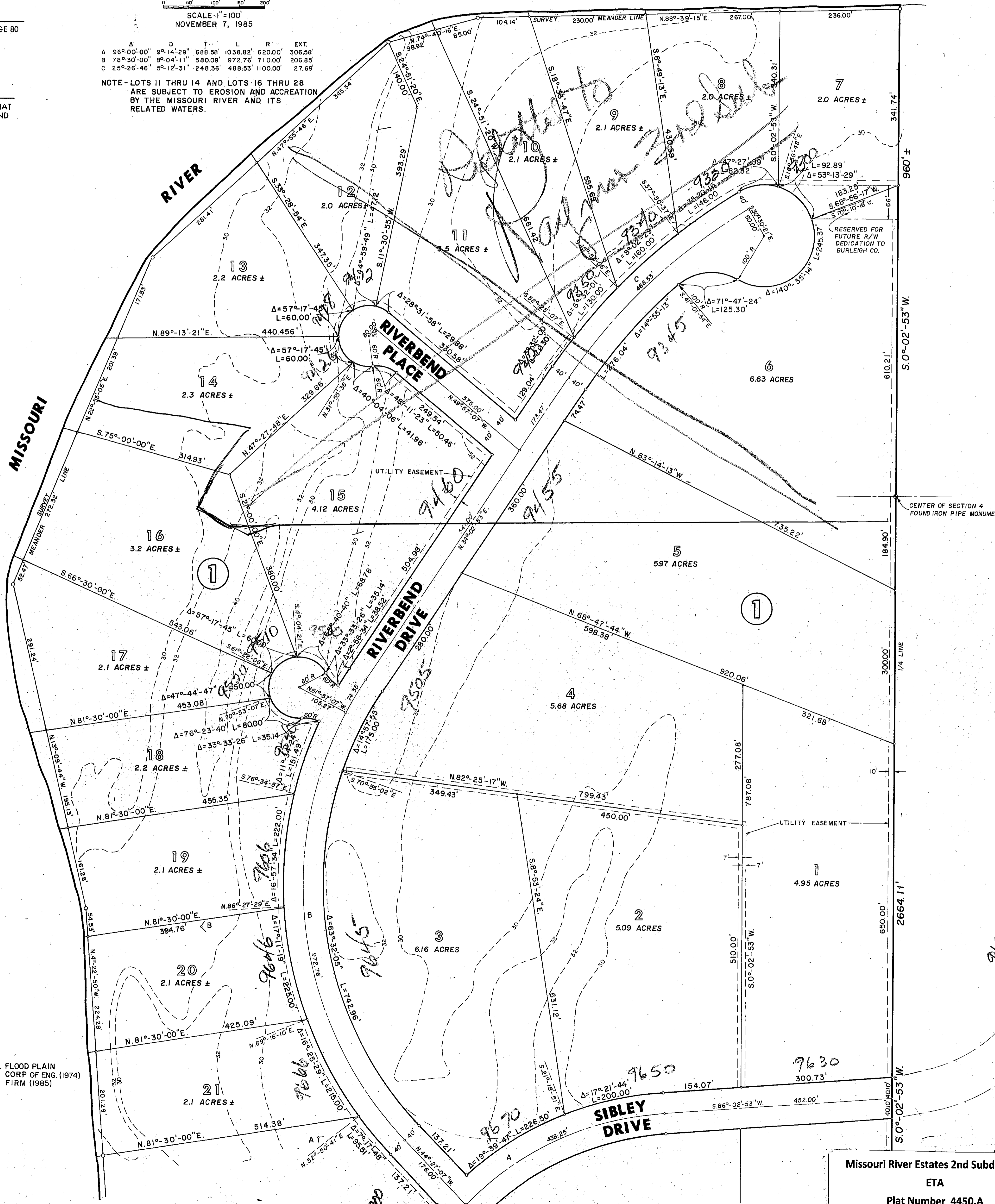
ON THIS 27TH DAY OF JANUARY 1987, BEFORE ME PERSONALLY APPEARED RAYMOND W. HEINEMEYER AND MARILYN L. HEINEMEYER KNOWN TO ME TO BE THE PERSONS WHO EXECUTED THE FOREGOING INSTRUMENT AND ACKNOWLEDGED TO ME THAT THEY EXECUTED THE SAME.



DAVID PATIENCE
NOTARY PUBLIC
BURLEIGH COUNTY, NORTH DAKOTA
MY COMMISSION EXPIRES:

DAVID PATIENCE
Notary Public, Burleigh Co., N. Dak.
My Commission Expires July 24, 1992

INTERMEDIATE REGIONAL FLOOD PLAIN
ELEV. = 1631.0 TO 1631.5 CORP OF ENG (1974)
1629.6 TO 1630.3 FIRM (1985)

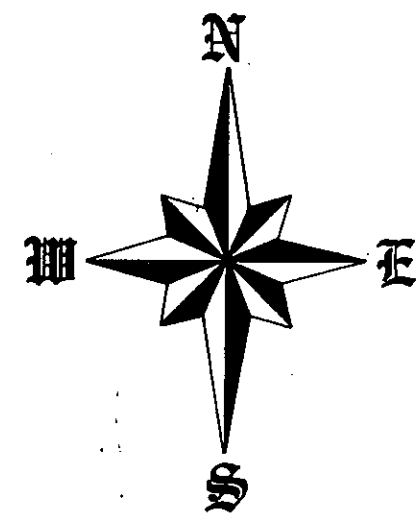


RECEIVED
MAR 26 1987
PLANNING DEPT.
BISMARCK, N. D.

Missouri River Estates 2nd Subdivision
ETA
Plat Number 4450.A

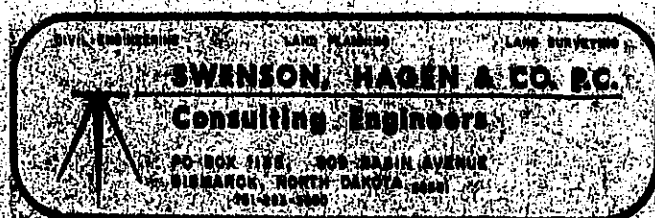
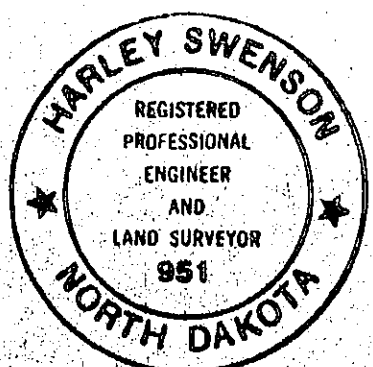
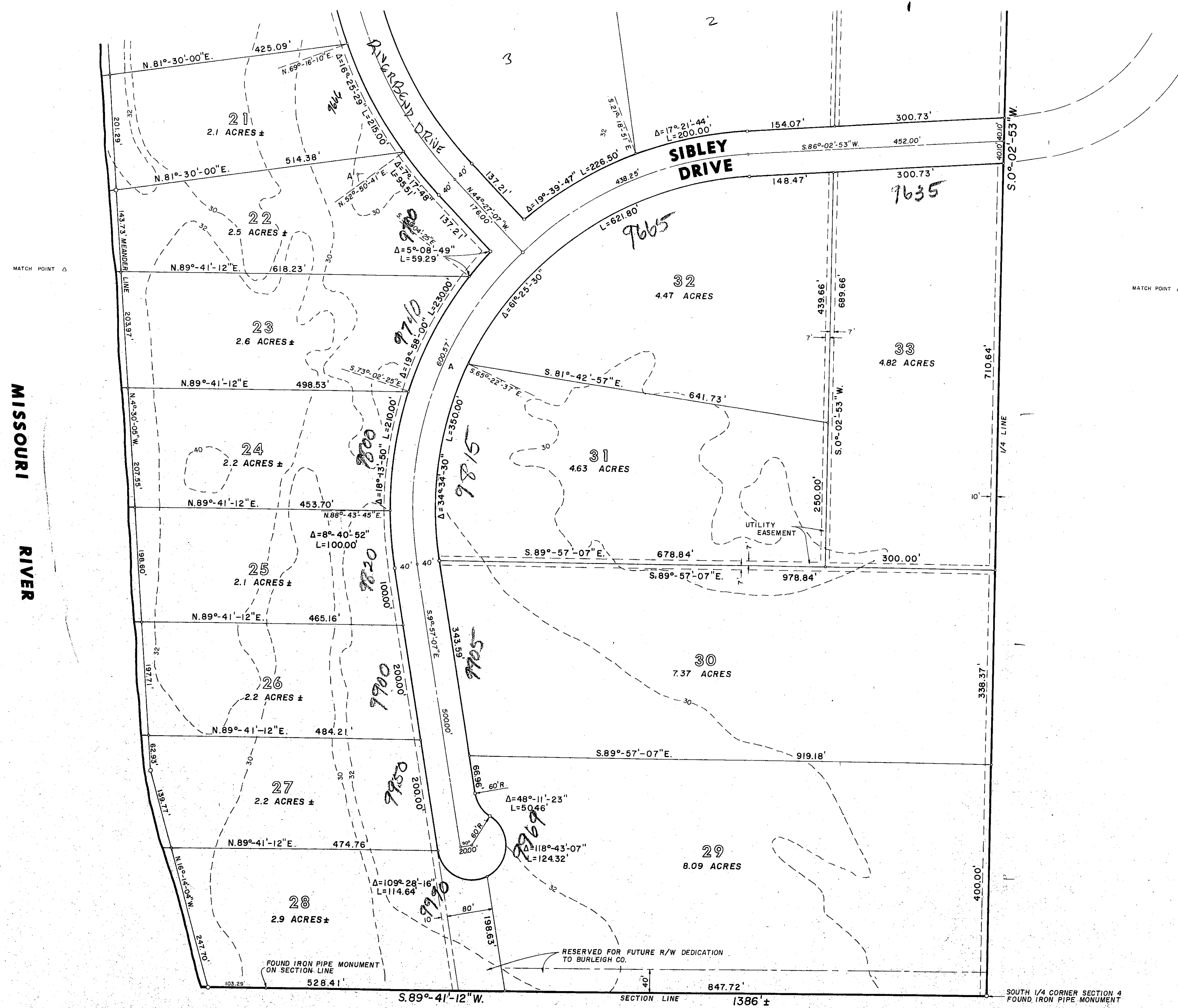
MISSOURI RIVER ESTATES SECOND SUBDIVISION

E. 1/2 S.W. 1/4 & GOVERNMENT LOTS 1, 2, 3 OF SECTION 4 T. 137 N., R. 80 W.
BURLEIGH COUNTY, NORTH DAKOTA



SCALE: 1" = 100'
NOVEMBER 7, 1985

INTERMEDIATE REGIONAL
FLOOD PLAIN ELEV. = 1631.0 TO 1631.5 CORP OF ENGINEERS (1974)
1629.6 TO 1630.3 FIRM (1985)



72-A