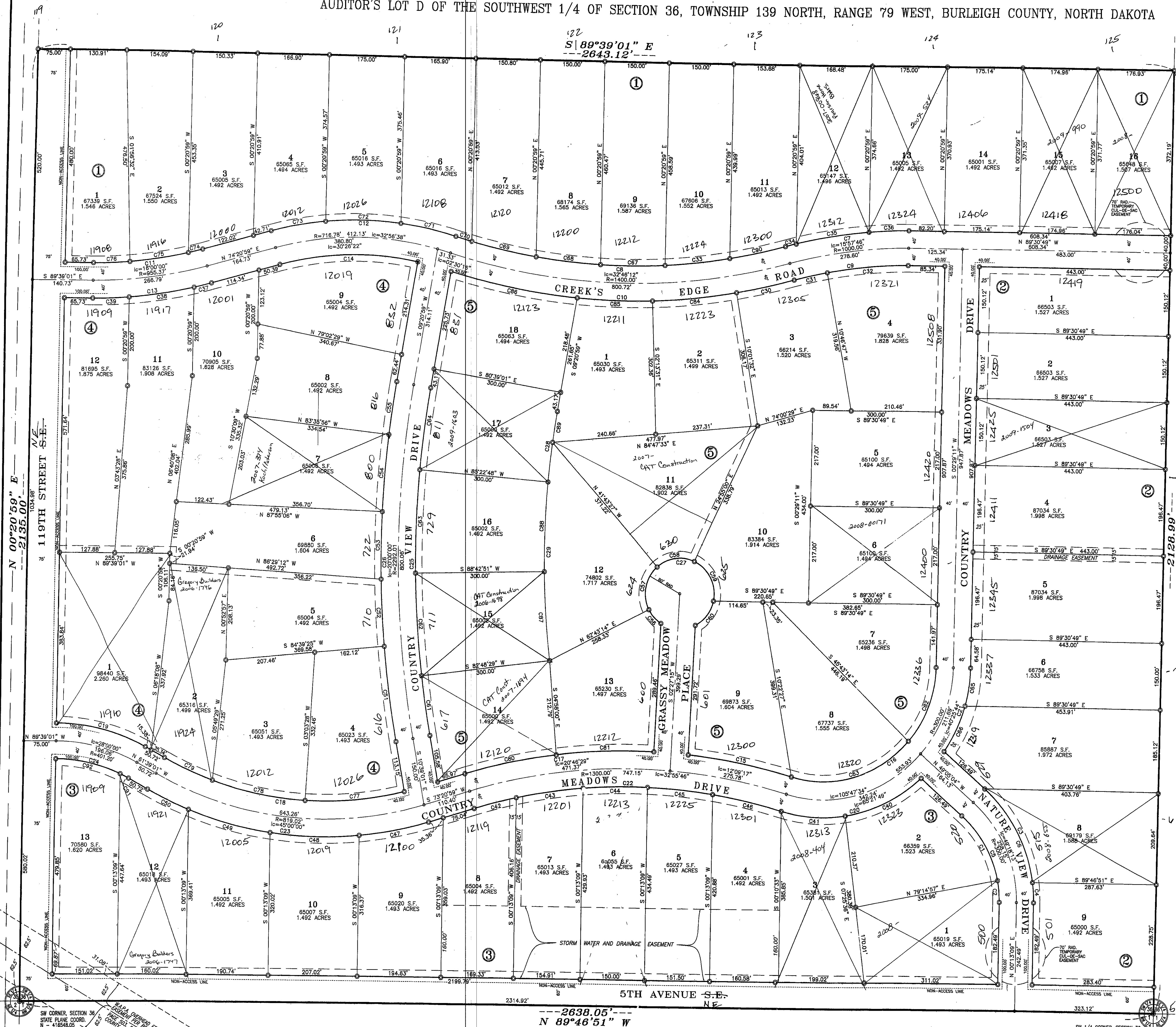


COUNTRY MEADOWS SUBDIVISION

AUDITOR'S LOT D OF THE SOUTHWEST 1/4 OF SECTION 36, TOWNSHIP 139 NORTH, RANGE 79 WEST, BURLEIGH COUNTY, NORTH DAKOTA

ENGINEER:
KADRMAS, LEE & JACKSON, INC
128 500 LINE DR.
PO BOX 1157
BISMARCK, NORTH DAKOTA
58502-1157
PHONE 355-8400

OWNER:
APPLE CREEK, LLP
651 119TH ST.
MENOKEN, ND
PHONE 258-5199



DESCRIPTION

AUDITOR'S LOT D OF THE SOUTHWEST 1/4 OF SECTION 36, TOWNSHIP 139 NORTH, RANGE 79 WEST, BURLEIGH COUNTY, NORTH DAKOTA MORE PARTICULARLY DESCRIBED AS FOLLOWS:

COMMENCING AT THE SOUTHWEST CORNER OF SAID SECTION 36, WHICH IS THE POINT OF BEGINNING; THENCE FROM THE SAID POINT OF BEGINNING ALONG THE WEST LINE OF SAID SOUTHWEST 1/4, N 00°20'59" E, 2135.00 FEET; THENCE S 89°39'01" E, 2643.12' FEET TO THE EAST LINE OF SAID SOUTHWEST 1/4; THENCE ALONG SAID EAST LINE, S 00°29'11" W, 2128.99 FEET TO THE SOUTH LINE OF SAID SOUTHWEST 1/4; THENCE ALONG SAID SOUTH LINE, N 89°46'51" W, 2638.05 FEET TO THE SAID POINT OF BEGINNING.

SAID TRACT CONTAINS 5,629,692 SQUARE FEET OR 129.240 ACRES MORE OR LESS.

OWNER'S CERTIFICATE AND DEDICATION

KNOW ALL MEN BY THESE PRESENTS THAT APPLE CREEK, LLP BEING THE OWNERS AND PROPRIETORS OF THE PROPERTY SHOWN ON THE ANNEXED PLAT HAVE CAUSED THAT PORTION DESCRIBED HEREON TO BE SURVEYED AND PLATTED AS 'COUNTRY MEADOWS SUBDIVISION' TO BE THE COUNTY OF BURLEIGH, NORTH DAKOTA AND DO SO DEDICATE STREETS AS SHOWN HEREON INCLUDING ALL SEWER, CULVERTS, WATER AND GAS DISTRIBUTION LINES AND OTHER PUBLIC UTILITY LINES, WHETHER SHOWN HEREON OR NOT, TO THE PUBLIC USE FOREVER.

THEY ALSO DEDICATE EASEMENTS TO RUN WITH THE LAND, FOR GAS, ELECTRIC, TELEPHONE, STORM WATER AND OTHER PUBLIC UTILITIES OR SERVICES ON, ACROSS OR UNDER THOSE CERTAIN STRIPS OF LAND DESIGNATED HEREON.

ON THIS 19th DAY OF JUNE, 2006, BEFORE ME PERSONALLY APPEARED STEVE MARINER, KNOWN TO ME TO BE THE PERSON DESCRIBED IN AND WHO EXECUTED THE WITHIN CERTIFICATE AND HE ACKNOWLEDGE TO ME THAT HE EXECUTED THE SAME.

STATE OF NORTH DAKOTA) **DAKON JORGENSEN**
COUNTY OF BURLEIGH) Notary Public
My Commission Expires Feb. 17, 2010

BURLEIGH COUNTY, NORTH DAKOTA
MY COMMISSION EXPIRES 2-12-2010

APPROVAL OF COUNTY PLANNING COMMISSION

THE SUBDIVISION OF LAND AS SHOWN ON THE ANNEXED PLAT HAS BEEN APPROVED BY THE PLANNING COMMISSION OF THE COUNTY OF BURLEIGH, ON THE 9th DAY OF March, 2006, IN ACCORDANCE WITH THE LAWS OF THE STATE OF NORTH DAKOTA, ORDINANCES OF THE COUNTY OF BURLEIGH, AND REGULATIONS ADOPTED BY THE SAID PLANNING COMMISSION, IN WITNESS WHEREOF ARE SET THE HANDS AND SEALS OF THE CHAIRMAN AND SECRETARY OF THE PLANNING COMMISSION OF THE COUNTY OF BURLEIGH.

Charles Peterson - CHAIRMAN
Kevin Glatt - SECRETARY

APPROVAL OF BOARD OF COUNTY COMMISSIONERS

THE BOARD OF COUNTY COMMISSIONERS OF THE COUNTY OF BURLEIGH, NORTH DAKOTA HAS APPROVED THE SUBDIVISION OF LAND AS SHOWN ON THE ANNEXED PLAT, HAS ACCEPTED THE DEDICATION OF ALL STREETS SHOWN THEREON, HAS APPROVED THE GROUNDS AS SHOWN ON THE ANNEXED PLAT AS AN AMENDMENT TO THE MASTER PLAN OF THE COUNTY OF BURLEIGH, NORTH DAKOTA.

THE FOREGOING ACTION OF THE COUNTY COMMISSIONERS OF BURLEIGH, NORTH DAKOTA WAS TAKEN BY RESOLUTION APPROVED THE 3rd DAY OF April, 2006.

Paul R. Schmitt - CHAIRPERSON
Kevin Glatt - COUNTY AUDITOR

APPROVAL OF COUNTY ENGINEER

I, JON MILL, COUNTY ENGINEER OF THE COUNTY OF BURLEIGH, NORTH DAKOTA, HEREBY APPROVE 'COUNTRY MEADOWS SUBDIVISION', BURLEIGH COUNTY, NORTH DAKOTA AS SHOWN ON THE ANNEXED PLAT.

Jon Mill 24 Aug 2006
COUNTY ENGINEER

SURVEYOR'S CERTIFICATE

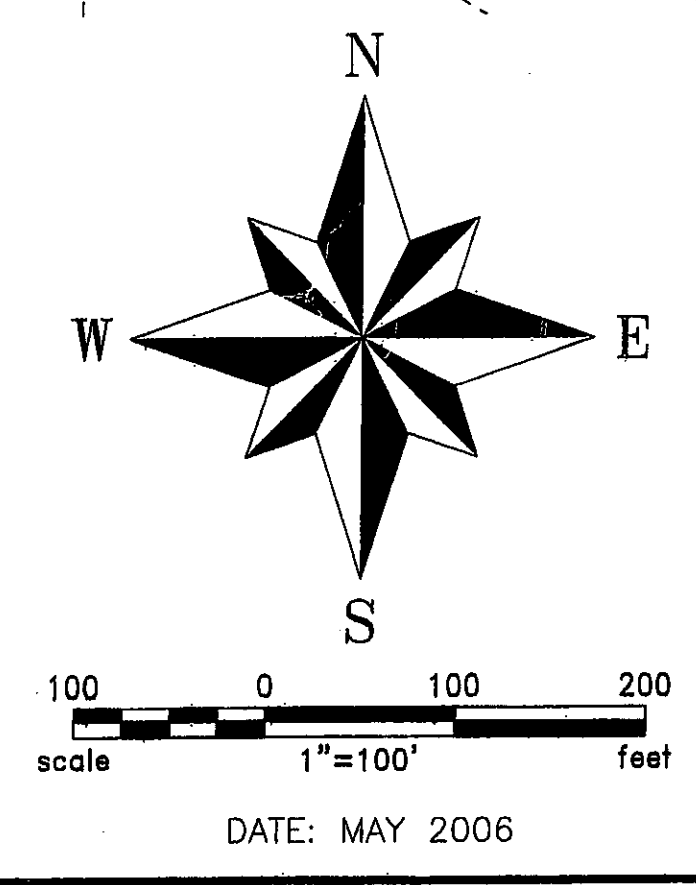
I, KENT A. ORVIK, A REGISTERED PROFESSIONAL LAND SURVEYOR IN THE STATE OF NORTH DAKOTA, HEREBY CERTIFY THAT THE ANNEXED PLAT IS A TRUE COPY OF THE NOTES OF A SURVEY PERFORMED UNDER MY SUPERVISION AND COMPLETED ON THE 12TH DAY OF MAY, 2005, AND THAT ALL INFORMATION SHOWN HEREON IS TRUE AND CORRECT TO THE BEST OF MY KNOWLEDGE AND BELIEF.

Kent A. Orvik
REGISTERED PROFESSIONAL LAND SURVEYOR
N.D. REGISTRATION NO. 3463

STATE OF NORTH DAKOTA) **DAKON JORGENSEN**
COUNTY OF BURLEIGH) Notary Public
My Commission Expires Feb. 17, 2010

ON THIS 19th DAY OF JUNE, 2006, BEFORE ME PERSONALLY APPEARED KENT A. ORVIK, KNOWN TO ME TO BE THE PERSON DESCRIBED IN AND WHO EXECUTED THE WITHIN CERTIFICATE AND HE ACKNOWLEDGE TO ME THAT HE EXECUTED THE SAME.

Burleigh County, North Dakota
MY COMMISSION EXPIRES 2-12-2010



CURVE TABLE

NUMBER	DELTA ANGLE	FRADIUS	ARC LENGTH	NUMBER	DELTA ANGLE	FRADIUS	ARC LENGTH
C01	38°12'21"	260.00	173.48	C29	09°54'22"	2292.01	233.18
C02	11°13'36"	260.00	50.06	C30	09°54'22"	2292.01	233.18
C03	14°19'03"	340.00	246.17	C31	09°54'22"	2292.01	233.18
C04	07°49'13"	340.00	266.79	C32	09°54'22"	2292.01	233.18
C05	14°49'18"	340.00	223.33	C33	09°54'22"	2292.01	233.18
C06	08°07'06"	1040.00	282.29	C34	09°54'22"	2292.01	233.18
C07	37°48'15"	1040.00	189.70	C35	09°54'22"	2292.01	233.18
C08	37°48'15"	1040.00	189.70	C36	09°54'22"	2292.01	233.18
C09	15°09'46"	360.00	267.46	C37	09°54'22"	2292.01	233.18
C10	15°09'46"	360.00	267.46	C38	09°54'22"	2292.01	233.18
C11	18°00'00"	913.37	258.62	C39	09°54'22"	2292.01	233.18
C12	18°00'00"	913.37	258.62	C40	09°54'22"	2292.01	233.18
C13	18°00'00"	913.37	258.62	C41	09°54'22"	2292.01	233.18
C14	18°00'00"	913.37	258.62	C42	09°54'22"	2292.01	233.18
C15	18°00'00"	913.37	258.62	C43	09°54'22"	2292.01	233.18
C16	18°00'00"	913.37	258.62	C44	09°54'22"	2292.01	233.18
C17	18°00'00"	913.37	258.62	C45	09°54'22"	2292.01	233.18
C18	18°00'00"	913.37	258.62	C46	09°54'22"	2292.01	233.18
C19	18°00'00"	913.37	258.62	C47	09°54'22"	2292.01	233.18
C20	18°00'00"	913.37	258.62	C48	09°54'22"	2292.01	233.18
C21	18°00'00"	913.37	258.62	C49	09°54'22"	2292.01	233.18
C22	18°00'00"	913.37	258.62	C50	09°54'22"	2292.01	233.18
C23	18°00'00"	913.37	258.62	C51	09°54'22"	2292.01	233.18
C24	18°00'00"	913.37	258.62	C52	09°54'22"	2292.01	233.18
C25	18°00'00"	913.37	258.62	C53	09°54'22"	2292.01	233.18
C26	18°00'00"	913.37	258.62	C54	09°54'22"	2292.01	233.18
C27	18°00'00"	913.37	258.62	C55	09°54'22"	2292.01	233.18
C28	18°00'00"	913.37	258.62	C56	09°54'22"	2292.01	233.18
C29	18°00'00"	913.37	258.62	C57	09°54'22"	2292.01	233.18
C30	18°00'00"	913.37	258.62	C58	09°54'22"	2292.01	233.18
C31	18°00'00"	913.37	258.62	C59	09°54'22"	2292.01	233.18
C32	18°00'00"	913.37	258.62	C60	09°54'22"	2292.01	233.18
C33	18°00'00"	913.37	258.62	C61	09°54'22"	2292.01	233.18
C34	18°00'00"	913.37	258.62	C62	09°54'22"	2292.01	233.18
C35	18°00'00"	913.37	258.62	C63	09°54'22"	2292.01	233.18
C36	18°00'00"	913.37	258.62	C64	09°54'22"	2292.01	233.18
C37	18°00'00"	913.37	258.62	C65	09°54'22"	2292.01	233.18
C38	18°00'00"	913.37	258.62	C66	09°54'22"	2292.01	233.18
C39	18°00'00"	913.37	258.62	C67	09°54'22"	2292.01	233.18
C40	18°00'00"	913.37	258.62	C68	09°54'22"	2292.01	233.18
C41	18°00'00"	913.37	258.62	C69	09°54'22"	2292.01	233.18
C42	18°00'00"	913.37	258.62	C70	09°54'22"	2292.01	233.18
C43	18°00'00"	913.37	258.62	C71	09°54'22"	2292.01	233.18
C44	18°00'00"	913.37	258.62	C72	09°54'22"	2292.01	233.18
C45	18°00'00"	913.37	258.62	C73	09°54'22"	2292.01	233.18
C46	18°00'00"	913.37	258.62	C74	09°54'22"	2292.01	233.18
C47	18°00'00"	913.37	258.62	C75	09°54'22"	2292.01	233.18
C48	18°00'00"	913.37	258.62	C76	09°54'22"	2292.01	233.18
C49	18°00'00"	913.37	258.62	C77	09°54'22"	2292.01	233.18
C50	18°00'00"	913.37	258.62	C78	09°54'22"	2292.01	233.18
C51	18°00'00"	913.37	258.62	C79	09°54'22"	2292.01	233.18
C52	18°00'00"	913.37	258.62	C80	09°54'22"	2292.01	233.18
C53	18°00'00"	913.37	258.62	C81	09°54'22"	2292.01	233.18
C54	18°00'00"	913.37	258.62	C82	09°54'22"	2292.01	233.18
C55	18°00'00"	913.37	258.62	C83	09°54'22"	2292.01	233.18
C56	18°00'00"	913.37	258.62	C84	09°54'22"	2292.01	233.18
C57	18°00'00"	913.37	258.62	C85	09°54'22"	2292.01	233.18
C58	18°00'00"	913.37	258.62	C86	09°54'22"	2292.01	233.18
C59	18°00'00"	913.37	258.62	C87	09°54'22"	2292.01	233.18
C60	18°00'00"	913.37	258.62	C88	09°54'22"	2292.01	233.18
C61	18°00'00"	913.37	258.62	C89	09°54'22"	2292.01	233.18
C62	18°00'00"	913.37	258.62	C90	09°54'22"	2292.01	233.18
C63	18°00'00"	913.37	258.62	C91	09°54'22"	2292.01	233.18
C64	18°00'00"	913.37	258.62	C92	09°54'22"	2292.01	233.18
C65	18°00'00"	913.37	258.62	C93	09°54'22"	2292.01	233.18
C66	18°00'00"	913.37	258.62	C94	09°54'22"	2292.01	233.18
C67	18°00'00"	913.37	258.62	C95	09°54'22"	2292.01	233.18
C68	18°00'00"	913.37	258.62	C96	09°54'22"	2292.01	233.18
C69	18°00'00"	913.37	258.62	C97	09°54'22"	2292.01	233.18
C70	18°00'00"	913.37	258.62	C98	09°54'22"	2292.01	233.18
C71	18°00'00"	913.37	258.62	C99	09°54'22"	2292.01	233.18
C72	18°00'00"	913.37	258.62	C100	09°54'22"	2292.01	233.18

PLAT LEGEND

- DENOTES MONUMENT FOUND
- DENOTES LOT CORNERS
- - - DENOTES EASEMENT LINE
- DENOTES NON-ACCESS LINE

PLAT INFORMATION

66 LOTS - 5 BLOCKS
LOT ACREAGE - 107.173 ACRES
STREET ACREAGE - 22.067 ACRES
TOTAL ACREAGE - 129.240 ACRES

NOTE:

UTILITY EASEMENTS SHOWN HEREON ARE 15 FEET IN WIDTH AND PARALLEL TO LOT LINES UNLESS OTHERWISE NOTED.

NOTE WESTERN AREA POWER ADMINISTRATIONS OWNS AND OPERATES A TRANSMISSION LINE ACROSS THE AREA SHOWN ON THE PLAT. CERTAIN RESTRICTIONS APPLY TO THE EASEMENT AREA WHICH IS 125 FEET WIDE (62.5 FEET ON EACH SIDE OF THE CENTERLINE).

MORE INFORMATION CONTACT WESTERN AREA POWER ADMINISTRATION, P.O. BOX 1173, BISMARCK, ND 58502, OR 1-800-422-0828.

Country Meadows Subdivision
ETA County
Plat Number 1160

Kadmas Lee & Jackson
Engineers, Surveyors and Planners

COUNTRY MEADOWS SUBDIVISION

AUG 29 2006