

NOTE: RESTRICTED USE ON STORM WATER EASEMENT
 STORM WATER EASEMENTS ARE CONSTRUCTED TO COLLECT, STORE, CONVEY, AND/OR TREAT STORM WATER RUNOFF. THEY ARE CONSTRUCTED TO PREVENT OR LIMIT FLOOD DAMAGE AND ENVIRONMENTAL IMPACTS TO PROPERTIES BOTH WITHIN AND OUTSIDE OF THE PLAT. PROPERTY OWNERS SHALL NOT PLACE ANY TYPE OF FILL MATERIAL OR MAKE ANY ALTERATIONS TO THE PERMANENT VEGETATED COVER ON THE EASEMENT (NO OPEN TILLED SOIL AREAS WILL BE ALLOWED). THEY SHALL NOT PLANT ANY TREES OR SHRUBS WITHIN THE EASEMENT WITH THE INTENT TO SCREEN OR PROVIDE A SNOW SHELTER BELT. INDIVIDUAL TREES AND SHRUBS PROPERTY OWNERS SHALL NOT CONSTRUCT ANY TYPE OF STRUCTURE (INCLUDING GARAGES, OUTBUILDINGS, SHEDS, DRIVEWAYS, PARKING PADS, LANDSCAPING, GARDENS, AND SEPTIC FIELDS) OR OTHER FEATURES THAT INTERFERE WITH THE INTENDED USE OF THE STORM WATER EASEMENT.

AREA DATA

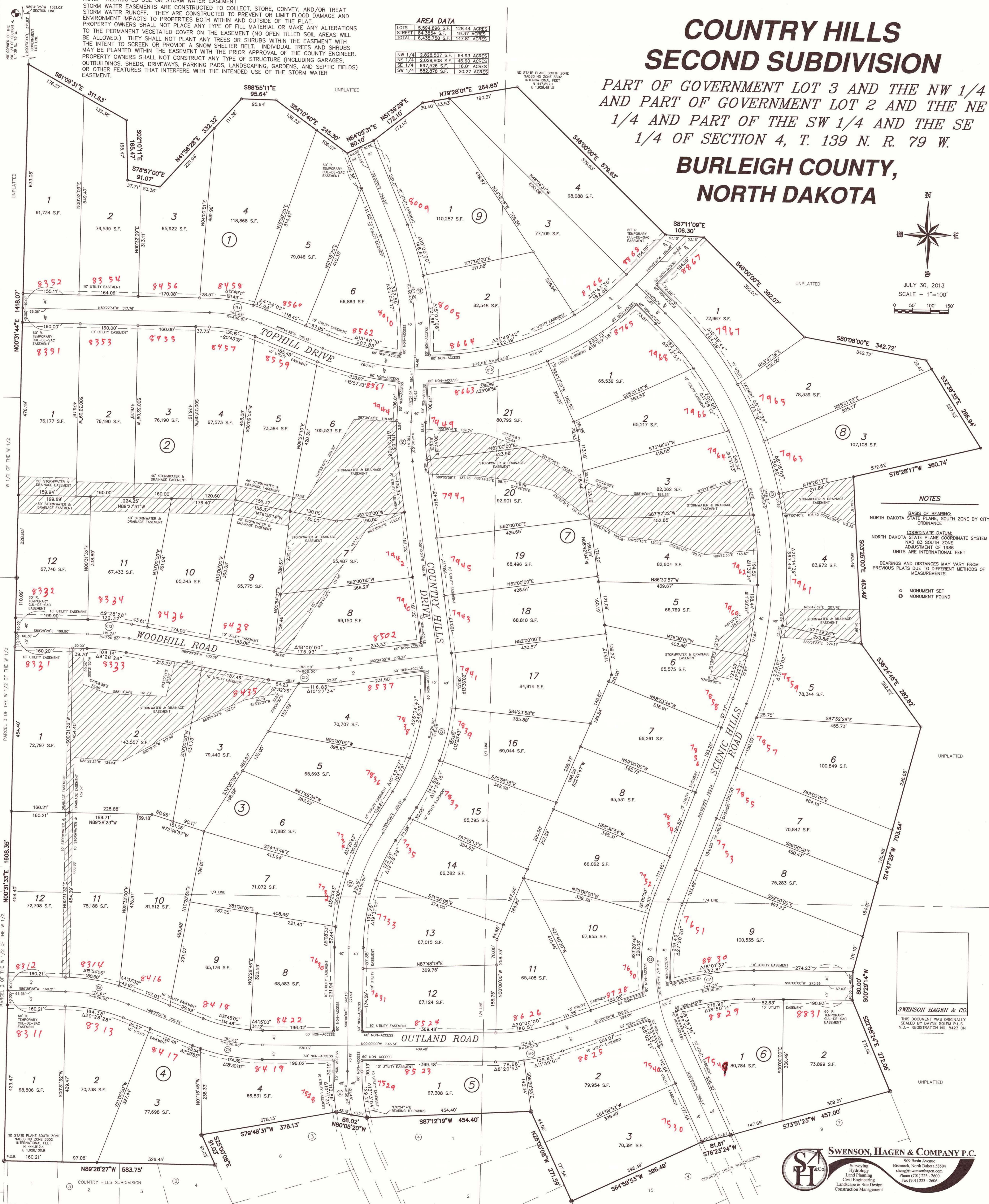
LOTS	5,394,888 S.F.	128.44 ACRES
STREET	84,354 S.F.	19.37 ACRES
TOTAL	6,438,750 S.F.	147.81 ACRES

NW 1/4	2,828,537 S.F.	64.93 ACRES
NE 1/4	2,029,808 S.F.	46.60 ACRES
SE 1/4	687,248 S.F.	16.01 ACRES
SW 1/4	895,157 S.F.	20.27 ACRES

COUNTRY HILLS SECOND SUBDIVISION

PART OF GOVERNMENT LOT 3 AND THE NW 1/4 AND PART OF GOVERNMENT LOT 2 AND THE NE 1/4 AND PART OF THE SW 1/4 AND THE SE 1/4 OF SECTION 4, T. 139 N. R. 79 W.

BURLEIGH COUNTY, NORTH DAKOTA



NOTES

BASIS OF BEARING:
 NORTH DAKOTA STATE PLANE, SOUTH ZONE BY CITY ORDINANCE

COORDINATE DATUM:
 NORTH DAKOTA STATE PLANE COORDINATE SYSTEM
 NAD 83 SOUTH ZONE
 ADJUSTMENT OF 1989
 UNITS ARE INTERNATIONAL FEET

BEARINGS AND DISTANCES MAY VARY FROM PREVIOUS PLATS DUE TO DIFFERENT METHODS OF MEASUREMENTS.

○ MONUMENT SET
 ○ MONUMENT FOUND

SWENSON HAGEN & CO
 THIS DOCUMENT WAS ORIGINALLY SEALED BY DANE SOLEM P.L.S. N.D. - REGISTRATION NO. 8423-04

SWENSON, HAGEN & COMPANY P.C.

909 Basin Avenue
 Bismarck, North Dakota 58504
 shen@swensohagen.com
 Phone (701) 223-2600
 Fax (701) 223-2606

Surveying
 Hydrology
 Land Planning
 Civil Engineering
 Landscape & Site Design
 Construction Management