

BERG SUBDIVISION

Part Of Government Lot 2 Of Section 2, T. 137 N., R. 80 W.

Burleigh County, North Dakota

DESCRIPTION

TOWNSHIP ONE HUNDRED THIRTY-SEVEN NORTH (T. 137 N.), RANGE EIGHTY WEST (R. 80 W.) NORTH DAKOTA, THAT LIES WITHIN AND IS BOUNDED BY THE FOLLOWING DESCRIBED TRAVERSE: ...

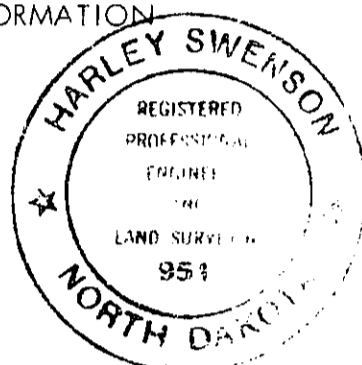
SURVEYOR'S CERTIFICATE

I, HARLEY SWENSON, A REGISTERED PROFESSIONAL ENGINEER AND LAND SURVEYOR IN THE STATE OF NORTH DAKOTA, HEREBY CERTIFY THAT THE ANNEXED PLAT IS A TRUE COPY OF THE NOTES OF A SURVEY PERFORMED UNDER MY SUPERVISION AND COMPLETED ON JULY 6, 1979 AND THAT ALL INFORMATION SHOWN HEREON IS TRUE AND CORRECT TO THE BEST OF MY KNOWLEDGE AND BELIEF.

SWENSON, HAGEN & CO.
909 BASIN AVENUE
P.O. BOX 1135
BISMARCK, N.D. 58501

STATE OF NORTH DAKOTA)
COUNTY OF BURLEIGH) 55

Harley Swenson
HARLEY SWENSON
REGISTERED PROFESSIONAL ENGINEER
AND LAND SURVEYOR
N.D. REG. NO. 951



ON THIS DAY OF February, 1980, BEFORE ME PERSONALLY APPEARED HARLEY SWENSON, KNOWN TO ME TO BE THE PERSON WHO EXECUTED THE FOREGOING SURVEYOR'S CERTIFICATE AND HE ACKNOWLEDGED TO ME THAT HE EXECUTED THE SAME.

Edward W. Hagen
EDWARD W. HAGEN, NOTARY PUBLIC
BURLEIGH COUNTY, NORTH DAKOTA
MY COMMISSION EXPIRES: 7-9-81



APPROVAL OF BOARD OF COUNTY COMMISSIONERS

THE BOARD OF COUNTY COMMISSIONERS OF BURLEIGH COUNTY, NORTH DAKOTA HAS APPROVED THE SUBDIVISION OF LAND AS SHOWN ON THE ANNEXED PLAT, HAS ACCEPTED THE DEDICATION OF ALL STREETS SHOWN THEREON AND HAS APPROVED THE GROUNDS AS SHOWN ON THE ANNEXED PLAT AS AN AMENDMENT TO THE MASTER PLAN OF BURLEIGH COUNTY, NORTH DAKOTA.

THE FOREGOING ACTION OF THE BOARD OF COUNTY COMMISSIONERS OF BURLEIGH COUNTY, NORTH DAKOTA, WAS TAKEN BY RESOLUTION APPROVED THE 7th DAY OF November, 1979.

Elmer Klipstein
ELMER KLIPSTEIN, CHAIRMAN

Bernice Asbridge
BERNICE ASBRIDGE, COUNTY AUDITOR

COUNTY PLANNING COMMISSION APPROVAL

THE SUBDIVISION OF LAND AS SHOWN ON THE ANNEXED PLAT HAS BEEN APPROVED BY THE PLANNING COMMISSION OF THE COUNTY OF BURLEIGH, ON THE 18th DAY OF February, 1980 IN ACCORDANCE WITH THE LAWS OF THE STATE OF NORTH DAKOTA, ORDINANCES OF BURLEIGH COUNTY, NORTH DAKOTA AND REGULATIONS ADOPTED BY SAID PLANNING COMMISSION. IN WITNESS WHEREOF ARE SET THE HANDS AND SEALS OF THE CHAIRMAN AND SECRETARY OF THE SAID PLANNING COMMISSION.

Duane Bohrer
DUANE BOHRER, CHAIRMAN

Bernice Asbridge
BERNICE ASBRIDGE, COUNTY AUDITOR

APPROVAL OF COUNTY ENGINEER

I, JON K. JENNINGS, COUNTY ENGINEER FOR THE COUNTY OF BURLEIGH, STATE OF NORTH DAKOTA, HEREBY APPROVE "BERG SUBDIVISION" AS SHOWN ON THE ANNEXED PLAT.

Jon K. Jennings
JON K. JENNINGS, COUNTY ENGINEER

OWNERS CERTIFICATE AND DEDICATION

KNOW ALL MEN BY THESE PRESENTS THAT ANARD V. BERG AND MARIAN D. BERG, BEING THE OWNERS AND PROPRIETORS OF THE PROPERTY SHOWN ON THE ANNEXED PLAT HAVE CAUSED THAT PORTION DESCRIBED HEREON AND SHOWN ON THE ANNEXED PLAT TO BE SURVEYED AND PLATTED AS "BERG SUBDIVISION", AND DOES SO DEDICATE STREETS AS SHOWN HEREON.

THEY ALSO DEDICATE EASEMENTS, TO RUN WITH THE LAND, FOR WATER, SEWER, GAS, ELECTRIC, TELEPHONE, OR OTHER PUBLIC UTILITIES OR SERVICES UNDER THOSE CERTAIN STRIPS OF LAND DESIGNATED HEREON AS "UTILITY EASEMENTS".

Anard V. Berg
ANARD V. BERG

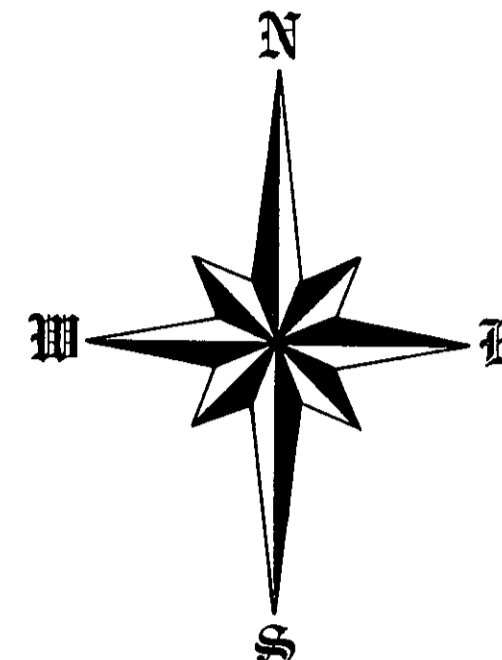
Marian D. Berg
MARIAN D. BERG

STATE OF NORTH DAKOTA)
COUNTY OF BURLEIGH) 55

ON THIS DAY OF April, 1980, BEFORE ME PERSONALLY APPEARED ANARD V. BERG AND MARIAN D. BERG, KNOWN TO ME TO BE THE PERSONS DESCRIBED IN AND WHO EXECUTED THE WITHIN INSTRUMENT AND ACKNOWLEDGED TO ME THAT THEY EXECUTED THE SAME.



David Patience
DAVID PATIENCE, NOTARY PUBLIC
BURLEIGH COUNTY, NORTH DAKOTA
MY COMMISSION EXPIRES: 7-24-80



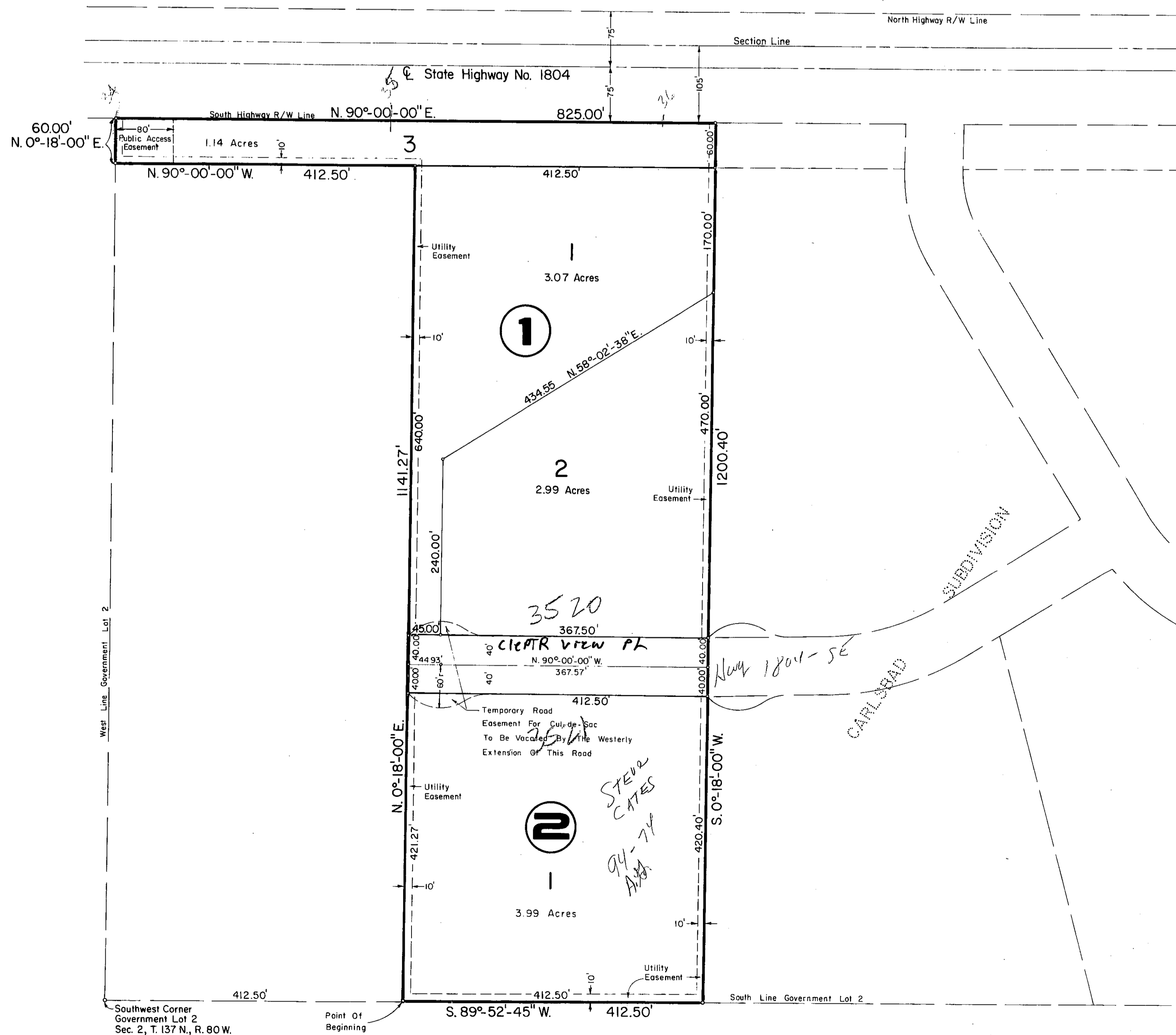
0' 100' 200' 300'

SCALE - 1" = 100'

DATE - SEPTEMBER 20, 1979

NOTES

(1) * Denotes Iron Pipe Monument To Be Set.



Berg Subdivision
ETA
Plat Number 450