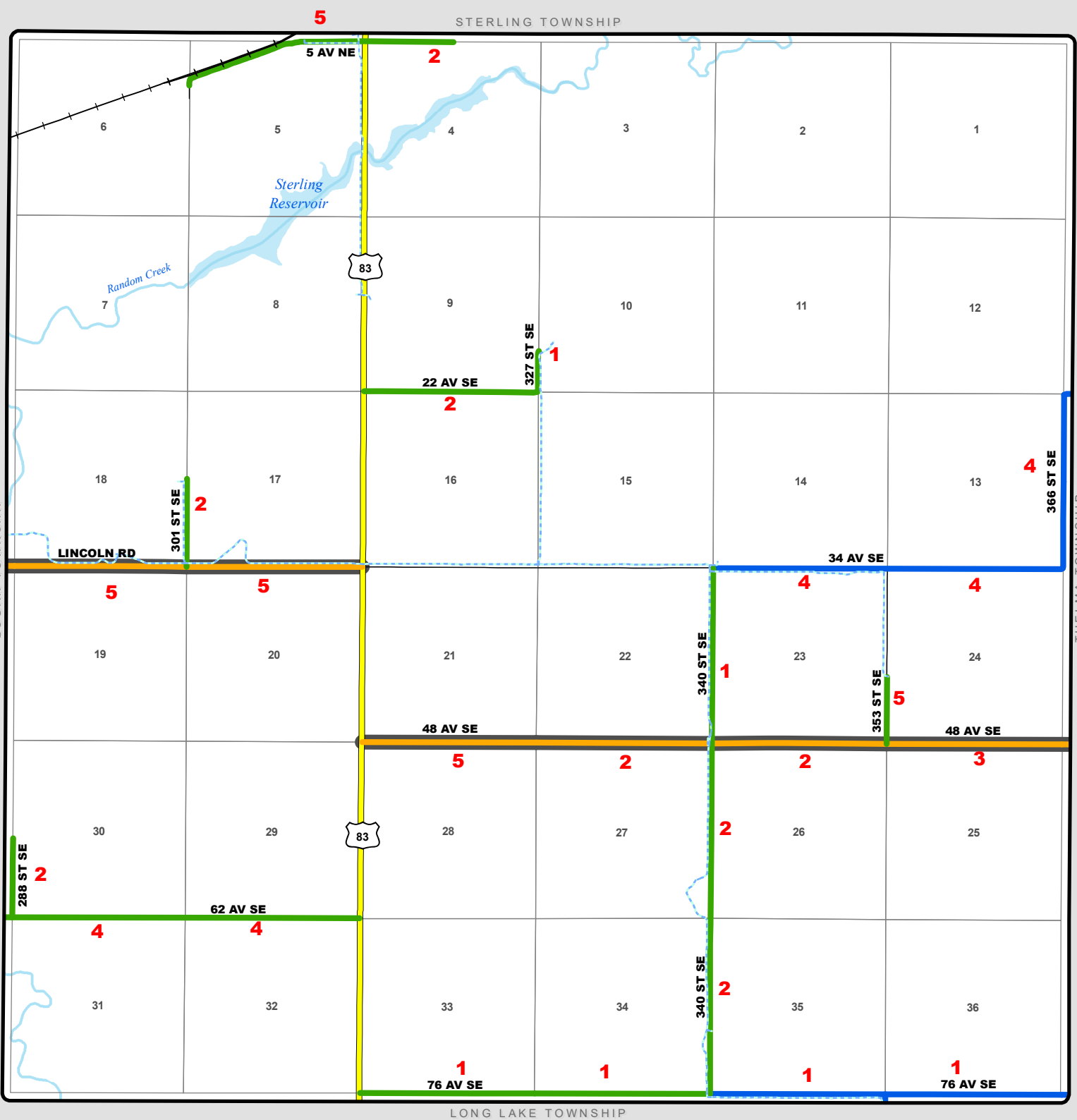


TOWNSHIP ROAD MAINTENANCE MAP TAFT #42 (T138N R76W)



- County Gravel Road
- Gravel - Winter Maintenance
- Paved - Winter Maintenance
- State & Federal Highways
- Bridge
- County Paved Road
- Gravel - Year Round Maintenance
- Paved - Year Round Maintenance
- Federal Aid Road
- Water Pipe
- Gravel - Summer Maintenance
- Paved - Summer Maintenance
- Township/County Jurisdiction
- Other Roads