

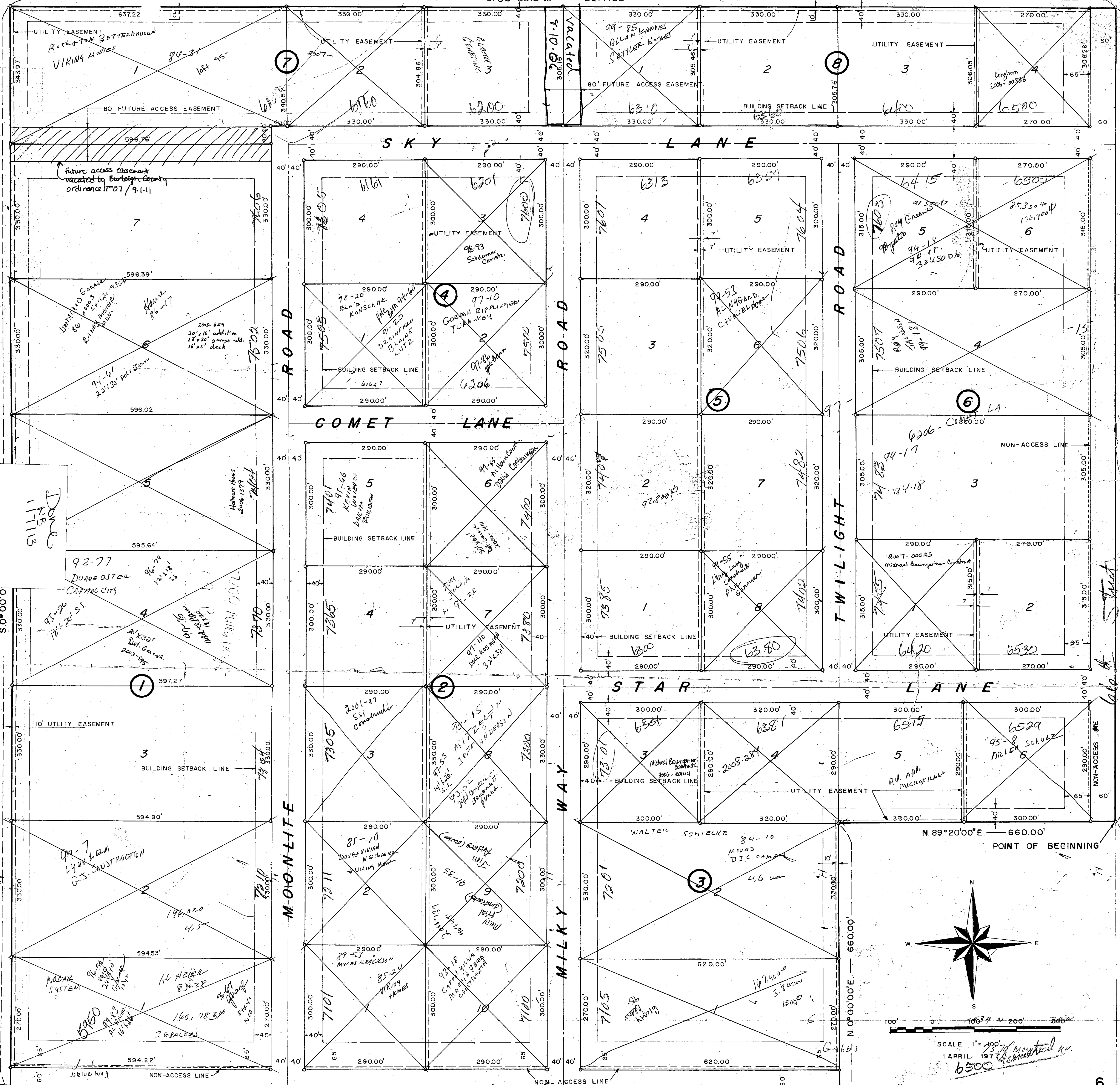
SKYLINE ESTATES

SEC. 6 T.139N. R.79W.

S.E. 1/4

BURLEIGH COUNTY, NORTH DAKOTA

S 88°28'12"W 2617.22'



SKYLINE ESTATES

N. 0°00'00"E. 1996.33'

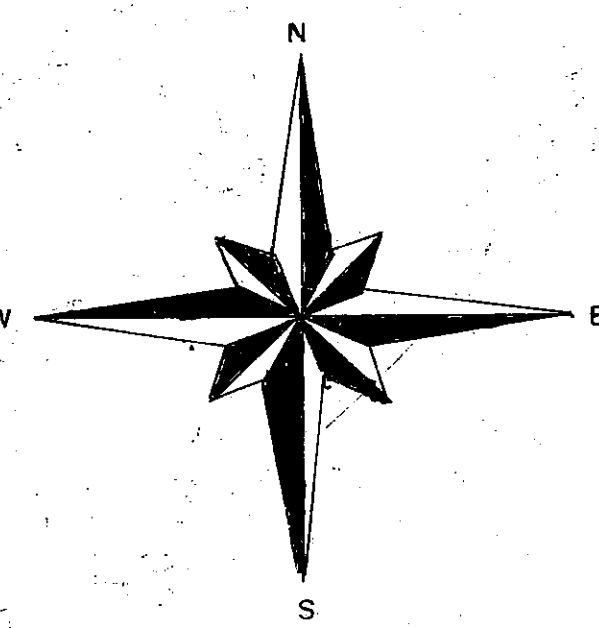
660.00'

660.00'

660.00'

660.00'

660.00'



SCALE 1" = 100'
APRIL 1978
6500

• DENOTES IRON PIN
PROPERTY CORNERS AT INTERSECTIONS ROUNDED WITH 20' RADIUS
ALL BEARING ARE BASED ON ASSUMED DATA

DEVELOPER — KEN LANDSBERGER
R#1, BISMARCK, N.D.

SURVEYOR — C.W. BANKHEAD
LAKE ENGINEERING ASSOC.
1412 - 18TH ST.
BISMARCK, N. D.

SECTION CORNER

Skyline Estates
ETA
Plat Number 7720