

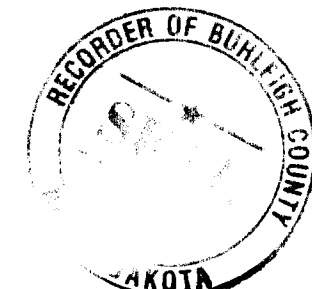
JMT SUBDIVISION

AUDITOR'S LOT C

NORTHWEST 1/4 SECTION 20, TOWNSHIP 138 NORTH, RANGE 79 WEST

BURLEIGH COUNTY, NORTH DAKOTA

774337
Debbie Krohms
Page 1 of 1
12/14/2012 1:31 PM
Burleigh County



DESCRIPTION

AUDITOR'S LOT C OF THE NORTHWEST 1/4 SECTION 20 TOWNSHIP 138 NORTH, RANGE 79 WEST OF THE 5TH PRINCIPAL MERIDIAN, BURLEIGH COUNTY, NORTH DAKOTA CONTAINING 40.00 ACRES, MORE OR LESS.

APPROVAL OF CITY ENGINEER

I, BRAD KROGSTAD, P.E., CITY ENGINEER OF THE CITY OF LINCOLN, NORTH DAKOTA, HEREBY APPROVE "JMT SUBDIVISION", LINCOLN, NORTH DAKOTA AS SHOWN ON THE ANNEXED PLAT.

Brad Krogstad
BRAD KROGSTAD, P.E.
CITY ENGINEER



APPROVAL OF BOARD OF COUNTY COMMISSIONERS

THE BOARD OF COUNTY COMMISSIONERS OF BURLEIGH COUNTY, NORTH DAKOTA, HAS APPROVED THE SUBDIVISION OF LAND AS SHOWN ON THE ANNEXED PLAT, HAS ACCEPTED THE DEDICATION OF ALL STREETS SHOWN THEREON, HAS APPROVED THE GROUNDS AS SHOWN ON THE ANNEXED PLAT AS AN AMENDMENT TO THE MASTER PLAN OF BURLEIGH COUNTY, NORTH DAKOTA, AND DOES HEREBY VACATE ANY PREVIOUS PLATTING WITHIN THE BOUNDARY OF THE ANNEXED PLAT. THE FOREGOING ACTION OF THE BOARD OF COUNTY COMMISSIONERS OF BURLEIGH COUNTY, NORTH DAKOTA, WAS TAKEN BY RESOLUTION APPROVED THE 5TH DAY OF March, 2012.

Doug Schonert
DOUG SCHONERT - CHAIRMAN

Kevin J. Glatt
ATTEST
KEVIN J. GLATT - COUNTY AUDITOR

APPROVAL OF CITY PLANNING COMMISSION

THE SUBDIVISION OF LAND AS SHOWN ON THE ANNEXED PLAT HAS BEEN APPROVED BY THE PLANNING COMMISSION OF THE CITY OF LINCOLN, ON THE 10 DAY OF January, 2012, IN ACCORDANCE WITH THE LAWS OF THE STATE OF NORTH DAKOTA, ORDINANCES OF THE CITY OF LINCOLN AND REGULATIONS ADOPTED BY THE SAID PLANNING COMMISSION. IN WITNESS WHEREOF ARE SET THE HANDS AND SEALS OF THE CHAIRMAN AND SECRETARY OF THE PLANNING COMMISSION OF THE CITY OF LINCOLN.

Don Lervik
CHAIRMAN - DON LERVIK

Janice Sackman
SECRETARY - JANICE SACKMAN

APPROVAL OF BOARD OF CITY COUNCIL

THE CITY COUNCIL OF THE CITY OF LINCOLN, NORTH DAKOTA, HAS APPROVED THE SUBDIVISION OF LAND AS SHOWN ON THE ANNEXED PLAT, HAS ACCEPTED THE DEDICATION OF ALL STREETS SHOWN THEREON, HAS APPROVED THE GROUNDS AS SHOWN ON THE ANNEXED PLAT AS AN AMENDMENT TO THE MASTER PLAN OF THE CITY OF LINCOLN, NORTH DAKOTA, AND DOES HEREBY VACATE ANY PREVIOUS PLATTING WITHIN THE BOUNDARY OF THE ANNEXED PLAT. THE FOREGOING ACTION OF THE CITY COUNCIL OF THE CITY OF LINCOLN, NORTH DAKOTA, WAS TAKEN BY RESOLUTION APPROVED THE 12 DAY OF January, 2012.

Robert Johnston
MAYOR - ROBERT JOHNSTON

Melanie Kitzan
ATTEST
CITY AUDITOR - MELANIE KITZAN

OWNERS CERTIFICATE & DEDICATION

KNOW ALL MEN BY THESE PRESENTS THAT JMT PROPERTIES LLC BEING THE OWNERS AND PROPRIETORS OF THE PROPERTY SHOWN ON THE ANNEXED PLAT HAVE CAUSED THAT PORTION DESCRIBED HEREON TO BE SURVEYED AND PLATTED AS "JMT SUBDIVISION" LINCOLN, NORTH DAKOTA AND DO SO DEDICATE STREETS AS SHOWN HEREON INCLUDING ALL CULVERTS TO THE PUBLIC USE FOREVER.

THEY ALSO DEDICATE EASEMENTS TO RUN WITH THE LAND, FOR GAS, ELECTRIC, TELEPHONE, SANITARY SEWER, LANDSCAPE OR OTHER PUBLIC UTILITIES OR SERVICES ON OR UNDER THOSE CERTAIN STRIPS OF LAND DESIGNATED HEREON AS "UTILITY, LANDSCAPE AND SANITARY SEWER EASEMENTS".

THEY FURTHERMORE DEDICATE UNTO THE CITY OF LINCOLN, NORTH DAKOTA "STORM WATER AND DRAINAGE EASEMENTS" TO RUN WITH THE LAND FOR THE PURPOSE OF STORM SEWER AND SURFACE WATER DRAINAGE UNDER, ON, OVER AND/OR ACROSS THOSE AREAS DEDICATED HEREON AS "STORM WATER AND DRAINAGE EASEMENTS" FOR THE PURPOSE OF CONSTRUCTION, RECONSTRUCTION, REPAIR, ENLARGING AND MAINTAINING STORM WATER MANAGEMENT FACILITIES TOGETHER WITH NECESSARY APPURTENANCES THERETO FOR STORM WATER, STORM SEWER AND SURFACE WATER DRAINAGE AND MANAGEMENT OF SAID STORM WATER FLOW IN A MANNER THAT WILL PERMIT THE FREE AND UNOBSTRUCTED FLOW OF WATER UNDER, OVER AND/OR ACROSS THE EASEMENTS AREA.

STATE OF NORTH DAKOTA }
COUNTY OF BURLEIGH } SS

JMT Properties LLC
JMT PROPERTIES LLC
8 HUMBERT DRIVE
LINCOLN, ND 58504

ON THIS 3RD DAY OF March, 2012, BEFORE ME PERSONALLY APPEARED *David Patience* OF JMT PROPERTIES KNOWN TO ME TO BE THE PERSON DESCRIBED IN AND WHO EXECUTED THE FOREGOING CERTIFICATE AND HE ACKNOWLEDGED TO ME THAT THEY EXECUTED THE SAME.

DAVID PATIENCE
Notary Public
State of North Dakota
My Commission Expires Aug 24, 2016

David Patience
DAVID PATIENCE, NOTARY PUBLIC
BURLEIGH COUNTY, NORTH DAKOTA
MY COMMISSION EXPIRES AUGUST 24, 2016

SURVEYOR'S CERTIFICATE

I, LARRY J. SMITH, A REGISTERED LAND SURVEYOR IN THE STATE OF NORTH DAKOTA, HEREBY CERTIFY THE ANNEXED PLAT IS A TRUE COPY OF THE NOTES OF A SURVEY PERFORMED UNDER MY SUPERVISION AND COMPLETED ON 3-26-12, AND THAT ALL INFORMATION SHOWN HEREON IS TRUE AND CORRECT TO THE BEST OF MY KNOWLEDGE AND BELIEF AND THAT THE REQUIRED MONUMENTS ARE IN PLACE.

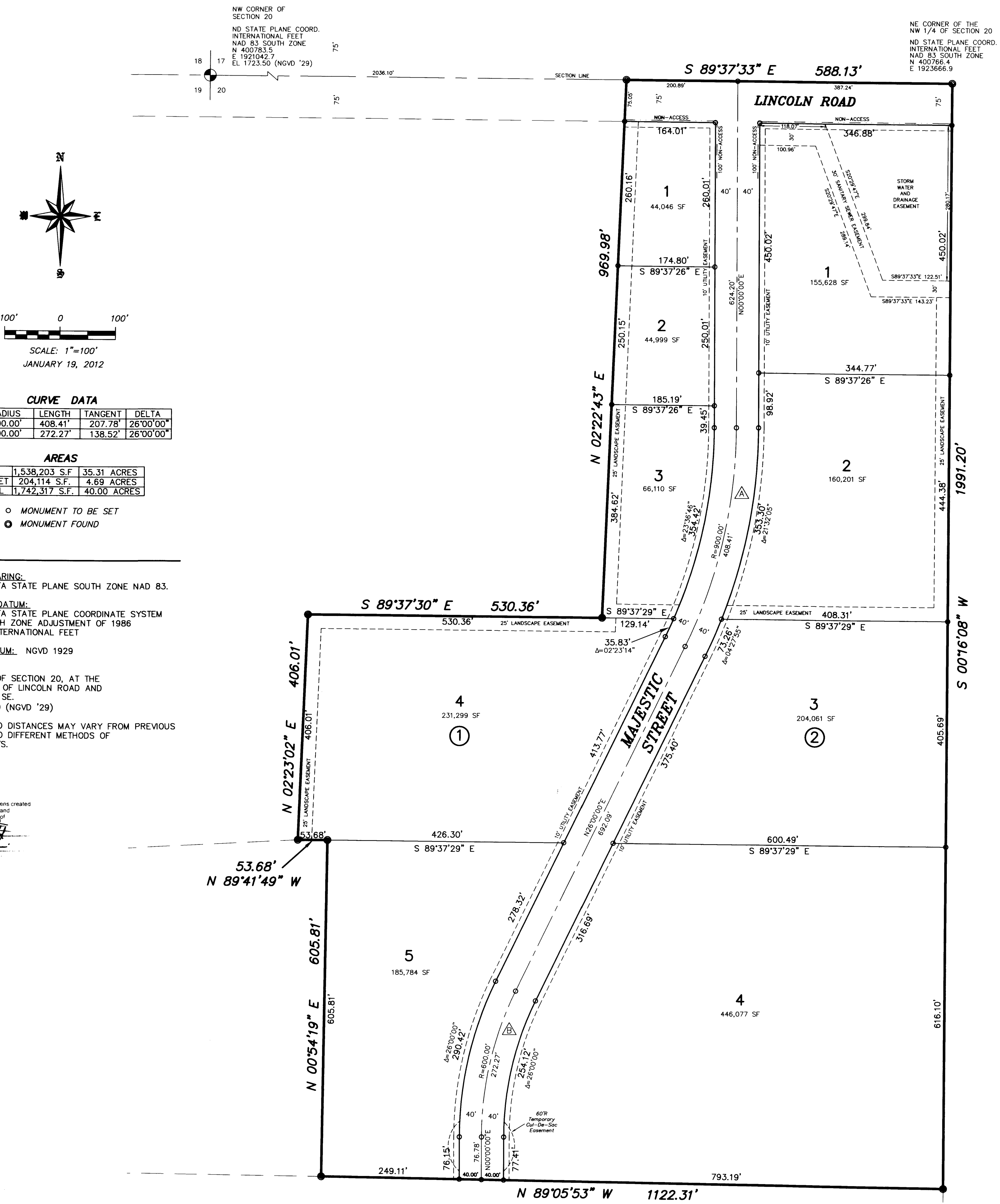
STATE OF NORTH DAKOTA }
COUNTY OF BURLEIGH } SS

LARRY J. SMITH
REGISTERED LAND SURVEYOR
N.D. REGISTRATION NO. 2363

ON THIS 2ND DAY OF March, 2012, BEFORE ME PERSONALLY APPEARED LARRY J. SMITH, KNOWN TO ME TO BE THE PERSON WHO IS DESCRIBED IN AND WHO EXECUTED THE FOREGOING CERTIFICATE AND HE ACKNOWLEDGED TO ME THAT HE EXECUTED THE SAME.

DAVID PATIENCE
Notary Public
State of North Dakota
My Commission Expires Aug 24, 2016

David Patience
DAVID PATIENCE, NOTARY PUBLIC
BURLEIGH COUNTY, NORTH DAKOTA
MY COMMISSION EXPIRES AUGUST 24, 2016



CURVE DATA

CURVE	RADIUS	LENGTH	TANGENT	DELTA
A	900.00'	408.41'	207.78'	26°00'00"
B	600.00'	272.27'	138.52'	26°00'00"

AREAS

LOTS	1,538,203 S.F.	35.31 ACRES
STREET	204,114 S.F.	4.69 ACRES
TOTAL	1,742,317 S.F.	40.00 ACRES

- MONUMENT TO BE SET
- MONUMENT FOUND

NOTES:
BASIS OF BEARING:
NORTH DAKOTA STATE PLANE SOUTH ZONE NAD 83.
COORDINATE DATUM:
NORTH DAKOTA STATE PLANE COORDINATE SYSTEM NAD 83 SOUTH ZONE ADJUSTMENT OF 1986 UNITS ARE INTERNATIONAL FEET
VERTICAL DATUM: NGVD 1929
BENCHMARK:
NW CORNER OF SECTION 20, AT THE INTERSECTION OF LINCOLN ROAD AND 66TH STREET SE. ELEV. 1723.50 (NGVD '29)
BEARINGS AND DISTANCES MAY VARY FROM PREVIOUS PLATS DUE TO DIFFERENT METHODS OF MEASUREMENTS.

