

HARLEYWOOD SUBDIVISION

THE NORTHWEST 1/4 OF THE SOUTHEAST 1/4 OF THE SOUTHEAST 1/4
AND THE SOUTH 1/2 OF THE SOUTHEAST 1/4 SOUTHEAST 1/4
SECTION 4, T. 137 N., R 80 W.

BURLEIGH COUNTY, NORTH DAKOTA

DESCRIPTION

THE NORTHWEST 1/4 OF THE SOUTHEAST 1/4 OF THE SOUTHEAST 1/4 AND THE SOUTH 1/2 OF THE SOUTHEAST 1/4 OF THE SOUTHEAST 1/4, SECTION 4, T. 137 N., R 80 W., OF THE FIFTH PRINCIPAL MERIDIAN, BURLEIGH COUNTY, NORTH DAKOTA, ALSO DESCRIBED AS FOLLOWS:

BEGINNING AT THE SOUTHEAST CORNER OF SECTION 4, THENCE SOUTH 89 DEGREES 39 MINUTES 30 SECONDS WEST ALONG THE SOUTH LINE OF SECTION 4, A DISTANCE OF 1320.08 FEET TO THE WEST LINE OF THE SOUTHEAST 1/4 OF THE SOUTHEAST 1/4; THENCE NORTH 00 DEGREES 01 MINUTE 06 SECONDS EAST ALONG SAID WEST LINE A DISTANCE OF 1334.70 FEET TO THE NORTH LINE OF THE SOUTHEAST 1/4 OF THE SOUTHEAST 1/4; THENCE SOUTH 89 DEGREES 55 MINUTES 38 SECONDS EAST ALONG SAID NORTH LINE A DISTANCE OF 659.82 FEET TO THE NORTHEAST CORNER OF THE NORTHWEST 1/4 OF THE SOUTHEAST 1/4 OF THE SOUTHEAST 1/4; THENCE SOUTH 00 DEGREES 00 MINUTES 34 SECONDS WEST ALONG THE EAST LINE OF THE NORTHWEST 1/4 OF THE SOUTHEAST 1/4 OF THE SOUTHEAST 1/4, A DISTANCE OF 664.97 FEET TO THE NORTH LINE OF THE SOUTH 1/2 OF THE SOUTHEAST 1/4 OF THE SOUTHEAST 1/4; THENCE NORTH 89 DEGREES 51 MINUTES 56 SECONDS EAST ALONG SAID NORTH LINE A DISTANCE OF 659.92 FEET TO THE EAST LINE OF SAID SECTION 4; THENCE SOUTH 00 DEGREES 00 MINUTES 01 SECONDS EAST ALONG SAID EAST LINE A DISTANCE OF 662.58 FEET TO THE POINT OF BEGINNING.
THE ABOVE DESCRIBED TRACT OF LAND CONTAINS 30.24 ACRES, MORE OR LESS.

APPROVAL OF COUNTY PLANNING COMMISSION

THE SUBDIVISION OF LAND AS SHOWN ON THE ANNEXED PLAT HAS BEEN APPROVED BY THE PLANNING COMMISSION OF BURLEIGH COUNTY, ON THE 15TH DAY OF ~~SEPTEMBER~~ SEPTEMBER, 1997, IN ACCORDANCE WITH THE LAWS OF THE STATE OF NORTH DAKOTA, ORDINANCES OF BURLEIGH COUNTY AND REGULATIONS ADOPTED BY THE SAID PLANNING COMMISSION. IN WITNESS WHEREOF ARE SET THE HANDS AND SEALS OF THE CHAIRMAN AND SECRETARY OF THE PLANNING COMMISSION OF BURLEIGH COUNTY.

Keith Salter
KEITH SALTER - CHAIRMAN
Kevin Glatt
KEVIN GLATT - SECRETARY

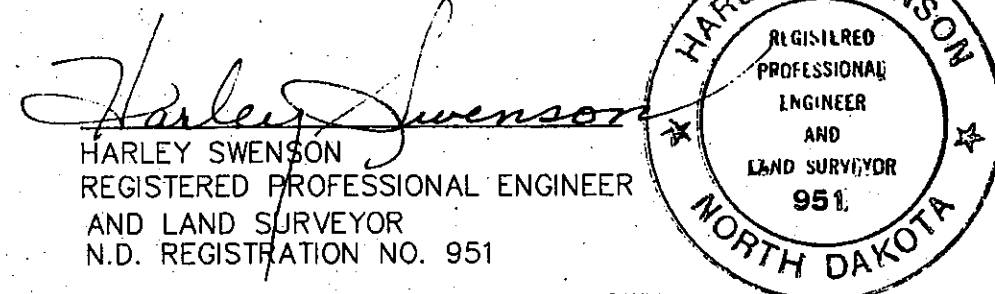
APPROVAL OF BOARD OF COUNTY COMMISSIONERS

THE BOARD OF COUNTY COMMISSIONERS OF BURLEIGH COUNTY, NORTH DAKOTA, HAS APPROVED THE SUBDIVISION OF LAND AS SHOWN ON THE ANNEXED PLAT, HAS ACCEPTED THE DEDICATION OF ALL STREETS SHOWN THEREON, HAS APPROVED THE GROUNDS AS SHOWN ON THE ANNEXED PLAT AS AN AMENDMENT TO THE MASTER PLAN OF BURLEIGH COUNTY, NORTH DAKOTA, AND DOES HEREBY VACATE ANY PREVIOUS PLATTING WITHIN THE BOUNDARY OF THE ANNEXED PLAT.
THE FOREGOING ACTION OF THE BOARD OF COUNTY COMMISSIONERS OF BURLEIGH COUNTY, NORTH DAKOTA, WAS TAKEN BY RESOLUTION APPROVED THE 02ND DAY OF October, 1997.

Bill Delmore
BILL DELMORE - CHAIRMAN
Kevin Glatt
ATTEST
KEVIN GLATT - COUNTY AUDITOR

SURVEYOR'S CERTIFICATE

I, HARLEY SWENSON, A REGISTERED PROFESSIONAL ENGINEER AND LAND SURVEYOR IN THE STATE OF NORTH DAKOTA, HEREBY CERTIFY THAT THE ANNEXED PLAT IS A TRUE COPY OF THE NOTES OF A SURVEY PERFORMED UNDER MY SUPERVISION AND COMPLETED ON SEPTEMBER 22, 1997, AND THAT ALL INFORMATION SHOWN HEREON IS TRUE AND CORRECT TO THE BEST OF MY KNOWLEDGE AND BELIEF.



STATE OF NORTH DAKOTA)
SS)
COUNTY OF BURLEIGH)
ON THIS 22ND DAY OF September, 1997, BEFORE ME PERSONALLY APPEARED HARLEY SWENSON, KNOWN TO ME TO BE THE PERSON DESCRIBED IN AND WHO EXECUTED THE FOREGOING SURVEYOR'S CERTIFICATE AND HE ACKNOWLEDGED TO ME THAT HE EXECUTED THE SAME.

David Patience
DAVID PATIENCE, NOTARY PUBLIC
BURLEIGH COUNTY, NORTH DAKOTA
MY COMMISSION EXPIRES AUGUST 24, 1998

APPROVAL OF COUNTY ENGINEER

I, JON MILL, COUNTY ENGINEER OF THE COUNTY OF BURLEIGH, NORTH DAKOTA, HEREBY APPROVE "HARLEYWOOD SUBDIVISION" BURLEIGH COUNTY, NORTH DAKOTA AS SHOWN ON THE ANNEXED PLAT.

Jon Mill
JON MILL
COUNTY ENGINEER

OWNER'S CERTIFICATE & DEDICATION

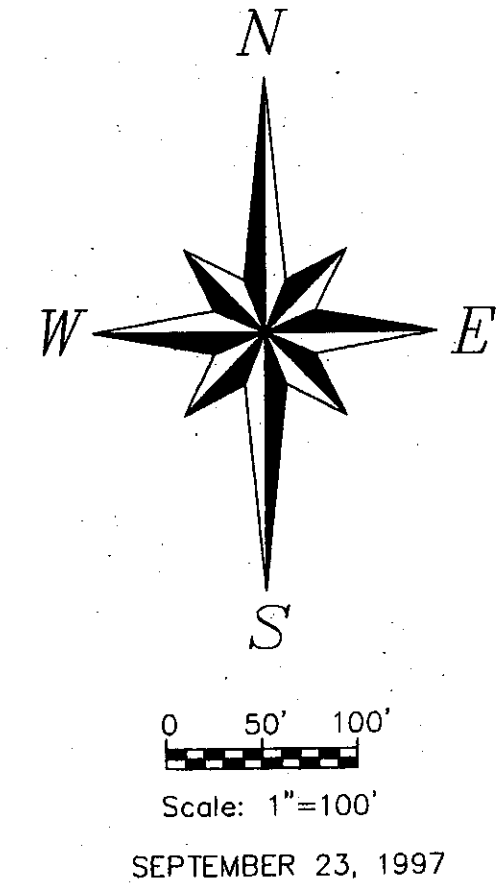
KNOW ALL MEN BY THESE PRESENTS THAT DAVID DICK AND MODEAN E. DICK, BEING THE OWNERS AND PROPRIETORS OF THE PROPERTY SHOWN ON THE ANNEXED PLAT HAVE CAUSED THAT PORTION DESCRIBED HEREON TO BE SURVEYED AND PLATTED AS "HARLEYWOOD SUBDIVISION" BURLEIGH COUNTY, NORTH DAKOTA AND DO HEREBY DEDICATE STREETS AS SHOWN HEREON.

THEY ALSO DEDICATE EASEMENTS TO RUN WITH THE LAND, FOR GAS, ELECTRIC, TELEPHONE OR OTHER PUBLIC UTILITIES OR SERVICES ON OR UNDER THOSE CERTAIN STRIPS OF LAND DESIGNATED HEREON AS "UTILITY EASEMENTS".

David Dick
DAVID DICK
Modean E. Dick
MODEAN E. DICK

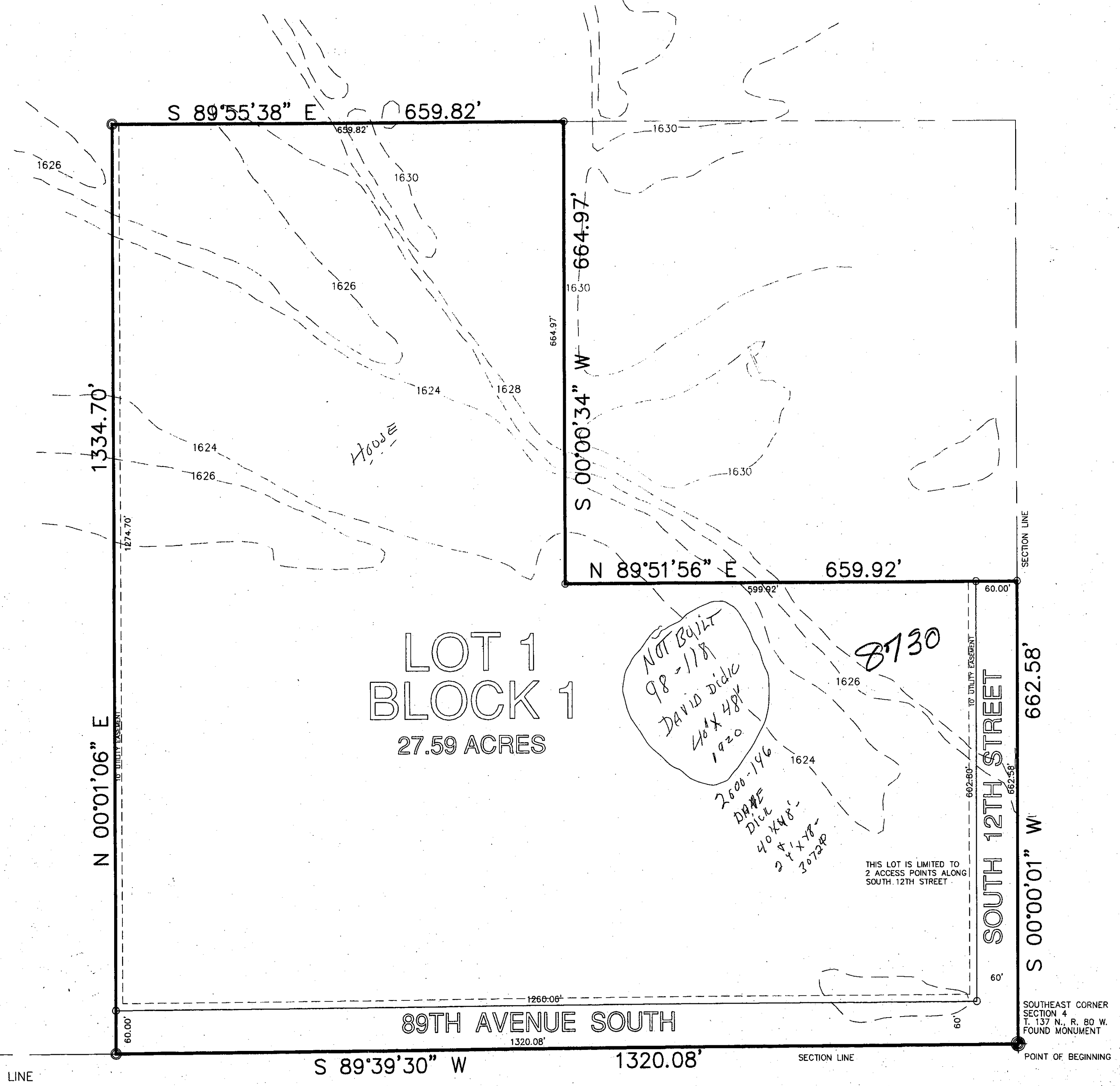
STATE OF NORTH DAKOTA)
SS)
COUNTY OF BURLEIGH)
ON THIS 22ND DAY OF September, 1997, BEFORE ME PERSONALLY APPEARED DAVID DICK AND MODEAN E. DICK KNOWN TO ME TO BE THE PERSONS DESCRIBED IN AND WHOSE NAMES ARE SUBSCRIBED TO THE ABOVE INSTRUMENT AND ACKNOWLEDGED TO ME THAT THEY EXECUTED THE SAME.

David Patience
DAVID PATIENCE, NOTARY PUBLIC
BURLEIGH COUNTY, NORTH DAKOTA
MY COMMISSION EXPIRES AUGUST 24, 1998



FLOODPLAIN ELEVATION = 1629.7 (1985 FIRM)

NOTE
○ FOUND MONUMENT
○ MONUMENT TO BE SET
LOT AREA 27.59
STREET AREA 2.65
TOTAL AREA 30.24



LOT 1
BLOCK 1
27.59 ACRES

Not Built
98-118
David Dick
46x48
1920
2000-146
DICK
40x40
2x14-18
2x14-18
2x14-18

THIS LOT IS LIMITED TO 2 ACCESS POINTS ALONG SOUTH 12TH STREET

Harleywood Subdivision
ETA
Plat Number 2430

SWENSON, HAGEN & CO. P.C.
PLANNING SURVEYING CIVIL ENGINEERING SURVEYING
SITE DESIGN CONSTRUCTION MANAGEMENT
606 BISHOP AVE. P.O. BOX 1135 (701) 223-2600
BISMARCK, N.D. 58504 FAX (701) 223-2608

Sheet # 49-A

Harleywood Sub