

HAADEM SUBDIVISION

LOT C OF THE EAST 1/2 AND LOT E OF LOT C OF THE SOUTHEAST 1/4

SECTION 6, T. 140 N., R. 80 W.

BURLEIGH COUNTY, NORTH DAKOTA

NOTES

BASIS OF BEARING:
NORTH DAKOTA STATE PLANE, SOUTH ZONE

COORDINATE DATUM:
NORTH DAKOTA STATE PLANE COORDINATE SYSTEM
NAD 83 SOUTH ZONE
ADJUSTMENT OF 1986
UNITS ARE INTERNATIONAL FEET

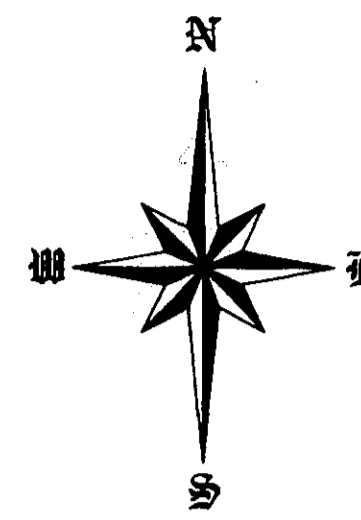
BEARINGS AND DISTANCES MAY VARY FROM PREVIOUS PLATS DUE TO DIFFERENT METHODS OF MEASUREMENTS.



789876
213.10
Page 1 of 1
02/20/2013 11:12 AM
Burleigh County

AREA DATA		
LOTS	1,883,549 S.F.	43.24 ACRES
STREET	204,074 S.F.	4.68 ACRES
TOTAL	2,087,623 S.F.	47.92 ACRES

NE 1/4 | 2,087,623 S.F. | 47.92 ACRES



0 50' 100' 150'

SCALE: 1"=100'

MARCH 15, 2013

DESCRIPTION
LOT C OF THE EAST 1/2 AND LOT E OF LOT C OF THE SOUTHEAST 1/4, SECTION 6, T. 140 N., R. 80 W., BURLEIGH COUNTY, NORTH DAKOTA DESCRIBED AS FOLLOWS:

BEGINNING AT THE SOUTHEAST CORNER OF AUCK SUBDIVISION; THENCE SOUTH 05 DEGREES 21 MINUTES 40 SECONDS WEST, ALONG THE EAST LINE OF SAID NORTHEAST 1/4, A DISTANCE OF 1354.09 FEET; THENCE NORTH 87 DEGREES 21 MINUTES 22 SECONDS WEST, ALONG THE SOUTH LINE OF LOT C, A DISTANCE OF 1498.31 FEET; THENCE NORTH 04 DEGREES 22 MINUTES 54 SECONDS EAST, ALONG THE EAST LINE OF PIERCE'S ACRES, A DISTANCE OF 1233.63 FEET; THENCE NORTH 87 DEGREES 19 MINUTES 03 SECONDS WEST, ALONG THE NORTH LINE OF PIERCE'S ACRES, A DISTANCE OF 375.00 FEET; THENCE NORTH 04 DEGREES 15 MINUTES 35 SECONDS EAST, A DISTANCE OF 119.94 FEET, TO THE SOUTH LINE OF AUDITOR'S LOT D; THENCE SOUTH 87 DEGREES 20 MINUTES 12 SECONDS EAST, ALONG SAID SOUTH LINE & THE SOUTH LINE OF AUCK SUBDIVISION, A DISTANCE OF 1896.71 FEET TO THE POINT OF BEGINNING.

THE ABOVE DESCRIBED TRACT CONTAINS 47.92 ACRES, MORE OR LESS.

SURVEYOR'S CERTIFICATE

I, TERRY BALTZER, A PROFESSIONAL LAND SURVEYOR IN THE STATE OF NORTH DAKOTA, HEREBY CERTIFY THAT THE ANNEXED PLAT IS A TRUE COPY OF THE NOTES OF A SURVEY PERFORMED UNDER MY SUPERVISION AND COMPLETED ON NOVEMBER 29, 2012, THAT ALL INFORMATION SHOWN HEREON IS TRUE AND CORRECT TO THE BEST OF MY KNOWLEDGE AND BELIEF, THAT ALL MONUMENTS SHOWN HEREON ARE CORRECT, THAT ALL REQUIRED MONUMENTS HAVE BEEN SET, AND THAT ALL DIMENSIONAL AND GEODETIC DETAILS ARE CORRECT.



STATE OF NORTH DAKOTA) SWENSON, HAGEN & CO. P.C.
COUNTY OF BURLEIGH) 909 BASIN AVENUE
BISMARCK, NORTH DAKOTA

Terry Baltzer
TERRY BALTZER
PROFESSIONAL LAND SURVEYOR
N.D. REGISTRATION NO. 3595

ON THIS 15th DAY OF MARCH, 2013, BEFORE ME PERSONALLY APPEARED TERRY BALTZER, KNOWN TO ME TO BE THE PERSON DESCRIBED IN AND WHO EXECUTED THE FOREGOING SURVEYOR'S CERTIFICATE AND HE ACKNOWLEDGED TO ME THAT HE EXECUTED THE SAME.

DAVID PATIENCE
Notary Public
State of North Dakota
My Commission Expires Aug. 24, 2016

David Patience
DAVID PATIENCE, NOTARY PUBLIC
BURLEIGH COUNTY, NORTH DAKOTA
MY COMMISSION EXPIRES AUGUST 24, 2016

APPROVAL OF BOARD OF COUNTY COMMISSIONERS

THE BOARD OF COUNTY COMMISSIONERS OF BURLEIGH COUNTY, NORTH DAKOTA, HAS APPROVED THE SUBDIVISION OF LAND AS SHOWN ON THE ANNEXED PLAT, HAS ACCEPTED THE DEDICATION OF ALL STREETS SHOWN THEREON, HAS APPROVED THE GROUNDS AS SHOWN ON THE ANNEXED PLAT AS AN AMENDMENT TO THE MASTER PLAN OF BURLEIGH COUNTY, NORTH DAKOTA, AND DOES HEREBY VACATE ANY PREVIOUS PLATTING WITHIN THE BOUNDARY OF THE ANNEXED PLAT.

THE FOREGOING ACTION OF THE BOARD OF COUNTY COMMISSIONERS OF BURLEIGH COUNTY, NORTH DAKOTA, WAS TAKEN BY RESOLUTION APPROVED THE 2nd DAY OF APRIL, 2013.

Jerry Woodcox
JERRY WOODCOX - CHAIRMAN

Kevin J. Glatt
ATTEST
KEVIN J. GLATT - COUNTY AUDITOR

APPROVAL OF COUNTY PLANNING COMMISSION

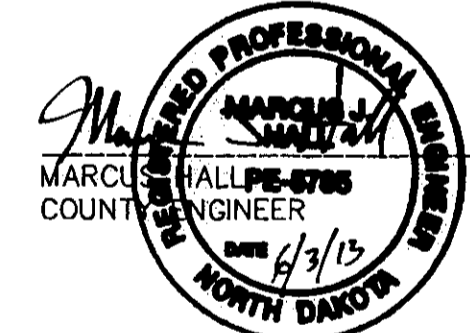
THE SUBDIVISION OF LAND AS SHOWN ON THE ANNEXED PLAT HAS BEEN APPROVED BY THE PLANNING COMMISSION OF BURLEIGH COUNTY, ON THE 13th DAY OF MARCH, 2013, IN ACCORDANCE WITH LAWS OF THE STATE OF NORTH DAKOTA, ORDINANCES OF BURLEIGH COUNTY AND REGULATIONS ADOPTED BY THE SAID PLANNING COMMISSION. IN WITNESS WHEREOF ARE SET THE HANDS AND SEALS OF THE CHAIRMAN AND SECRETARY OF THE PLANNING COMMISSION OF BURLEIGH COUNTY.

David Andahl
DAVID ANDAHL - CHAIRMAN

Kevin J. Glatt
KEVIN J. GLATT - SECRETARY

APPROVAL OF COUNTY ENGINEER

I, MARCUS HALL, COUNTY ENGINEER OF BURLEIGH COUNTY, NORTH DAKOTA, HEREBY APPROVE "HAADEM SUBDIVISION", BURLEIGH COUNTY, NORTH DAKOTA AS SHOWN ON THE ANNEXED PLAT.



OWNERS' CERTIFICATE & DEDICATION

KNOW ALL MEN BY THESE PRESENTS THAT ELROY HAADEM BEING THE OWNER AND PROPRIETOR OF THE PROPERTY SHOWN HEREON HAS CAUSED THAT PORTION DESCRIBED HEREON TO BE SURVEYED AND PLATTED AS "HAADEM SUBDIVISION", BURLEIGH COUNTY, NORTH DAKOTA.

HE ALSO DEDICATE EASEMENTS TO THE COUNTY OF BURLEIGH TO RUN WITH THE LAND, FOR GAS, ELECTRIC, TELEPHONE OR OTHER PUBLIC UTILITIES OR SERVICES ON OR UNDER THOSE CERTAIN STRIPS OF LAND DESIGNATED HEREON AS UTILITY EASEMENTS.

STATE OF NORTH DAKOTA) ELROY HAADEM
COUNTY OF BURLEIGH) 15600 15TH STREET NW
BISMARCK ND 58503
OWNER

Elroy Haadem
ELROY HAADEM
15600 15TH STREET NW
BISMARCK ND 58503
OWNER

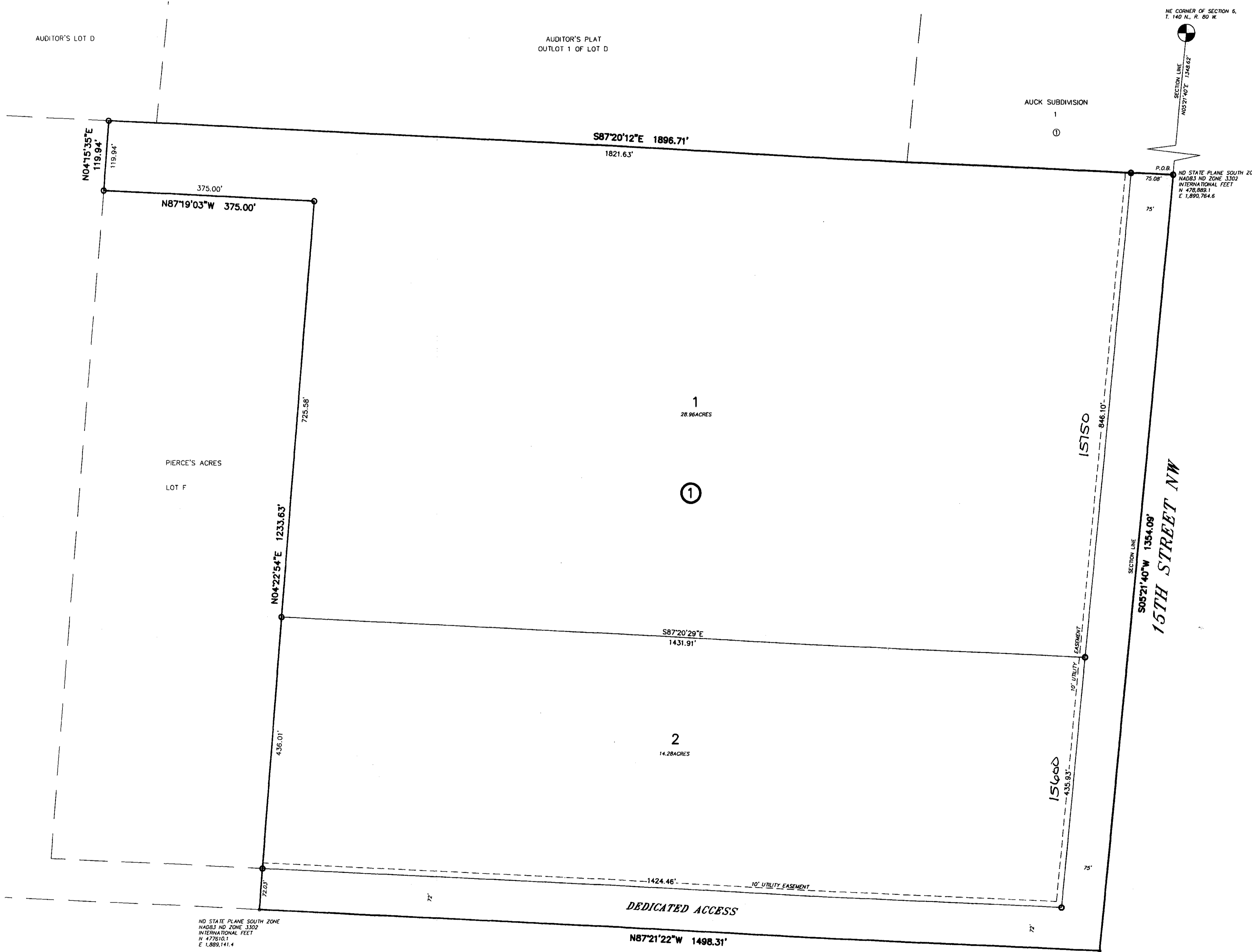
ON THIS 18th DAY OF MARCH, 2013, BEFORE ME PERSONALLY APPEARED ELROY HAADEM KNOWN TO ME TO BE THE PERSON DESCRIBED IN AND WHO EXECUTED THE FOREGOING CERTIFICATE AND HE ACKNOWLEDGED TO ME THAT HE EXECUTED THE SAME.

DAVID PATIENCE
Notary Public
State of North Dakota
My Commission Expires Aug. 24, 2016

David Patience
DAVID PATIENCE, NOTARY PUBLIC
BURLEIGH COUNTY, NORTH DAKOTA
MY COMMISSION EXPIRES AUGUST 24, 2016

Traces and special measurements part, all then recorded under section 57-08-02.3 with the 7 day, and 7 day after completion of this survey.

Walter Boring
Kathleen Smith
County Auditor, Burleigh County Auditor



NO STATE PLANE SOUTH ZONE
NAD83 ND ZONE 3300
INTERNATIONAL FEET
N 47°21'01.1
E 1498.141.4

Haadem Subdivision
County

SWENSON, HAGEN & COMPANY P.C.
909 Basin Avenue
Bismarck, North Dakota 58504
sheng@swensonhagen.com
Phone (701) 223-2600
Fax (701) 223-2606
Surveying
Hydrology
Land Planning
Civil Engineering
Landscape & Site Design
Construction Management