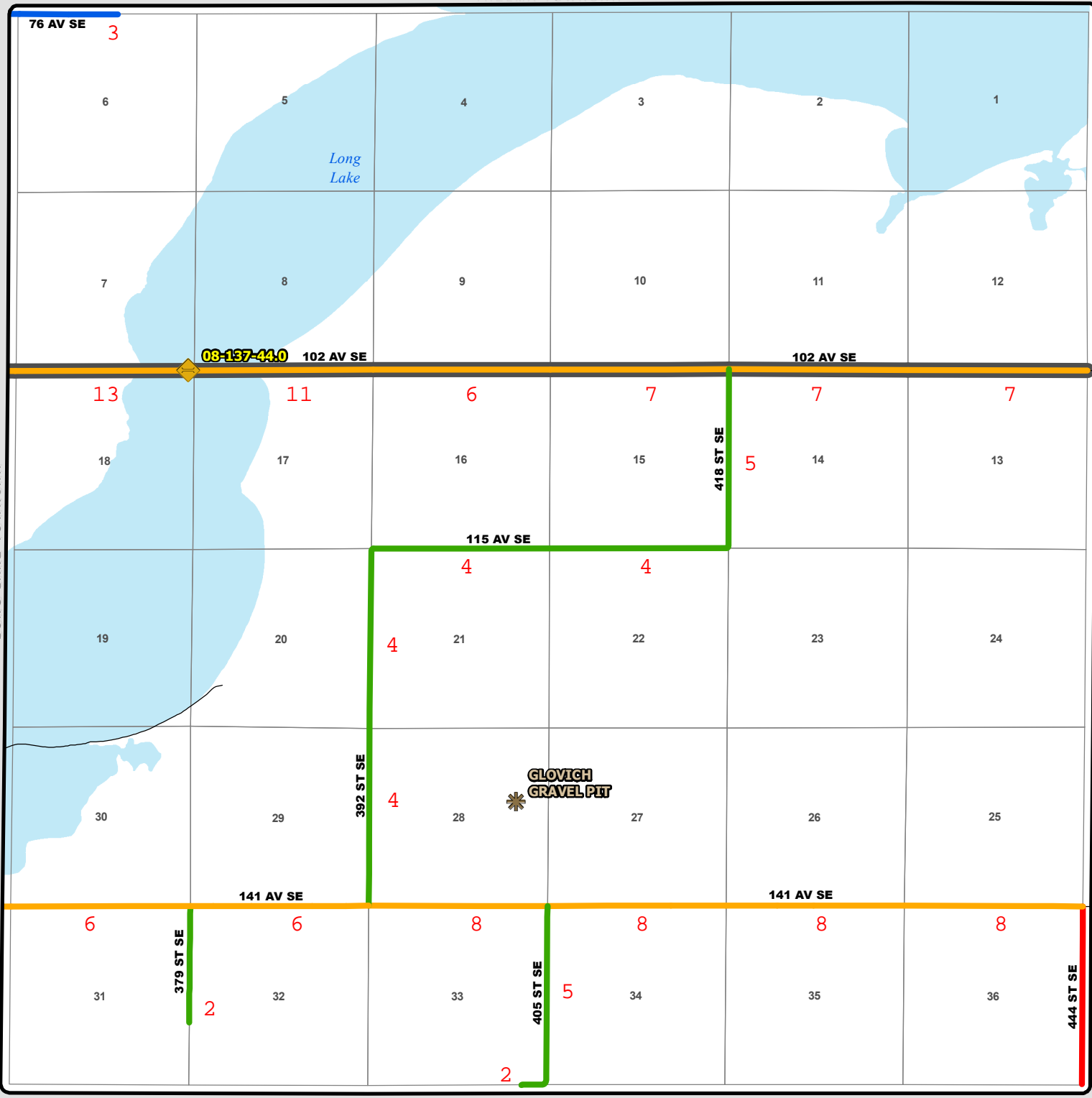


TOWNSHIP ROAD MAINTENANCE MAP WILDROSE #54 (T137N R75W)

THELMA TOWNSHIP



LONG LAKE TOWNSHIP

KIDDER COUNTY

EMMONS COUNTY

- | | | | | |
|-----------------------------|---------------------------------|--------------------------------|--------------------------|------------|
| County Gravel Road | Gravel - Winter Maintenance | Paved - Winter Maintenance | State & Federal Highways | Bridge |
| County Paved Road | Gravel - Year Round Maintenance | Paved - Year Round Maintenance | Federal Aid Road | Water Pipe |
| Gravel - Summer Maintenance | Paved - Summer Maintenance | Township/County Jurisdiction | Other Roads | |