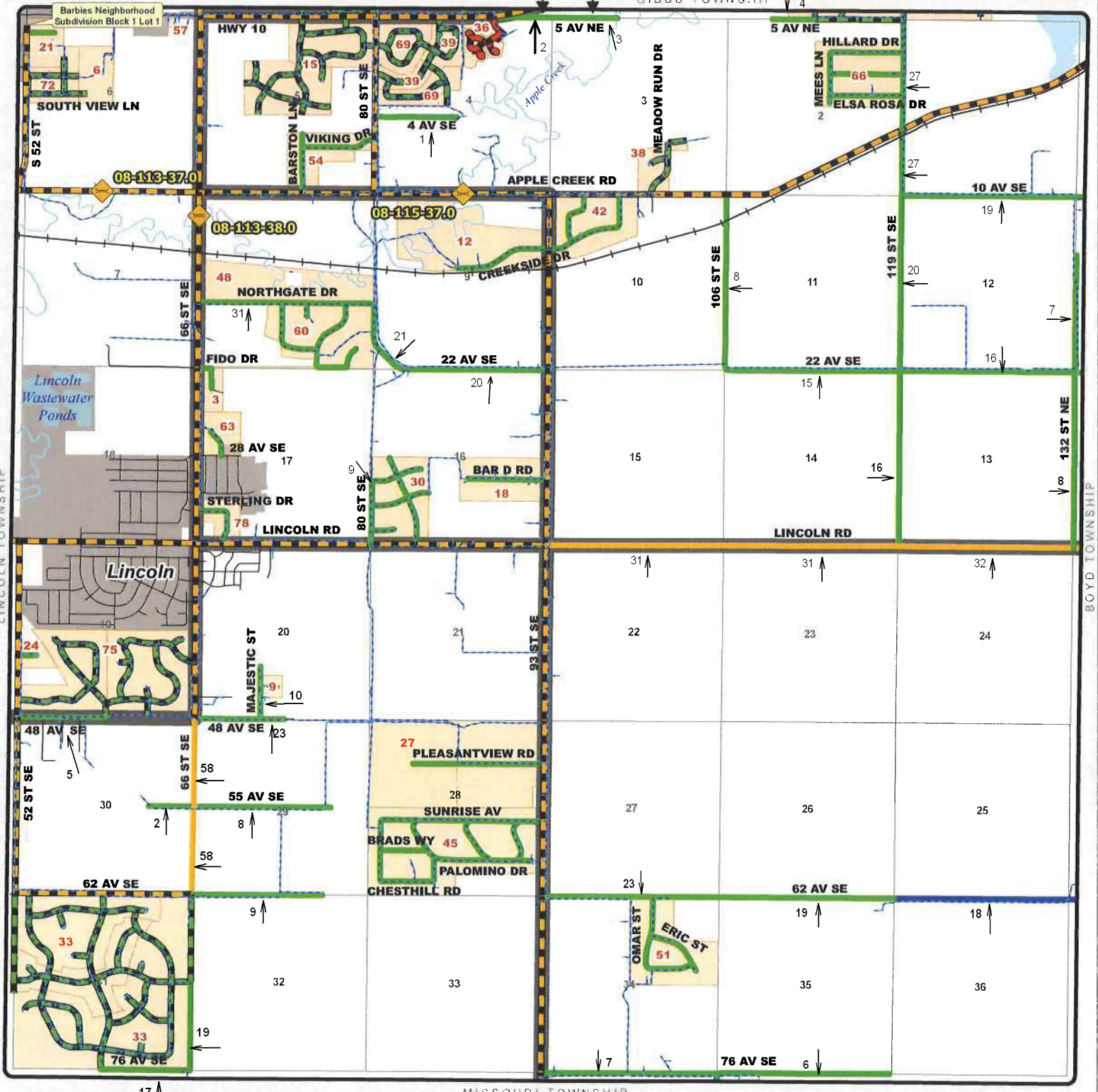




TOWNSHIP ROAD MAINTENANCE MAP APPLE CREEK #39 (T138N R79W)

N
02/27/2017

0.11mi Apple Creek 0.58mi Gibbs



County Gravel Road	Gravel - Winter Maintenance	Paved - Winter Maintenance	State & Federal Highways	Bridge
County Paved Road	Gravel - Year Round Maintenance	Paved - Year Round Maintenance	Federal Aid Road	Water Pipe
Gravel - Summer Maintenance	Paved - Summer Maintenance	Township/County Jurisdiction	Other Roads	

APPLE CREEK SUBDIVISIONS

CODE	NAME	SECTION
3	66TH STREET INDUSTRIAL PARK 4	17
6	ABERLE SUBDIVISION	6
9	ANDERSON ACRES	20
12	APPLE CREEK ESTATES 2	9
15	APPLE MEADOWS 1ST SUBDIVISION	5
15	APPLE MEADOWS 2ND SUBDIVISION	5
18	BAR D ESTATES 9	16
21	BARBIES NEIGHBORHOOD SUBDIVISION	6
24	BEULAH MEADOWS SUBDIVISION 2	19
27	C AND L ESTATES 21	28
27	C AND L ESTATES 2ND ADDITION	28
30	CITY VIEW HEIGHTS 6	16
33	COPPER RIDGE SUBDIVISION	31
33	COPPER RIDGE 2ND SUBDIVISION	31
33	COPPER RIDGE 3RD SUBDIVISION	31
36	APPLE CREEK COUNTRY CLUB 1ST SUBDIVISION	4
36	APPLE CREEK COUNTRY CLUB 2ND SUB	4
36	APPLE CREEK COUNTRY CLUB 3RD SUB REP L1 B2	4
36	APPLE CREEK COUNTRY CLUB 3RD SUBDIVISION	4
38	COUNTRY VIEW ESTATES	3
39	EAST RIDGE 1ST SUBDIVISION	4
39	EAST RIDGE 2ND SUBDIVISION	4
42	EAST VALLEY ESTATES 3	10
45	FAIMANS SUNRISE ADDITION 19	28
48	GEMUENDEN 1ST SUBDIVISION	8
51	GLASSER SUBDIVISION 10	34
54	GOLDEN HEIGHTS SUBDIVISION 3	5
57	HIGHWAY SUBDIVISION	6
60	LEISURE WORLD ESTATES SUBDIVISION 16	8
63	MAUCH SUBDIVISION 1	17
66	MEES COUNTRY HOME ESTATES 5	2
69	PINE MEADOWS SUBDIVISION	4
69	PINE MEADOWS 2ND SUBDIVISION	4
72	PRAIRIE VIEW SUBDIVISION	6
75	PRAIRIEWOOD ESTATES	19
75	PRAIRIEWOOD ESTATES 2ND	19
78	SOUTHEAST INDUSTRIAL PARK 5	17