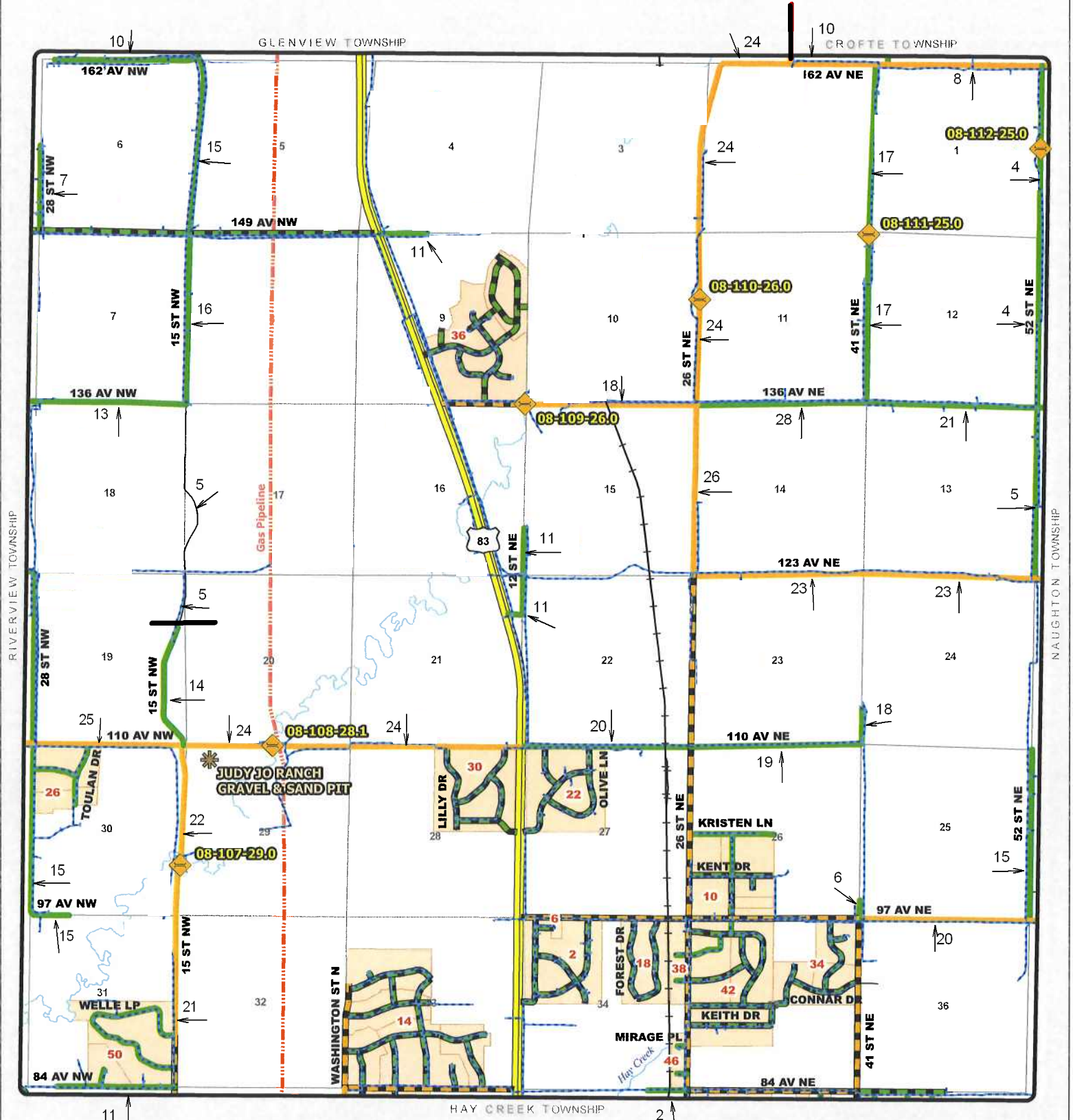




# TOWNSHIP ROAD MAINTENANCE MAP BURNT CREEK #24 (T140N R80W)



County Gravel Road	Gravel - Winter Maintenance	Paved - Winter Maintenance	State & Federal Highways	Bridge
County Paved Road	Gravel - Year Round Maintenance	Paved - Year Round Maintenance	Federal Aid Road	Water Pipe
Gravel - Summer Maintenance	Paved - Summer Maintenance	Township/County Jurisdiction	Other Roads	

### BURNT CREEK SUBDIVISIONS

CODE	NAME	SECTION
2	BRENTWOOD ESTATES	34
6	BRENTWOOD ESTATES REPLAT	34
10	FOUR Ks ESTATES 8	26
10	FOUR Ks ESTATES REPLAT	26
14	HARVEST GROVE 1ST SUBDIVISION	33
14	HARVEST GROVE 2ND SUBDIVISION	33
14	HARVEST GROVE 3RD SUBDIVISION	33
14	HARVEST GROVE 4TH SUBDIVISION	33
14	HARVEST RIDGE SUBDIVISION	33
18	HAY CREEK PINES SUBDIVISION	34
22	NORTHWOOD ESTATES REPLAT	27
26	PARIS PLACE FIRST SUBDIVISION 9	30
26	PARIS PLACE SECOND SUBDIVISION	30
30	PRAIRIECREST 1ST SUBDIVISION	28
30	PRAIRIECREST 2ND SUBDIVISION	28
34	PRAIRIE PINES 1ST SUBDIVISION	35
34	PRAIRIE PINES 2ND SUBDIVISION	35
34	PRAIRIE PINES 3RD SUBDIVISION	35
36	RANCH SUBDIVISION (THE)	9
36	RANCH 2ND SUBDIVISION (THE)	9
38	RUSTIC ACRES 1ST REPLAT 4	34
42	SHAMROCK ACRES 5	35
42	SHAMROCK ACRES 2ND SUBDIVISION	35
42	SHAMROCK ACRES 3RD SUBDIVISION	35
46	SUNNY MEADOW ESTATE REPLAT 5	34
50	WELLE 2ND SUBDIVISION	31
50	WELLE SUBDIVISION 9	31