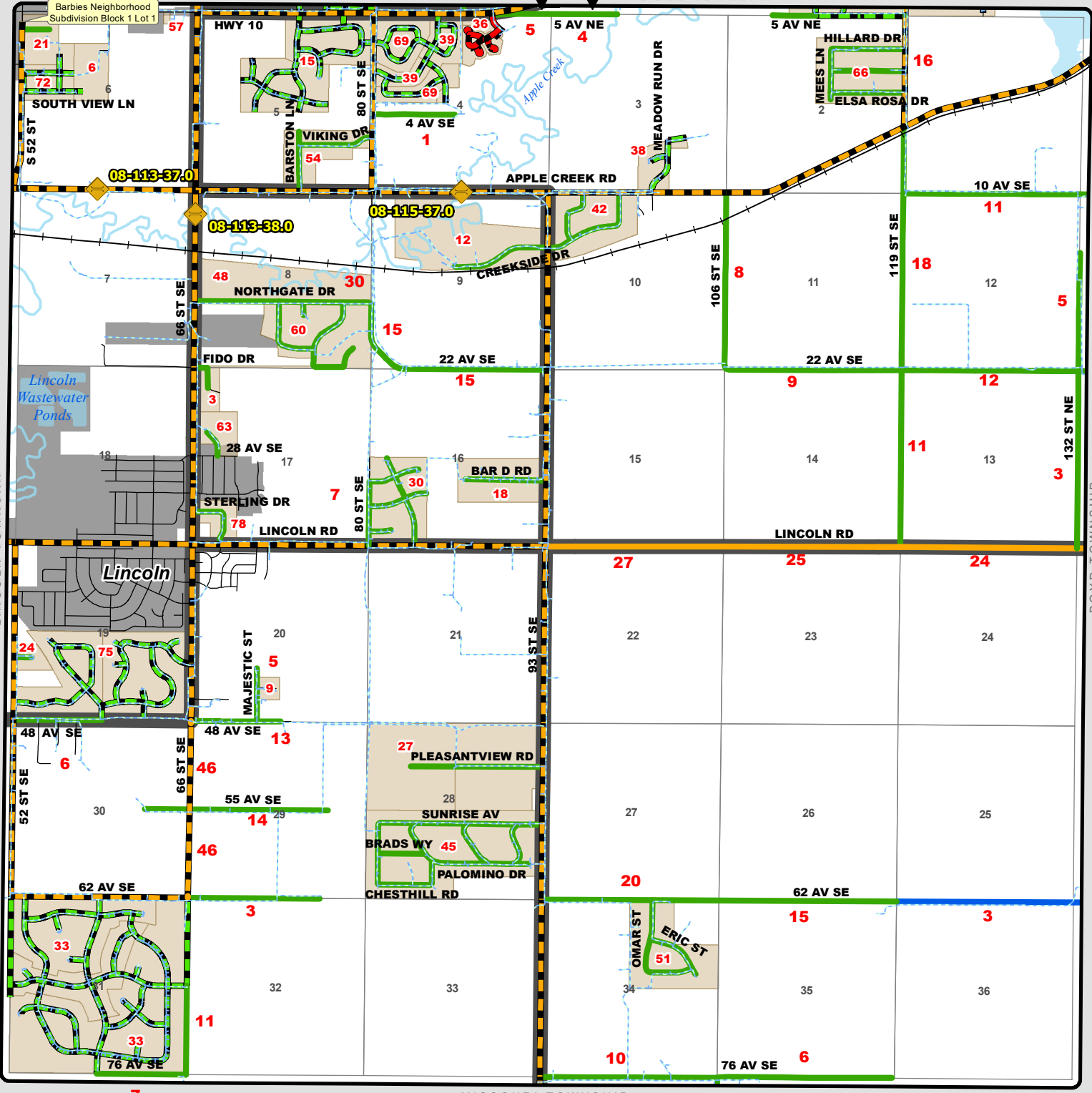


TOWNSHIP ROAD MAINTENANCE MAP APPLE CREEK #39 (T138N R79W)

0.11mi Apple Creek 0.58mi Gibbs

GIBBS TOWNSHIP



- | | | | | |
|-----------------------------|---------------------------------|--------------------------------|--------------------------|------------|
| County Gravel Road | Gravel - Winter Maintenance | Paved - Winter Maintenance | State & Federal Highways | Bridge |
| County Paved Road | Gravel - Year Round Maintenance | Paved - Year Round Maintenance | Federal Aid Road | Water Pipe |
| Gravel - Summer Maintenance | Paved - Summer Maintenance | Township/County Jurisdiction | Other Roads | |

APPLE CREEK SUBDIVISIONS

CODE	NAME	SECTION
3	66TH STREET INDUSTRIAL PARK	17
6	ABERLE SUBDIVISION	6
9	ANDERSON ACRES	20
12	APPLE CREEK ESTATES	5
15	APPLE MEADOWS 1ST SUBDIVISION	5
15	APPLE MEADOWS 2ND SUBDIVISION	5
18	BAR D ESTATES	7
21	BARBIES NEIGHBORHOOD SUBDIVISION	6
24	BEULAH MEADOWS SUBDIVISION	19
27	C AND L ESTATES	17
27	C AND L ESTATES 2ND ADDITION	28
30	CITY VIEW HEIGHTS	4
33	COPPER RIDGE SUBDIVISION	31
33	COPPER RIDGE 2ND SUBDIVISION	31
33	COPPER RIDGE 3RD SUBDIVISION	31
36	APPLE CREEK COUNTRY CLUB 1ST SUBDIVISION	4
36	APPLE CREEK COUNTRY CLUB 2ND SUB	4
36	APPLE CREEK COUNTRY CLUB 3RD SUB REP L1 B2	4
36	APPLE CREEK COUNTRY CLUB 3RD SUBDIVISION	4
38	COUNTRY VIEW ESTATES	3
39	EAST RIDGE 1ST SUBDIVISION	4
39	EAST RIDGE 2ND SUBDIVISION	4
42	EAST VALLEY ESTATES	4
45	FAIMANS SUNRISE ADDITION	16
48	GEMUENDEN 1ST SUBDIVISION	8
51	GLASSER SUBDIVISION	5
54	GOLDEN HEIGHTS SUBDIVISION	9
57	HIGHWAY SUBDIVISION	6
60	LEISURE WORLD ESTATES SUBDIVISION	9
63	MAUCH SUBDIVISION	4
66	MEES COUNTRY HOME ESTATES	1
69	PINE MEADOWS SUBDIVISION	4
69	PINE MEADOWS 2ND SUBDIVISION	4
72	PRAIRIE VIEW SUBDIVISION	6
75	PRAIRIEWOOD ESTATES	19
75	PRAIRIEWOOD ESTATES 2ND	19
78	SOUTHEAST INDUSTRIAL PARK	5