

WELLE SECOND SUBDIVISION

Being A Replat Of Lots 5, 6 & 7 Block 1
Welle Subdivision

Section 31, T. 140 N., R. 80 W.

BURLEIGH COUNTY, NORTH DAKOTA

DESCRIPTION

LOTS 5, 6 AND 7 BLOCK 1 AND THE ADJOINING CUL-DE-SAC STREET (MEADOW RIDGE PLACE)
WELLE SUBDIVISION, BURLEIGH COUNTY, NORTH DAKOTA,
THE ABOVE DESCRIBED TRACT CONTAINS 27.76 ACRES, MORE OR LESS

APPROVAL OF COUNTY PLANNING COMMISSION

THE SUBDIVISION OF LAND AS SHOWN ON THE ANNEXED PLAT HAS BEEN APPROVED BY THE PLANNING COMMISSION OF THE COUNTY OF BURLEIGH, ON THE 23RD DAY OF JULY, 1992, IN ACCORDANCE WITH THE LAWS OF THE STATE OF NORTH DAKOTA, ORDINANCES OF THE COUNTY OF BURLEIGH AND REGULATIONS ADOPTED BY THE SAID PLANNING COMMISSION. IN WITNESS WHEREON ARE SET THE HANDS AND SEALS OF THE CHAIRMAN AND SECRETARY OF THE PLANNING COMMISSION OF THE COUNTY OF BURLEIGH.

Keith Salter
KEITH SALTER - CHAIRMAN

Kevin Glatt
KEVIN GLATT - SECRETARY

APPROVAL OF BOARD OF COUNTY COMMISSIONERS

THE BOARD OF COUNTY COMMISSIONERS OF THE COUNTY OF BURLEIGH, NORTH DAKOTA, HAS APPROVED THE SUBDIVISION OF LAND AS SHOWN ON THE ANNEXED PLAT, HAS ACCEPTED THE DEDICATION OF ALL STREETS SHOWN THEREON, HAS APPROVED THE GROUNDS AS SHOWN ON THE ANNEXED PLAT AS AN AMENDMENT TO THE MASTER PLAN OF THE COUNTY OF BURLEIGH, NORTH DAKOTA, AND DOES HEREBY VACATE ANY PREVIOUS PLATTING WITHIN THE BOUNDARY OF THE ANNEXED PLAT.
THE FOREGOING ACTION OF THE BOARD OF COUNTY COMMISSIONERS OF BURLEIGH COUNTY NORTH DAKOTA BY RESOLUTION APPROVED THE 23RD DAY OF JULY, 1992.

Deanna Hill
DEANNA HILL-CHAIRMAN

Kevin Glatt
KEVIN GLATT-COUNTY AUDITOR

SURVEYOR'S CERTIFICATE

I, LARRY J. SMITH, A REGISTERED LAND SURVEYOR IN THE STATE OF NORTH DAKOTA, HEREBY CERTIFY THAT THE ANNEXED PLAT IS A TRUE COPY OF THE NOTES OF A SURVEY PERFORMED UNDER MY SUPERVISION AND COMPLETED ON APRIL 13, 1992, AND THAT ALL INFORMATION SHOWN HEREON IS TRUE AND CORRECT TO THE BEST OF MY KNOWLEDGE AND BELIEF.



Larry J. Smith
LARRY J. SMITH
REGISTERED LAND SURVEYOR
N.D. REGISTRATION NO. 2363

STATE OF NORTH DAKOTA)
SS)
COUNTY OF BURLEIGH)

ON THIS 23RD DAY OF JULY, 1992, BEFORE ME PERSONALLY APPEARED LARRY J. SMITH, KNOWN TO ME TO BE THE PERSON DESCRIBED IN AND WHO EXECUTED THE FOREGOING SURVEYOR'S CERTIFICATE AND HE ACKNOWLEDGED TO ME THAT HE EXECUTED THE SAME.

David Patience
DAVID PATIENCE, NOTARY PUBLIC
BURLEIGH COUNTY, NORTH DAKOTA
MY COMMISSION EXPIRES JULY 24, 1992

APPROVAL OF COUNTY ENGINEER

I, JON R. MILL, COUNTY ENGINEER OF THE COUNTY OF BURLEIGH, NORTH DAKOTA, HEREBY APPROVE "WELLE SECOND SUBDIVISION" BURLEIGH, NORTH DAKOTA AS SHOWN ON THE ANNEXED PLAT.

Jon R. Mill
JON R. MILL
COUNTY ENGINEER

OWNER'S CERTIFICATE & DEDICATION

KNOW ALL MEN BY THESE PRESENTS THAT EUGENE W. WELLE AND ELAINE C. WELLE, RYAN H. LORAAS AND DAWN R. LORAAS BEING THE OWNERS AND PROPRIETORS OF THE PROPERTY SHOWN ON THE ANNEXED PLAT HAVE CAUSED THAT PORTION DESCRIBED HEREON TO BE SURVEYED AND PLATTED AS "WELLE SECOND SUBDIVISION" BURLEIGH COUNTY, NORTH DAKOTA AND DO SO DEDICATE STREETS AS SHOWN HEREON INCLUDING ALL SEWERS, CULVERTS, WATER AND GAS DISTRIBUTION LINES AND OTHER PUBLIC UTILITY LINES, WHETHER SHOWN HEREON OR NOT, TO THE PUBLIC USE FOREVER.
THEY ALSO DEDICATE EASEMENTS TO RUN WITH THE LAND, FOR GAS, ELECTRIC, TELEPHONE OR OTHER PUBLIC UTILITIES OR SERVICES ON OR UNDER THOSE CERTAIN STRIPS OF LAND DESIGNATED HEREON AS "UTILITY EASEMENTS".

Eugene W. Welle
EUGENE W. WELLE
OWNERS OF LOTS 1, 2, & 4 BLOCK 1

Elaine C. Welle
ELAINE C. WELLE

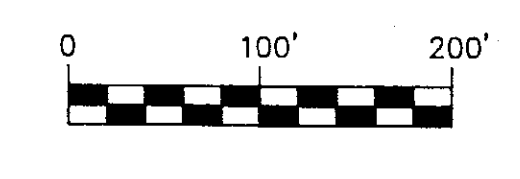
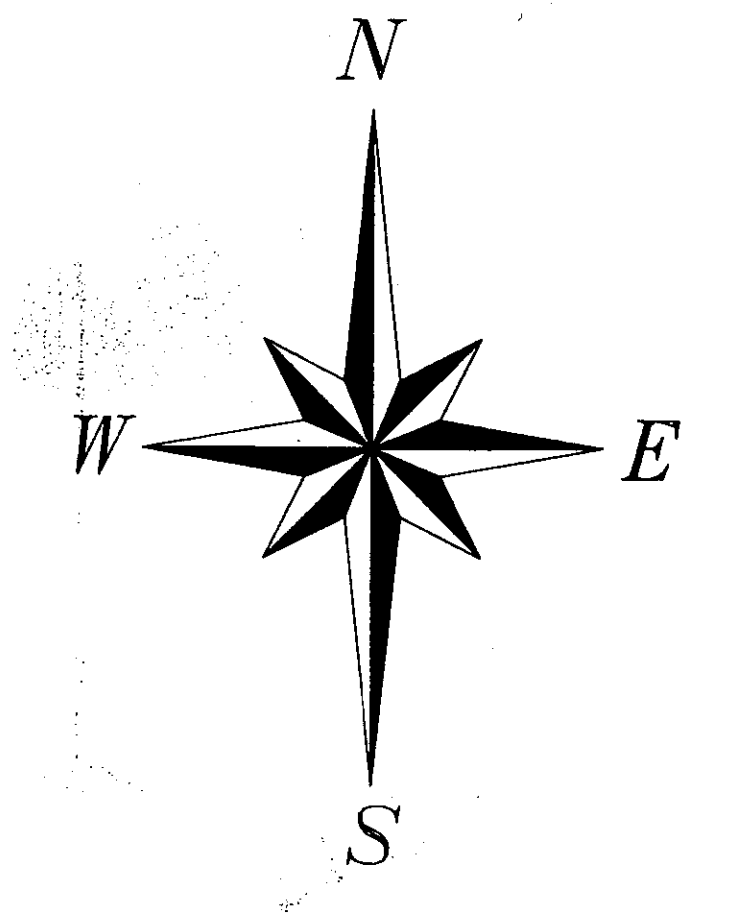
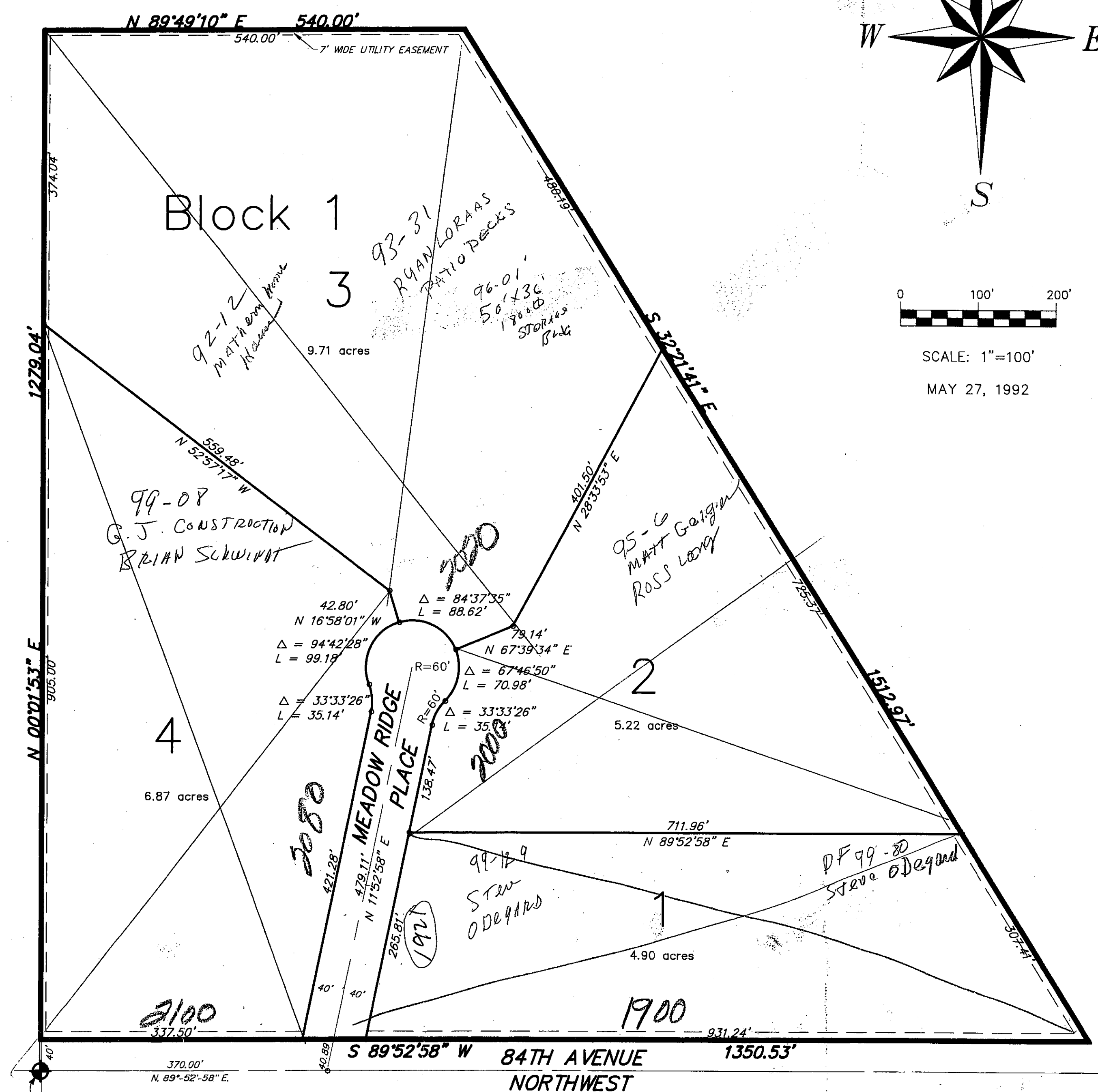
Ryan H. Loraas
RYAN H. LORAAS
OWNERS OF LOT 3 BLOCK 1

Dawn R. Loraas
DAWN R. LORAAS

STATE OF NORTH DAKOTA)
SS)
COUNTY OF BURLEIGH)

ON THIS 30TH DAY OF JULY, 1992, BEFORE ME PERSONALLY APPEARED EUGENE W. WELLE AND ELAINE C. WELLE, RYAN H. LORAAS AND DAWN R. LORAAS KNOWN TO ME TO BE THE PERSONS WHO ARE DESCRIBED IN AND WHO NAMES ARE SUBSCRIBED TO THE WITHIN INSTRUMENT AND THEY ACKNOWLEDGED TO ME THAT THEY EXECUTED THE SAME.

David Patience
DAVID PATIENCE, NOTARY PUBLIC
BURLEIGH COUNTY, NORTH DAKOTA
MY COMMISSION EXPIRES 8-24-96



SCALE: 1"=100'
MAY 27, 1992

Done
NB
12/18/12

Welle 2nd Subdivision
Plat Number 798

CIVIL ENGINEERING LAND PLANNING LAND SURVEYING
SWANSON, HAGEN & CO. P.C.
CONSULTING ENGINEERS
908 BASIN AVENUE P.O. BOX 1130
BISMARCK, NORTH DAKOTA 58502
PHONE 701-223-2800 FAX 701-223-2808

Sheet # 127 A WELLE 2nd