

# Paris Place Second Subdivision

Part Of Lots B And C Of Govt Lot 1 And The East 1/2  
Of The Northwest 1/4 Of Section 30, T. 140 N., R. 80 W.

Burleigh County, North Dakota

## DESCRIPTION

ALL THAT PART OF LOTS B AND C OF GOVERNMENT LOT 1 AND THE EAST HALF (1/2) OF THE NORTHWEST QUARTER (1/4) OF SECTION 30, TOWNSHIP 140 NORTH, RANGE 80 WEST OF THE FIFTH PRINCIPAL MERIDIAN, BURLEIGH COUNTY, NORTH DAKOTA DESCRIBED AS FOLLOWS:

BEGINNING ON THE WEST LINE OF SECTION 30, AT A POINT THAT LIES 1490.00 FEET SOUTH OF THE NORTHWEST SECTION CORNER, SAID POINT BEING THE SOUTHWEST CORNER OF "PARIS PLACE FIRST SUBDIVISION"; THENCE NORTH 90 DEGREES 00 MINUTES 00 SECONDS EAST, ALONG THE SOUTH LINE OF SAID PARIS PLACE FIRST SUBDIVISION, A DISTANCE OF 665.18 FEET; THENCE NORTH 00 DEGREES 00 MINUTES 00 SECONDS EAST, CONTINUING ALONG SAID SOUTH SUBDIVISION LINE, A DISTANCE OF 65.62 FEET; THENCE NORTH 90 DEGREES 00 MINUTES 00 SECONDS EAST, CONTINUING ALONG SAID SOUTH SUBDIVISION LINE, A DISTANCE OF 612.16 FEET; THENCE NORTH 19 DEGREES 23 MINUTES 31 SECONDS EAST, CONTINUING ALONG SAID SOUTH SUBDIVISION LINE, A DISTANCE OF 126.06 FEET; THENCE NORTH 90 DEGREES 00 MINUTES 00 SECONDS EAST, CONTINUING ALONG SAID SOUTH SUBDIVISION LINE, A DISTANCE OF 664.49 FEET TO THE SOUTHEAST CORNER OF SAID SUBDIVISION AND THE EAST LINE OF THE NORTHWEST 1/4 OF SECTION 30; THENCE SOUTH 03 DEGREES 09 MINUTES 19 SECONDS WEST, ALONG SAID EAST 1/4 LINE, A DISTANCE OF 550.83 FEET; THENCE SOUTH 90 DEGREES 00 MINUTES 00 SECONDS WEST, A DISTANCE OF 634.17 FEET; THENCE SOUTH 30 DEGREES 33 MINUTES 00 SECONDS WEST A DISTANCE OF 157.39 FEET; THENCE SOUTH 90 DEGREES 00 MINUTES 00 SECONDS WEST A DISTANCE OF 612.16 FEET; THENCE SOUTH 00 DEGREES 00 MINUTES 00 SECONDS WEST A DISTANCE OF 137.50 FEET; THENCE SOUTH 90 DEGREES 00 MINUTES 00 SECONDS WEST A DISTANCE OF 665.18 FEET TO THE WEST LINE OF SECTION 30; THENCE NORTH 00 DEGREES 00 MINUTES 00 SECONDS EAST, ALONG SAID WEST SECTION LINE, A DISTANCE OF 660.00 FEET TO THE POINT OF BEGINNING.

THE ABOVE DESCRIBED TRACT OF LAND CONTAINS 27.59 ACRES, MORE OR LESS.

## APPROVAL OF COUNTY PLANNING COMMISSION

THE SUBDIVISION OF LAND AS SHOWN ON THE ANNEXED PLAT HAS BEEN APPROVED BY THE PLANNING COMMISSION OF BURLEIGH COUNTY, ON THE 15 DAY OF FEBRUARY, 1999, IN ACCORDANCE WITH THE LAWS OF THE STATE OF NORTH DAKOTA, ORDINANCES OF BURLEIGH COUNTY AND REGULATIONS ADOPTED BY THE SAID PLANNING COMMISSION. IN WITNESS WHEREOF, ARE SET THE HANDS AND SEALS OF THE CHAIRMAN AND SECRETARY OF THE PLANNING COMMISSION OF BURLEIGH COUNTY.

*Greg Tschider*  
GREG TSCHIDER - CHAIRMAN

*Kevin Glatt*  
KEVIN GLATT - SECRETARY

## APPROVAL OF BOARD OF COUNTY COMMISSIONERS

THE BOARD OF COUNTY COMMISSIONERS OF BURLEIGH COUNTY, NORTH DAKOTA, HAS APPROVED THE SUBDIVISION OF LAND AS SHOWN ON THE ANNEXED PLAT, HAS ACCEPTED THE DEDICATION OF ALL STREETS SHOWN THEREON, HAS APPROVED THE GROUNDS AS SHOWN ON THE ANNEXED PLAT AS AN AMENDMENT TO THE MASTER PLAN OF BURLEIGH COUNTY, NORTH DAKOTA, AND DOES HEREBY VACATE ANY PREVIOUS PLATTING WITHIN THE BOUNDARY OF THE ANNEXED PLAT.

THE FOREGOING ACTION OF THE BOARD OF COUNTY COMMISSIONERS OF BURLEIGH COUNTY, NORTH DAKOTA, WAS TAKEN BY RESOLUTION APPROVED THE 15 DAY OF MARCH, 1999.

*Claus H. Lembke*  
CLAUS H. LEMBKE - CHAIRMAN

*Kevin Glatt*  
ATTEST  
KEVIN GLATT - COUNTY AUDITOR

## APPROVAL OF COUNTY ENGINEER

I, JON MILL, COUNTY ENGINEER OF BURLEIGH COUNTY, NORTH DAKOTA, HEREBY APPROVE "PARIS PLACE SECOND SUBDIVISION" BURLEIGH COUNTY, NORTH DAKOTA AS SHOWN ON THE ANNEXED PLAT.

*Jon Mill*  
JON MILL  
COUNTY ENGINEER

## OWNER'S CERTIFICATE & DEDICATION

KNOW ALL MEN BY THESE PRESENTS THAT LUCILLE SCHONERT BEING THE OWNER AND PROPRIETORS OF THE PROPERTY SHOWN ON THE ANNEXED PLAT HAS CAUSED THAT PORTION DESCRIBED HEREON TO BE SURVEYED AND PLATTED AS "PARIS PLACE SECOND SUBDIVISION", BURLEIGH COUNTY, NORTH DAKOTA, AND DOES SO DEDICATE STREETS AS SHOWN HEREON INCLUDING ALL CULVERTS TO THE PUBLIC USE FOREVER. SHE ALSO DEDICATES EASEMENTS TO RUN WITH THE LAND, FOR GAS, ELECTRIC, TELEPHONE OR OTHER PUBLIC UTILITIES OR SERVICES ON OR UNDER THOSE CERTAIN STRIPS OF LAND DESIGNATED HEREON AS "UTILITY EASEMENTS".

STATE OF NORTH DAKOTA )  
SS )  
COUNTY OF BURLEIGH )

ON THIS 17<sup>th</sup> DAY OF MARCH, 1999, BEFORE ME PERSONALLY APPEARED LUCILLE SCHONERT KNOWN TO ME TO BE THE PERSON DESCRIBED IN AND WHOSE NAME IS SUBSCRIBED TO THE WITHIN INSTRUMENT AND THEY ACKNOWLEDGED TO ME THAT THEY EXECUTED THE SAME.

DAVID PATIENCE  
Notary Public, STATE OF NORTH DAKOTA  
My Commission Expires AUGUST 24, 2004

*David Patience*  
NOTARY PUBLIC  
BURLEIGH COUNTY, NORTH DAKOTA  
MY COMMISSION EXPIRES

## SURVEYOR'S CERTIFICATE

I, LARRY J. SMITH, A REGISTERED LAND SURVEYOR IN THE STATE OF NORTH DAKOTA, HEREBY CERTIFY THAT THE ANNEXED PLAT IS A TRUE COPY OF THE NOTES OF A SURVEY PERFORMED UNDER MY SUPERVISION AND COMPLETED ON MAY 3, 1997, AND THAT ALL INFORMATION SHOWN HEREON IS TRUE AND CORRECT TO THE BEST OF MY KNOWLEDGE AND BELIEF.

STATE OF NORTH DAKOTA )  
SS )  
COUNTY OF BURLEIGH )

ON THIS 17<sup>th</sup> DAY OF MARCH, 1999, BEFORE ME PERSONALLY APPEARED LARRY J. SMITH, KNOWN TO ME TO BE THE PERSON DESCRIBED IN AND WHO EXECUTED THE FOREGOING SURVEYOR'S CERTIFICATE AND HE ACKNOWLEDGED TO ME THAT HE EXECUTED THE SAME.

DAVID PATIENCE  
Notary Public, STATE OF NORTH DAKOTA  
My Commission Expires AUGUST 24, 2004

*Larry J. Smith*  
LARRY J. SMITH  
REGISTERED LAND SURVEYOR  
N.D. REGISTRATION NO. 2363  
DAVID PATIENCE, NOTARY PUBLIC  
BURLEIGH COUNTY, NORTH DAKOTA  
MY COMMISSION EXPIRES AUGUST 24, 2004

Northwest Corner  
Section 30  
T. 140 N., R. 80 W.  
Found Cap 951  
North Dakota State  
Plain Coordinates  
South Zone  
N= 459,124.1  
E= 1,885,565.5

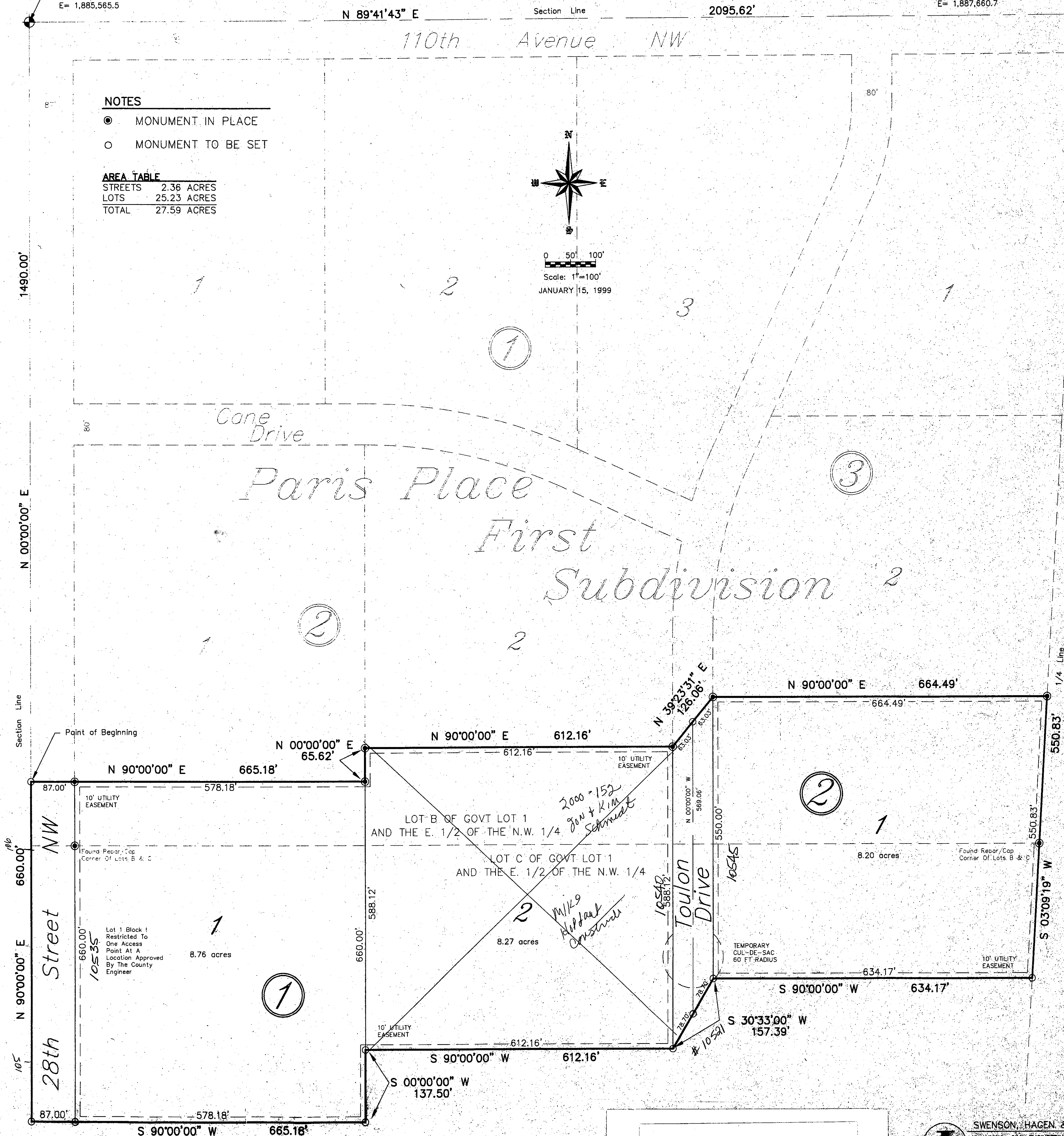
Northeast Corner  
Of The Northwest 1/4  
North Dakota State  
Plain Coordinates  
South Zone  
N= 459,104.8  
E= 1,887,660.7

## NOTES

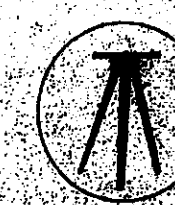
- MONUMENT IN PLACE
- MONUMENT TO BE SET

## AREA TABLE

STREETS	2.36 ACRES
LOTS	25.23 ACRES
TOTAL	27.59 ACRES



Paris Place 2nd Subdivision  
County  
Plat Number 5720.A



SWENSON, HAGEN & CO., P.C.  
PLANNING, CIVIL ENGINEERING, SURVEYING  
SITE DESIGN, CONSTRUCTION MANAGEMENT  
1001 14th Ave. S.E., 58103-1135  
BISMARCK, N.D. 58103-1135  
TEL: 701/781-2000 FAX: 701/781-2001