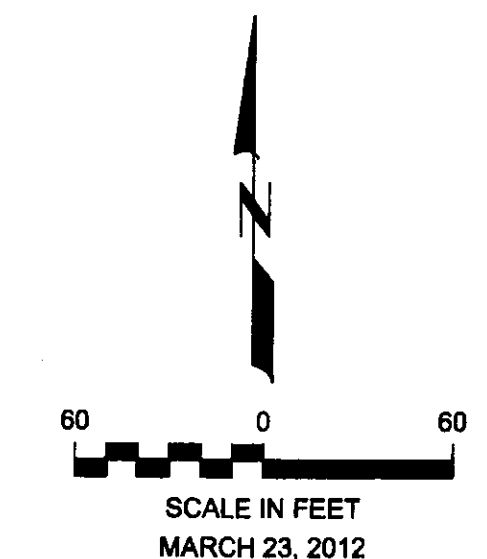
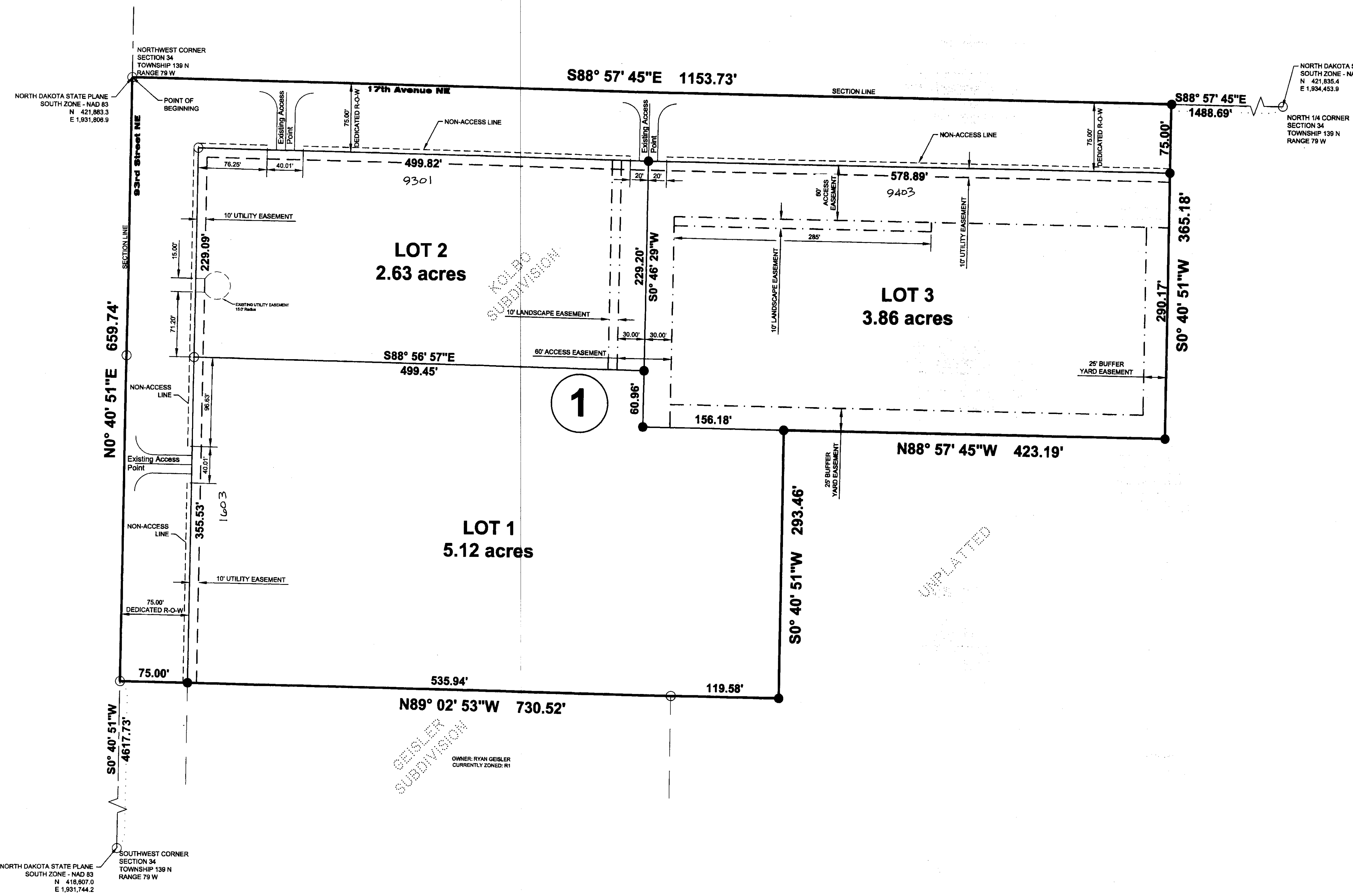


PLAT OF KOLBO 3RD SUBDIVISION GIBBS TOWNSHIP BURLEIGH COUNTY, NORTH DAKOTA

A REPLAT OF KOLBO SUBDIVISION AND PART OF THE N 1/2 OF THE
NW 1/4 OF SECTION 34, TOWNSHIP 139 NORTH, RANGE 79 WEST
OF THE 5th PRINCIPAL MERIDIAN



SQUARE FOOTAGE & ACREAGE		
LOT NO.	SQ. FT.	ACRES
1	223,167.21	5.12
2	114,488.21	2.63
3	168,043.70	3.86
STREETS		130,397.17
TOTAL		636,096.29



DESCRIPTION OF PLAT BOUNDARY

A replat of Kolbo Subdivision and Part of the N 1/2 of the NW 1/4 of Section 34, Township 139 North, Range 79 West of the 5th Principal Meridian, Burleigh County, North Dakota, more fully described as follows:

Beginning at the Northwest Corner of said Section 34; thence S 88°57'45" E, on and along the north line of said Section 34, a distance of 1153.73 feet; thence S 00°40'51" W a distance of 365.18 feet; thence N 88°57'45" W a distance of 423.19 feet; thence S 00°40'51" W a distance of 293.46 feet; thence N 89°02'53" W a distance of 730.52 feet to the west line of said Section 34; thence N 00°40'51" E, on and along said west line of Section 34, a distance of 659.74 feet to the Point of Beginning.

The above described tract contains 14.60 acres more or less.

OWNERS CERTIFICATE & DEDICATION

Know all men by these presents that Larry A. Kolbo, Margo A. Kolbo, being owners and proprietors of Lots 1 and 3, Block 1 and Amos Kolbo, and Carly Kolbo, being owners and proprietors of Lot 2, Block 1, Bismarck, North Dakota, shown on the plat have caused that portion described hereon to be surveyed and platted as "Kolbo 3rd Subdivision", Burleigh County, North Dakota and do so dedicate streets as shown hereon including all culverts to the public use forever.

They also dedicate easements to run with the land, for gas, electric, telephone or other public utilities or services on or under those certain strips of land designated hereon as "Utility Easements".

APPROVAL OF CITY PLANNING COMMISSION

The subdivision of land as shown on the annexed plat has been approved by the Planning Commission of the City of Bismarck, on the 22nd day of August, 2012, in accordance with the laws of the State of North Dakota, ordinances of the City of Bismarck and regulations adopted by the said Planning Commission, in witness whereof are set the hands and seals of the Chairman and Secretary of the Planning Commission of the City of Bismarck.

APPROVAL OF CITY ENGINEER

I, Melvin J. Bullinger, City Engineer of Bismarck, North Dakota, hereby approve "Kolbo 3rd Subdivision" Bismarck, Burleigh County, North Dakota as shown on the annexed plat.

APPROVAL OF BOARD OF CITY COMMISSIONERS

The Board of City Commissioners of the City of Bismarck, North Dakota, has approved the subdivision of land as shown on the annexed plat, has accepted the dedication of all streets shown thereon, has approved the grounds as shown on the annexed plat as an amendment to the master plan of the City of Bismarck, North Dakota. The foregoing action of the City Commission of Bismarck, North Dakota, was taken by resolution approved the 25th day of September, 2012.

APPROVAL OF BOARD OF COUNTY COMMISSIONERS

The Board of County Commissioners of Burleigh County, North Dakota, has approved the subdivision of land as shown on the annexed plat, has accepted the dedication of all streets shown thereon, has approved the grounds as shown on the annexed plat as an amendment to the master plan of Burleigh County, North Dakota. The foregoing action of the Board of County Commissioners of Burleigh County, North Dakota, was taken by resolution approved the 1st day of October, 2012.

SURVEYOR'S CERTIFICATE

I, Todd W. Norton, a Registered Land Surveyor in the State of North Dakota, hereby certify the annexed plat is a true copy of the notes of a survey performed under my supervision and the monuments shown hereon are accurate and set, and that all dimensional and geodetic information shown hereon is true and correct to the best of my knowledge and belief.

Todd W. Norton
Registered Land Surveyor
N.D. Registration No. 4624

STATE OF NORTH DAKOTA)
(SS)
COUNTY OF BURLEIGH)

On this 6 day of Dec., 2012, before me personally appeared Todd W. Norton, known to me to be the person described in and who executed the foregoing Surveyor's Certificate and he acknowledged to me that he executed the same.

Sheryl Todd
Sheryl Todd, Notary Public:
Burleigh County, North Dakota
My commission expires: 9/2/14

STATE OF NORTH DAKOTA)
(SS)
COUNTY OF BURLEIGH)

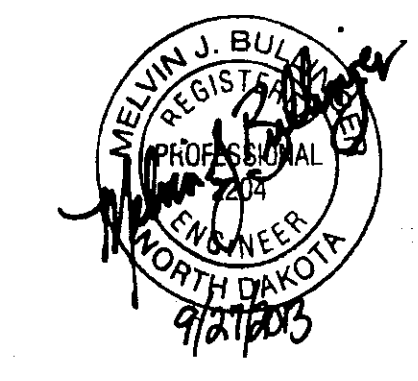
On this 6 day of Dec., 2012, before me personally appeared Larry A. Kolbo and Margo A. Kolbo, known to me to be the persons who are described in and whose names are subscribed to the within instrument and they acknowledged to me that they executed the same.

Sheryl Todd
Sheryl Todd, Notary Public:
Burleigh County, North Dakota
My commission expires: 9/2/14

On this 6 day of Dec., 2012, before me personally appeared Amos Kolbo and Carly Kolbo, known to me to be the persons who are described in and whose names are subscribed to the within instrument and they acknowledged to me that they executed the same.

Sheryl Todd
Sheryl Todd, Notary Public:
Burleigh County, North Dakota
My commission expires: 9/2/14

Wayne Lee Yeager - Chairman
Carl D. Hokenstad - Secretary



Melvin J. Bullinger
City Engineer

Kolbo Third
Subdivision
Burleigh County

BASIS OF BEARING IS NORTH DAKOTA STATE PLANE
COORDINATE SYSTEM. NAD 83 ND ZONE 3302.
ALL DISTANCES ARE EXPRESSED AS GROUND DISTANCES.



Advanced Engineering and Environmental Services, Inc.
1815 Schafer Street, Suite 301, Bismarck, ND
Ph: 701-221-0530 Fax: 701-221-0531 Web: www.AE2S.com