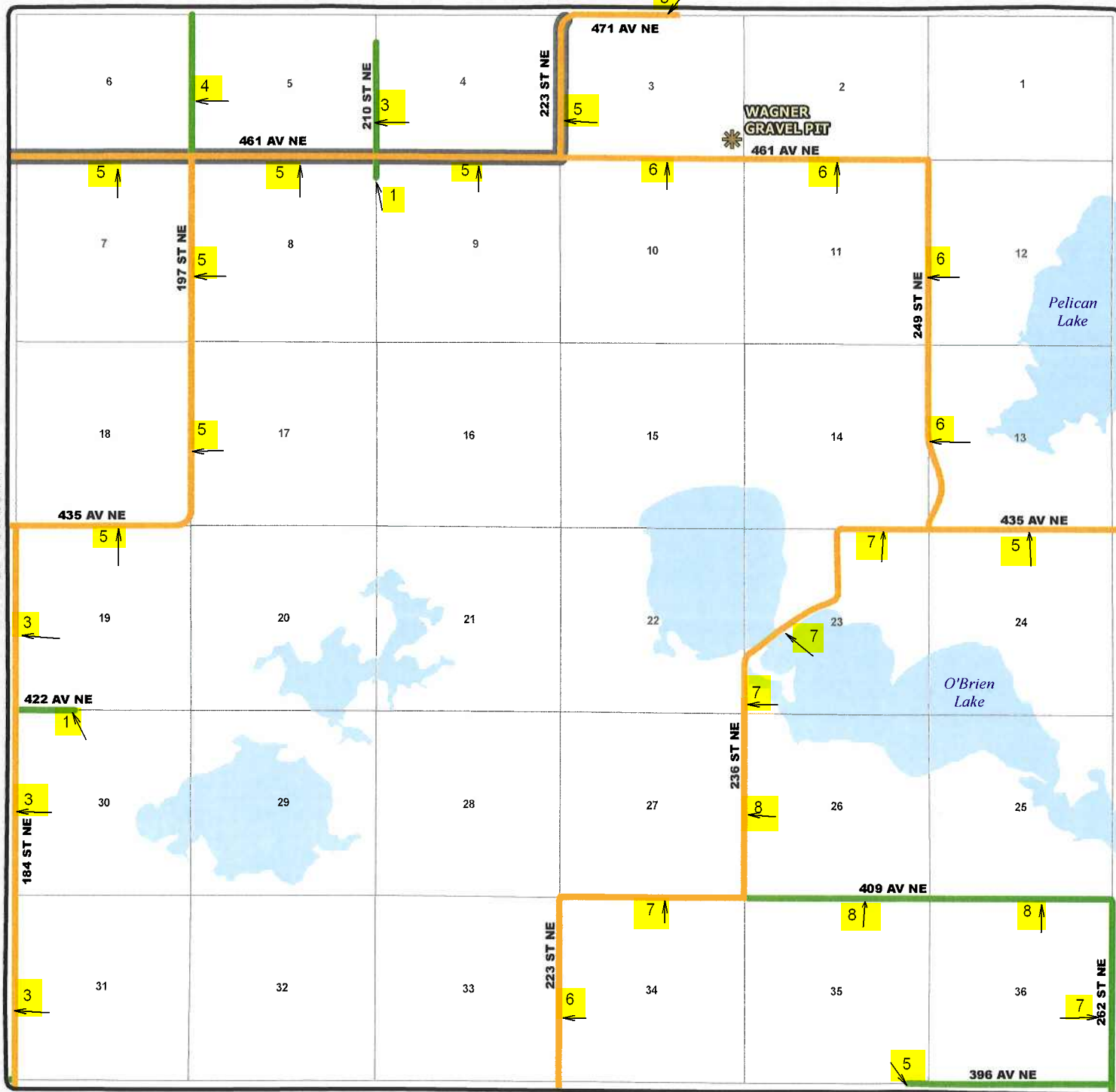




TOWNSHIP ROAD MAINTENANCE MAP SCHRUNK #12 (T144N R77W)

N
12/08/2014

SHERIDAN COUNTY



CANFIELD TOWNSHIP

STEIBER TOWNSHIP

FLORENCE LAKE TOWNSHIP

County Gravel Road	Gravel - Winter Maintenance	Paved - Winter Maintenance	State & Federal Highways	Bridge
County Paved Road	Gravel - Year Round Maintenance	Paved - Year Round Maintenance	Federal Aid Road	Water Pipe
Gravel - Summer Maintenance	Paved - Summer Maintenance	Township/County Jurisdiction	Other Roads	