

STATE OF NORTH DAKOTA
 COUNTY OF BURLEIGH
 HEREBY CERTIFY THAT THE WITHIN INSTRUMENT
 WAS FILED IN THIS OFFICE FOR RECORD ON
 8-1-80 AT 2:40 P.M. AND
 RECORDED AS DOCUMENT NO. 316039
 REGISTER OF DEEDS



S & W 2ND. ADDITION
 TO
CITY OF LINCOLN

PART N. 1/2, SEC. 19, T. 138N., R. 79W., BURLEIGH COUNTY, NORTH DAKOTA
 ZONED R-1 7-10-80 17.091 Ac.

OWNERS CERTIFICATE & DEDICATION

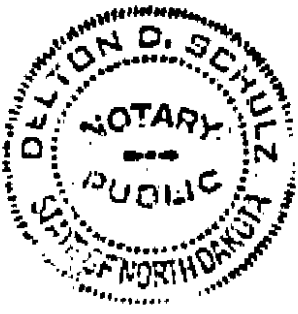
Know all men by these presents that Albinus Scherr and Rosemary Weigel being the owners of the property shown on the above plat have caused that portion described and shown on the plat to be surveyed and platted as "S & W 2nd Addition" and do so dedicate streets, including all sewers and culverts and other public utilities shown hereon or not to the public use forever.

It also dedicated easements to run with the land for water, sewer, gas, electric, telephone and other public utilities or services under those certain strips of land designated as "utility easements."

Albinus Scherr
 Albinus Scherr
Rosemary Weigel
 Rosemary Weigel

STATE OF NORTH DAKOTA SS
 COUNTY OF BURLEIGH

On this 7th day of AUGUST, 1980, before me personally appeared Albinus Scherr and Rosemary Weigel of Bismarck, North Dakota and acknowledged the signing of the foregoing plat to be their voluntary act and deed. In testimony whereof, I have set my hand and seal on the day and date written above.



Delton D. Schultz
 Delton D. Schultz, Notary Public
 Burleigh County, North Dakota
 Commission Expires 2-8-83

SURVEYORS CERTIFICATE

I, Delton D. Schultz, a registered professional engineer and land surveyor in the state of North Dakota hereby certify that the above plat is a true copy of the notes of a survey performed under my supervision and completed on 13th day of AUGUST, 1980, that all information shown hereon is true to the best of my knowledge and belief.

Delton D. Schultz
 Delton D. Schultz, P.E. & L.S.
 Reg. No. 1088

STATE OF NORTH DAKOTA SS
 COUNTY OF BURLEIGH

On this 13th day of August, 1980, before me personally appeared Delton D. Schultz, known to me to be the person who executed the foregoing surveyor's certificate and he acknowledged to me that he executed the same of his own free will and deed.

Debra Joergs
 Debra Joergs, Notary Public
 Burleigh County, North Dakota
 Commission Expires 2-16-83

APPROVAL OF CITY COUNCIL

The City Council of the City of Lincoln, North Dakota, has approved the subdivision of land as shown on the plat, has accepted the dedication of all streets shown thereon, and has approved the grounds as shown on the plat as an amendment to the master plan of Lincoln.

The foregoing action of the City Council of Lincoln, North Dakota, was taken by resolution approved the 22 day of July, 1980.

Karen K. Daly
 Auditor
 Attest
Olivia K. Nelson
 Chairman

PLANNING COMMISSION APPROVAL

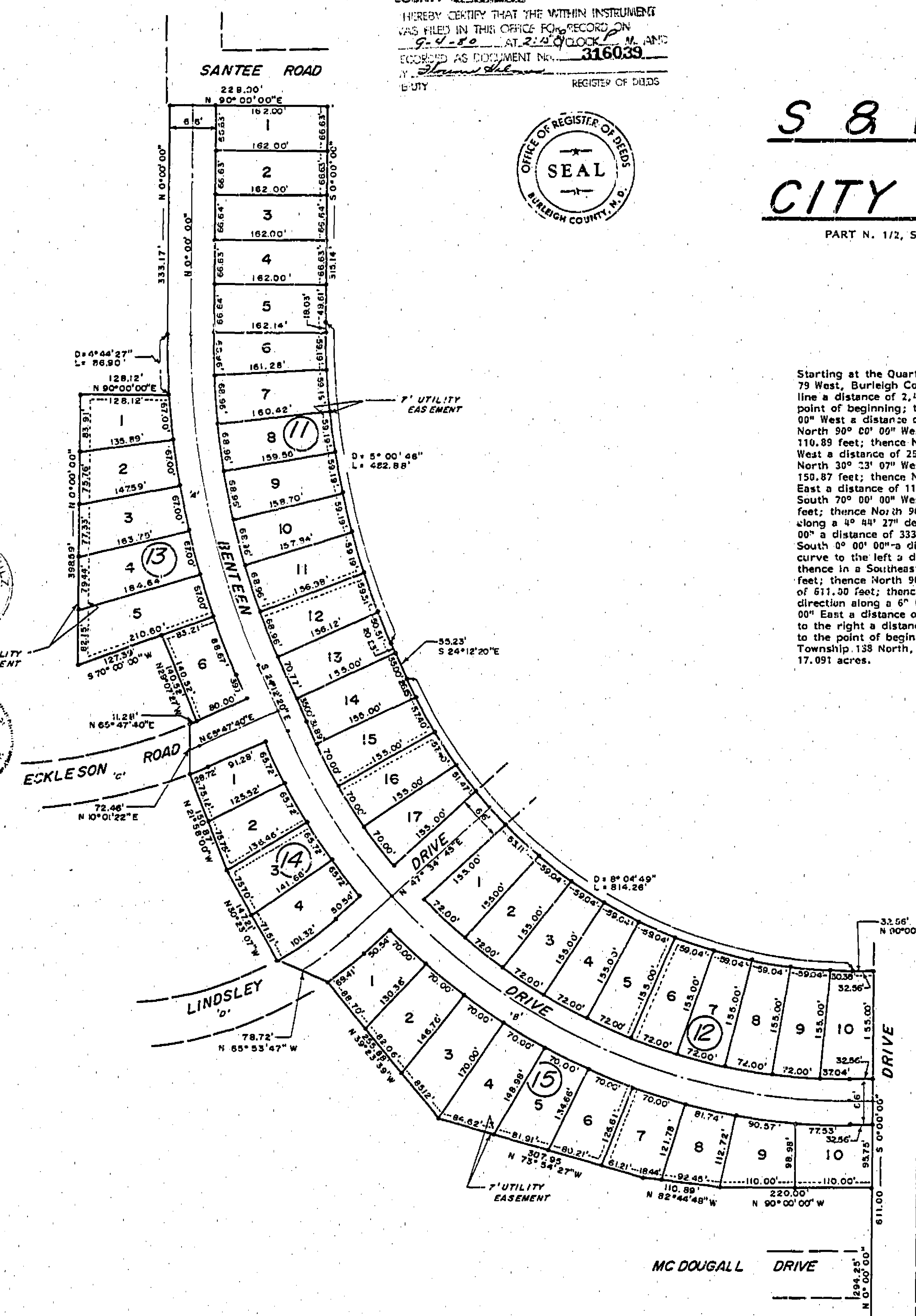
The subdivision of land as shown on the plat has been approved by the Planning Commission of the City of Lincoln on the 22nd day of July, 1980, in accordance with the laws of the state of North Dakota, ordinances of the county of Burleigh, and regulations adopted by the said Planning Commission. In witness whereof are set the hands and seals of the Chairman and secretary of the Planning Commission of the City of Lincoln.

Margie Haerner
 Secretary
David Johnson
 Chairman

APPROVAL OF CITY ENGINEER

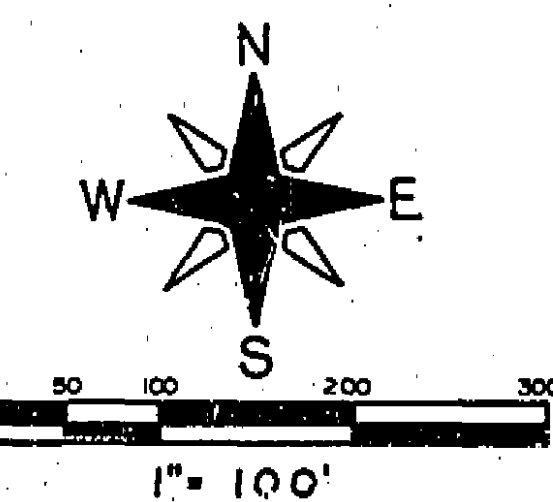
I, Merrill Rivinius, City Engineer of the City of Lincoln, North Dakota, hereby approve the above subdivision.

Merrill Rivinius
 Merrill Rivinius, City Engineer



DESCRIPTION

Starting at the Quarter Corner common to Sections 19 and 20, Township 138 North, Range 79 West, Burleigh County, North Dakota: Thence South 89° 32' 43" West along the quarter line a distance of 2,405.82 feet; thence North 0° 00' 00" a distance of 171.48 feet to the point of beginning; thence North 0° 00' 00" a distance of 120.00 feet; thence North 90° 00' 00" West a distance of 66.00 feet; thence North 0° 00' 00" a distance of 294.25 feet; thence North 90° 00' 00" West a distance of 220.00 feet; thence North 32° 44' 48" West a distance of 110.89 feet; thence North 73° 54' 27" West a distance of 307.95 feet; thence North 38° 23' 39" West a distance of 255.86 feet; thence North 65° 53' 47" West a distance of 78.72 feet; thence North 30° 33' 07" West a distance of 147.21 feet; thence North 21° 58' 09" West a distance of 150.87 feet; thence North 13° 01' 23" East a distance of 72.46 feet; thence North 65° 47' 48" East a distance of 11.28 feet; thence North 29° 07' 27" West a distance of 140.52 feet; thence South 70° 00' 00" West a distance of 127.39 feet; thence North 0° 00' 00" a distance of 396.49 feet; thence North 90° 00' 00" East a distance of 128.12 feet; thence in a Northerly direction along a 4° 44' 27" degree curve to the right a distance of 86.98 feet; thence North 0° 00' 00" a distance of 333.17 feet; thence North 30° 00' 00" East a distance of 228.00 feet; thence South 0° 00' 00" a distance of 315.14 feet; thence in a Southerly direction along a 5° 00' 46" curve to the left a distance of 482.38 feet; thence South 24° 12' 20" East a distance of 514.26 feet; thence in a Southeastly direction along a 8° 00' 49" curve to the left a distance of 814.26 feet; thence North 90° 00' 00" East a distance of 32.56 feet; thence South 0° 00' 00" a distance of 511.00 feet; thence North 90° 00' 00" East a distance of 124.63 feet; thence in a Easterly direction along a 6° 00' 53" curve to the left a distance of 694.69 feet; thence South 65° 17' 00" East a distance of 129.44 feet; thence in a Southwesterly direction along a 5° 20' 31" curve to the right a distance of 833.85 feet; thence North 90° 00' 00" West a distance of 58.63 feet to the point of beginning. The above described tract lies in the North Half of Section 19, Township 138 North, Range 79 West, 5th P.M., Burleigh County, North Dakota and contains 17.091 acres.



- NOTE:**
1. Building setback to be 25' - 0".
 2. Utility easements to be 14' - 0", unless otherwise noted.

CURVE DATA

Curve	Δ	T	R	L	D
A	28° 12' 20"	252.00'	1175.53'	496.63	4,873885°
B	65° 47' 40"	580.67'	897.67'	1030.82	6,3827778°
C	24° 12' 20"	150'	699.52'	295.52	8,190707°
D	42° 25' 15"	200'	515.35'	381.36	11,117842°

OWNER:
 ALBINUS SCHERR
 417 SOUTH 17TH STREET
 BISMARCK, NORTH DAKOTA

ENGINEERING:
 SCHULZ ENGINEERING
 815 AVENUE A EAST
 BISMARCK, NORTH DAKOTA