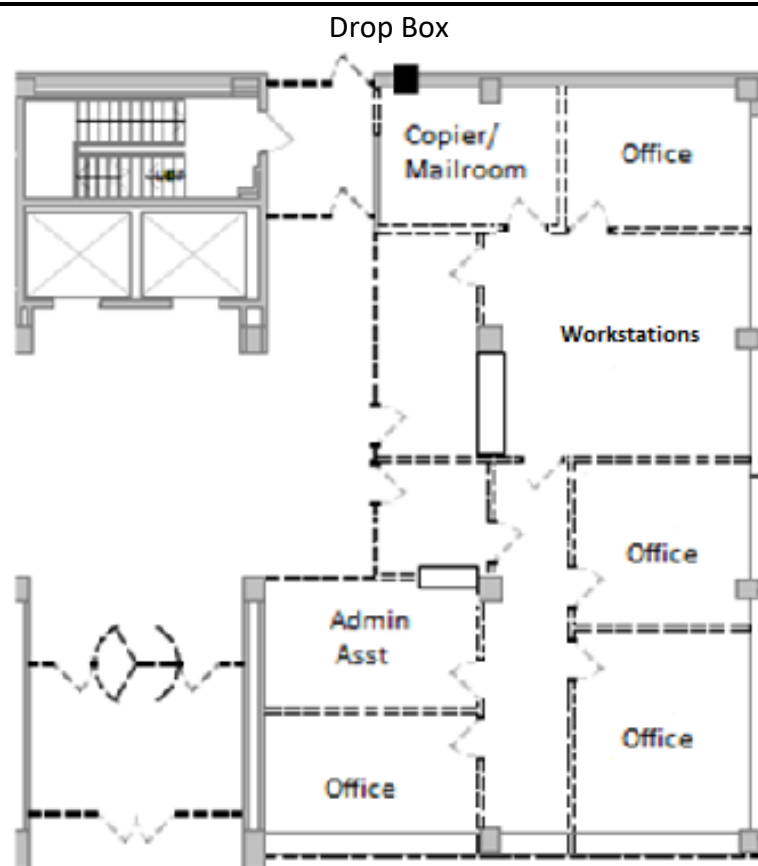


Basement

Existing Storage Room: New HVAC, Lighting, Additional Electrical
 Cover or replace existing flooring from Storage Room to elevator
 Renovate restrooms for ADA compliance (if necessary)

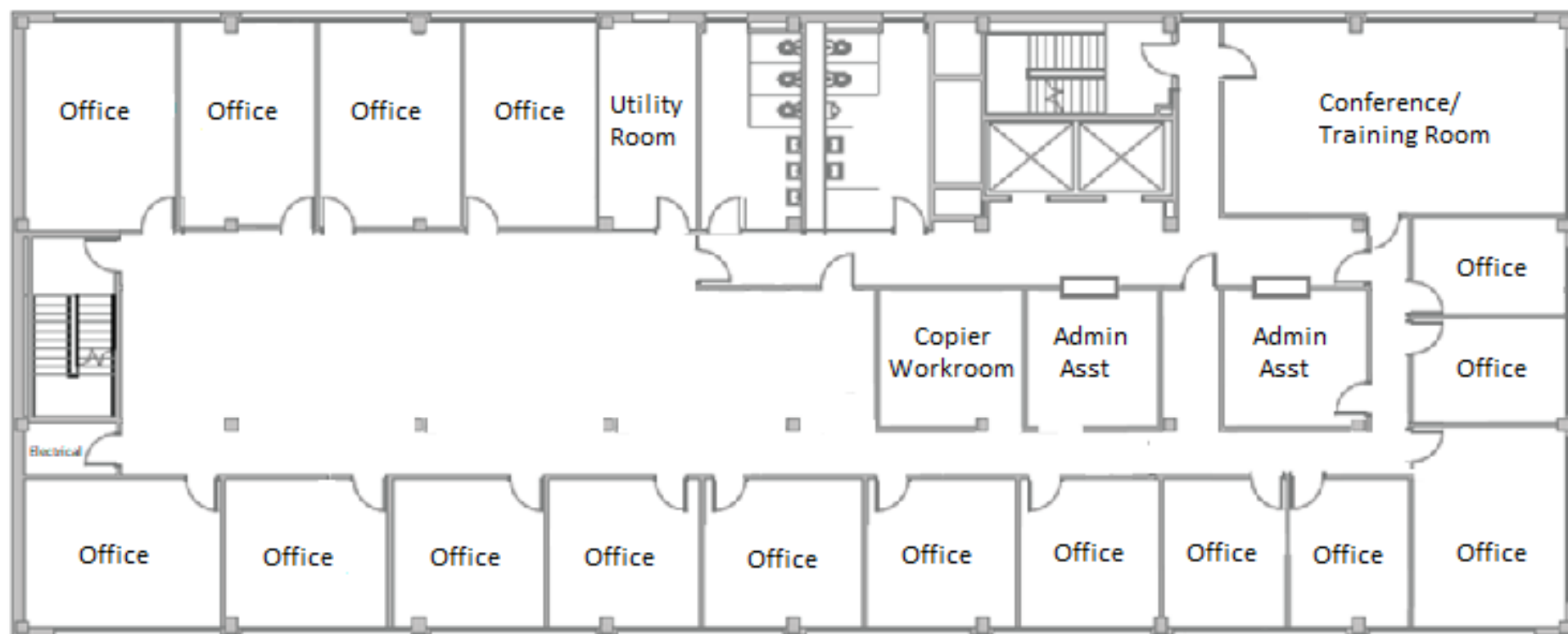


1st Floor

- Mailroom/Drop Box
- Renovate restrooms for ADA compliance
- ADA access next to locked rotating door (north side)
- Lock rotating door
- Install intercom/call button in vestibule on north wall
- Hard surfaces in elevators
- Lighting replacement (foyer)
- Office flooring, lighting, paint

2nd Floor

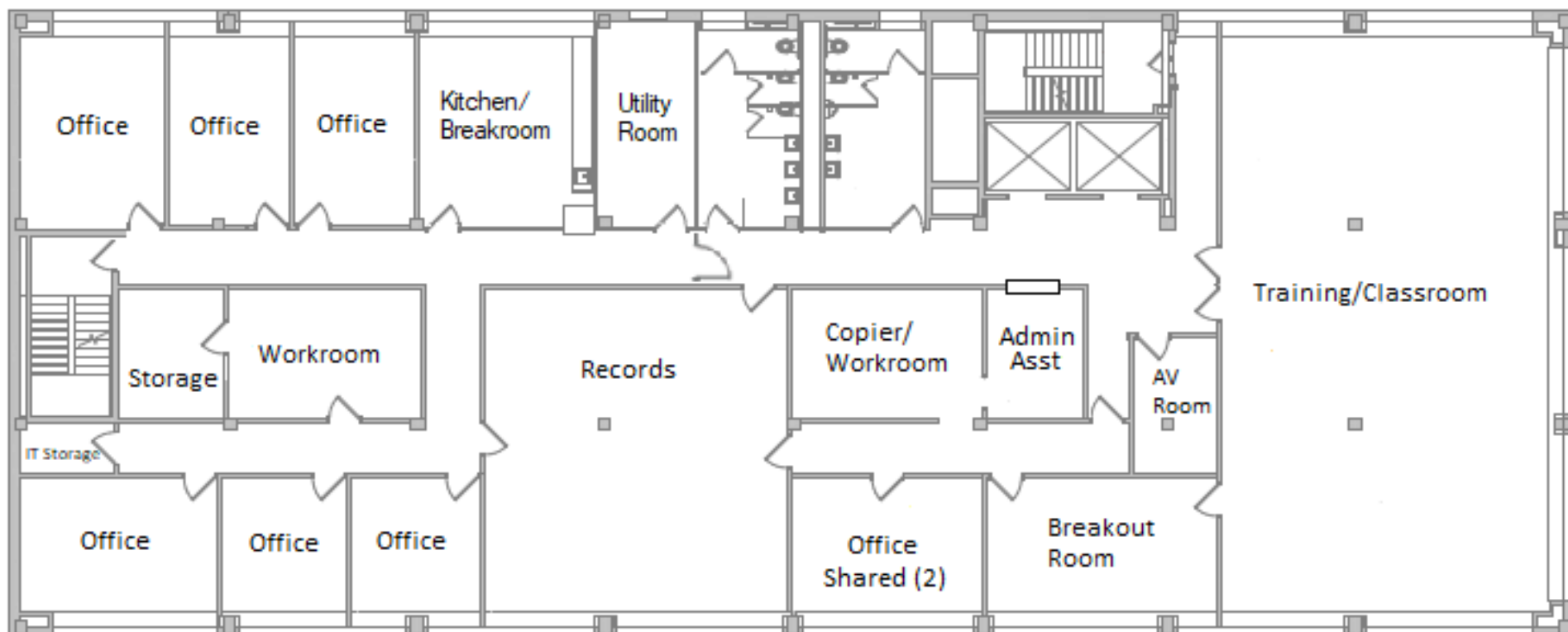
Human Service Zone (Social Services) – No changes



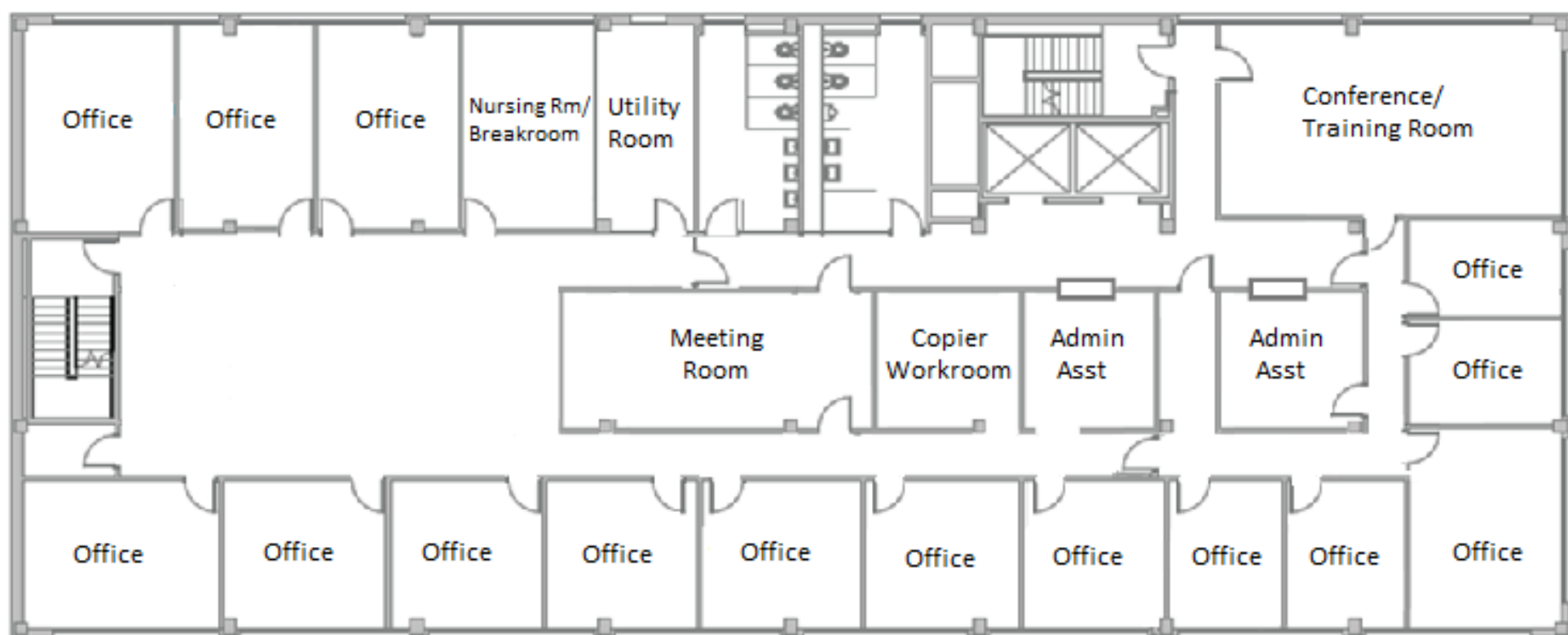
3rd Floor

4th Floor

Human Service Zone (Social Services) – No changes



5th Floor



6th Floor

Miscellaneous

Exterior

- Remove and backfill underground 10,000-gallon tank
- Add generator
- Lighting under canopy and exterior exits
- ADA accessible front entry

Signage

- All floors
- Exterior (name the building)

Sprinkler System

- All floors

IT Room

- Anti-static floor in server and IT workroom
- No water lines above server room and IT workroom
- Supplemental AC in server room

Cameras

- All exterior entrances/exits
- Outside elevators (all floors)

Key Fob

- All exterior entrances
- Doors immediately off the elevator on all floors
- Basement IT areas and Storage Room
- IT Server Room
- IT Workroom