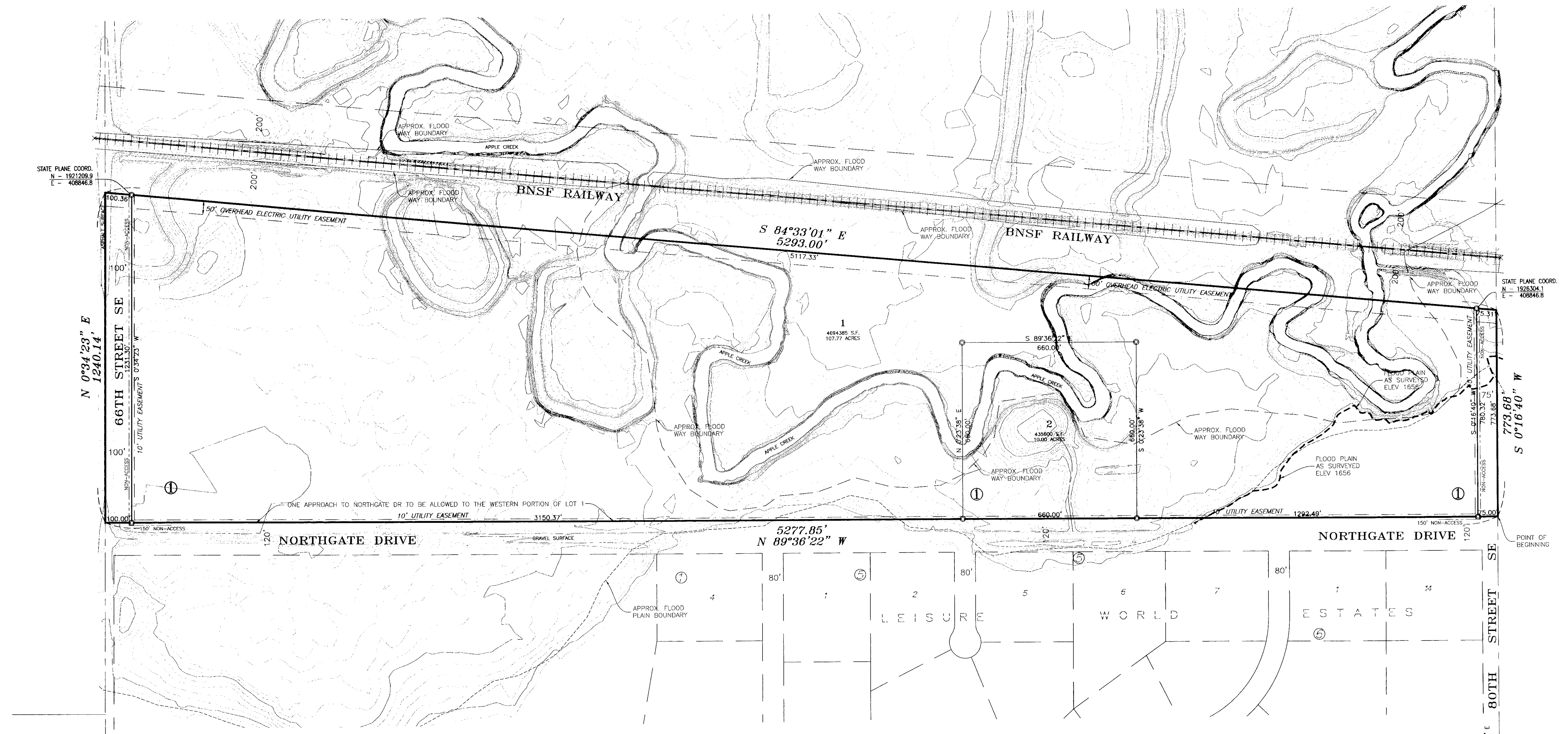


# GEMUENDEN FIRST SUBDIVISION

AN UNPLATTED PORTION OF SECTION 8, TOWNSHIP 138 NORTH, RANGE 79 WEST BURLEIGH COUNTY, NORTH DAKOTA

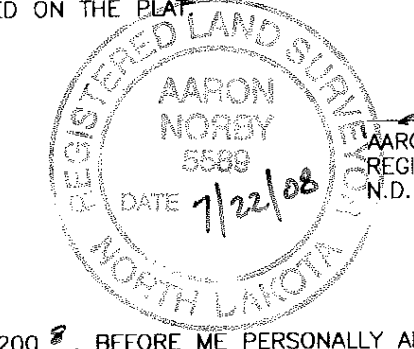


### DESCRIPTION

AN UNPLATTED PORTION OF SECTION 8, TOWNSHIP 138 NORTH, RANGE 79 WEST BURLEIGH COUNTY, NORTH DAKOTA, MORE PARTICULARLY DESCRIBED AS FOLLOWS:  
 COMMENCING AT THE SOUTHWEST CORNER OF SAID SECTION 8, THENCE ALONG THE EAST LINE OF SAID SECTION 8, N 0°16'40" E, 2040.00 FEET TO THE POINT OF BEGINNING; THENCE FROM SAID POINT OF BEGINNING ALONG THE NORTH RIGHT OF WAY LINE OF NORTHGATE DRIVE, N 89°36'22" W, 5277.85 FEET TO THE WEST LINE OF SAID SECTION 8; THENCE ALONG SAID WEST LINE, N 0°34'23" E, 1240.14 FEET TO THE SOUTH RIGHT OF WAY LINE BURLINGTON NORTHERN SANTA FE RAILROAD TRACKS; THENCE ALONG SAID SOUTH RIGHT OF WAY, S 84°33'01" E, 5293.00 FEET TO THE EAST LINE OF SAID SECTION 8; THENCE ALONG SAID EAST LINE, S 0°16'40" W, 773.69 FEET TO THE SAID POINT OF BEGINNING.  
 SAID TRACT CONTAINS 5,311,831 SQUARE FEET OR 121.94 ACRES MORE OR LESS.

### SURVEYOR'S CERTIFICATE

I, AARON T. NORBY, A REGISTERED PROFESSIONAL LAND SURVEYOR IN THE STATE OF NORTH DAKOTA, HEREBY CERTIFY THAT THE ANNEXED PLAT IS A CORRECT REPRESENTATION OF THE NOTES OF A SURVEY PERFORMED UNDER MY SUPERVISION AND COMPLETED ON THE 17TH DAY OF DECEMBER, 2007, THAT ALL DISTANCES ARE CORRECT AND MONUMENTS ARE PLACED IN THE GROUND AS SHOWN AND THAT THE OUTSIDE BOUNDARY LINES ARE CORRECTLY DESIGNATED ON THE PLAT.



STATE OF NORTH DAKOTA )  
 COUNTY OF BURLEIGH )

ON THIS 22<sup>nd</sup> DAY OF July, 2008, BEFORE ME PERSONALLY APPEARED AARON T. NORBY, KNOWN TO ME TO BE THE PERSON DESCRIBED IN AND WHO EXECUTED THE WITHIN CERTIFICATE AND HE ACKNOWLEDGED TO ME THAT HE EXECUTED THE SAME.

DAMON JORGENSEN  
 Notary Public  
 State of North Dakota  
 My Commission Expires Feb. 17, 2010

### OWNER'S CERTIFICATE AND DEDICATION

KNOW ALL MEN BY THESE PRESENTS THAT JEFF GREEK BEING THE OWNER AND PROPRIETOR OF A PORTION OF THE PROPERTY SHOWN ON THE ANNEXED PLAT HAVE CAUSED THAT PORTION DESCRIBED HEREON TO BE SURVEYED AND PLATTED AS "GEMUENDEN FIRST SUBDIVISION", AND DO SO DEDICATE STREETS AS SHOWN HEREON INCLUDING ALL SEWER, CULVERTS, WATER AND GAS DISTRIBUTION LINES AND OTHER PUBLIC UTILITY LINES, WHETHER SHOWN HEREON OR NOT, TO THE PUBLIC USE FOREVER.  
 HE ALSO DEDICATES EASEMENTS TO RUN WITH THE LAND, FOR GAS, ELECTRIC, TELEPHONE AND OTHER PUBLIC UTILITIES OR SERVICES ON, ACROSS OR UNDER THOSE CERTAIN STRIPS OF LAND DESIGNATED HEREON.

STATE OF Colorado )  
 COUNTY OF Douglas )

JEFF GREEK  
 4360 CASTLE BUTTE DR.  
 CASTLE ROCK, CO 80109

ON THIS 29<sup>th</sup> DAY OF July, 2008, BEFORE ME PERSONALLY APPEARED JEFF GREEK, KNOWN TO ME TO BE THE PERSON DESCRIBED IN AND WHO EXECUTED THE WITHIN CERTIFICATE AND HE ACKNOWLEDGED TO ME THAT HE EXECUTED THE SAME.

Nancy J. Ransom  
 Douglas County, Colorado  
 My Commission Expires March 6, 2012

### APPROVAL OF CITY PLANNING COMMISSION

THE SUBDIVISION OF LAND AS SHOWN ON THE ANNEXED PLAT HAS BEEN APPROVED BY THE PLANNING COMMISSION OF THE CITY OF BISMARCK, ON THE 21<sup>st</sup> DAY OF FEBRUARY, 2008, IN ACCORDANCE WITH THE LAWS OF THE STATE OF NORTH DAKOTA, ORDINANCES OF THE CITY OF BISMARCK AND REGULATIONS ADOPTED BY THE SAID PLANNING COMMISSION.

IN WITNESS WHEREOF ARE SET THE HANDS AND SEALS OF THE CHAIRMAN AND SECRETARY OF THE PLANNING COMMISSION OF THE CITY OF BISMARCK.

Wayne Lee Yeager - Chairman

Carl D. Hokenstad - Secretary

### APPROVAL OF BOARD OF CITY COMMISSIONERS

THE BOARD OF CITY COMMISSIONERS OF THE CITY OF BISMARCK, NORTH DAKOTA HAS APPROVED THE SUBDIVISION OF LAND AS SHOWN ON THE ANNEXED PLAT, HAS ACCEPTED THE DEDICATION OF ALL STREETS SHOWN THEREON, HAS APPROVED THE GROUNDS AS SHOWN ON THE ANNEXED PLAT AS AN AMENDMENT TO THE MASTER PLAN OF THE CITY OF BISMARCK.

THE FOREGOING ACTION OF THE CITY COMMISSION OF BISMARCK, NORTH DAKOTA WAS TAKEN BY RESOLUTION APPROVED THE 5<sup>th</sup> DAY OF APRIL, 2008.

W. C. Wocken - City Administrator

### APPROVAL OF CITY ENGINEER

I, MELVIN J. BULLINGER, CITY ENGINEER OF THE CITY OF BISMARCK, NORTH DAKOTA, HEREBY APPROVE "GEMUENDEN FIRST SUBDIVISION" AS SHOWN ON THE ANNEXED PLAT.

Melvin J. Bullinger - City Engineer

### APPROVAL OF BOARD OF COUNTY COMMISSIONERS

THE BOARD OF COUNTY COMMISSIONERS OF BURLEIGH COUNTY, NORTH DAKOTA, HAS APPROVED THE SUBDIVISION OF LAND AS SHOWN ON THE ANNEXED PLAT, HAS ACCEPTED THE DEDICATION OF ALL STREETS SHOWN THEREON, HAS APPROVED THE GROUNDS AS SHOWN ON THE ANNEXED PLAT AS AN AMENDMENT TO THE MASTER PLAN OF BURLEIGH COUNTY, NORTH DAKOTA, AND DOES HEREBY VACATE ANY PREVIOUS PLATTING WITHIN THE BOUNDARY OF THE ANNEXED PLAT.  
 THE FOREGOING ACTION OF THE BOARD OF COUNTY COMMISSIONERS OF BURLEIGH COUNTY, NORTH DAKOTA, WAS TAKEN BY RESOLUTION APPROVED THE 5<sup>th</sup> DAY OF MAY, 2008.

Jeff Wozniak - Chairman

Kevin J. Glatt - County Auditor

### PLAT INFORMATION

- NUMBER OF LOTS: 2
- LOT ACREAGE - 117.77 ACRES
- R.O.W. ACREAGE - 4.17 ACRES
- TOTAL ACREAGE - 121.94 ACRES

### ZONING INFORMATION

CURRENT ZONING: AG  
 REQUESTED ZONING: RR5

### PROJECT ENGINEER:

KADRMAS, LEE & JACKSON, INC.  
 3237 EAST BROADWAY  
 BISMARCK, NORTH DAKOTA 58501  
 PHONE 355-8400

### PROJECT OWNER:

JEFF GREEK  
 4360 CASTLE BUTTE DR.  
 CASTLE ROCK, CO 80109

### NOTE:

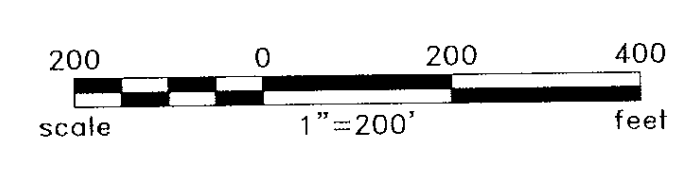
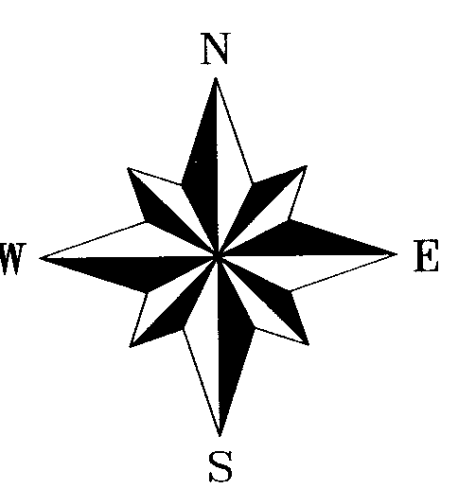
NO STRUCTURE SHALL BE CONSTRUCTED WITHIN THE FLOODWAY.

Taxes and special assessments paid, all liens created under section 57-03.03.5 validated, if any, and TRANSFERRED accepted this 22<sup>nd</sup> day of July, 2008.  
 Douglas County Auditor  
 Deputy, Burleigh County Auditor

### NOTE:

THE WATER SERVICE AGREEMENT BETWEEN THE CITY OF BISMARCK AND SOUTH CENTRAL WATER DISTRICT WILL ALLOW THE PROVISION OF WATER SERVICE TO GEMUENDEN FIRST SUBDIVISION FOR A PERIOD OF 10 YEARS AND SUBSEQUENT TO THAT TIME, THE CITY MAY, UPON A ONE-YEAR NOTICE, REQUIRE SOUTH CENTRAL WATER DISTRICT TO DISCONTINUE WATER SERVICE IF CITY WATER SERVICE IS AVAILABLE.

Kadrmars  
 Lee &  
 Jackson  
 Engineers Surveyors  
 Planners



DATE: MAY 2008  
 TOPOGRAPHIC DATUM: NGVD 88  
 BENCHMARK: CP-B58-3 ELEV 1891.79  
 BASIS OF BEARING: STATE PLANE

GEMUENDEN FIRST SUBDIVISION