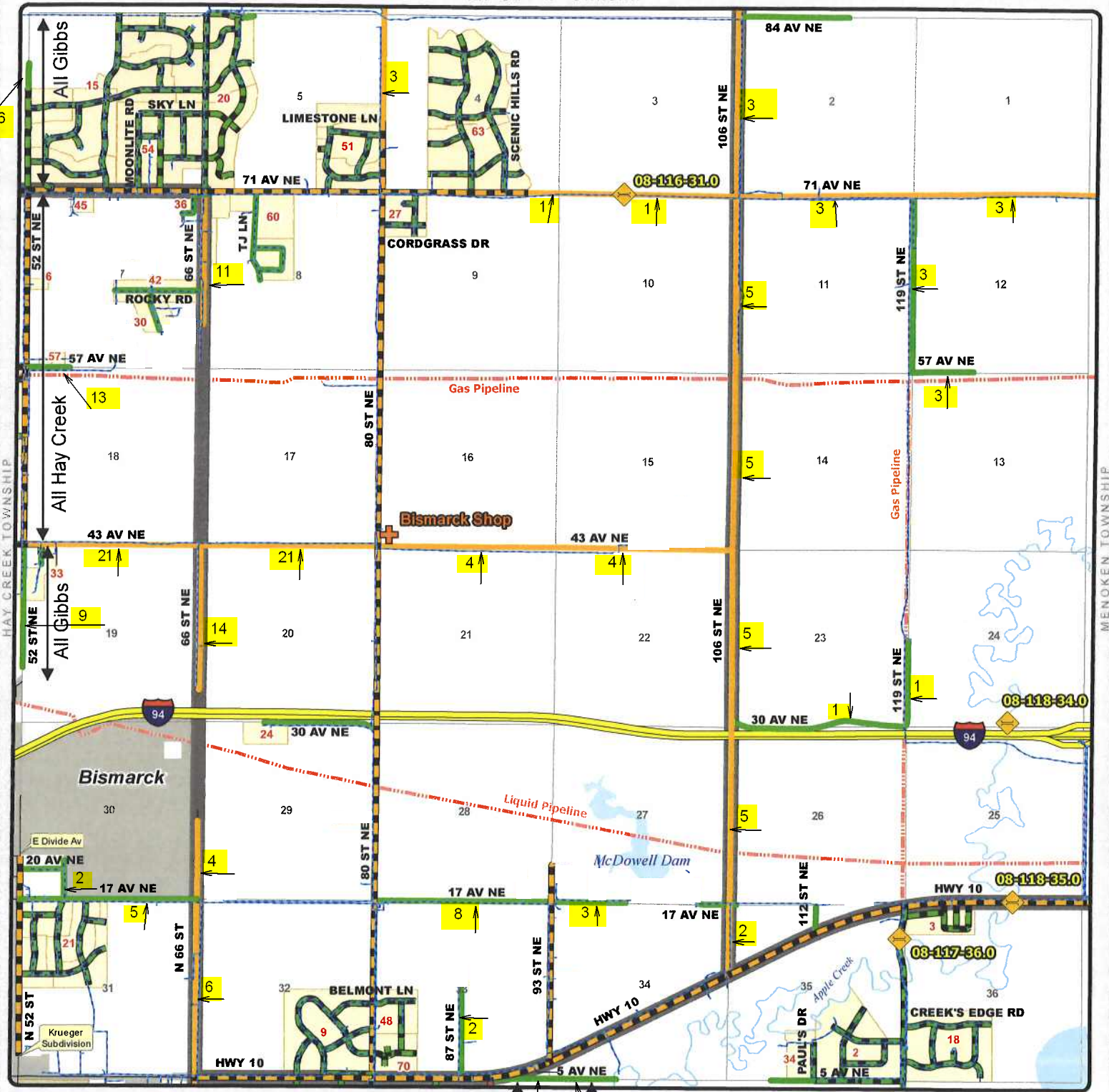


TOWNSHIP ROAD MAINTENANCE MAP GIBBS #32 (T139N R79W)

02/27/2017



NAUGHTON TOWNSHIP



APPLE CREEK TOWNSHIP

0.11mi Apple Creek 0.58mi Gibbs

- | | | | | |
|-----------------------------|---------------------------------|--------------------------------|--------------------------|------------|
| County Gravel Road | Gravel - Winter Maintenance | Paved - Winter Maintenance | State & Federal Highways | Bridge |
| County Paved Road | Gravel - Year Round Maintenance | Paved - Year Round Maintenance | Federal Aid Road | Water Pipe |
| Gravel - Summer Maintenance | Paved - Summer Maintenance | Township/County Jurisdiction | Other Roads | |

GIBBS SUBDIVISIONS

CODE	NAME	SECTION
2	APPLE CREEK RIDGE SUBDIVISION	35
3	APPLE VALLEY SUBDIVISION	36
6	BISCHOFF ACRES	7
9	BROOKFIELD ESTATES	32
15	COUNTRY CREEK SUBDIVISION	6
15	COUNTRY CREEK 2ND SUBDIVISION	6
15	COUNTRY CREEK 3RD SUBDIVISION	6
15	COUNTRY CREEK 4TH SUBDIVISION	6
15	COUNTRY CREEK 5TH SUBDIVISION	6
18	COUNTRY MEADOWS SUBDIVISION	36
20	COUNTRY RIDGE 1ST SUBDIVISION	5
20	COUNTRY RIDGE 2ND SUBDIVISION	5
21	COUNTRYSIDE ESTATES SUBDIVISION	31
21	COUNTRYSIDE ESTATES 2ND SUBDIVISION	31
21	COUNTRYSIDE ESTATES 3RD SUBDIVISION	31
21	COUNTRYSIDE ESTATES 4TH SUBDIVISION	31
21	COUNTRYSIDE ESTATES 5TH SUBDIVISION	31
24	DAUENHAUER ADDITION	29
27	EAST MEADOWS ESTATES	9
30	FOREST PARK 1ST SUBDIVISION	8 7
33	HUBER SUBDIVISION	5 19
34	JASKOWIAK SUBDIVISION	35
36	JRJ ADDITION	4 7
42	NORTH FORTY ESTATES REPLAT	9 7
45	PAPACHEKS SUBDIVISION	7
48	RAINBOW ACRES	33
51	ROCK CREEK 1ST SUBDIVISION	5
51	ROCK CREEK 2ND SUBDIVISION	5
51	ROCK CREEK 3RD SUBDIVISION	5
51	ROCK CREEK 4TH SUBDIVISION	5
54	SKYLINE ESTATES	6
57	TRIANGLE SQUARE SUBDIVISION	7
57	TRIANGLE SQUARE 2ND SUBDIVISION	7
60	TJ RANCH ESTATES	13 8
60	TJ RANCH ESTATES 2ND ADDITION	8
60	TJ RANCH ESTATES REPLAT L1&2 B1	8
60	TJ RANCH ESTATES REPLAT L6&7 B2	8
63	COUNTRY HILLS SUBDIVISION	4
63	COUNTRY HILLS 2ND SUBDIVISION	4
70	WILLOW VIEW ESTATES	33