

# CORWIN SUBDIVISION

PART OF SECTION 21, T. 140 N., R. 81 W.

BURLEIGH COUNTY, NORTH DAKOTA

## DESCRIPTION

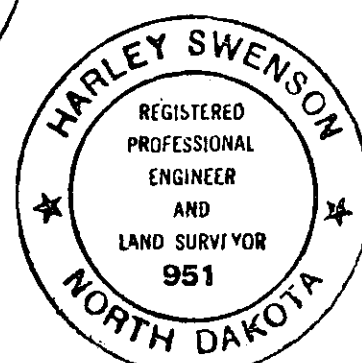
ALL THAT PART OF GOVERNMENT LOT 4 OF SECTION 21, TOWNSHIP 140 NORTH, RANGE 81 WEST OF THE 5TH PRINCIPAL MERIDIAN, BURLEIGH COUNTY, NORTH DAKOTA THAT LIES WITHIN THE FOLLOWING DESCRIBED TRAVERSE:  
BEGINNING ON THE EAST LINE OF SECTION 21, A DISTANCE OF 195.00 FEET NORTH OF THE SOUTHEAST CORNER OF SECTION 24; THENCE NORTH 90 DEGREES 00 MINUTES 00 SECONDS WEST AND PERPENDICULAR TO SAID EAST SECTION LINE A DISTANCE OF 690 FEET, MORE OR LESS TO THE EAST BANK OF THE MISSOURI RIVER; THENCE NORTHERLY ALONG SAID EAST RIVER BANK A DISTANCE OF 430 FEET, MORE OR LESS TO A LINE PERPENDICULAR TO THE EAST SECTION LINE; THENCE NORTH 90 DEGREES 00 MINUTES 00 SECONDS EAST ALONG SAID LINE A DISTANCE OF 830 FEET, MORE OR LESS TO THE EAST SECTION LINE; THENCE SOUTH 0 DEGREES 00 MINUTES 00 SECONDS EAST ALONG SAID SECTION LINE A DISTANCE OF 405.00 FEET TO THE POINT OF BEGINNING.  
THE ABOVE DESCRIBED TRACT OF LAND CONTAINS 6.9 ACRES, MORE OR LESS.

## SURVEYOR'S CERTIFICATE

I, HARLEY SWENSON, A REGISTERED PROFESSIONAL ENGINEER AND LAND SURVEYOR IN THE STATE OF NORTH DAKOTA HEREBY CERTIFY THAT THE ANNEXED PLAT IS A TRUE COPY OF THE NOTES OF A SURVEY PERFORMED UNDER MY SUPERVISION AND COMPLETED ON AUGUST 28, 1990, AND THAT ALL INFORMATION SHOWN HEREON IS TRUE AND CORRECT TO THE BEST OF MY KNOWLEDGE AND BELIEF.

SWENSON, HAGEN & CO.  
CONSULTING ENGINEERS  
P.O. BOX 1135 - 909 BASIN AVENUE  
BISMARCK, NORTH DAKOTA 58502

HARLEY SWENSON  
REGISTERED PROFESSIONAL  
ENGINEER & LAND SURVEYOR  
ND REGISTRATION NO. 951

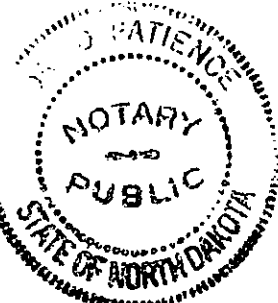


STATE OF NORTH DAKOTA)

COUNTY OF BURLEIGH )

ON THIS 8<sup>th</sup> DAY OF DECEMBER, 1990, BEFORE ME PERSONALLY APPEARED HARLEY SWENSON, KNOWN TO ME TO BE THE PERSON WHO EXECUTED THE FOREGOING SURVEYOR'S CERTIFICATE AND ACKNOWLEDGED TO ME THAT HE EXECUTED THE SAME.

DAVID PATIENCE - NOTARY PUBLIC  
BURLEIGH COUNTY, NORTH DAKOTA  
MY COMMISSION EXPIRES: 7-24-92



## APPROVAL OF BOARD OF COUNTY COMMISSIONERS

THE BOARD OF COUNTY COMMISSIONERS OF BURLEIGH COUNTY, NORTH DAKOTA HAS APPROVED THE SUBDIVISION OF LAND ON THE ANNEXED PLAT, HAS ACCEPTED THE DEDICATION OF ALL STREETS SHOWN THEREON AND HAS APPROVED THE GROUNDS AS SHOWN ON THE ANNEXED PLAT AS AN AMENDMENT TO THE MASTER PLAN OF BURLEIGH COUNTY.

THE FOREGOING ACTION OF THE BOARD OF COUNTY COMMISSIONERS OF BURLEIGH COUNTY, NORTH DAKOTA, WAS TAKEN BY RESOLUTION APPROVED THE 16<sup>th</sup> DAY OF DECEMBER, 1990.

Deanna Hill  
VICE-CHAIRMAN

Kevin Glatt  
COUNTY AUDITOR

## APPROVAL OF COUNTY PLANNING COMMISSION

THE SUBDIVISION OF LAND AS SHOWN ON THE ANNEXED PLAT HAS BEEN APPROVED BY THE PLANNING COMMISSION OF THE COUNTY OF BURLEIGH ON THE 15<sup>th</sup> DAY OF DECEMBER, 1990, IN ACCORDANCE WITH THE LAWS OF THE STATE OF NORTH DAKOTA, ORDINANCES OF BURLEIGH COUNTY, NORTH DAKOTA AND REGULATIONS ADOPTED BY SAID PLANNING COMMISSION.

Don Aho  
CHAIRMAN

Kevin Glatt  
COUNTY AUDITOR

## APPROVAL OF COUNTY ENGINEER

I, JON MILL, COUNTY ENGINEER FOR THE COUNTY OF BURLEIGH, STATE OF NORTH DAKOTA, HEREBY APPROVE "CORWIN SUBDIVISION" AS SHOWN ON THE ANNEXED PLAT.

Jon Mill  
COUNTY ENGINEER

## OWNER'S CERTIFICATE

KNOW ALL MEN BY THESE PRESENTS THAT ROBERT S. CORWIN AND VIRGINIA T. CORWIN, HCO 9 BOX 199A, BISMARCK, NORTH DAKOTA, BEING THE OWNERS AND PROPRIETORS OF THE PROPERTY SHOWN ON THE ANNEXED PLAT HAVE CAUSED THAT PORTION DESCRIBED HEREON AND SHOWN ON THE ANNEXED PLAT TO BE SURVEYED AND PLATTED AS "CORWIN SUBDIVISION" AND DO SO DEDICATE STREETS, INCLUDING SEWERS, CULVERTS, AND OTHER UTILITIES WHETHER SHOWN HEREON OR NOT TO THE PUBLIC USE FOREVER.  
THEY ALSO DEDICATE EASEMENTS TO RUN WITH THE LAND FOR WATER, SEWER, GAS, ELECTRIC OR OTHER PUBLIC UTILITIES OR SERVICES UNDER, ON OR OVER THOSE CERTAIN STRIPS OF LAND DESIGNATED HEREON AS UTILITY EASEMENTS.

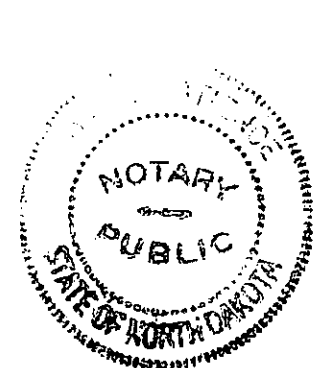
Robert S. Corwin  
ROBERT S. CORWIN

Virginia T. Corwin  
VIRGINIA T. CORWIN

STATE OF NORTH DAKOTA)

COUNTY OF BURLEIGH )

ON THIS 11<sup>th</sup> DAY OF DECEMBER, 1990, BEFORE ME PERSONALLY APPEARED ROBERT S. CORWIN AND VIRGINIA T. CORWIN, KNOWN TO ME TO BE THE PERSONS WHO EXECUTED THE FOREGOING INSTRUMENT AND ACKNOWLEDGED TO ME THAT THEY EXECUTED THE SAME.



DAVID PATIENCE - NOTARY PUBLIC  
BURLEIGH COUNTY, NORTH DAKOTA  
MY COMMISSION EXPIRES: 7-24-92



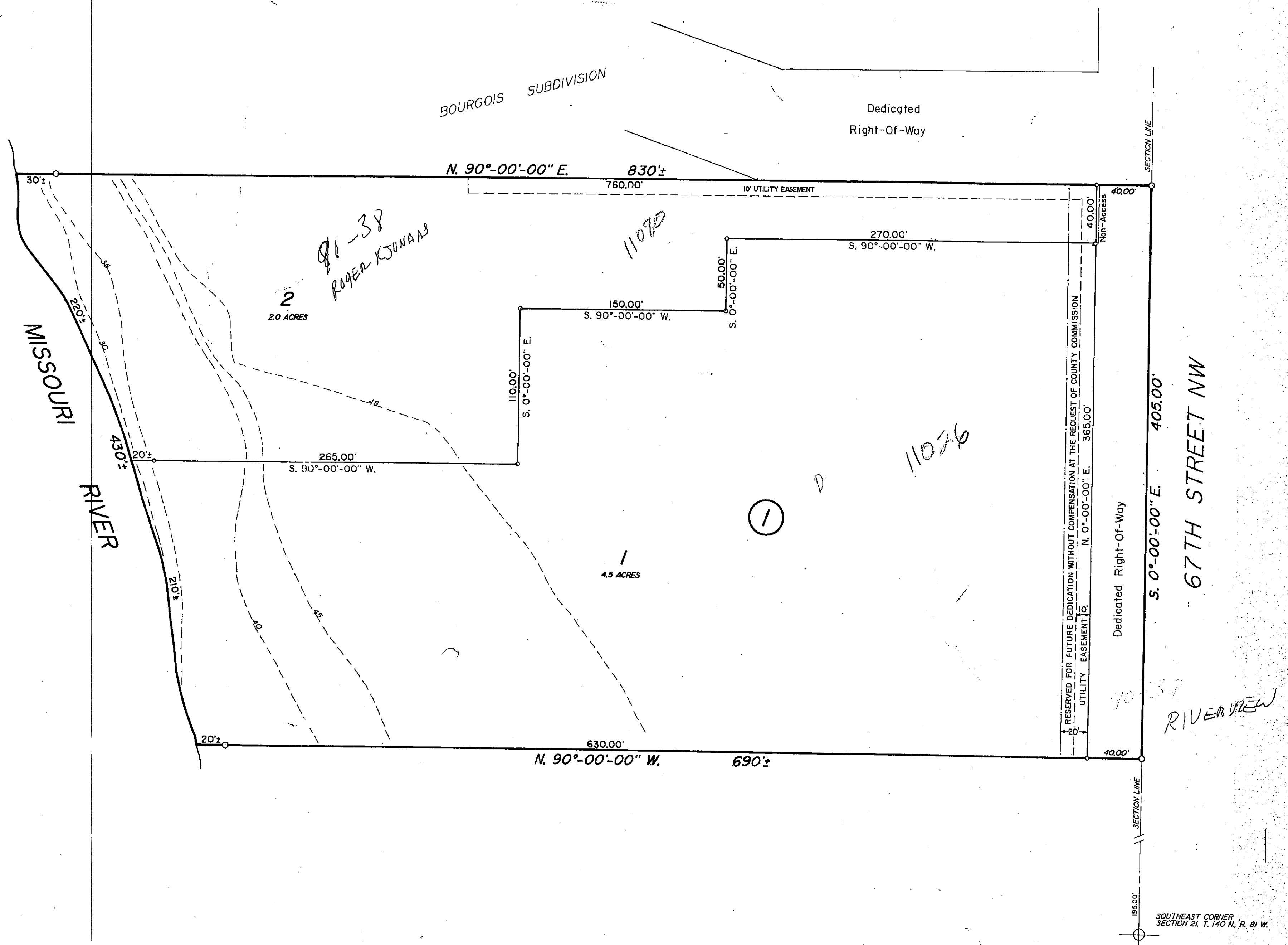
SCALE 1" = 50'

OCTOBER 3, 1990

100 YEAR FLOOD PLAIN ELEVATION 1640.7

FIRM SEPTEMBER 18, 1990

○ DENOTES IRON PIPE MONUMENT



Corwin Subdivision  
County  
Plat Number 1110