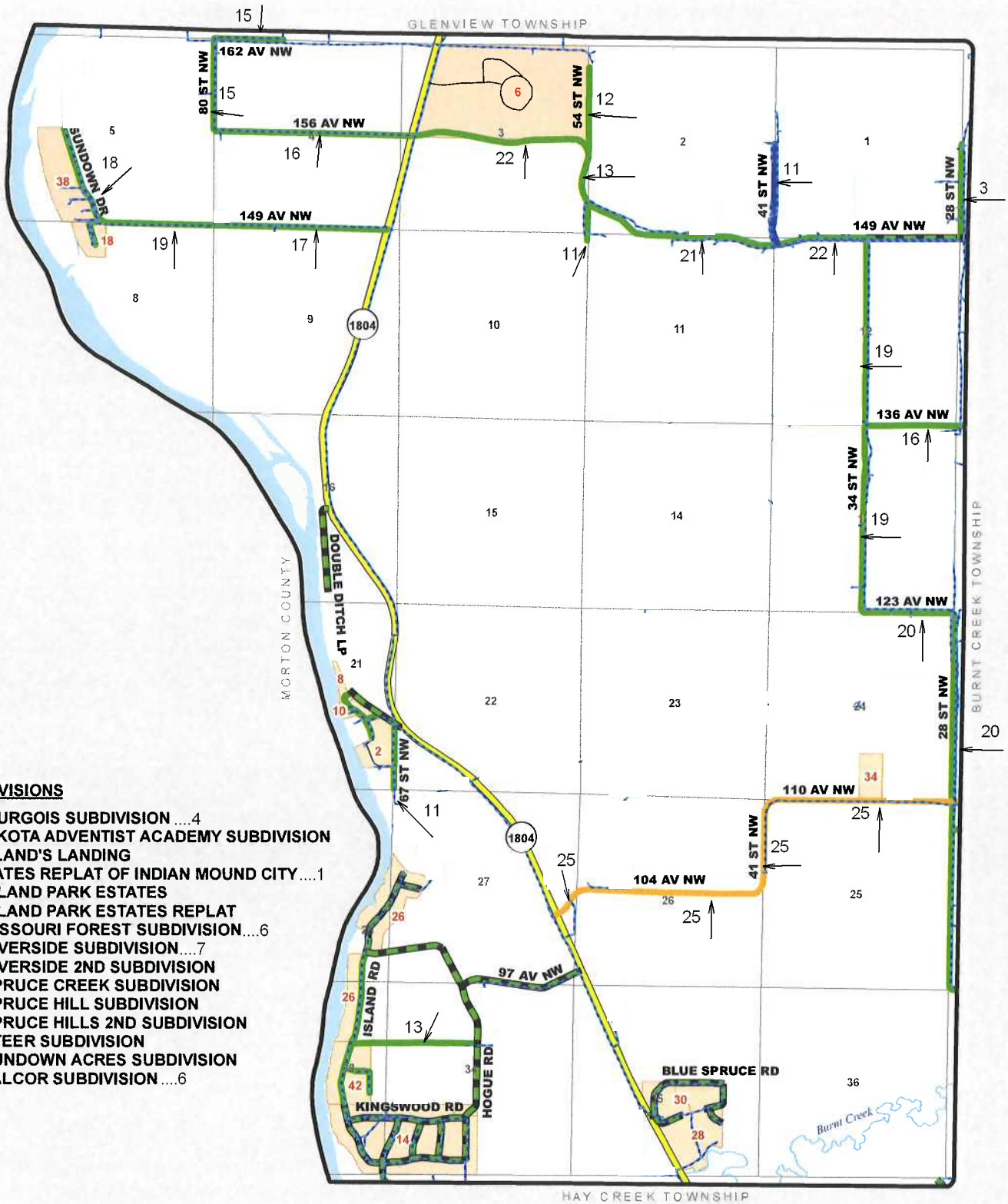




TOWNSHIP ROAD MAINTENANCE MAP

RIVERVIEW #23 (T140N R81W)

N
12/08/2014



SUBDIVISIONS

- 2 - BOURGOIS SUBDIVISION4
- 6 - DAKOTA ADVENTIST ACADEMY SUBDIVISION
- 8 - FELAND'S LANDING
- 10 - BATES REPLAT OF INDIAN MOUND CITY1
- 14 - ISLAND PARK ESTATES
- 14 - ISLAND PARK ESTATES REPLAT
- 18 - MISSOURI FOREST SUBDIVISION6
- 26 - RIVERSIDE SUBDIVISION7
- 26 - RIVERSIDE 2ND SUBDIVISION
- 28 - SPRUCE CREEK SUBDIVISION
- 30 - SPRUCE HILL SUBDIVISION
- 30 - SPRUCE HILLS 2ND SUBDIVISION
- 34 - STEER SUBDIVISION
- 38 - SUNDOWN ACRES SUBDIVISION
- 42 - VALCOR SUBDIVISION6

County Gravel Road	Gravel - Winter Maintenance	Paved - Winter Maintenance	State & Federal Highways	Bridge
County Paved Road	Gravel - Year Round Maintenance	Paved - Year Round Maintenance	Federal Aid Road	Water Pipe
Gravel - Summer Maintenance	Paved - Summer Maintenance	Township/County Jurisdiction	Other Roads	