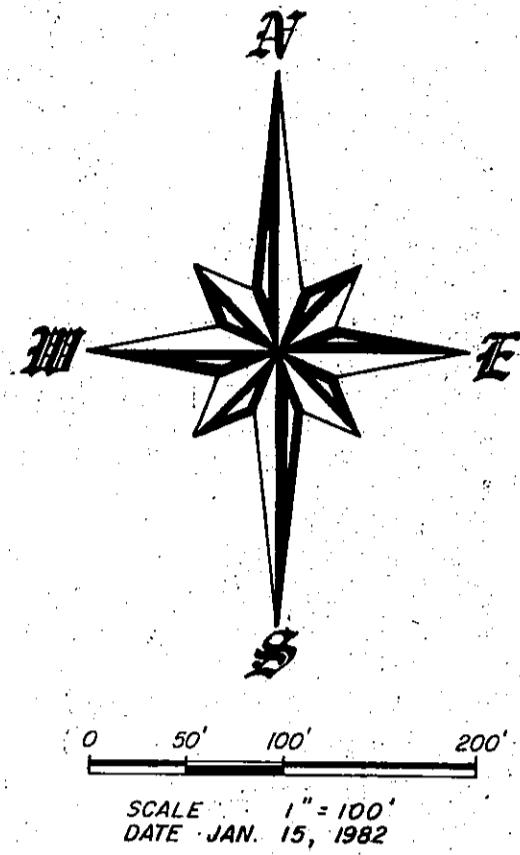


# MENOKEN MEADOWS SUBDIVISION

PART OF THE NE 1/4 OF SECTION 33, T139N, R78W  
BURLEIGH COUNTY, NORTH DAKOTA

**DOG COVENANT**  
All Dogs Are The Responsibility Of Their Owners And Shall Be Restrained From Unsupervised Wandering In The Public Right-of-Way Or Properties Not Under The Control Of Their Owners.

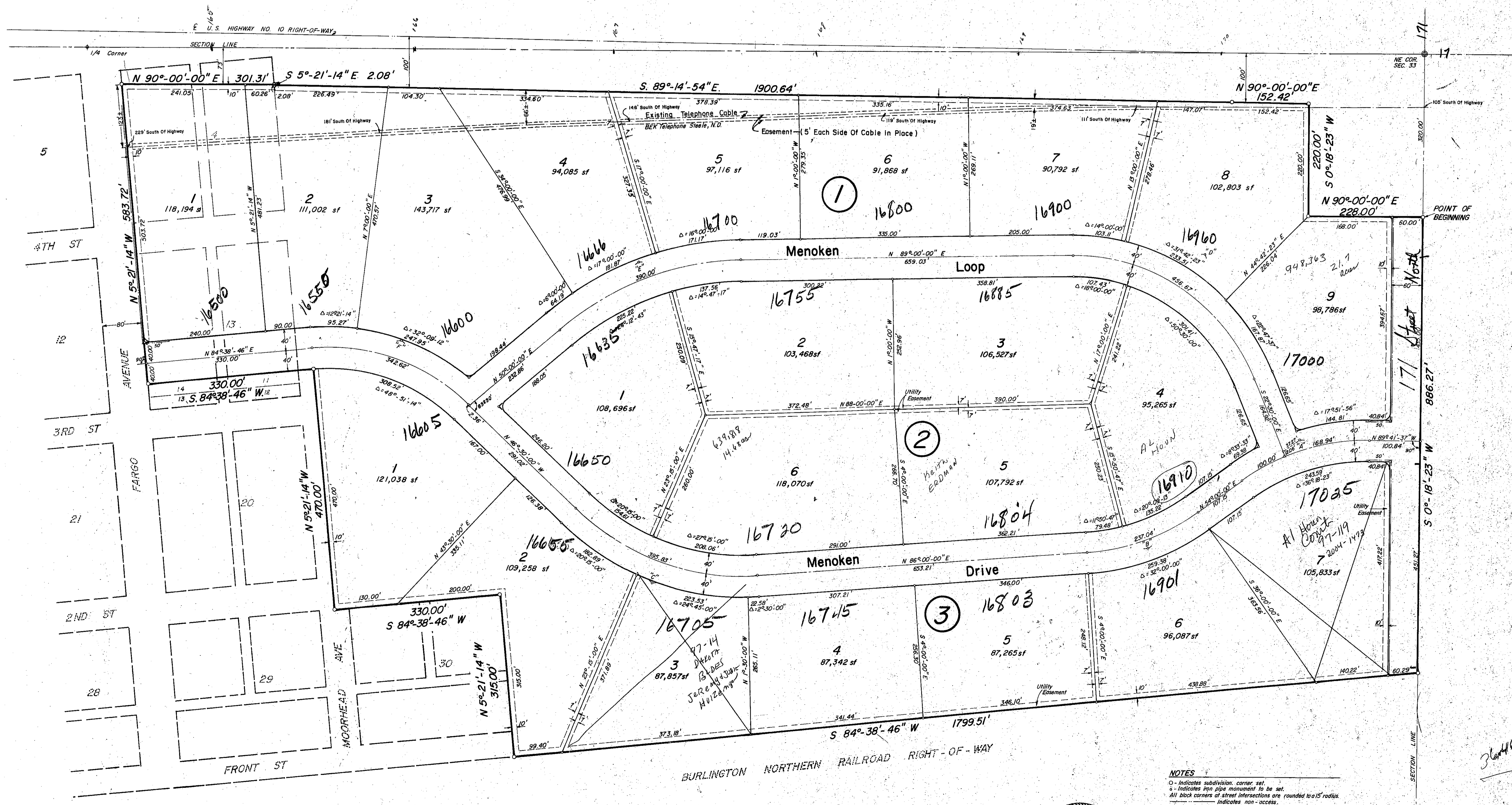


**CENTERLINE CURVE DATA**

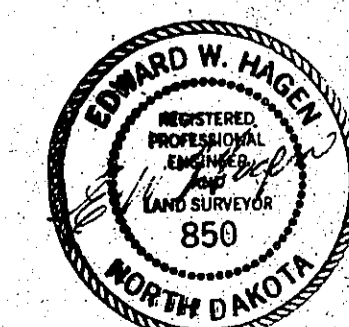
CURVE	Δ	D	T	L	R	E
A	36° 18' 23"	0° 30' 00"	139.16'	268.94'	424.41'	22.23'
B	32° 00' 00"	0° 30' 00"	121.70'	237.04'	424.41'	17.10'
C	47° 30' 00"	12° 00' 00"	210.09'	395.81'	477.46'	44.17'
D	68° 30' 00"	15° 00' 00"	260.08'	456.67'	381.97'	80.13'
E	39° 00' 00"	10° 00' 00"	202.90'	390.00'	572.95'	34.85'
F	48° 51' 14"	14° 15' 32"	182.51'	342.62'	401.83'	39.20'

AREA - 61.88 Ac.

BLOCKS 142  
204 ED FH  
90-6  
6-40



**NOTES**  
 Δ - Indicates subdivision corner set  
 S - Indicates iron pipe monument to be set  
 All block corners at street intersections are rounded to 15' radius  
 --- Indicates non-access



**Menoken Meadows Subdivision**  
County  
P. L. M. 4329

170E